

Document Title: Complete machine, descriptions	Function Group: 000	Information Type: Service Information	Date: 4/25/2026
Profile: R60E Volvo			

[Go back to Index Page](#)

Complete machine, descriptions

Showing Selected Profile

Valid for option/configuration			
Model	Option no.	Option	Configuration
R60E Volvo		Engine	EU Stage V / US Tier 4 final

Valid for serial numbers			
Model	Production site	Serial number start	Serial number stop
R60E Volvo	Motherwell	121011	129999

Volvo R60E is a two-axle rigid hauler with independent front suspension, a load capacity of 55 metric tonnes (60 short tons), and a load volume of 36.2 m³ (47.3 yds³). The machine has heavy-duty rear axles with full floating axle shafts, single reduction spiral bevel gear, differential and planetary reduction at each wheel.

Engine Cummins QSK19 - CM2350-K114

The machine is equipped with an in-line six cylinder engine with 19-litre displacement. 4 cycle, turbocharged and aftercooled with electromagnetic management. This Quantum series engine utilizes sophisticated electronics and premium engineering, to provide outstanding performance levels. Reliability and versatility is maintained for standby, prime and continuous power applications.

The engine meets emission regulatory requirements for Stage V / Tier 4 Final US.

The engine features an exhaust aftertreatment system that consists a selective catalytic reduction system, which reduces the content of nitrogen oxide (NO_x). AdBlue®/DEF is injected in the exhaust flow to reduce NO_x.

Temperature-controlled coolant flow maintains the AdBlue®/DEF at operating temperature.

The engine control module monitors the aftertreatment system to ensure reduction of NO_x emissions.

Electrical system

The machine has three main electronic control units (ECUs). Depending on options fitted the machine could have an additional four ECUs.

- **VCU (Vehicle Control Unit)**
Located in the cab, on the rear of the compartment under the instructor's seat.
Handles all operations of the machine and interfaces with the other control units.
- **ECM (Engine Control Module)**
Located on the engine's left side.
Handles the engine electronics and the interface with the machine.
- **TCU (Transmission Control Unit)**
Located in the cab, on the left wall of the compartment under the instructor's seat.
Handles the transmission electronics and the interface with the machine.
- **CCU (Camera Control Unit) - Option**
Located in the cab, under the instructor's seat.
Handles all operations of the 360° camera system.
- **LWU (Load Weight Unit) - Option**
Located on the instrument panel, next to the 360° camera system display screen.
Handles the load weigh system
- **TGW (Telematics Gateway) - Option**

Sample manual. Download All 1473 pages at:

<https://www.arepairmanual.com/downloads/r60e-volvo-rigid-haulers-service-manual/>

Product: R60E Volvo Rigid Haulers Service Manual

Full Download: <https://www.arepairmanual.com/downloads/r60e-volvo-rigid-haulers-service-manual/>

Located in the cab, under the instructor's seat.

Handles the load weigh system.

- **TPMU (Tyre Pressure Monitoring Unit) - Option**

Located on the left-hand side of the instrument panel, under the ventilation nozzle.

Handles the monitoring of the tyre pressures.

Power transmission

The **Allison H6620 ORS transmission** has automatic CEC5 electronic controls with a dynamic shift feature and is remote mounted in the frame.

Automatic converter lockup action in all speed ranges. Downshift inhibitor. Integral hydraulic retarder.

Six speeds forward, two reverse.

The **Drive axle** is a heavy duty axle with full floating axle shafts, single reduction spiral bevel gear differential and planetary reduction at each wheel.

Brakes

Service

The service brake is operated hydraulically. A transmission mounted pressure compensating pump provides hydraulic pressure for brakes and steering. Independent circuits front and rear. Each circuit incorporates a nitrogen accumulator which stores energy to provide consistent braking response.

Parking

A push button solenoid control applies the service and parking brakes. The parking brake is hydraulically operated with a spring-applied disc brake on the rear axle brake packs.

The parking brake also applies should system pressure fall below a predetermined level.

On machine start-up, the parking brake remains engaged; irrespective of the brake switching position. Machine control logic does not permit the brakes to be released until the operator has indicated that they are in control of the machine. The operator must press down on the service foot brake pedal. When the service foot brake is pressed down, the vehicle control unit (VCU) permits the safe release of the parking brake

Brake performance requirements comply with ISO 3450:2011.

Retardation

Electronic control of rear disc brakes or hydraulic retarder in transmission; depending on manual selection.

The retardation force of the rear disc brake can be manually adjusted to six stages of variable pressure for consistent downhill machine control.

Steering system

The machine has an independent hydrostatic steering system with closed-centre steering valve, accumulator and variable displacement pump. An accumulator provides uniform steering regardless of engine speed. In the event of loss of engine power it provides emergency steering. A low pressure indicator light warns of system pressure below 82 bar (1200 PSI).

Steering performance complies with ISO 5010:2019.

Suspension

Front: King pin strut type independent front wheel suspension with self-contained, variable rate, nitrogen/oil cylinders.

Rear: Variable rate nitrogen/oil cylinders with A-frame linkage and lateral stabilizer bar.

Body

Longitudinal 'V' type floor with integral transverse box-section stiffeners. The body is exhaust heated and rests on resilient impact absorption pads. Body wear surfaces are high hardness (360-440 BHN) abrasion resistant steel. Yield strength of plates 1000 MPa (145000 lbf/in²).

Cab

The cab features a manually controlled heating and ventilation system with demist system for the windows. Air conditioning is standard. The cab has two doors; a main door to the driver's left side. Depending on where the emergency/obstruction is, either door can be used as an alternative exit.

FOPS and ROPS

The cab is approved as a protective cab according to FOPS and ROPS standards. FOPS (ISO 3449:2008 Level II Qualified) is an abbreviation of Falling Objects Protective Structure (roof protection) and ROPS (ISO 3471:2008 Qualified) is an abbreviation of Roll Over Protective Structure (roll over protection).

If any part of the cab's protective design features is affected by plastic deformation or cracks, the cab must be replaced immediately.

Never make any unauthorized changes to the cab, e.g., lowering the roof height, drilling, welding on of brackets for fire extinguishers, radio aerial, or other equipment without first discussing the modifications, via a dealer, with personnel at Volvo CE's design and engineering department. They will decide if the modification can lead to the approval becoming

[Sample manual Download All 1473 pages at https://www.arepairmanual.com/downloads/r60e-volvo-rigid-haulers-service-manual/](https://www.arepairmanual.com/downloads/r60e-volvo-rigid-haulers-service-manual/)

invalid.

Hydraulics

The hydraulic system has two hydraulic pumps, one piston pump type and one gear driven pump.

The single pump (piston type) supports the steering, brake and body pilot systems. The double pump supports the Oil Cooled Disc Brake (OCDB) system and body hoist system. The double pump operates the OCDB system until the body hoist system is activated. During body operations, one section of the double pump operates the body hoist system. The other section of the double pump is used solely to constantly feed the OCDB system.

The hydraulic system has three accumulators of the piston type, that are pre-charged with nitrogen gas. There is one accumulator for the steering circuit which maintains pressure for instant reaction and provides pressure for emergency steering in a pressure loss situation. There is one accumulator for the front brake system and one accumulator for the rear brake system which maintain pressure in the systems. The rear brake accumulator also maintains constant pressure in the parking brake system, this holds the parking brake in the OFF position when the machine is in operation.

Tipping system

The machine has a body control lever that sends an electric signal via the VCU to an electro-hydraulic hoist valve. The hoist valve controls the hydraulic input to the two hoist cylinders which control the body's movement. The machine has a proximity sensor, to control the body movement during the lowering procedure.

Document Title: Complete machine, descriptions	Function Group: 000	Information Type: Service Information	Date: 4/25/2026
Profile: R60E Volvo			

[Go back to Index Page](#)

Complete machine, descriptions

Showing Selected Profile

Valid for option/configuration			
Model	Option no.	Option	Configuration
R60E Volvo		Engine	Tier II

Valid for serial numbers			
Model	Production site	Serial number start	Serial number stop
R60E Volvo	Motherwell	111014	119999

Volvo R60E is a two-axle rigid hauler with independent front suspension, a load capacity of 55 metric tonnes (60 short tons), and a load volume of 36.2 m³ (47.3 yds³). The machine has heavy-duty rear axles with full floating axle shafts, single reduction spiral bevel gear, differential and planetary reduction at each wheel.

Engine Cummins QSK19 - CM2150

The machine is equipped with an in-line six cylinder engine with 19-litre displacement. 4 cycle, turbocharged and aftercooled with electromagnetic management. This Quantum series engine utilizes sophisticated electronics and premium engineering, to provide outstanding performance levels. Reliability and versatility is maintained for standby, prime and continuous power applications.

The engine meets emission requirements for Stage II.

Electrical system

The machine has three main electronic control units (ECUs). Depending on options fitted the machine could have an additional four ECUs.

- **VCU (Vehicle Control Unit)**
Located in the cab, on the rear of the compartment under the instructor's seat.
Handles all operations of the machine and interfaces with the other control units.
- **ECM (Engine Control Module)**
Located on the engine's left side.
Handles the engine electronics and the interface with the machine.
- **TCU (Transmission Control Unit)**
Located in the cab, on the left wall of the compartment under the instructor's seat.
Handles the transmission electronics and the interface with the machine.
- **CCU (Camera Control Unit) - Option**
Located in the cab, under the instructor's seat.
Handles all operations of the 360° camera system.
- **LWU (Load Weight Unit) - Option**
Located on the instrument panel, next to the 360° camera system display screen.
Handles the load weigh system
- **TGW (Telematics Gateway) - Option**
Located in the cab, under the instructor's seat.
Handles the load weigh system.
- **TPMU (Tyre Pressure Monitoring Unit) - Option**
Located on the left-hand side of the instrument panel, under the ventilation nozzle.
Handles the monitoring of the tyre pressures.

Power transmission

The **Allison H6620 ORS transmission** has automatic CEC5 electronic controls with a dynamic shift feature and is remote mounted in the frame.

Automatic converter lockup action in all speed ranges. Downshift inhibitor. Integral hydraulic retarder.

Six speeds forward, two reverse.

The **drive axle** is a heavy duty axle with full floating axle shafts, single reduction spiral bevel gear differential and planetary reduction at each wheel.

Brakes

Service

The service brake is operated hydraulically. A transmission mounted pressure compensating pump provides hydraulic pressure for brakes and steering. Independent circuits front and rear. Each circuit incorporates a nitrogen accumulator which stores energy to provide consistent braking response.

Parking

A push button solenoid control applies the service and parking brakes. The parking brake is hydraulically operated with a spring-applied disc brake on the rear axle brake packs.

The parking brake also applies should system pressure fall below a predetermined level.

On machine start-up, the parking brake remains engaged; irrespective of the brake switching position. Machine control logic does not permit the brakes to be released until the operator has indicated that they are in control of the machine. The operator must press down on the service foot brake pedal. When the service foot brake is pressed down, the vehicle control unit (VCU) permits the safe release of the parking brake.

Brake performance requirements comply with ISO 3450:2011.

Retardation

Electronic control of rear disc brakes or hydraulic retarder in transmission; depending on manual selection.

The retardation force of the rear disc brake can be manually adjusted to six stages of variable pressure for consistent downhill machine control.

Steering system

The machine has an independent hydrostatic steering system with closed-centre steering valve, accumulator and variable displacement pump. An accumulator provides uniform steering regardless of engine speed. In the event of loss of engine power it provides emergency steering. A low pressure indicator light warns of system pressure below 82 bar (1200 PSI).

Steering performance complies with ISO 5010:2019.

Suspension

Front: King pin strut type independent front wheel suspension with self-contained, variable rate, nitrogen/oil cylinders.

Rear: Variable rate nitrogen/oil cylinders with A-frame linkage and lateral stabilizer bar.

Body

Longitudinal 'V' type floor with integral transverse box-section stiffeners. The body is exhaust heated and rests on resilient impact absorption pads. Body wear surfaces are high hardness (360-440 BHN) abrasion resistant steel. Yield strength of plates 1000 MPa (145000 lbf/in²).

Cab

The cab features a manually controlled heating and ventilation system with demist system for the windows. Air conditioning is standard. The cab has two doors; a main door to the driver's left side. Depending on where the emergency/obstruction is, either door can be used as an alternative exit.

FOPS and ROPS

The cab is approved as a protective cab according to FOPS and ROPS standards. FOPS (ISO 3449:2008 Level II Qualified) is an abbreviation of Falling Objects Protective Structure (roof protection) and ROPS (ISO 3471:2008 Qualified) is an abbreviation of Roll Over Protective Structure (roll over protection).

If any part of the cab's protective design features is affected by plastic deformation or cracks, the cab must be replaced immediately.

Never make any unauthorized changes to the cab, e.g., lowering the roof height, drilling, welding on of brackets for fire extinguishers, radio aerial, or other equipment without first discussing the modifications, via a dealer, with personnel at Volvo CE's design and engineering department. They will decide if the modification can lead to the approval becoming invalid.

Hydraulics

The hydraulic system has two hydraulic pumps, one piston pump type and one gear driven pump.

The single pump (piston type) supports the steering, brake and body pilot systems. The double pump supports the Oil Cooled Disc Brake (OCDB) system and body hoist system. The double pump operates the OCDB system until the body hoist

system is activated. During body operations, one section of the double pump operates the body hoist system. The other section of the double pump is used solely to constantly feed the OCDB system.

The hydraulic system has three accumulators of the piston type, that are pre-charged with nitrogen gas. There is one accumulator for the steering circuit which maintains pressure for instant reaction and provides pressure for emergency steering in a pressure loss situation. There is one accumulator for the front brake system and one accumulator for the rear brake system which maintain pressure in the systems. The rear brake accumulator also maintains constant pressure in the parking brake system, this holds the parking brake in the OFF position when the machine is in operation.

Tipping system

The machine has a body control lever that sends an electric signal via the VCU to an electro-hydraulic hoist valve. The hoist valve controls the hydraulic input to the two hoist cylinders which control the body's movement. The machine has a proximity sensor, to control the body movement during the lowering procedure.

Document Title: Information and warning decals	Function Group: 000	Information Type: Service Information	Date: 4/25/2026
Profile: R60E Volvo			

[Go back to Index Page](#)

Information and warning decals

Showing Selected Profile

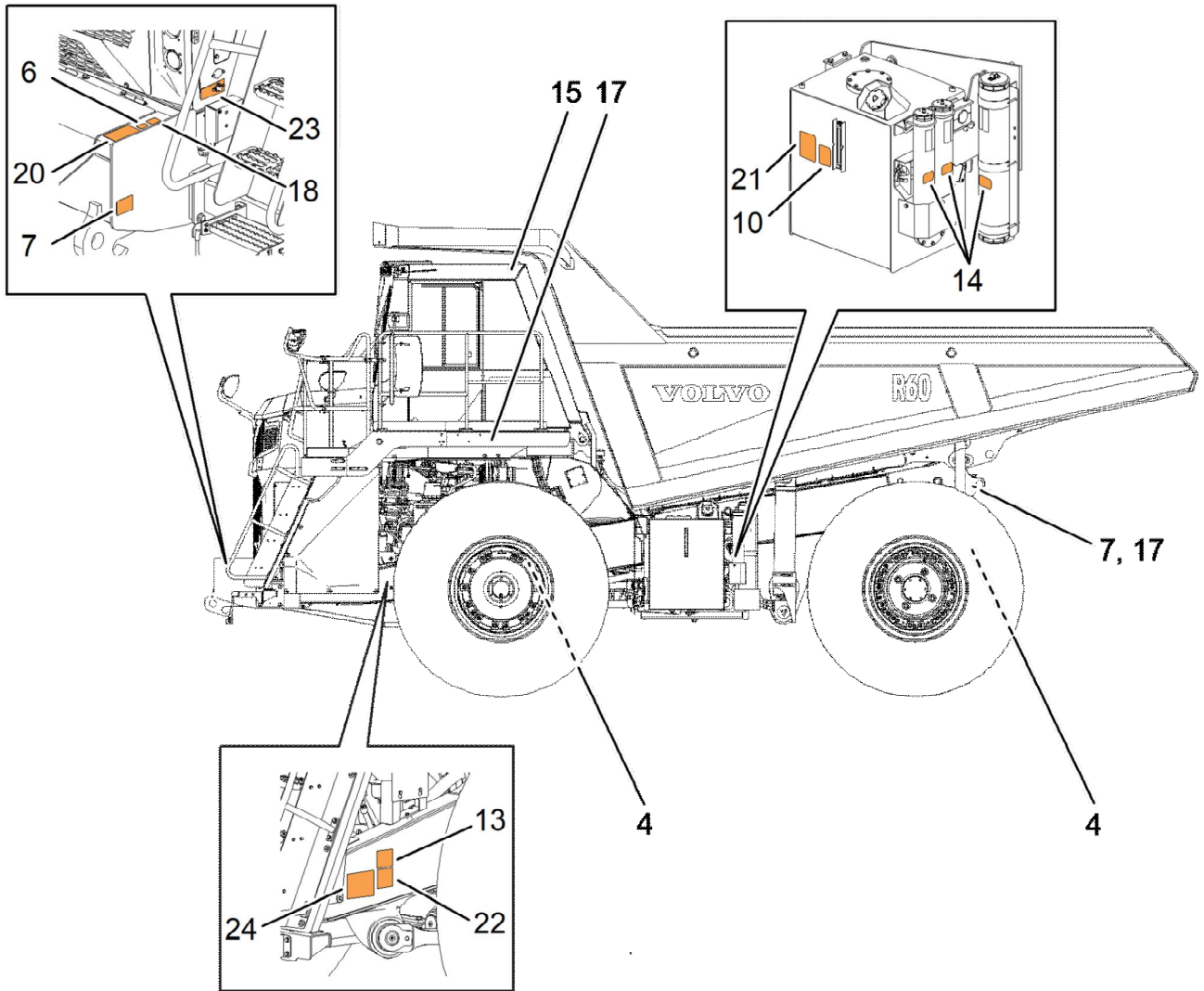
Valid for option/configuration			
Model	Option no.	Option	Configuration
R60E Volvo		Engine	EU Stage V / US Tier 4 final

Valid for serial numbers			
Model	Production site	Serial number start	Serial number stop
R60E Volvo	Motherwell	121011	129999

The operator should know, follow, and pay attention to warnings and information stated on decals and plates. Not all plates/decals are installed on all machines since they are dependent on market and machine.

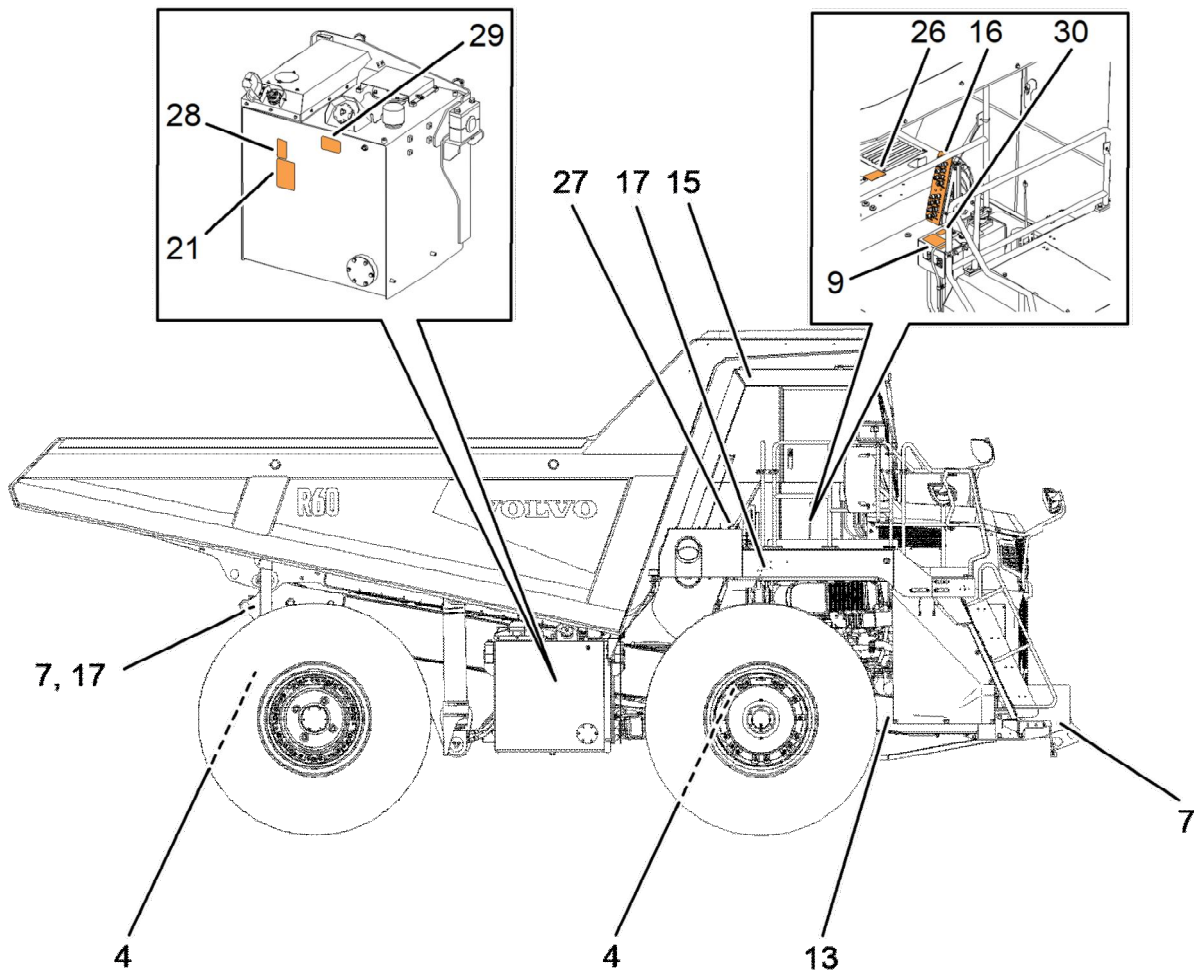
The decals must be kept free from dirt, so that they are legible and easy to understand. Decals/plates that have been lost, damaged, painted over, or no longer are legible for other reasons, must be replaced immediately. Appropriate safety decals must be fitted to all spare parts.

The part number (order number) of each plate/decal can be found in the Parts Catalogue.



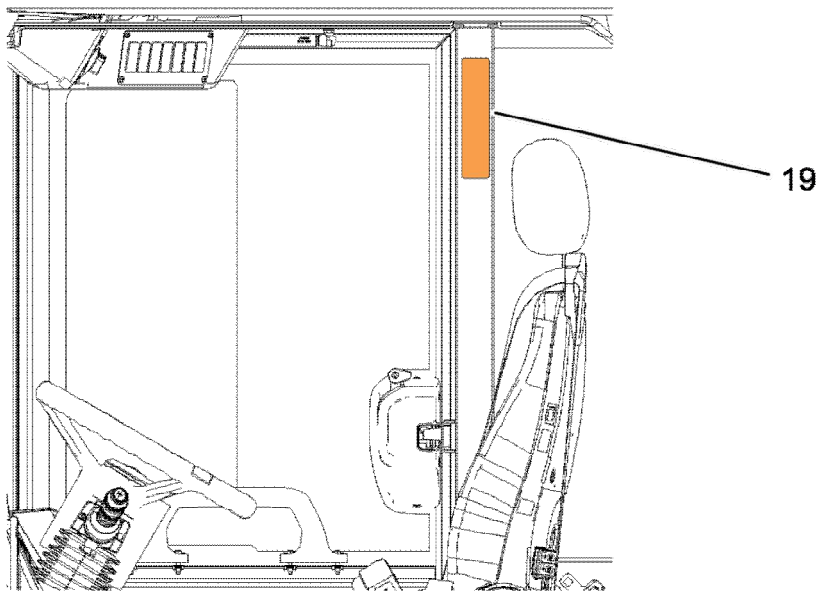
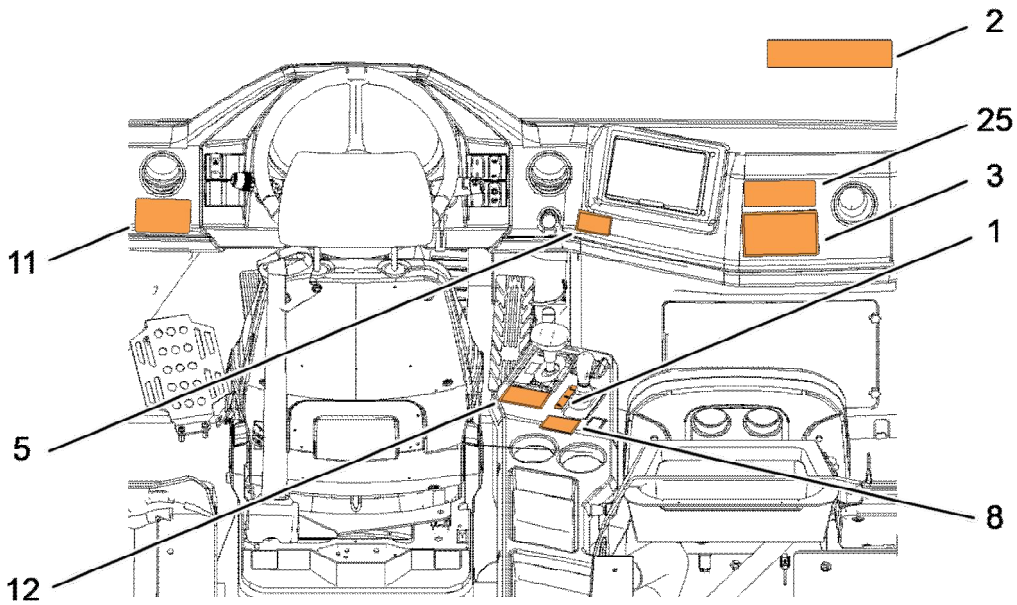
V1250004

Figure 1



V1250005

Figure 2

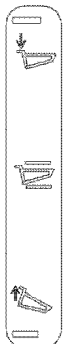


V1246235

Figure 3

1. Body hoist

Spare part number: 15425054



V1188066

2. WARNING! Gradient

Spare part number: 15335776



%	°	DPP11		DPP11		DPP11		DPP11	
		0	6	37	0	6	37	0	6
0	0	66	37	0	6	80	37		
5	3	28	15	3	6	58	28		
10	3	16	10	10	5	35	21		
15	7.5	10	6	13	4	25	15		
20	11	8	5	20	3	18	11		
25	14	5	3	23	3	12	9		
30	17	2	1	26	2	12	7		

V1189646

Figure 5

Figure 4

3. WARNING! Seat belt

Spare part number: 15370753

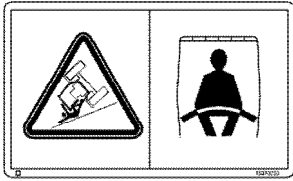


Figure 6

5. Parking brake

Spare part number: 15465532

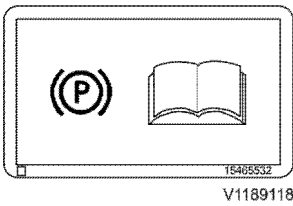


Figure 8

7. Hook and tie point

Spare part number: 15381194

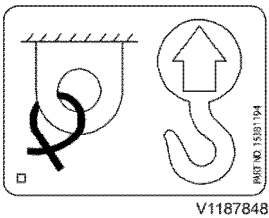


Figure 10

9. CAUTION! Radiator

Spare part number: 15334767



Figure 12

4. WARNING! Suspension struts

Spare part number: 15336277

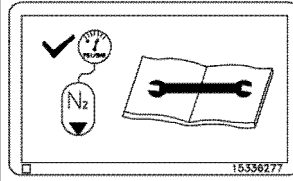


Figure 7

6. Battery shut off

Spare part number: 15377808

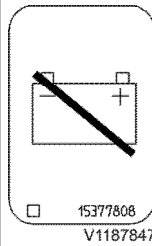


Figure 9

8. WARNING! Park brake

Spare part number: 15335788

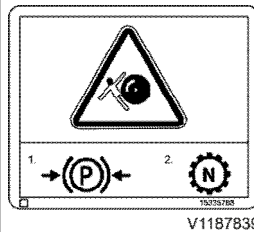
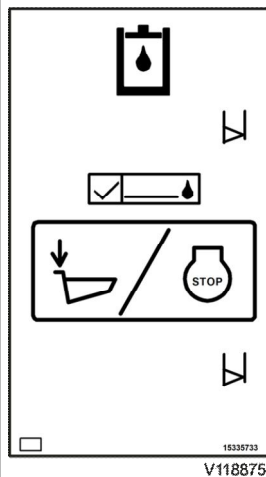


Figure 11

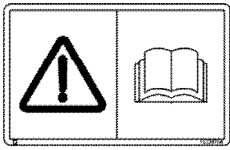
10. Hydraulic oil level

Spare part number: 15335733



11. WARNING! Handbook

Spare part number: 15334764



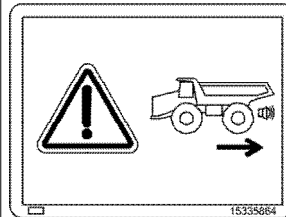
V1187833

Figure 14

Figure 13

12. WARNING! Reverse alarm

Spare part number: 15335864

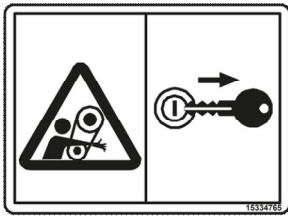


15335864
V1187842

Figure 15

13. WARNING! Engine stop - entanglement hazard

Spare part number: 15334765

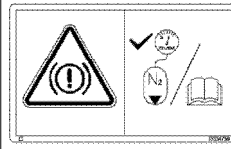


15334765
V1188757

Figure 16

14. WARNING! Accumulators

Spare part number: 15334759



V1187832

Figure 17

15. CAUTION! Cab foam

Spare part number: 15335789

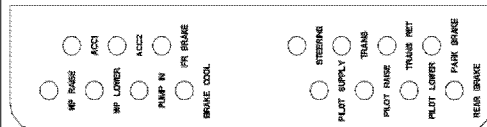


15335789
V1187840

Figure 18

16. Diagnostics

Spare part number: 15435709

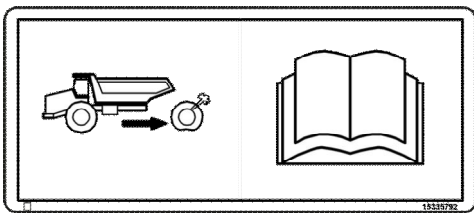


V1188754

Figure 19

17. Rim clamps

Spare part number: 15335792

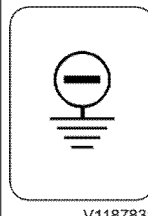


15335792
V1188759

Figure 20

18. Battery earth

Spare part number: 9361787



V1187831

Figure 21

19. Cab ROPS/FOPS

Spare part number: 15433609

20. Welding

Spare part number: 15334774

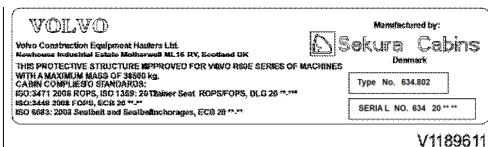


Figure 22

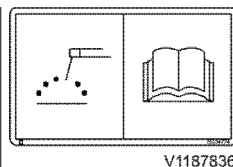


Figure 23

21. WARNING! Crush hazard — Body supports

Spare part number: 15335749



Figure 24

22. Product plate

Spare part number: 15454472

Volvo Construction Equipment

Volvo Construction Equipment Haulers Ltd
Newhouse Industrial Estate, Motherwell
Scotland, ML1 5RY

Type/Model

Product Name

Product Identification Number

Machine mass kg

Nominal power kW

Manufacturing year

Made in Assembled in

VOLVO

15454472

V1187783

Figure 25

23. Access lights

Spare part number: 15453212

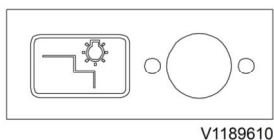


Figure 26

24. Safe lift instructions

Spare part number: 15488993

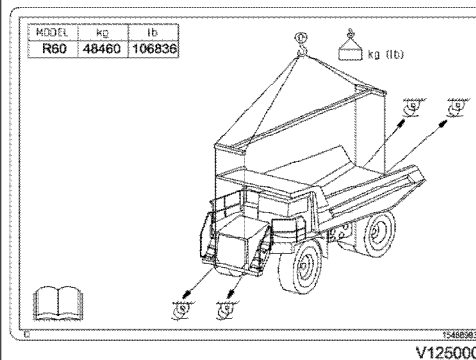


Figure 27

25. Height

Spare part number: 15431031

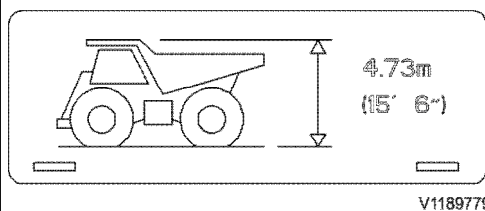


Figure 28

26. WARNING! Hot surface

Spare part number: 15392371

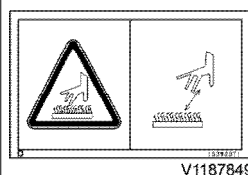


Figure 29

27. No step

28. Diesel exhaust fluid

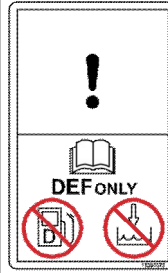
Spare part number: 15392160



V1188521

Figure 30
V1188521

Spare part number: 15380575

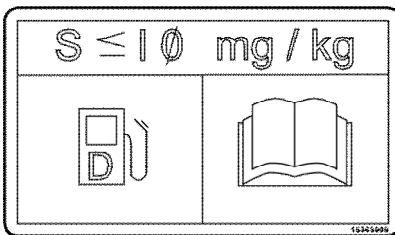


V1188471

Figure 31

29. Fuel

Spare part number: 15363909

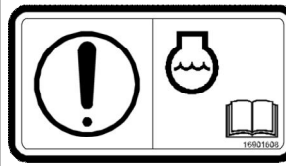


V1188470

Figure 32

30. Engine coolant

Spare part number: 16901608



V1186007

Figure 33

Document Title: Information and warning decals	Function Group: 000	Information Type: Service Information	Date: 4/25/2026
Profile: R60E Volvo			

[Go back to Index Page](#)

Information and warning decals

Showing Selected Profile

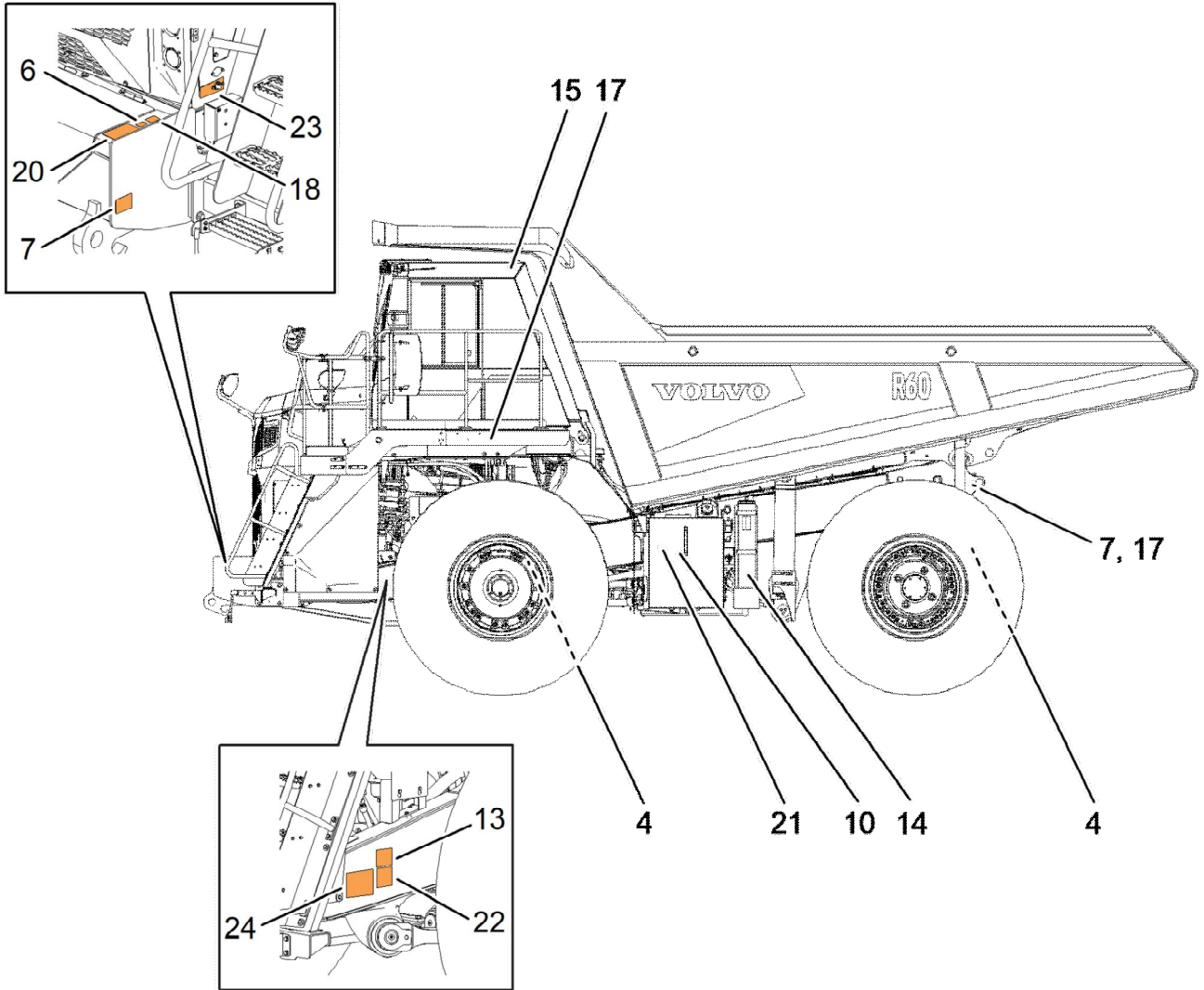
Valid for option/configuration			
Model	Option no.	Option	Configuration
R60E Volvo		Engine	Tier II

Valid for serial numbers			
Model	Production site	Serial number start	Serial number stop
R60E Volvo	Motherwell	111014	119999

The operator should know, follow, and pay attention to warnings and information stated on decals and plates. Not all plates/decals are installed on all machines since they are dependent on market and machine.

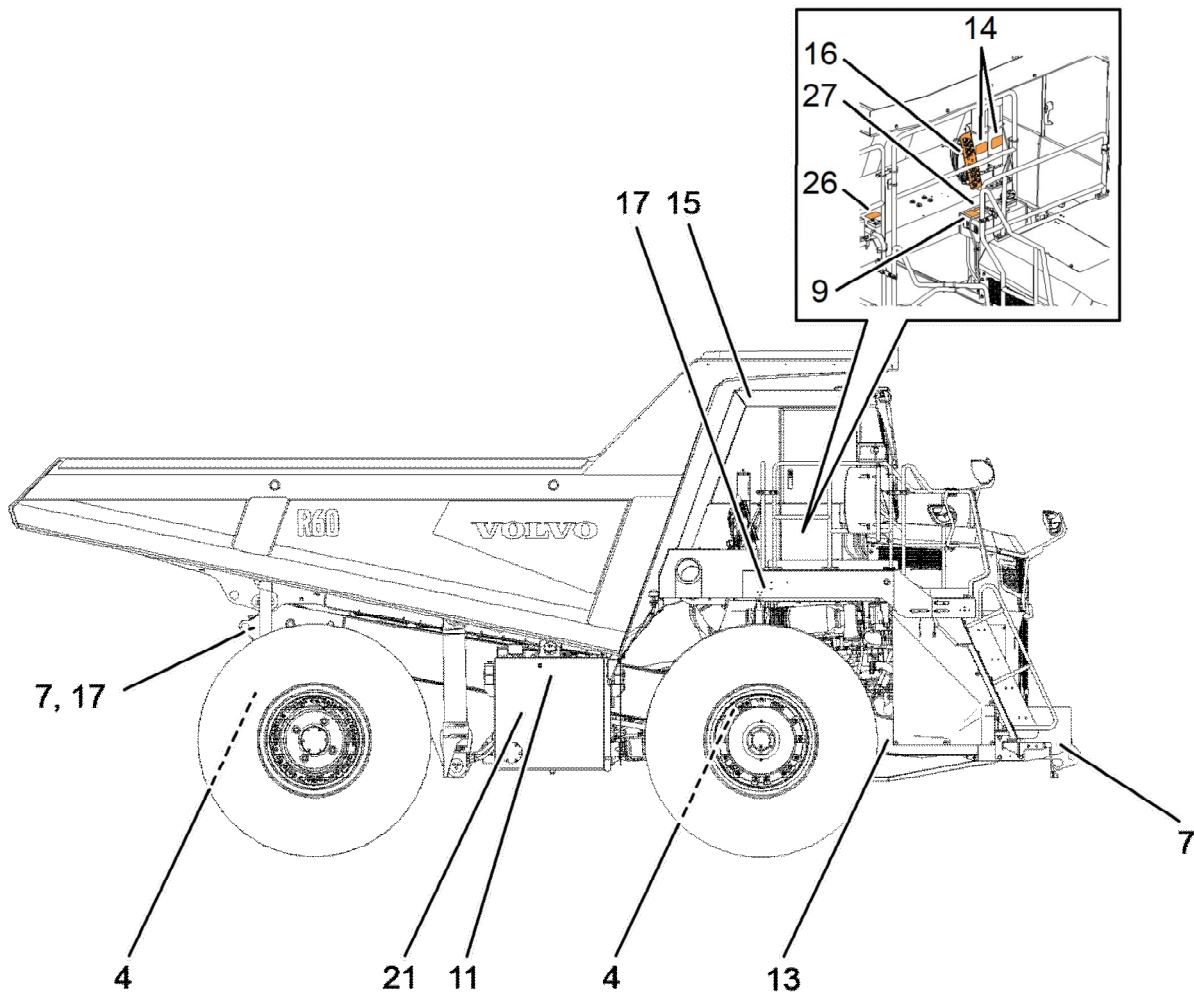
The decals must be kept free from dirt, so that they are legible and easy to understand. Decals/plates that have been lost, damaged, painted over, or no longer are legible for other reasons, must be replaced immediately. Appropriate safety decals must be fitted to all spare parts.

The part number (order number) of each plate/decals can be found in the Parts Catalogue.



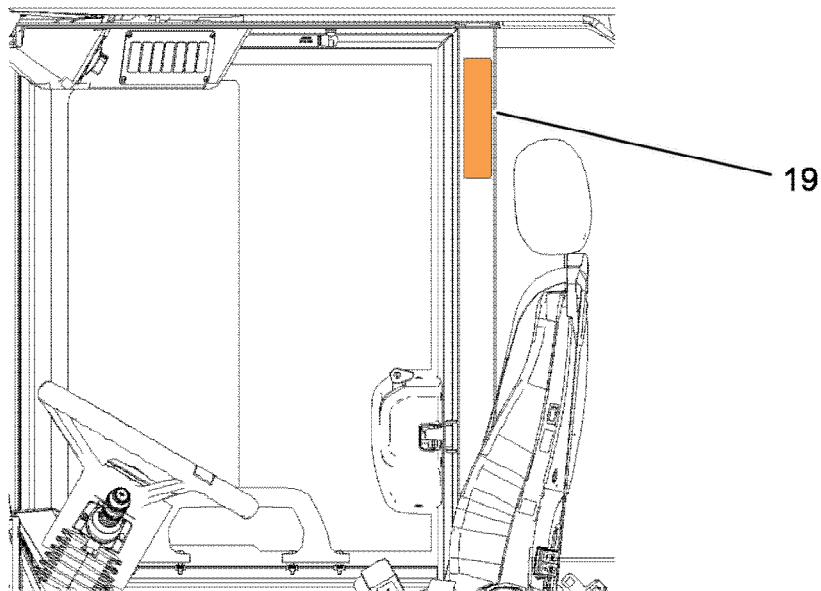
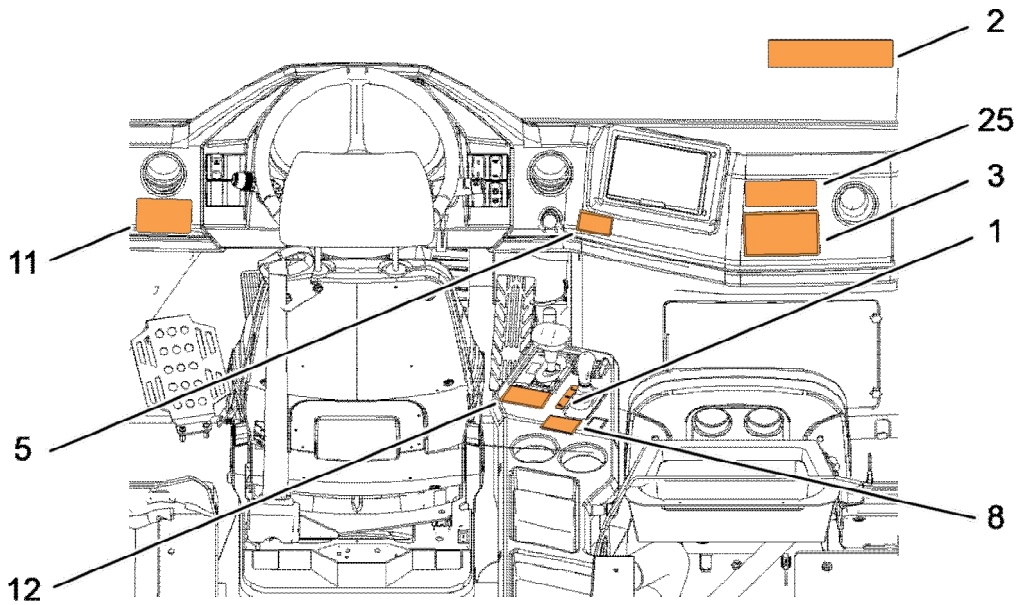
V1246233

Figure 1



V1246234

Figure 2

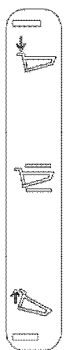


V1246235

Figure 3

1. Body hoist

Spare part number: 15425054





V1188066

2. WARNING! Gradient

Spare part number: 15335776



%							
	⊙	⊙	⊙	⊙	⊙	⊙	
0	6	60	37	0	6	60	37
5	9	28	18	3	9	28	18
10	3	16	10	10	6	36	21
15	11	10	6	15	4	24	15
20	11	8	5	20	3	18	11
25	10	6	3	25	3	15	9
30	10	2	1	30	2	12	7

V1189646

Figure 5

Figure 4

3. WARNING! Seat belt

Spare part number: 15370753

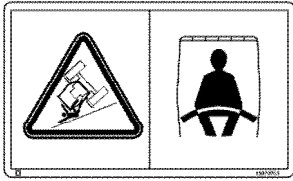


Figure 6

5. Parking brake

Spare part number: 15465532

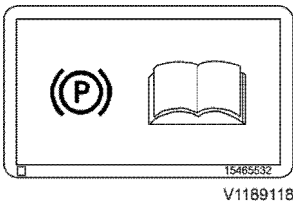


Figure 8

7. Hook and tie point

Spare part number: 15381194

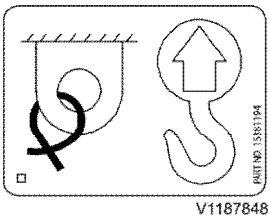


Figure 10

9. CAUTION! Radiator

Spare part number: 15334767



Figure 12

4. WARNING! Suspension struts

Spare part number: 15336277

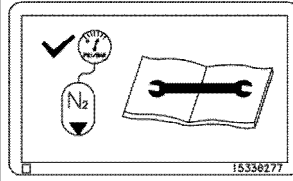


Figure 7

6. Battery shut off

Spare part number: 15377808

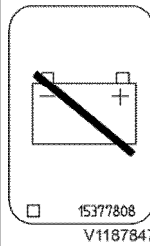


Figure 9

8. WARNING! Park brake

Spare part number: 15335788

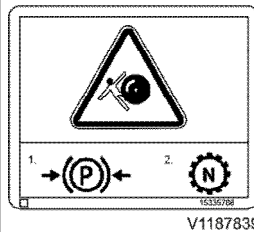
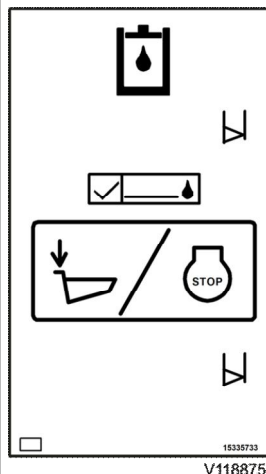


Figure 11

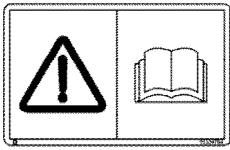
10. Hydraulic oil level

Spare part number: 15335733



11. WARNING! Handbook

Spare part number: 15334764



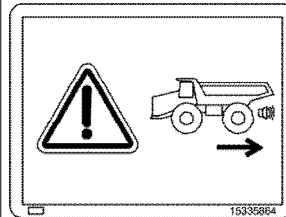
V1187833

Figure 14

Figure 13

12. WARNING! Reverse alarm

Spare part number: 15335864

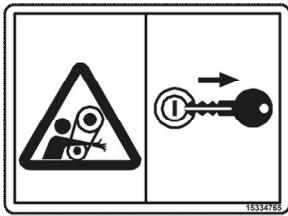


15335864
V1187842

Figure 15

13. WARNING! Engine stop - entanglement hazard

Spare part number: 15334765

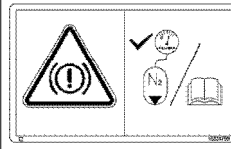


15334765
V1188757

Figure 16

14. WARNING! Accumulators

Spare part number: 15334759



V1187832

Figure 17

15. CAUTION! Cab foam

Spare part number: 15335789

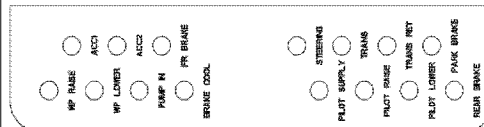


15335789
V1187840

Figure 18

16. Diagnostics

Spare part number: 15435709

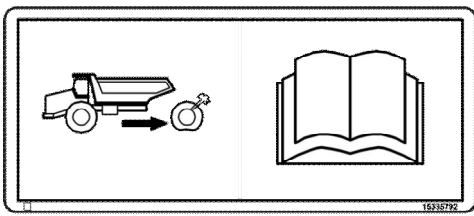


V1188754

Figure 19

17. Rim clamps

Spare part number: 15335792

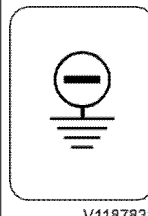


15335792
V1188759

Figure 20

18. Battery earth

Spare part number: 9361787



V1187831

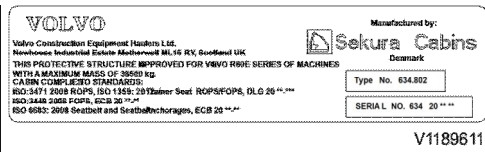
Figure 21

19. Cab ROPS/FOPS

Spare part number: 15433609

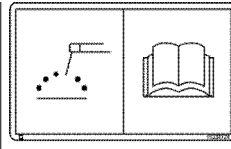
20. Welding

Spare part number: 15334774



V1189611

Figure 22



V1187836

Figure 23

21. WARNING! Crush hazard — Body supports

Spare part number: 15335749



V1187837

Figure 24

22. Product plate

Spare part number: 15454472

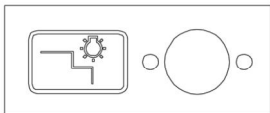
Volvo Construction Equipment	
Volvo Construction Equipment Haulers Ltd Newhouse Industrial Estate, Motherwell Scotland, ML1 5RY	
Type/Model	<input type="text"/>
Product Name	<input type="text"/>
Product Identification Number	<input type="text"/>
Machine mass kg	<input type="text"/>
Nominal power kW	<input type="text"/>
Manufacturing year	<input type="text"/>
Made in <input type="text"/>	Assembled in <input type="text"/>
VOLVO	

V1187783

Figure 25

23. Access lights

Spare part number: 15453212

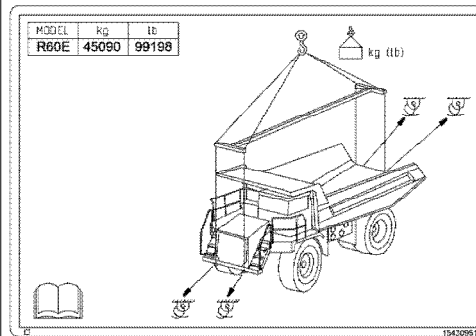


V1189610

Figure 26

24. Safe lift instructions

Spare part number: 15430951

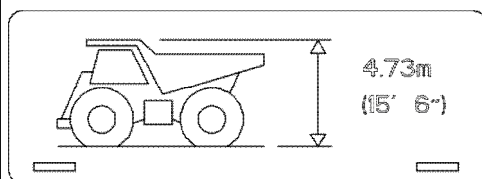


V1189777

Figure 27

25. Height

Spare part number: 15431031

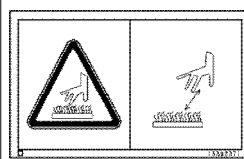


V1189779

Figure 28

26. WARNING! Hot surface

Spare part number: 15392371



V1187849

Figure 29

27. Engine coolant

Spare part number: 16901608

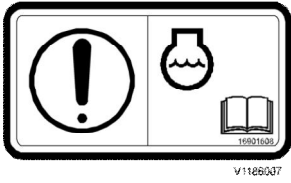


Figure 30

Document Title: Information and warning decals	Function Group: 000	Information Type: Service Information	Date: 4/25/2026
Profile: R60E Volvo			

[Go back to Index Page](#)

Information and warning decals

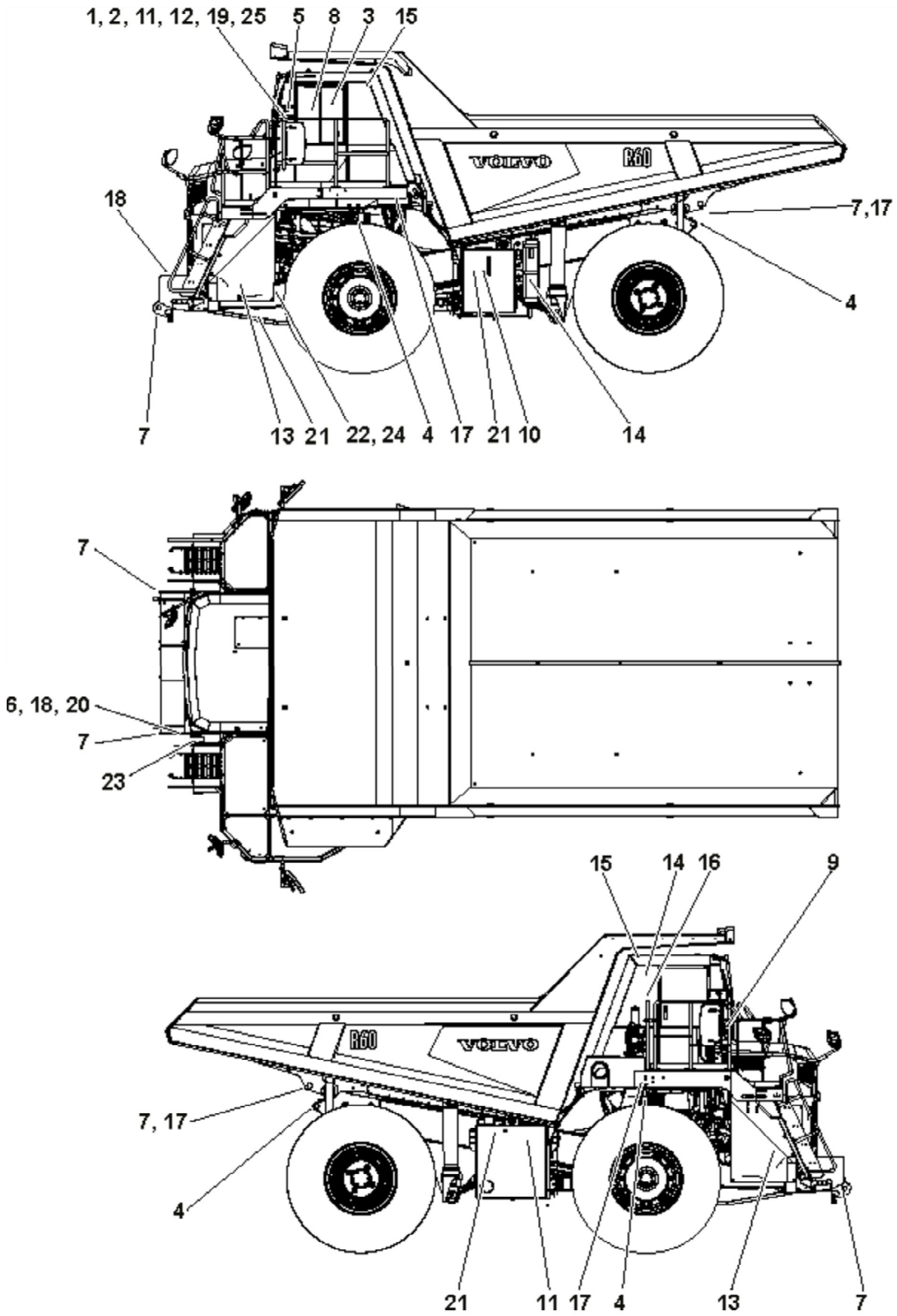
Showing Selected Profile

Valid for serial numbers			
Model	Production site	Serial number start	Serial number stop
R60E Volvo	Motherwell	111014	119999

The operator should know, follow, and pay attention to warnings and information stated on decals and plates. Not all plates/decals are installed on all machines since they are dependent on market and machine.

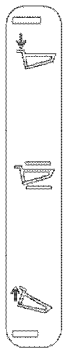
The decals must be kept free from dirt, so that they are legible and easy to understand. Decals/plates that have been lost, damaged, painted over, or no longer are legible for other reasons, must be replaced immediately. Appropriate safety decals must be fitted to all spare parts.

The part number (order number) of each plate/decal can be found in the Parts Catalogue.



V1189625

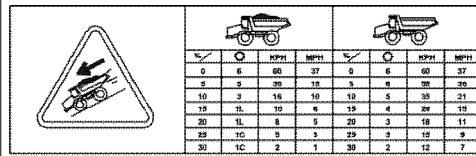
Figure 1



V1188066

Figure 2

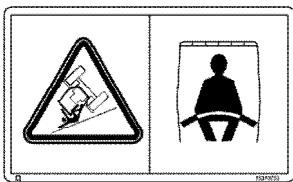
1. Body hoist
Spare part number: 15425054



V1189646

Figure 3

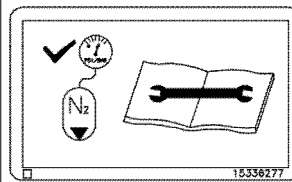
2. WARNING! Gradient
Spare part number: 15335776



V1187844

Figure 4

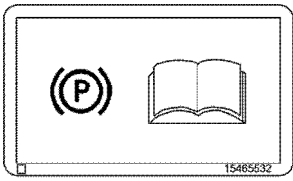
3. WARNING! Seat belt
Spare part number: 15370753



V1187843

Figure 5

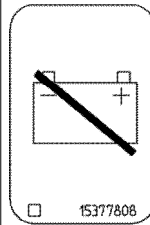
4. WARNING! Suspension struts
Spare part number: 15336277



V1189118

Figure 6

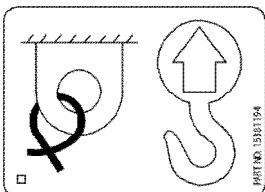
5. Park brake
Spare part number: 15335820



V1187847

Figure 7

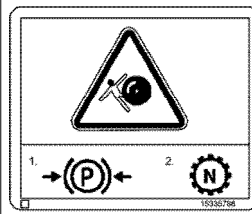
6. Battery shut off
Spare part number: 15377808



V1187848

Figure 8

7. Hook and tie point
Spare part number: 15381194



V1187839

Figure 9

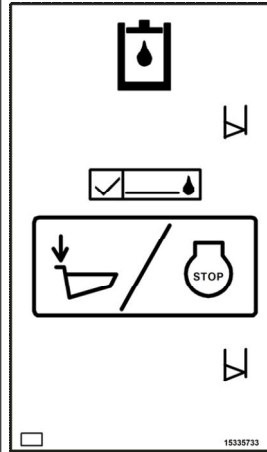
8. WARNING! Park brake
Spare part number: 15335788



V1187834

Figure 10

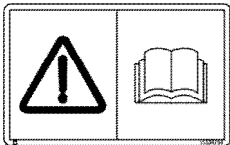
9. CAUTION! Radiator
Spare part number: 15334767



V1188758

Figure 11

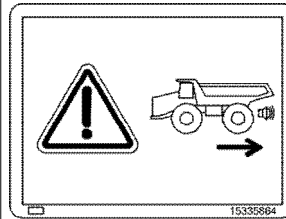
10. Hydraulic oil level
Spare part number: 15335733



V1187833

Figure 12

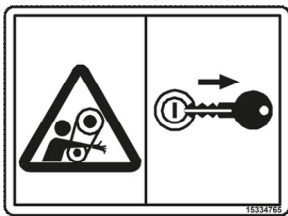
11. Handbook
Spare part number: 15334764



V1187842

Figure 13

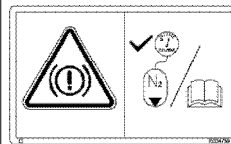
12. WARNING! Reverse alarm
Spare part number: 15335864



V1188757

Figure 14

13. WARNING! Engine stop - entanglement hazard
Spare part number: 15334765



V1187832

Figure 15

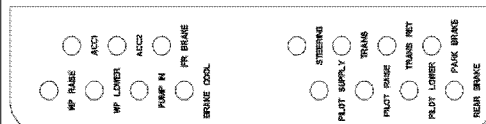
14. WARNING! Accumulators
Spare part number: 15334759



V1187840

Figure 16

15. CAUTION! Cab foam
Spare part number: 15335789



V1188754

Figure 17

16. Diagnostics
Spare part number: 15435709

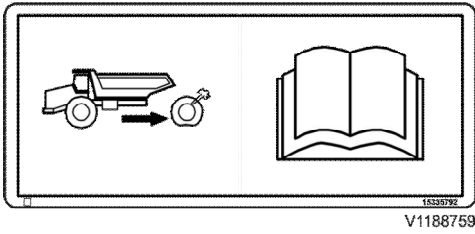


Figure 18

17. Rim clamps
Spare part number: 15335792

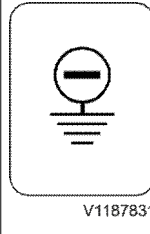


Figure 19

18. Battery earth
Spare part number: 9361787

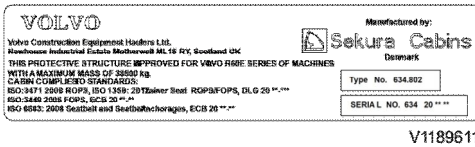


Figure 20

19. Cab ROPS/FOPS
Spare part number: 15433609

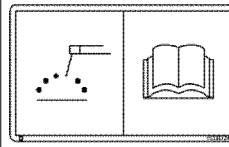


Figure 21

20. Welding
Spare part number: 15334774



Figure 22

21. WARNING! Crush hazard — Body supports
Spare part number: 15335749

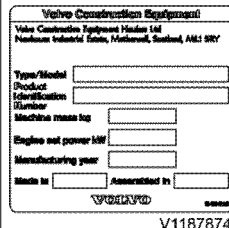


Figure 23

22. Product plate
Spare part number: 15433605

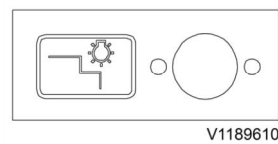


Figure 24

23. Access lights
Spare part number: 1543212

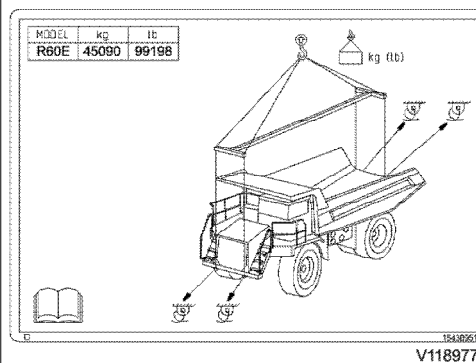
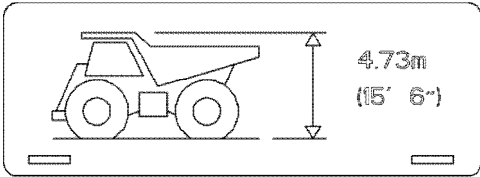


Figure 25

24. Safe lift instructions
Spare part number: 15430951



V1189779

Figure 26

25. Height

Spare part number: 15431031

Document Title: Product identification plates	Function Group: 000	Information Type: Service Information	Date: 4/25/2026
Profile: R60E Volvo			

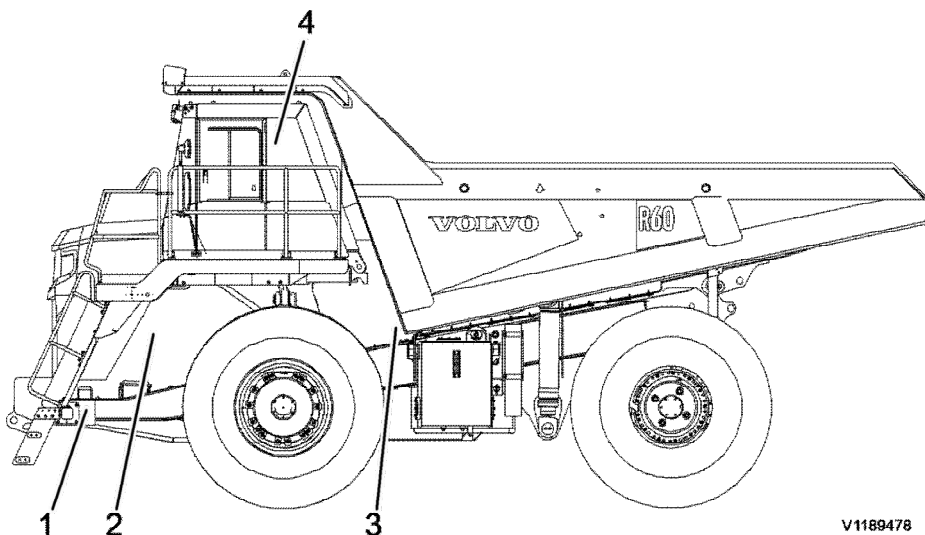
Product identification plates

Showing Selected Profile

Valid for serial numbers			
Model	Production site	Serial number start	Serial number stop
R60E Volvo	Motherwell	111014	119999

The illustration and text below show the product plates that should be found on the machine.

When ordering spare parts and when making enquiries by telephone or correspondence, the model designation and **Product Identification Number (PIN)** should be stated.



V1189478

Figure 1

1. The product plate is located on the left side of the machine's frame by the access steps, and includes:
 - manufacturer's name and address
 - model/type number and complete machine
 - **Product Identification Number (PIN)**
 - machine weight (machine's most common configuration)
 - engine power
 - year of manufacture
 - month of manufacture (only countries within Eurasian Customs Union)
 - country of manufacture
 - assembled in
 - space for CE-mark (only countries within EU/EEC) or EAC-mark (only countries within Eurasian Customs Union)
2. The transmission's type designation and serial number are located on its lower right side of the rear housing.
3. The engine's type designation, part number, and serial number are located on the left hand side of the aftercooler

Product: R60E Volvo Rigid Haulers Service Manual

Full Download: <https://www.arepairmanual.com/downloads/r60e-volvo-rigid-haulers-service-manual/>

4. Cab type, type approval, and serial number are located on the left side in the cab, on the seat mounting frame.

Product plates

Volvo Construction Equipment	
Volvo Construction Equipment Haulers Ltd Newhouse Industrial Estate, Motherwell Scotland, ML1 5RY	
Type/Model	<input type="text"/>
Product Name	<input type="text"/>
Product Identification Number	<input type="text"/>
Machine mass kg	<input type="text"/>
Nominal power kW	<input type="text"/>
Manufacturing year	<input type="text"/>
Made in <input type="text"/>	Assembled in <input type="text"/>
VOLVO	

V1187784

Figure 2

Countries within EU/EEC

Volvo Construction Equipment	
Volvo Construction Equipment Haulers Ltd Newhouse Industrial Estate, Motherwell Scotland, ML1 5RY	
Type/Model	<input type="text"/>
Product Name	<input type="text"/>
Product Identification Number	<input type="text"/>
Machine mass kg	<input type="text"/>
Nominal power kW	<input type="text"/>
Manufacturing year	<input type="text"/>
Made in <input type="text"/>	Assembled in <input type="text"/>
VOLVO	

V1187783

Figure 3

Worldwide (not within EU/EEC or Eurasian Customs Union)

Volvo Construction Equipment	
Volvo Construction Equipment Haulers Ltd Newhouse Industrial Estate, Motherwell, Scotland, ML1 5RY	
Type/Model	<input type="text"/>
Product Identification Number	<input type="text"/>
Machine mass kg	<input type="text"/>
Engine net power kW	<input type="text"/>
Manuf. year/Month	<input type="text"/> / <input type="text"/>
Made in <input type="text"/>	Assembled in <input type="text"/>
VOLVO	

V1187785

Figure 4

Sample manual. Download All 1473 pages at:

<https://www.arepairmanual.com/downloads/r60e-volvo-rigid-haulers-service-manual/>