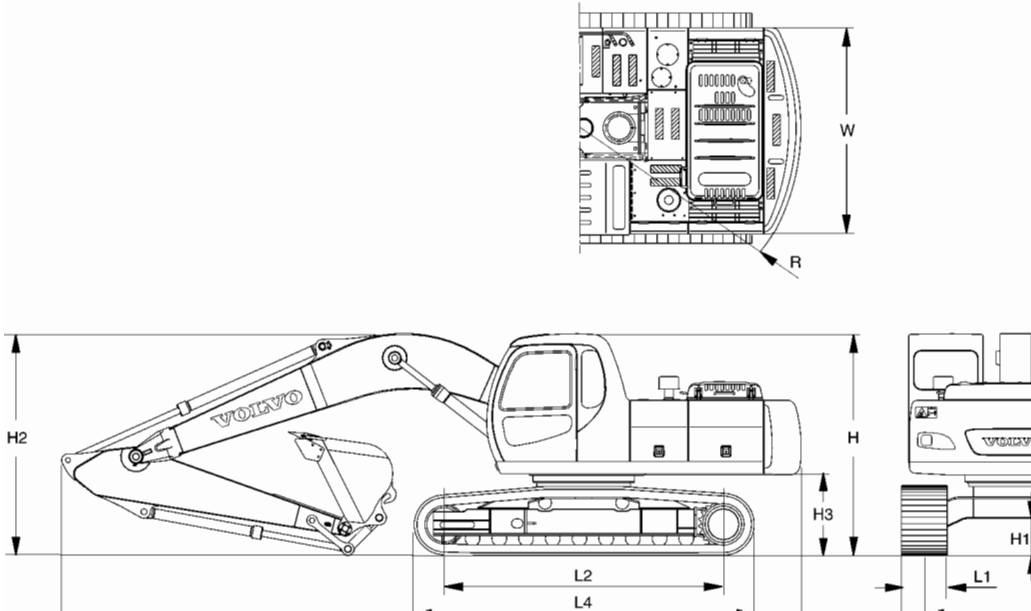


Document Title: <b>General dimensions</b>	Function Group: <b>030</b>	Information Type: <b>Service Information</b>	Date: <b>8/4/2025</b>
Profile:			

## General dimensions



**Figure 1**

Dimensions of machine

**Dimensions, whole machine (EC210 mono boom)**

		Symbol	Unit	Standard	Option			Remark
Front digging unit	Boom length	-	mm (ft)	5700 (18' 8")				
	Arm length	-	mm (ft)	2900 (9' 6")	1800 (5' 11")	2300 (7' 6")	3900 (12' 9")	
Overall height	Cab	H	mm (ft)	2900 (9' 6")				
	Boom	H2	mm (ft)	2980 (9' 9")	3150 (10' 4")	3120 (10' 3")	3590 (11' 9")	
Ground clearance	Lower frame	H1	mm (ft)	*460 (1' 6")				
	Upper frame	H3	mm (ft)	*1025 (3' 4")				
Overall length		L	mm (ft)	9690 (31' 9")	9810 (32' 2")	9750 (31' 1")	9670 (31' 9")	
Tumbler length		L2	mm (ft)	3660 (12")				
Superstructure	Overall width	W	mm (ft)	2710 (8' 11")				
	Turning radius	R	mm (ft)	2850 (9' 4")				

Product: Volvo EC210 Excavators Service Manual

Full Download: <https://www.areservice-manual.com/downloads/volvo-ec210-excavators-service-manual/>

Undercarriage	Shoe width	L1	mm (ft)	600 (1" 11")	700 (2" 3")	800 (2" 7")	900 (2" 11")	@910 (2" 12")	@Swamp shoe
	Track gauge	L3	mm (ft)	2390 (7" 10")					
	Overall width	B	mm (ft)	2990 (9" 10")	3090 (10" 2")	3190 (10" 6")	3290 (10" 10")	3300 (10" 10")	
	Track length	L4	mm (ft)	4460 (14" 8")					

\*: Without shoe grouser

**Dimensions, whole machine (EC210 two piece boom)**

		Symb ol	Unit	Standar d	Option				Remark
Front digging unit	Boom length	-	mm (ft)	5570 (18" 3")					
	Arm length	-	mm (ft)	2900 (9" 6")	1800 (5" 11")	2300 (7" 6")	3900 (12" 9")		
Overall height	Cab	H	mm (ft)	2900 (9" 6")					
	Boom	H2	mm (ft)	2960 (9" 9")	3040 (9" 12")	3040 (9" 12")	3630 (11" 11")		
Ground clearance	Lower frame	H1	mm (ft)	*460 (1" 6")					
	Upper frame	H3	mm (ft)	*1025 (3" 4")					
Overall length		L	mm (ft)	9570 (31" 5")	9670 (31" 9")	9610 (31" 6")	9470 (31" 1")		
Tumbler length		L2	mm (ft)	3660 (12")					
Superstructure	Overall width	W	mm (ft)	2710 (8" 11")					
	Turning radius	R	mm (ft)	2850 (9" 4")					
Undercarriage	Shoe width	L1	mm (ft)	600 (1" 11")	700 (2" 3")	800 (2" 7")	900 (2" 11")	@910 (2" 12")	@Swamp shoe
	Track gauge	L3	mm (ft)	2390 (7" 10")					
	Overall width	B	mm (ft)	2990 (9" 10")	3090 (10" 2")	3190 (10" 6")	3290 (10" 10")	3300 (10" 10")	
	Track length	L4	mm (ft)	4460 (14" 8")					

\*:Without shoe grouser

**Dimensions, whole machine (EC240 mono boom)**

		Symb ol	Unit	Standard	Option				Remark
Front digging unit	Boom length	-	mm (ft)	6000 (19" 8")					
	Arm length	-	mm (ft)	2970 (9" 9")	2000 (6" 7")	2500 (8" 2")	3600 (11" 10")		
Overall height	Cab	H	mm (ft)	2990 (9" 10")					

Sample of manual. Download All 2982 pages at:

<https://www.areservice-manual.com/downloads/volvo-ec210-excavators-service-manual/>

Ground clearance	Boom	H2	mm (ft)	3040 (9" 12")	3350 (10" 12")	3220 (10" 7")	3230 (10" 7")		
	Lower frame	H1	mm (ft)	*480 (1" 7")					
	Upper frame	H3	mm (ft)	*1083 (3" 7")					
Overall length		L	mm (ft)	10170 (33" 4")	10290 (33" 9")	10250 (33" 8")	10245 (33" 7")		
Tumbler length		L2	mm (ft)	3850 (12" 8")					
Superstructure	Overall width	W	mm (ft)	2840 (9" 4")					
	Turning radius	R	mm (ft)	3000 (9" 10")					
Undercarriage	Shoe width	L1	mm (ft)	600 (1" 12")	700 (2" 3")	800 (2" 7")	900 (2" 11")	@910 (2" 12")	@Swamp shoe
	Track gauge	L3	mm (ft)	2590 (8" 6")		3390 (11" 1")			
	Overall width	B	mm (ft)	3190 (10" 6")	3290 (10" 10")		3490 (11" 5")	3500 (11" 6")	
	Track length	L4	mm (ft)	4650 (15" 3")					

\*: Without shoe grouser

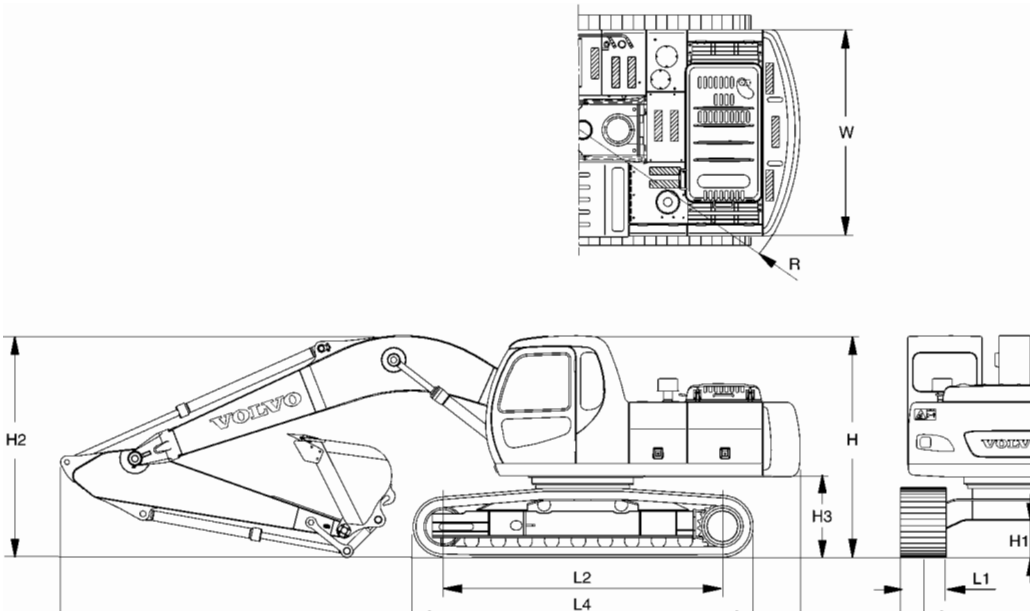
#### Dimensions, whole machine (EC240 two piece boom)

		Symbol	Unit	Standard	Option				Remark
Front digging unit	Boom length	–	mm (ft)	5950 (19" 6")					
	Arm length	–	mm (ft)	2970 (9" 9")	2000 (6" 7")	2500 (8" 2")	3600 (11" 10")		
Overall height	Cab	H	mm (ft)	2990 (9" 10")					
	Boom	H2	mm (ft)	3160 (10" 4")	3280 (10" 9")	3240 (10" 8")	3380 (11" 1")		
Ground clearance	Lower frame	H1	mm (ft)	*480 (1" 7")					
	Upper frame	H3	mm (ft)	*1083 (3" 7")					
Overall length		L	mm (ft)	10170 (33" 4")	10230 (33" 7")	10200 (33" 6")	10180 (33" 5")		
Tumbler length		L2	mm (ft)	3850 (12" 8")					
Superstructure	Overall width	W	mm (ft)	2840 (9" 4")					
	Turning radius	R	mm (ft)	3000 (9" 10")					
Undercarriage	Shoe width	L1	mm (ft)	600 (1" 12")	700 (2" 3")	800 (2" 7")	900 (2" 11")	@910 (2" 12")	@Swamp shoe
	Track gauge	L3	mm (ft)	2590 (8" 6")					
	Overall width	B	mm (ft)	3190 (10" 6")	3290 (10" 10")		3490 (11" 5")	3500 (11" 6")	

Track length	L4	mm (ft)	4650 (15" 3")					
--------------	----	------------	------------------	--	--	--	--	--

Document Title: <b>General dimensions</b>	Function Group: <b>030</b>	Information Type: <b>Service Information</b>	Date: <b>8/4/2025</b>
Profile:			

### General dimensions



**Figure 1**  
Dimensions of machine  
**Dimensions, whole machine (EC210 mono boom)**

		Symbol	Unit	Standard	Option			Remark
Front digging unit	Boom length	–	mm (ft)	5700 (18' 8")				
	Arm length	–	mm (ft)	2900 (9' 6")	1800 (5' 11")	2300 (7' 6")	3900 (12' 9")	
Overall height	Cab	H	mm (ft)	2900 (9' 6")				
	Boom	H2	mm (ft)	2980 (9' 9")	3150 (10' 4")	3120 (10' 3")	3590 (11' 9")	
Ground clearance	Lower frame	H1	mm (ft)	*460 (1' 6")				
	Upper frame	H3	mm (ft)	*1025 (3' 4")				
Overall length		L	mm (ft)	9690 (31' 9")	9810 (32' 2")	9750 (31' 1")	9670 (31' 9")	
Tumbler length		L2	mm (ft)	3660 (12")				
Superstructure	Overall width	W	mm (ft)	2710 (8' 11")				
	Turning radius	R	mm (ft)	2850 (9' 4")				

Undercarriage	Shoe width	L1	mm (ft)	600 (1" 11")	700 (2" 3")	800 (2" 7")	900 (2" 11")	@910 (2" 12")	@Swamp shoe
	Track gauge	L3	mm (ft)	2390 (7" 10")					
	Overall width	B	mm (ft)	2990 (9" 10")	3090 (10" 2")	3190 (10" 6")	3290 (10" 10")	3300 (10" 10")	
	Track length	L4	mm (ft)	4460 (14" 8")					

\*: Without shoe grouser

#### Dimensions, whole machine (EC210 two piece boom)

		Symb ol	Unit	Standar d	Option				Remark
Front digging unit	Boom length	-	mm (ft)	5570 (18" 3")					
	Arm length	-	mm (ft)	2900 (9" 6")	1800 (5" 11")	2300 (7" 6")	3900 (12" 9")		
Overall height	Cab	H	mm (ft)	2900 (9" 6")					
	Boom	H2	mm (ft)	2960 (9" 9")	3040 (9" 12")	3040 (9" 12")	3630 (11" 11")		
Ground clearance	Lower frame	H1	mm (ft)	*460 (1" 6")					
	Upper frame	H3	mm (ft)	*1025 (3" 4")					
Overall length		L	mm (ft)	9570 (31" 5")	9670 (31" 9")	9610 (31" 6")	9470 (31" 1")		
Tumbler length		L2	mm (ft)	3660 (12")					
Superstructure	Overall width	W	mm (ft)	2710 (8" 11")					
	Turning radius	R	mm (ft)	2850 (9" 4")					
Undercarriage	Shoe width	L1	mm (ft)	600 (1" 11")	700 (2" 3")	800 (2" 7")	900 (2" 11")	@910 (2" 12")	@Swamp shoe
	Track gauge	L3	mm (ft)	2390 (7" 10")					
	Overall width	B	mm (ft)	2990 (9" 10")	3090 (10" 2")	3190 (10" 6")	3290 (10" 10")	3300 (10" 10")	
	Track length	L4	mm (ft)	4460 (14" 8")					

\*:Without shoe grouser

#### Dimensions, whole machine (EC240 mono boom)

		Symb ol	Unit	Standard	Option				Remark
Front digging unit	Boom length	-	mm (ft)	6000 (19" 8")					
	Arm length	-	mm (ft)	2970 (9" 9")	2000 (6" 7")	2500 (8" 2")	3600 (11" 10")		
Overall height	Cab	H	mm (ft)	2990 (9" 10")					

Ground clearance	Boom	H2	mm (ft)	3040 (9" 12")	3350 (10" 12")	3220 (10" 7")	3230 (10" 7")		
	Lower frame	H1	mm (ft)	*480 (1" 7")					
	Upper frame	H3	mm (ft)	*1083 (3" 7")					
Overall length		L	mm (ft)	10170 (33" 4")	10290 (33" 9")	10250 (33" 8")	10245 (33" 7")		
Tumbler length		L2	mm (ft)	3850 (12" 8")					
Superstructure	Overall width	W	mm (ft)	2840 (9" 4")					
	Turning radius	R	mm (ft)	3000 (9" 10")					
Undercarriage	Shoe width	L1	mm (ft)	600 (1" 12")	700 (2" 3")	800 (2" 7")	900 (2" 11")	@910 (2" 12")	@Swamp shoe
	Track gauge	L3	mm (ft)	2590 (8" 6")		3390 (11" 1")			
	Overall width	B	mm (ft)	3190 (10" 6")	3290 (10" 10")		3490 (11" 5")	3500 (11" 6")	
	Track length	L4	mm (ft)	4650 (15" 3")					

\*: Without shoe grouser

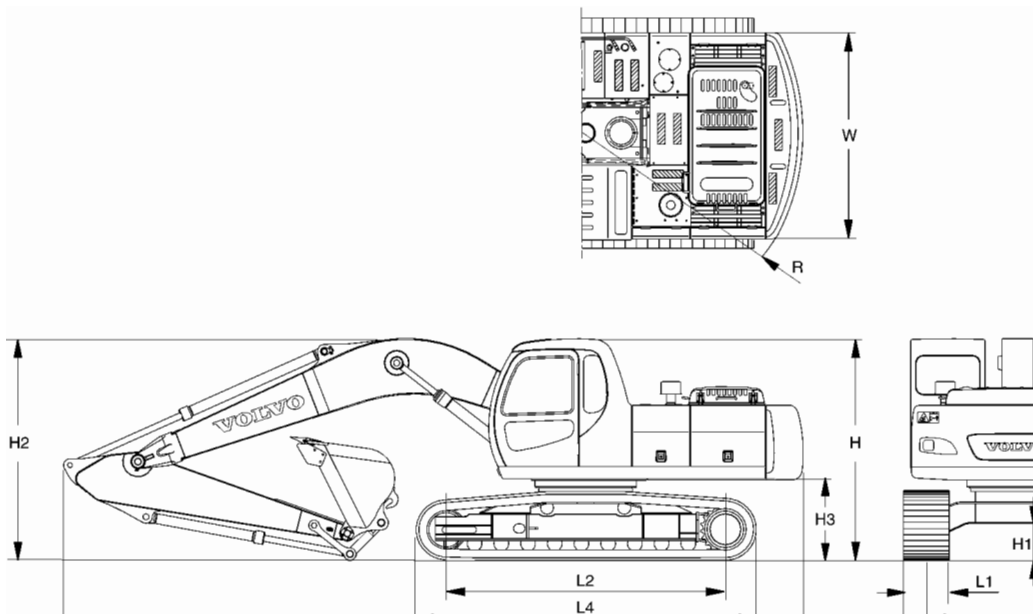
#### Dimensions, whole machine (EC240 two piece boom)

		Symbol	Unit	Standard	Option				Remark
Front digging unit	Boom length	–	mm (ft)	5950 (19" 6")					
	Arm length	–	mm (ft)	2970 (9" 9")	2000 (6" 7")	2500 (8" 2")	3600 (11" 10")		
Overall height	Cab	H	mm (ft)	2990 (9" 10")					
	Boom	H2	mm (ft)	3160 (10" 4")	3280 (10" 9")	3240 (10" 8")	3380 (11" 1")		
Ground clearance	Lower frame	H1	mm (ft)	*480 (1" 7")					
	Upper frame	H3	mm (ft)	*1083 (3" 7")					
Overall length		L	mm (ft)	10170 (33" 4")	10230 (33" 7")	10200 (33" 6")	10180 (33" 5")		
Tumbler length		L2	mm (ft)	3850 (12" 8")					
Superstructure	Overall width	W	mm (ft)	2840 (9" 4")					
	Turning radius	R	mm (ft)	3000 (9" 10")					
Undercarriage	Shoe width	L1	mm (ft)	600 (1" 12")	700 (2" 3")	800 (2" 7")	900 (2" 11")	@910 (2" 12")	@Swamp shoe
	Track gauge	L3	mm (ft)	2590 (8" 6")					
	Overall width	B	mm (ft)	3190 (10" 6")	3290 (10" 10")		3490 (11" 5")	3500 (11" 6")	

Track length	L4	mm (ft)	4650 (15' 3")					
--------------	----	------------	------------------	--	--	--	--	--

Document Title: <b>General dimensions</b>	Function Group: <b>030</b>	Information Type: <b>Service Information</b>	Date: <b>8/4/2025</b>
Profile:			

### General dimensions



**Figure 1**  
Dimensions of machine  
**Dimensions, whole machine (EC210 mono boom)**

		Symbol	Unit	Standard	Option			Remark
Front digging unit	Boom length	–	mm (ft)	5700 (18' 8")				
	Arm length	–	mm (ft)	2900 (9' 6")	1800 (5' 11")	2300 (7' 6")	3900 (12' 9")	
Overall height	Cab	H	mm (ft)	2900 (9' 6")				
	Boom	H2	mm (ft)	2980 (9' 9")	3150 (10' 4")	3120 (10' 3")	3590 (11' 9")	
Ground clearance	Lower frame	H1	mm (ft)	*460 (1' 6")				
	Upper frame	H3	mm (ft)	*1025 (3' 4")				
Overall length		L	mm (ft)	9690 (31' 9")	9810 (32' 2")	9750 (31' 1")	9670 (31' 9")	
Tumbler length		L2	mm (ft)	3660 (12")				
Superstructure	Overall width	W	mm (ft)	2710 (8' 11")				
	Turning radius	R	mm (ft)	2850 (9' 4")				

Undercarriage	Shoe width	L1	mm (ft)	600 (1" 11")	700 (2" 3")	800 (2" 7")	900 (2" 11")	@910 (2" 12")	@Swamp shoe
	Track gauge	L3	mm (ft)	2390 (7" 10")					
	Overall width	B	mm (ft)	2990 (9" 10")	3090 (10" 2")	3190 (10" 6")	3290 (10" 10")	3300 (10" 10")	
	Track length	L4	mm (ft)	4460 (14" 8")					

\*: Without shoe grouser

#### Dimensions, whole machine (EC210 two piece boom)

		Symb ol	Unit	Standar d	Option				Remark
Front digging unit	Boom length	-	mm (ft)	5570 (18" 3")					
	Arm length	-	mm (ft)	2900 (9" 6")	1800 (5" 11")	2300 (7" 6")	3900 (12" 9")		
Overall height	Cab	H	mm (ft)	2900 (9" 6")					
	Boom	H2	mm (ft)	2960 (9" 9")	3040 (9" 12")	3040 (9" 12")	3630 (11" 11")		
Ground clearance	Lower frame	H1	mm (ft)	*460 (1" 6")					
	Upper frame	H3	mm (ft)	*1025 (3" 4")					
Overall length		L	mm (ft)	9570 (31" 5")	9670 (31" 9")	9610 (31" 6")	9470 (31" 1")		
Tumbler length		L2	mm (ft)	3660 (12")					
Superstructure	Overall width	W	mm (ft)	2710 (8" 11")					
	Turning radius	R	mm (ft)	2850 (9" 4")					
Undercarriage	Shoe width	L1	mm (ft)	600 (1" 11")	700 (2" 3")	800 (2" 7")	900 (2" 11")	@910 (2" 12")	@Swamp shoe
	Track gauge	L3	mm (ft)	2390 (7" 10")					
	Overall width	B	mm (ft)	2990 (9" 10")	3090 (10" 2")	3190 (10" 6")	3290 (10" 10")	3300 (10" 10")	
	Track length	L4	mm (ft)	4460 (14" 8")					

\*:Without shoe grouser

#### Dimensions, whole machine (EC240 mono boom)

		Symb ol	Unit	Standard	Option				Remark
Front digging unit	Boom length	-	mm (ft)	6000 (19" 8")					
	Arm length	-	mm (ft)	2970 (9" 9")	2000 (6" 7")	2500 (8" 2")	3600 (11" 10")		
Overall height	Cab	H	mm (ft)	2990 (9" 10")					

Ground clearance	Boom	H2	mm (ft)	3040 (9" 12")	3350 (10" 12")	3220 (10" 7")	3230 (10" 7")		
	Lower frame	H1	mm (ft)	*480 (1" 7")					
	Upper frame	H3	mm (ft)	*1083 (3" 7")					
Overall length		L	mm (ft)	10170 (33" 4")	10290 (33" 9")	10250 (33" 8")	10245 (33" 7")		
Tumbler length		L2	mm (ft)	3850 (12" 8")					
Superstructure	Overall width	W	mm (ft)	2840 (9" 4")					
	Turning radius	R	mm (ft)	3000 (9" 10")					
Undercarriage	Shoe width	L1	mm (ft)	600 (1" 12")	700 (2" 3")	800 (2" 7")	900 (2" 11")	@910 (2" 12")	@Swamp shoe
	Track gauge	L3	mm (ft)	2590 (8" 6")		3390 (11" 1")			
	Overall width	B	mm (ft)	3190 (10" 6")	3290 (10" 10")		3490 (11" 5")	3500 (11" 6")	
	Track length	L4	mm (ft)	4650 (15" 3")					

\*: Without shoe grouser

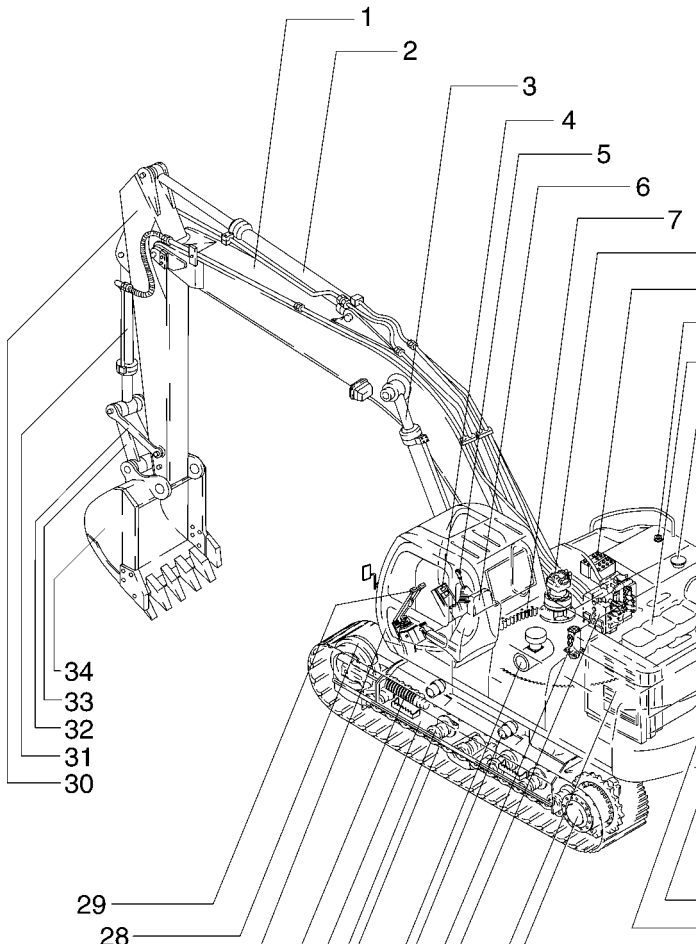
#### Dimensions, whole machine (EC240 two piece boom)

		Symbol	Unit	Standard	Option				Remark
Front digging unit	Boom length	–	mm (ft)	5950 (19" 6")					
	Arm length	–	mm (ft)	2970 (9" 9")	2000 (6" 7")	2500 (8" 2")	3600 (11" 10")		
Overall height	Cab	H	mm (ft)	2990 (9" 10")					
	Boom	H2	mm (ft)	3160 (10" 4")	3280 (10" 9")	3240 (10" 8")	3380 (11" 1")		
Ground clearance	Lower frame	H1	mm (ft)	*480 (1" 7")					
	Upper frame	H3	mm (ft)	*1083 (3" 7")					
Overall length		L	mm (ft)	10170 (33" 4")	10230 (33" 7")	10200 (33" 6")	10180 (33" 5")		
Tumbler length		L2	mm (ft)	3850 (12" 8")					
Superstructure	Overall width	W	mm (ft)	2840 (9" 4")					
	Turning radius	R	mm (ft)	3000 (9" 10")					
Undercarriage	Shoe width	L1	mm (ft)	600 (1" 12")	700 (2" 3")	800 (2" 7")	900 (2" 11")	@910 (2" 12")	@Swamp shoe
	Track gauge	L3	mm (ft)	2590 (8" 6")					
	Overall width	B	mm (ft)	3190 (10" 6")	3290 (10" 10")		3490 (11" 5")	3500 (11" 6")	

Track length	L4	mm (ft)	4650 (15" 3")					
--------------	----	------------	------------------	--	--	--	--	--

Document Title: <b>Location of components</b>	Function Group: <b>030</b>	Information Type: <b>Service Information</b>	Date: <b>8/4/2025</b>
Profile:			

### Location of components



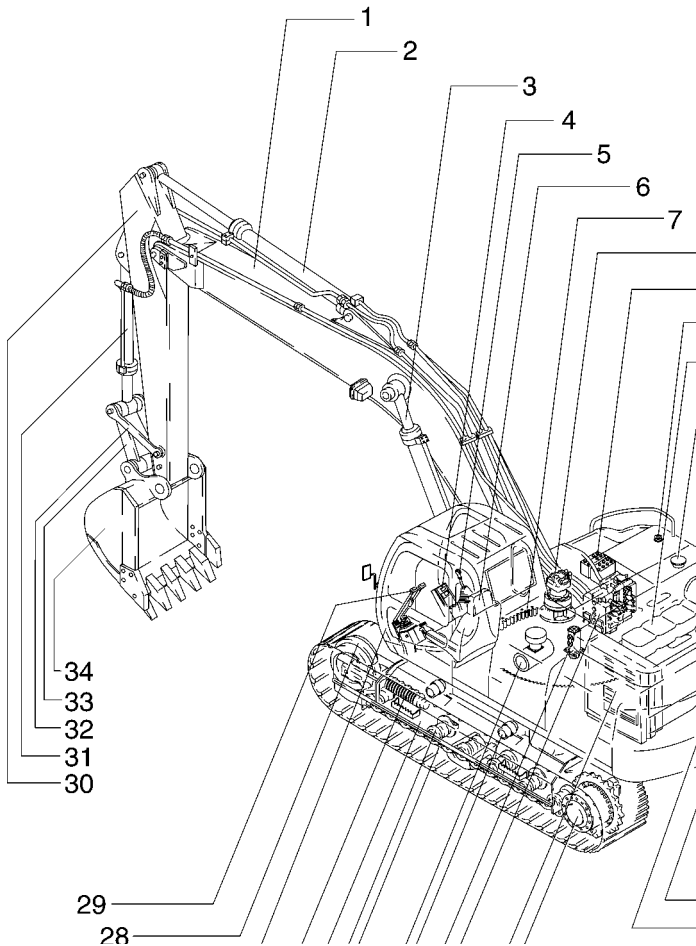
**Figure 1**

Location of components

1	Boom	13	Muffler	25	Undercarriage
2	Arm cylinder	14	Cowl	26	Spring package
3	Boom cylinder	15	Counterweight	27	Cab
4	Switch board	16	Hydraulic pump	28	Idler
5	Control lever	17	Track motor and gearbox	29	Remote control lever (Travel)
6	Operator seat	18	Radiator and oil cooler	30	Arm
7	Slew gearbox	19	Main control valve	31	Bucket cylinder
8	Slew motor and gearbox	20	Turning joint	32	Connecting rod
9	Battery	21	Top roller	33	Link
10	Fuel tank	22	Air cleaner	34	Bucket
11	Engine	23	Track link		
12	Hydraulic tank	24	Bottom roller		

Document Title: <b>Location of components</b>	Function Group: <b>030</b>	Information Type: <b>Service Information</b>	Date: <b>8/4/2025</b>
Profile:			

### Location of components



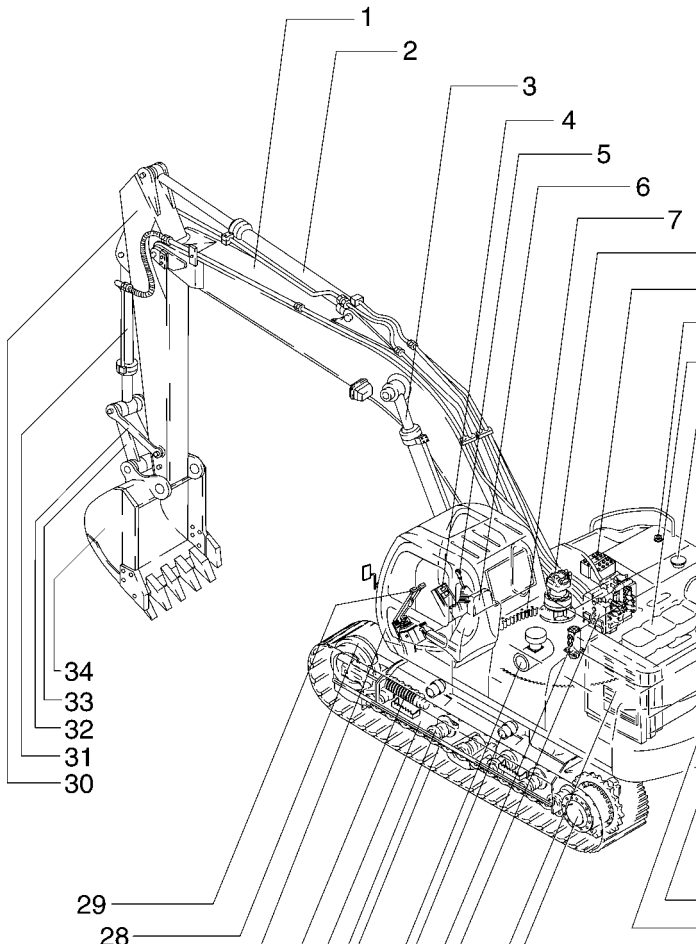
**Figure 1**

Location of components

1	Boom	13	Muffler	25	Undercarriage
2	Arm cylinder	14	Cowl	26	Spring package
3	Boom cylinder	15	Counterweight	27	Cab
4	Switch board	16	Hydraulic pump	28	Idler
5	Control lever	17	Track motor and gearbox	29	Remote control lever (Travel)
6	Operator seat	18	Radiator and oil cooler	30	Arm
7	Slew gearbox	19	Main control valve	31	Bucket cylinder
8	Slew motor and gearbox	20	Turning joint	32	Connecting rod
9	Battery	21	Top roller	33	Link
10	Fuel tank	22	Air cleaner	34	Bucket
11	Engine	23	Track link		
12	Hydraulic tank	24	Bottom roller		

Document Title: <b>Location of components</b>	Function Group: <b>030</b>	Information Type: <b>Service Information</b>	Date: <b>8/4/2025</b>
Profile:			

### Location of components



**Figure 1**

Location of components

1	Boom	13	Muffler	25	Undercarriage
2	Arm cylinder	14	Cowl	26	Spring package
3	Boom cylinder	15	Counterweight	27	Cab
4	Switch board	16	Hydraulic pump	28	Idler
5	Control lever	17	Track motor and gearbox	29	Remote control lever (Travel)
6	Operator seat	18	Radiator and oil cooler	30	Arm
7	Slew gearbox	19	Main control valve	31	Bucket cylinder
8	Slew motor and gearbox	20	Turning joint	32	Connecting rod
9	Battery	21	Top roller	33	Link
10	Fuel tank	22	Air cleaner	34	Bucket
11	Engine	23	Track link		
12	Hydraulic tank	24	Bottom roller		

Document Title: <b>Measurement conversion tables</b>	Function Group: <b>030</b>	Information Type: <b>Service Information</b>	Date: <b>8/4/2025</b>
Profile:			

## Measurement conversion tables

### Length

Unit	cm	m	km	in	ft	yd	mile
cm	1	0.01	0.00001	0.3937	0.03281	0.01094	0.000006
m	100	1	0.001	39.37	3.2808	1.0936	0.00062
km	100000	1000	1	39370.7	3280.8	1093.6	0.62137
in	2.54	0.0254	0.000025	1	0.08333	0.02777	0.000015
ft	30.48	0.3048	0.000304	12	1	0.3333	0.000189
yd	91.44	0.9144	0.000914	36	3	1	0.000568
mile	160930	1609.3	1.6093	63360	5280	1760	1

1 mm = 0.1 cm, 1 mm = 0.001 m

### Area

Unit	cm <sup>2</sup>	m <sup>2</sup>	km <sup>2</sup>	a	ft <sup>2</sup>	yd <sup>2</sup>	in <sup>2</sup>
cm <sup>2</sup>	1	0.0001	-	0.000001	0.001076	0.000012	0.155000
m <sup>2</sup>	10000	1	0.000001	0.01	10.764	1.1958	1550.000
km <sup>2</sup>	-	1000000	1	10000	1076400	1195800	-
a	0.01	100	0.0001	1	1076.4	119.58	-
ft <sup>2</sup>	-	0.092903	-	0.000929	1	0.1111	144.000
yd <sup>2</sup>	-	0.83613	-	0.008361	9	1	1296.00
in <sup>2</sup>	6.4516	0.000645	-	-	0.006943	0.000771	1

1 ha = 100 a, 1 mile<sup>2</sup> = 259 ha = 2.59 km<sup>2</sup>

### Volume

Unit	cm <sup>3</sup> = cc	m <sup>3</sup>	Liter	in <sup>3</sup>	ft <sup>3</sup>	yd <sup>3</sup>
cm <sup>3</sup> = m liter	1	0.000001	0.001	0.061024	0.000035	0.000001
m <sup>3</sup>	1000000	1	1000	61024	35.315	1.30796
Liter	1000	0.001	1	61.024	0.035315	0.001308
in <sup>3</sup>	16.387	0.000016	0.01638	1	0.000578	0.000021
ft <sup>3</sup>	28316.8	0.028317	28.317	1728	1	0.03704
yd <sup>3</sup>	764529.8	0.76453	764.53	46656	27	1

1 gal (US) = 3785.41 cm<sup>3</sup> = 231 in<sup>3</sup> = 0.83267 gal (US)

### Weight

Unit	g	kg	t	oz	lb
g	1	0.001	0.000001	0.03527	0.0022
kg	1000	1	0.001	35.273	2.20459
t	1000000	1000	1	35273	2204.59

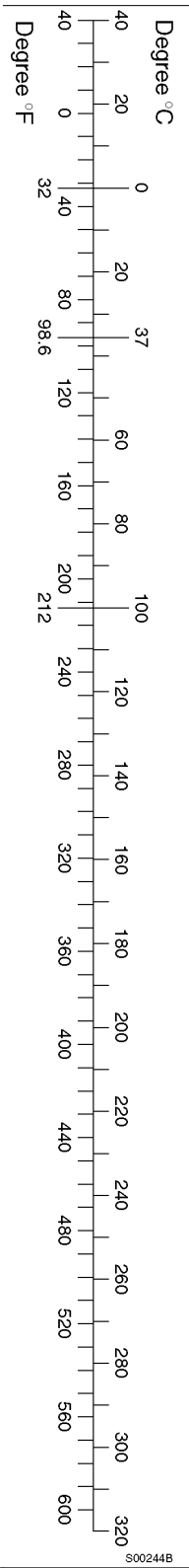
oz	28.3495	0.02835	0.000028	1	0.0625
lb	453.592	0.45359	0.000454	16	1
1 tonne (metric) = 1.1023 ton (US) = 0.9842 ton (UK)					

### Pressure

Unit	kgf/cm <sup>2</sup>	bar	Pa=N/m <sup>2</sup>	kPa	lbf / in <sup>2</sup>	lbf / ft <sup>2</sup>
kgf / cm <sup>2</sup>	1	0.98067	98066.5	98.0665	14.2233	2048.16
bar	1.01972	1	100000	100	14.5037	2088.6
Pa=N / m <sup>2</sup>	0.00001	0.001	1	0.001	0.00015	0.02086
kPa	0.01020	0.01	1000	1	0.14504	20.886
lbf / in <sup>2</sup>	0.07032	0.0689	6894.76	6.89476	1	144
lbf / ft <sup>2</sup>	0.00047	0.00047	47.88028	0.04788	0.00694	1
1 kgf / cm <sup>2</sup> = 735.56 Torr (mmHg) = 0.96784 atm						

### Approximate conversions

SI Unit	Conversion Factor	Non-SI Unit	Conversion Factor	SI Unit
<b>Torque</b>				
newton meter (N·m)	x 10.2	= kgf·cm	x 0.8664	= (lbf·in)
newton meter (N·m)	x 0.74	= lb·ft	x 1.36	= N·m
newton meter (N·m)	x 0.102	= kgf·m	x 7.22	= (lbf·ft)
<b>Pressure (Pa = N / m<sup>2</sup>)</b>				
kilopascal (kPa)	x 4.0	= in. H <sub>2</sub> O	x 0.249	= kPa
kilopascal (kPa)	x 0.30	= in. Hg	x 3.38	= kPa
kilopascal (kPa)	x 0.145	= psi	x 6.89	= kPa
(bar)	x 14.5	= psi	x 0.069	= (bar)
(kgf / cm <sup>2</sup> )	x 14.22	= psi	x 0.070	= (kgf / cm <sup>2</sup> )
(newton / mm <sup>2</sup> )	x 145.04	= psi	x 0.069	= (bar)
megapascal (MPa)	x 145	= psi	x 0.00689	= MPa
<b>Power (W = J / s)</b>				
kilowatt (kW)	x 1.36	= PS (cv)	x 0.736	= kW
kilowatt (kW)	x 1.34	= HP	x 0.746	= kW
kilowatt (kW)	x 0.948	= Btu / s	x 1.055	= kW
watt (W)	x 0.74	= ft·lb / s	x 1.36	= W
<b>Energy (J = N·m)</b>				
kilojoule (kJ)	x 0.948	= Btu	x 1.055	= kJ
joule (J)	x 0.239	= calorie	x 4.19	= J
<b>Velocity and Acceleration</b>				
meter per sec <sup>2</sup> (m / s <sup>2</sup> )	x 3.28	= ft / s <sup>2</sup>	x 0.305	= m / s <sup>2</sup>
meter per sec (m / s)	x 3.28	= ft / s	x 0.305	= m / s
kilometer per hour (km / h)	x 0.62	= mph	x 1.61	= km / h
<b>Horse power /torque</b>				
BHP x 5252 rpm = TQ (lb·ft)			TQ x rpm 5252 = B.H.P.	
<b>Temperature</b>				
°C = (°F - 32) / 1.8		°F = (°C x 1.8) + 32		
<b>Flow Rate</b>				
liter / min (dm <sup>3</sup> / min)	x 0.264	= US gal / min x 3.785	= liter / min	



Note : ( ) non-si unit

Document Title: <b>Measurement conversion tables</b>	Function Group: <b>030</b>	Information Type: <b>Service Information</b>	Date: <b>8/4/2025</b>
Profile:			

## Measurement conversion tables

### Length

Unit	cm	m	km	in	ft	yd	mile
cm	1	0.01	0.00001	0.3937	0.03281	0.01094	0.000006
m	100	1	0.001	39.37	3.2808	1.0936	0.00062
km	100000	1000	1	39370.7	3280.8	1093.6	0.62137
in	2.54	0.0254	0.000025	1	0.08333	0.02777	0.000015
ft	30.48	0.3048	0.000304	12	1	0.3333	0.000189
yd	91.44	0.9144	0.000914	36	3	1	0.000568
mile	160930	1609.3	1.6093	63360	5280	1760	1

1 mm = 0.1 cm, 1 mm = 0.001 m

### Area

Unit	cm <sup>2</sup>	m <sup>2</sup>	km <sup>2</sup>	a	ft <sup>2</sup>	yd <sup>2</sup>	in <sup>2</sup>
cm <sup>2</sup>	1	0.0001	-	0.000001	0.001076	0.000012	0.155000
m <sup>2</sup>	10000	1	0.000001	0.01	10.764	1.1958	1550.000
km <sup>2</sup>	-	1000000	1	10000	1076400	1195800	-
a	0.01	100	0.0001	1	1076.4	119.58	-
ft <sup>2</sup>	-	0.092903	-	0.000929	1	0.1111	144.000
yd <sup>2</sup>	-	0.83613	-	0.008361	9	1	1296.00
in <sup>2</sup>	6.4516	0.000645	-	-	0.006943	0.000771	1

1 ha = 100 a, 1 mile<sup>2</sup> = 259 ha = 2.59 km<sup>2</sup>

### Volume

Unit	cm <sup>3</sup> = cc	m <sup>3</sup>	Liter	in <sup>3</sup>	ft <sup>3</sup>	yd <sup>3</sup>
cm <sup>3</sup> = m liter	1	0.000001	0.001	0.061024	0.000035	0.000001
m <sup>3</sup>	1000000	1	1000	61024	35.315	1.30796
Liter	1000	0.001	1	61.024	0.035315	0.001308
in <sup>3</sup>	16.387	0.000016	0.01638	1	0.000578	0.000021
ft <sup>3</sup>	28316.8	0.028317	28.317	1728	1	0.03704
yd <sup>3</sup>	764529.8	0.76453	764.53	46656	27	1

1 gal (US) = 3785.41 cm<sup>3</sup> = 231 in<sup>3</sup> = 0.83267 gal (US)

### Weight

Unit	g	kg	t	oz	lb
g	1	0.001	0.000001	0.03527	0.0022
kg	1000	1	0.001	35.273	2.20459
t	1000000	1000	1	35273	2204.59

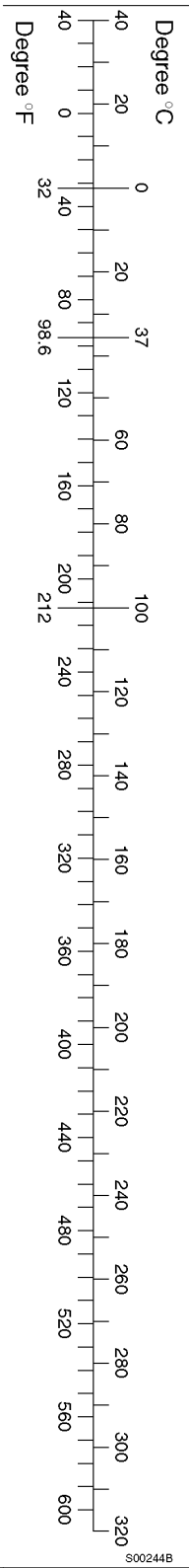
oz	28.3495	0.02835	0.000028	1	0.0625
lb	453.592	0.45359	0.000454	16	1
1 tonne (metric) = 1.1023 ton (US) = 0.9842 ton (UK)					

### Pressure

Unit	kgf/cm <sup>2</sup>	bar	Pa=N/m <sup>2</sup>	kPa	lbf / in <sup>2</sup>	lbf / ft <sup>2</sup>
kgf / cm <sup>2</sup>	1	0.98067	98066.5	98.0665	14.2233	2048.16
bar	1.01972	1	100000	100	14.5037	2088.6
Pa=N / m <sup>2</sup>	0.00001	0.001	1	0.001	0.00015	0.02086
kPa	0.01020	0.01	1000	1	0.14504	20.886
lbf / in <sup>2</sup>	0.07032	0.0689	6894.76	6.89476	1	144
lbf / ft <sup>2</sup>	0.00047	0.00047	47.88028	0.04788	0.00694	1
1 kgf / cm <sup>2</sup> = 735.56 Torr (mmHg) = 0.96784 atm						

### Approximate conversions

SI Unit	Conversion Factor	Non-SI Unit	Conversion Factor	SI Unit
<b>Torque</b>				
newton meter (N·m)	x 10.2	= kgf·cm	x 0.8664	= (lbf·in)
newton meter (N·m)	x 0.74	= lb·ft	x 1.36	= N·m
newton meter (N·m)	x 0.102	= kgf·m	x 7.22	= (lbf·ft)
<b>Pressure (Pa = N / m<sup>2</sup>)</b>				
kilopascal (kPa)	x 4.0	= in. H <sub>2</sub> O	x 0.249	= kPa
kilopascal (kPa)	x 0.30	= in. Hg	x 3.38	= kPa
kilopascal (kPa)	x 0.145	= psi	x 6.89	= kPa
(bar)	x 14.5	= psi	x 0.069	= (bar)
(kgf / cm <sup>2</sup> )	x 14.22	= psi	x 0.070	= (kgf / cm <sup>2</sup> )
(newton / mm <sup>2</sup> )	x 145.04	= psi	x 0.069	= (bar)
megapascal (MPa)	x 145	= psi	x 0.00689	= MPa
<b>Power (W = J / s)</b>				
kilowatt (kW)	x 1.36	= PS (cv)	x 0.736	= kW
kilowatt (kW)	x 1.34	= HP	x 0.746	= kW
kilowatt (kW)	x 0.948	= Btu / s	x 1.055	= kW
watt (W)	x 0.74	= ft·lb / s	x 1.36	= W
<b>Energy (J = N·m)</b>				
kilojoule (kJ)	x 0.948	= Btu	x 1.055	= kJ
joule (J)	x 0.239	= calorie	x 4.19	= J
<b>Velocity and Acceleration</b>				
meter per sec <sup>2</sup> (m / s <sup>2</sup> )	x 3.28	= ft / s <sup>2</sup>	x 0.305	= m / s <sup>2</sup>
meter per sec (m / s)	x 3.28	= ft / s	x 0.305	= m / s
kilometer per hour (km / h)	x 0.62	= mph	x 1.61	= km / h
<b>Horse power /torque</b>				
BHP x 5252 rpm = TQ (lb·ft)			TQ x rpm 5252 = B.H.P.	
<b>Temperature</b>				
°C = (°F - 32) / 1.8		°F = (°C x 1.8) + 32		
<b>Flow Rate</b>				
liter / min (dm <sup>3</sup> / min)	x 0.264	= US gal / min x 3.785	= liter / min	



Note : ( ) non-si unit

Document Title: <b>Measurement conversion tables</b>	Function Group: <b>030</b>	Information Type: <b>Service Information</b>	Date: <b>8/4/2025</b>
Profile:			

## Measurement conversion tables

### Length

Unit	cm	m	km	in	ft	yd	mile
cm	1	0.01	0.00001	0.3937	0.03281	0.01094	0.000006
m	100	1	0.001	39.37	3.2808	1.0936	0.00062
km	100000	1000	1	39370.7	3280.8	1093.6	0.62137
in	2.54	0.0254	0.000025	1	0.08333	0.02777	0.000015
ft	30.48	0.3048	0.000304	12	1	0.3333	0.000189
yd	91.44	0.9144	0.000914	36	3	1	0.000568
mile	160930	1609.3	1.6093	63360	5280	1760	1

1 mm = 0.1 cm, 1 mm = 0.001 m

### Area

Unit	cm <sup>2</sup>	m <sup>2</sup>	km <sup>2</sup>	a	ft <sup>2</sup>	yd <sup>2</sup>	in <sup>2</sup>
cm <sup>2</sup>	1	0.0001	-	0.000001	0.001076	0.000012	0.155000
m <sup>2</sup>	10000	1	0.000001	0.01	10.764	1.1958	1550.000
km <sup>2</sup>	-	1000000	1	10000	1076400	1195800	-
a	0.01	100	0.0001	1	1076.4	119.58	-
ft <sup>2</sup>	-	0.092903	-	0.000929	1	0.1111	144.000
yd <sup>2</sup>	-	0.83613	-	0.008361	9	1	1296.00
in <sup>2</sup>	6.4516	0.000645	-	-	0.006943	0.000771	1

1 ha = 100 a, 1 mile<sup>2</sup> = 259 ha = 2.59 km<sup>2</sup>

### Volume

Unit	cm <sup>3</sup> = cc	m <sup>3</sup>	Liter	in <sup>3</sup>	ft <sup>3</sup>	yd <sup>3</sup>
cm <sup>3</sup> = m liter	1	0.000001	0.001	0.061024	0.000035	0.000001
m <sup>3</sup>	1000000	1	1000	61024	35.315	1.30796
Liter	1000	0.001	1	61.024	0.035315	0.001308
in <sup>3</sup>	16.387	0.000016	0.01638	1	0.000578	0.000021
ft <sup>3</sup>	28316.8	0.028317	28.317	1728	1	0.03704
yd <sup>3</sup>	764529.8	0.76453	764.53	46656	27	1

1 gal (US) = 3785.41 cm<sup>3</sup> = 231 in<sup>3</sup> = 0.83267 gal (US)

### Weight

Unit	g	kg	t	oz	lb
g	1	0.001	0.000001	0.03527	0.0022
kg	1000	1	0.001	35.273	2.20459
t	1000000	1000	1	35273	2204.59

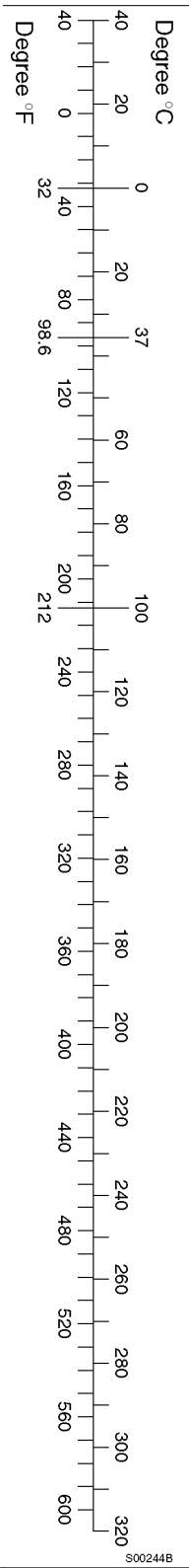
oz	28.3495	0.02835	0.000028	1	0.0625
lb	453.592	0.45359	0.000454	16	1
1 tonne (metric) = 1.1023 ton (US) = 0.9842 ton (UK)					

### Pressure

Unit	kgf/cm <sup>2</sup>	bar	Pa=N/m <sup>2</sup>	kPa	lbf / in <sup>2</sup>	lbf / ft <sup>2</sup>
kgf / cm <sup>2</sup>	1	0.98067	98066.5	98.0665	14.2233	2048.16
bar	1.01972	1	100000	100	14.5037	2088.6
Pa=N / m <sup>2</sup>	0.00001	0.001	1	0.001	0.00015	0.02086
kPa	0.01020	0.01	1000	1	0.14504	20.886
lbf / in <sup>2</sup>	0.07032	0.0689	6894.76	6.89476	1	144
lbf / ft <sup>2</sup>	0.00047	0.00047	47.88028	0.04788	0.00694	1
1 kgf / cm <sup>2</sup> = 735.56 Torr (mmHg) = 0.96784 atm						

### Approximate conversions

SI Unit	Conversion Factor	Non-SI Unit	Conversion Factor	SI Unit
<b>Torque</b>				
newton meter (N·m)	x 10.2	= kgf·cm	x 0.8664	= (lbf·in)
newton meter (N·m)	x 0.74	= lb·ft	x 1.36	= N·m
newton meter (N·m)	x 0.102	= kgf·m	x 7.22	= (lbf·ft)
<b>Pressure (Pa = N / m<sup>2</sup>)</b>				
kilopascal (kPa)	x 4.0	= in. H <sub>2</sub> O	x 0.249	= kPa
kilopascal (kPa)	x 0.30	= in. Hg	x 3.38	= kPa
kilopascal (kPa)	x 0.145	= psi	x 6.89	= kPa
(bar)	x 14.5	= psi	x 0.069	= (bar)
(kgf / cm <sup>2</sup> )	x 14.22	= psi	x 0.070	= (kgf / cm <sup>2</sup> )
(newton / mm <sup>2</sup> )	x 145.04	= psi	x 0.069	= (bar)
megapascal (MPa)	x 145	= psi	x 0.00689	= MPa
<b>Power (W = J / s)</b>				
kilowatt (kW)	x 1.36	= PS (cv)	x 0.736	= kW
kilowatt (kW)	x 1.34	= HP	x 0.746	= kW
kilowatt (kW)	x 0.948	= Btu / s	x 1.055	= kW
watt (W)	x 0.74	= ft·lb / s	x 1.36	= W
<b>Energy (J = N·m)</b>				
kilojoule (kJ)	x 0.948	= Btu	x 1.055	= kJ
joule (J)	x 0.239	= calorie	x 4.19	= J
<b>Velocity and Acceleration</b>				
meter per sec <sup>2</sup> (m / s <sup>2</sup> )	x 3.28	= ft / s <sup>2</sup>	x 0.305	= m / s <sup>2</sup>
meter per sec (m / s)	x 3.28	= ft / s	x 0.305	= m / s
kilometer per hour (km / h)	x 0.62	= mph	x 1.61	= km / h
<b>Horse power /torque</b>				
BHP x 5252 rpm = TQ (lb·ft)			TQ x rpm 5252 = B.H.P.	
<b>Temperature</b>				
°C = (°F - 32) / 1.8		°F = (°C x 1.8) + 32		
<b>Flow Rate</b>				
liter / min (dm <sup>3</sup> / min)	x 0.264	= US gal / min x 3.785	= liter / min	



Note : ( ) non-si unit

Document Title: <b>Specifications, general</b>	Function Group: <b>030</b>	Information Type: <b>Service Information</b>	Date: <b>8/4/2025</b>
Profile:			

## Specifications, general

### General specification

Item		Unit	EC210	EC240
Operating weight		kg	20500	23500
		lb	45190	51820
Ground contact		kgf / cm <sup>2</sup>	0.43	0.47
		psi	6.12	6.68
Slew speed	Steady	rpm	11.6	11.9
Travel speed	1 speed	km / h	3.2	3.2
		mph	1.98	1.98
	2 speed	km / h	5.5	5.5
		mph	3.41	3.41
Maximum digging force (Normal / Pressurized)		kg	12060 / 13190	14100 / 15420
		lb	26590	31080
Maximum tractive effort		ton	18.7	21.3
Gradeability		%	70	
		deg	35	

Document Title: <b>Specifications, general</b>	Function Group: <b>030</b>	Information Type: <b>Service Information</b>	Date: <b>8/4/2025</b>
Profile:			

## Specifications, general

### General specification

Item		Unit	EC210	EC240
Operating weight		kg	20500	23500
		lb	45190	51820
Ground contact		kgf / cm <sup>2</sup>	0.43	0.47
		psi	6.12	6.68
Slew speed	Steady	rpm	11.6	11.9
Travel speed	1 speed	km / h	3.2	3.2
		mph	1.98	1.98
	2 speed	km / h	5.5	5.5
		mph	3.41	3.41
Maximum digging force (Normal / Pressurized)		kg	12060 / 13190	14100 / 15420
		lb	26590	31080
Maximum tractive effort		ton	18.7	21.3
Gradeability		%	70	
		deg	35	

Document Title: <b>Specifications, general</b>	Function Group: <b>030</b>	Information Type: <b>Service Information</b>	Date: <b>8/4/2025</b>
Profile:			

## Specifications, general

### General specification



Item		Unit	EC210	EC240
Operating weight		kg	20500	23500
		lb	45190	51820
Ground contact		kgf / cm <sup>2</sup>	0.43	0.47
		psi	6.12	6.68
Slew speed	Steady	rpm	11.6	11.9
Travel speed	1 speed	km / h	3.2	3.2
		mph	1.98	1.98
	2 speed	km / h	5.5	5.5
		mph	3.41	3.41
Maximum digging force (Normal / Pressurized)		kg	12060 / 13190	14100 / 15420
		lb	26590	31080
Maximum tractive effort		ton	18.7	21.3
Gradeability		%	70	
		deg	35	

Document Title: <b>Standard tightening torque</b>	Function Group: <b>030</b>	Information Type: <b>Service Information</b>	Date: <b>8/4/2025</b>
Profile:			

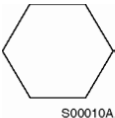
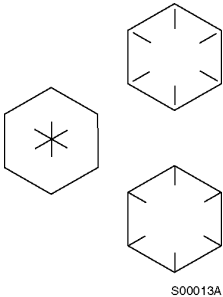
### Standard tightening torque

The following charts give the standard tightening torques of screws and nuts. Exceptions are given in each sections of "disassembly and assembly".

#### Tightening torque (meter)

Classification	4T, 5T	10T
Screw type		
Screw size	Torque kgf·m (lbf·ft)	Torque kgf·m (lbf·ft)
M4	0.2 ± 0.02 (1.4 ± 0.1)	0.4 ± 0.04 (2.9 ± 0.3)
M5	0.3 ± 0.03 (2.2 ± 0.2)	0.8 ± 0.08 (5.8 ± 0.6)
M6	0.5 ± 0.05 (3.6 ± 0.4)	1.4 ± 0.14 (10.1 ± 1.0)
M8	1.2 ± 0.12 (8.7 ± 0.9)	3.3 ± 0.3 (23.8 ± 2.2)
M10	2.3 ± 0.23 (16.6 ± 1.7)	6.5 ± 0.7 (47 ± 5)
M12	4.0 ± 0.4 (29 ± 3)	11.3 ± 1.1 (82 ± 8)
<M14>	6.4 ± 0.6 (46 ± 4)	17.9 ± 1.8 (129 ± 13)
M16	9.5 ± 0.9 (69 ± 6)	26.7 ± 2.7 (193 ± 19)
<M18>	13.5 ± 1.4 (97 ± 10)	38.0 ± 3.8 (274 ± 27)
M20	18.6 ± 1.9 (134 ± 14)	52.2 ± 5.2 (377 ± 38)
<M22>	24.7 ± 2.5 (178 ± 18)	69.4 ± 6.9 (500 ± 50)
M24	32.1 ± 3.2 (232 ± 23)	90.2 ± 9.0 (650 ± 65)
M30	62.6 ± 6.3 (452 ± 45)	176.1 ± 17.6 (1270 ± 127)
M36	108.2 ± 10.8 (781 ± 78)	304.3 ± 30.4 (2200 ± 220)
M42	171.8 ± 17.2 (1240 ± 124)	483.2 ± 48.3 (3500 ± 350)
M45	211.3 ± 21.1 (1525 ± 152)	594.3 ± 50.4 (4300 ± 430)

#### Tightening torque (inch)

Classification	4T, 5T	10T
Screw type		
Screw size	Torque kgf·m (lbf·ft)	Torque kgf·m (lbf·ft)
1/4	0.6 ± 0.06 (4.3 ± 0.4)	1.7 ± 0.2 (12.2 ± 1.2)
5/16	1.2 ± 0.12 (8.7 ± 0.8)	3.0 ± 0.3 (21.7 ± 2.2)
3/8	2.0 ± 0.20 (14.4 ± 1.4)	5.6 ± 0.5 (40 ± 4)
7/16	3.2 ± 0.32 (23 ± 2)	8.9 ± 0.9 (64 ± 6)
1/2	4.7 ± 0.47 (34 ± 3)	13.4 ± 1.3 (97 ± 10)
9/16	6.8 ± 0.68 (50 ± 5)	19.0 ± 1.9 (137 ± 14)
5/8	9.3 ± 0.93 (67 ± 7)	26.1 ± 2.6 (190 ± 19)
3/4	16.0 ± 1.60 (115 ± 15)	45.1 ± 4.5 (325 ± 33)
7/8	25.5 ± 2.55 (185 ± 19)	71.6 ± 7.2 (520 ± 52)

1	38.0 ± 3.80 (275 ± 27)	106.9 ± 10.7 (770 ± 77)
1-1/8	54.1 ± 5.41 (390 ± 39)	152.2 ± 15.2 (1100 ± 110)
1-1/4	74.2 ± 7.42 (535 ± 54)	208.9 ± 20.9 (1510 ± 151)
1-3/4	98.8 ± 9.88 (710 ± 71)	277.8 ± 27.8 (2000 ± 200)
1-1/2	128.2 ± 12.82 (925 ± 93)	360.7 ± 36.1 (2600 ± 260)

**NOTE!**

This torque table does not apply to screws with nylon packings or where nonferrous metal washers are to be used, or which require tightening to a different specified torque, or tightening procedure.

**NOTE!**

N·m (Newton meter) : 1 N·m ≅ 0.1 kgf·m

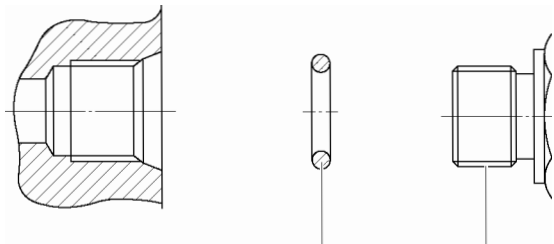
**Tightening torque of split flange screws**

Use these torques for split flange screws.

**Tightening torque (split flange screws)**

Thread diameter of screw (mm)	Width across flats (mm)	Tightening torque	
		kgf·m (lbf·ft)	N·m
10	14	6.7 ± 0.7 (48.4 ± 5)	65.7 ± 6.8
12	17	11.5 ± 1 (83 ± 8)	112 ± 9.8
16	22	28.5 ± 3 (206 ± 20)	279 ± 29

**Tightening torque for hydraulic plugs with o-ring**



**Figure 1**

Hydraulic plugs with o-ring

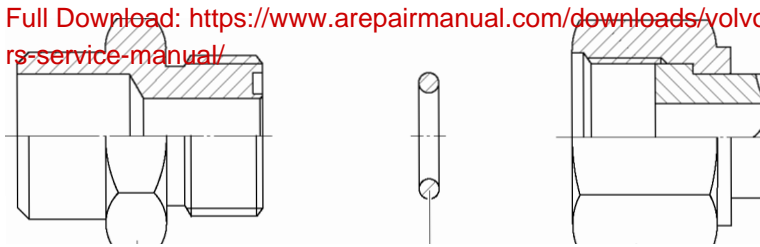
1. O-ring
2. Plug

**Pf thread**

**Tightening torque (hydraulic plugs)**

Thread	Plug part No.	Tightening torque kgf·m (lbf·ft)
1 / 8	9415-11012	2.5 ± 0.2 (18 ± 1.4)
1 / 4	9415-11022	5.0 ± 0.5 (36 ± 3.6)
3 / 8	9415-11032	7.5 ± 0.5 (54 ± 3.6)
1 / 2	9415-11042	11.0 ± 1.0 (79 ± 7)
3 / 4	9415-11052	18.0 ± 1.0 (130 ± 7)
1	9415-11062	21.0 ± 2.0 (152 ± 14)

**Tightening torque for swivel nut fitting with o-ring**



**Figure 2**

Swivel nut fitting with o-ring

1. Connector
2. O-ring
3. Swivel nut
4. Hose

**Tightening torque for swivel nut fitting**

Tube outer diameter (in)	Thread size (in)	Tightening torque, kgf·m (lbf·ft)
1/2	UN 13/16 – 16	9.5 ± 0.95 (69 ± 7)
3/4	UN 1 3/16 – 12	18 ± 1.8 (130 ± 13)
1	UN 1 7/16 – 12	21 ± 2.1 (152 ± 15)