

Product: Kubota WSM KC70 Dumper Service Repair Workshop Manual
Full Download: <https://www.arepairmanual.com/downloads/kubota-wsm-kc70-dumper-service-repair-workshop-manual/>

WSM

**WORKSHOP MANUAL
DUMPER**

KC70

Kubota

Sample of manual. Download All 26 pages at:
<https://www.arepairmanual.com/downloads/kubota-wsm-kc70-dumper-service-repair-workshop-manual/>

Product: Kubota WSM KC70 Dumper Service Repair Workshop Manual
Full Download: <https://www.arepairmanual.com/downloads/kubota-wsm-kc70-dumper-service-repair-workshop-manual/>

Sample of manual. Download All 26 pages at:
<https://www.arepairmanual.com/downloads/kubota-wsm-kc70-dumper-service-repair-workshop-manual/>

CONTENTS

MECHANISM

1. DIMENSIONS
2. TRANSMISSION
3. HYDRAULIC SYSTEM (DUMPING)
4. V-BELT
5. WIRING DIAGRAM

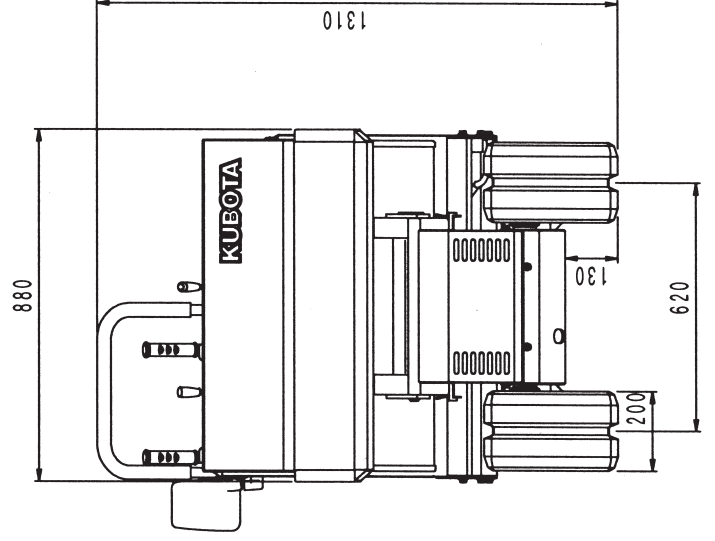
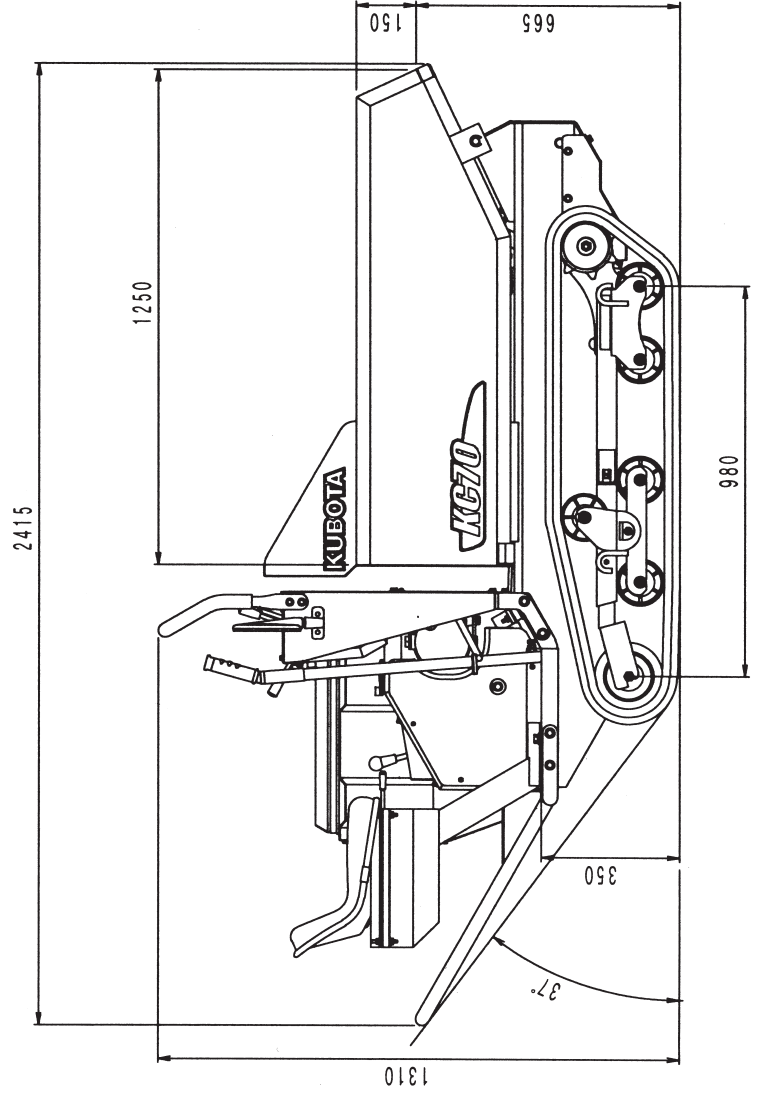
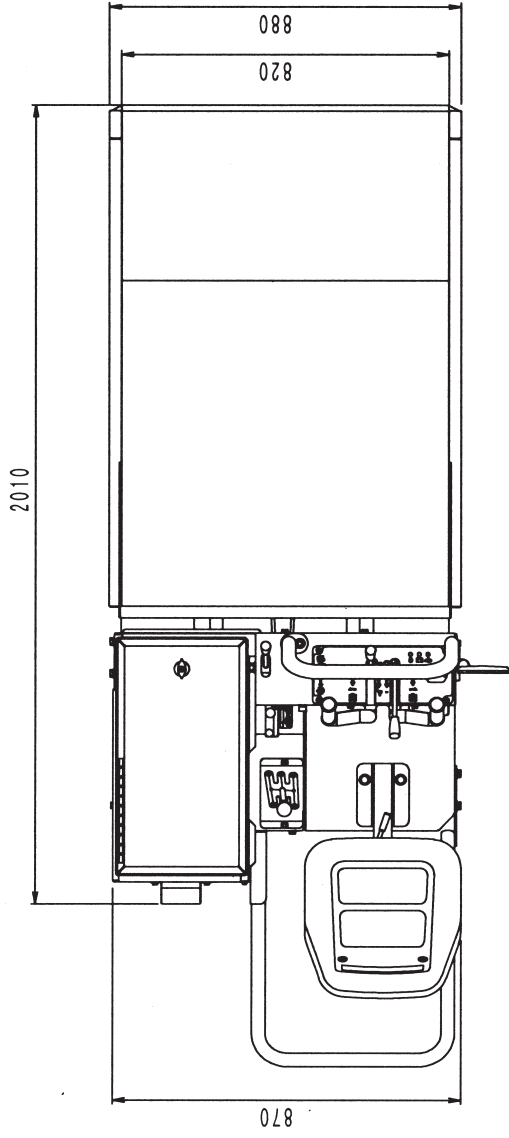
SERVICING

1. TIGHTENING TORQUE
2. OILS
3. CAUTION FOR DISASSEMBLY AND REASSEMBLY
4. ADJUSTMENT OF COMPONENT PARTS
5. REPLACEMENT OF WEAR OUT PARTS
6. TROUBLESHOOTING AND COUNTERMEASURES

MECHANISM

1. DIMENSIONS
2. TRANSMISSION
3. HYDRAULIC SYSTEM (DUMPING)
4. V-BELT
5. WIRING DIAGRAM

1. DIMENSIONS

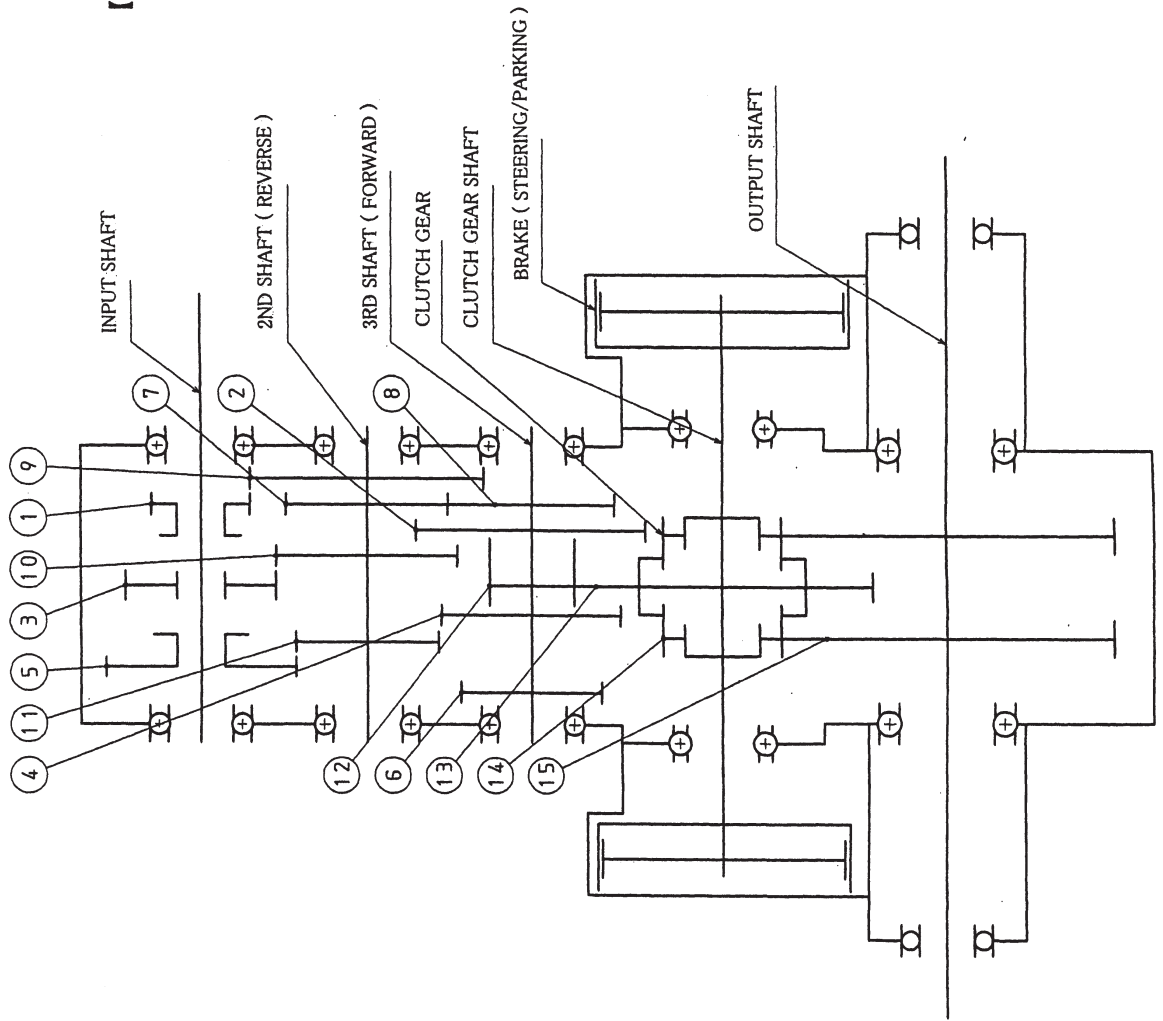


2. TRANSMISSION

【 NO OF TEETH 】

【 POWER TRAIN 】

REF NO	①	②	③	④	⑤	⑥	⑦	⑧
NO OF TEETH	15	36	23	28	29	22	25	26
REF NO	⑨	⑩	⑪	⑫	⑬	⑭	⑮	
NO OF TEETH	36	28	22	11	39	13	36	



【 GEARING 】

FORWARD

1ST = $\frac{1}{2} \times \frac{12}{13} \times \frac{14}{15}$

2ND = $\frac{3}{4} \times \frac{12}{13} \times \frac{14}{15}$

3RD = $\frac{5}{6} \times \frac{12}{13} \times \frac{14}{15}$

REVERSE

1ST = $\frac{1}{9} \times \frac{7}{8} \times \frac{12}{13} \times \frac{14}{15}$

2ND = $\frac{3}{10} \times \frac{7}{8} \times \frac{12}{13} \times \frac{14}{15}$

3RD = $\frac{5}{11} \times \frac{7}{8} \times \frac{12}{13} \times \frac{14}{15}$

【 GEAR RATIO 】

FORWARD

1ST = $\frac{15}{36} \times \frac{11}{39} \times \frac{13}{36} = \frac{1}{23.56}$

2ND = $\frac{23}{28} \times \frac{11}{39} \times \frac{13}{36} = \frac{1}{11.95}$

3RD = $\frac{29}{22} \times \frac{11}{39} \times \frac{13}{36} = \frac{1}{7.45}$

REVERSE

1ST = $\frac{15}{36} \times \frac{25}{26} \times \frac{11}{39} \times \frac{13}{36} = \frac{1}{24.50}$

2ND = $\frac{23}{28} \times \frac{25}{26} \times \frac{11}{39} \times \frac{13}{36} = \frac{1}{12.43}$

3RD = $\frac{29}{22} \times \frac{25}{26} \times \frac{11}{39} \times \frac{13}{36} = \frac{1}{7.75}$

3. HYDRAULIC SYSTEM (DUMPING)

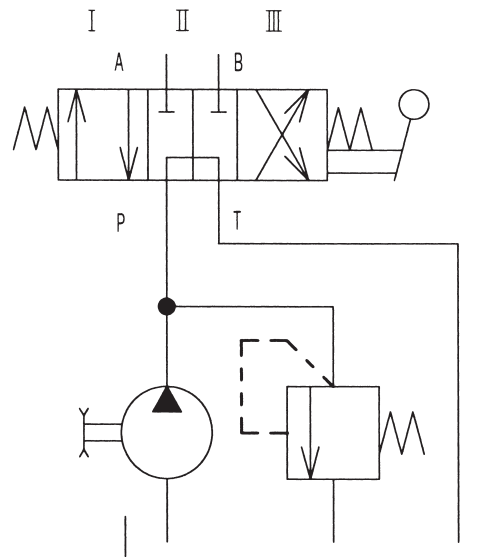
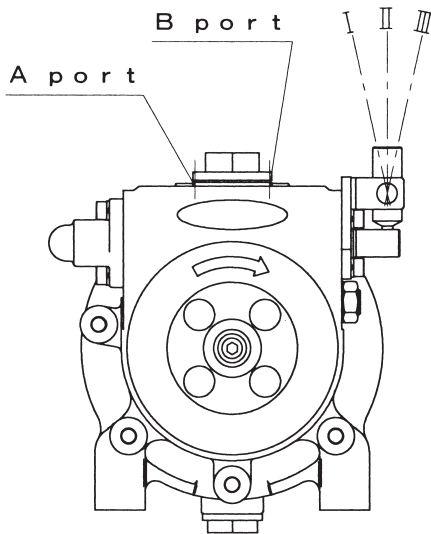
Hydraulic pump

Hydraulic pump	: K52R
	Parts no (89915-1256-0)
Discharge volume	: 5cc/rev
Revolution	: 500~2000rpm
Relief valve set pressure	: 95^{+5} kg/cm ² (9.3 ^{+0.5} MPA)
	(at 1800rpm)
Tank capacity	: 1.6L
Pulley size (pump)	: 3 ¹ / ₂ " x B1 (dia 88.9mm)
Pulley size (engine)	: (dia 95.0mm)

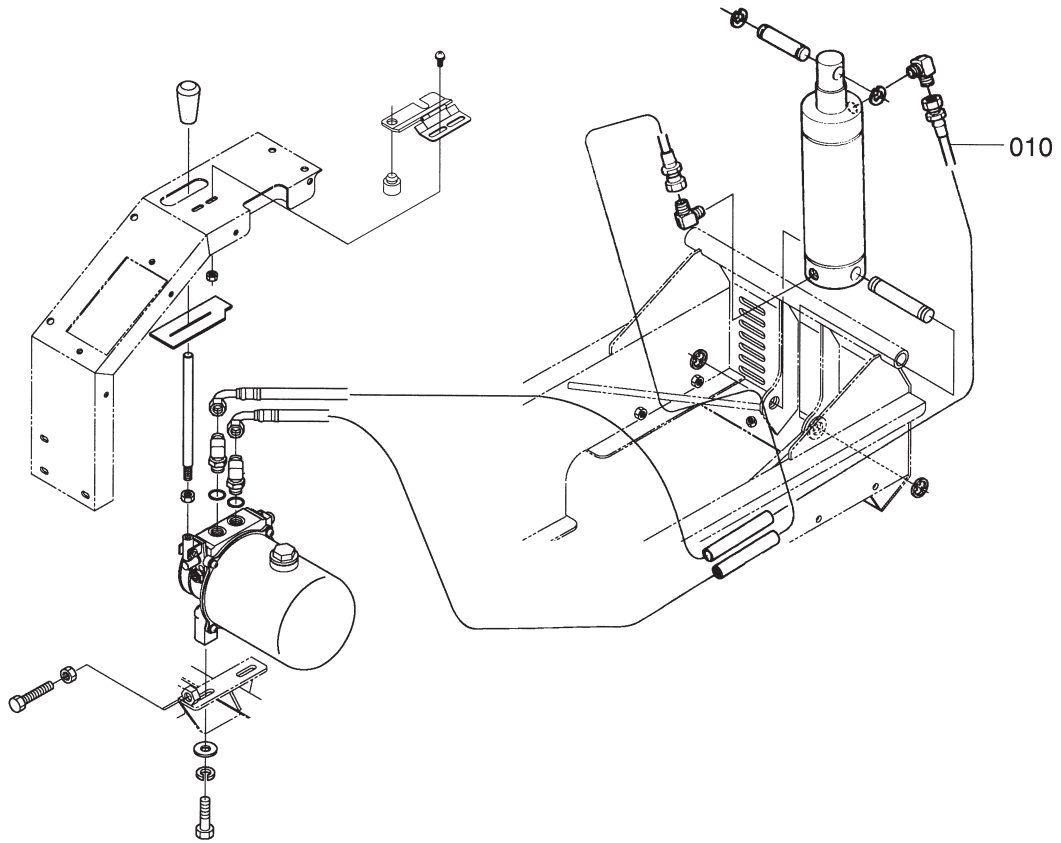
Flow of hydraulic oil

A : Pull-Down port

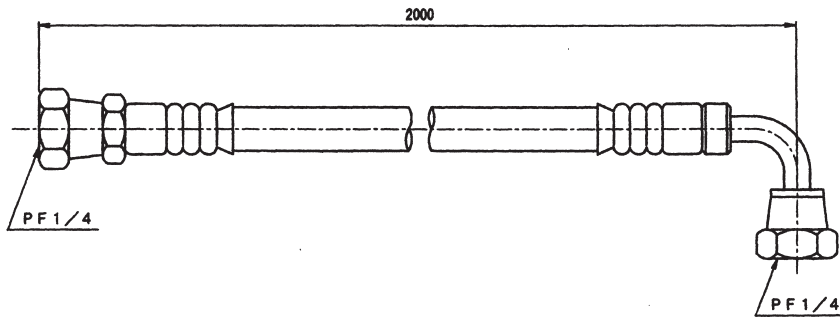
B : Push-up port



Hydraulic hose



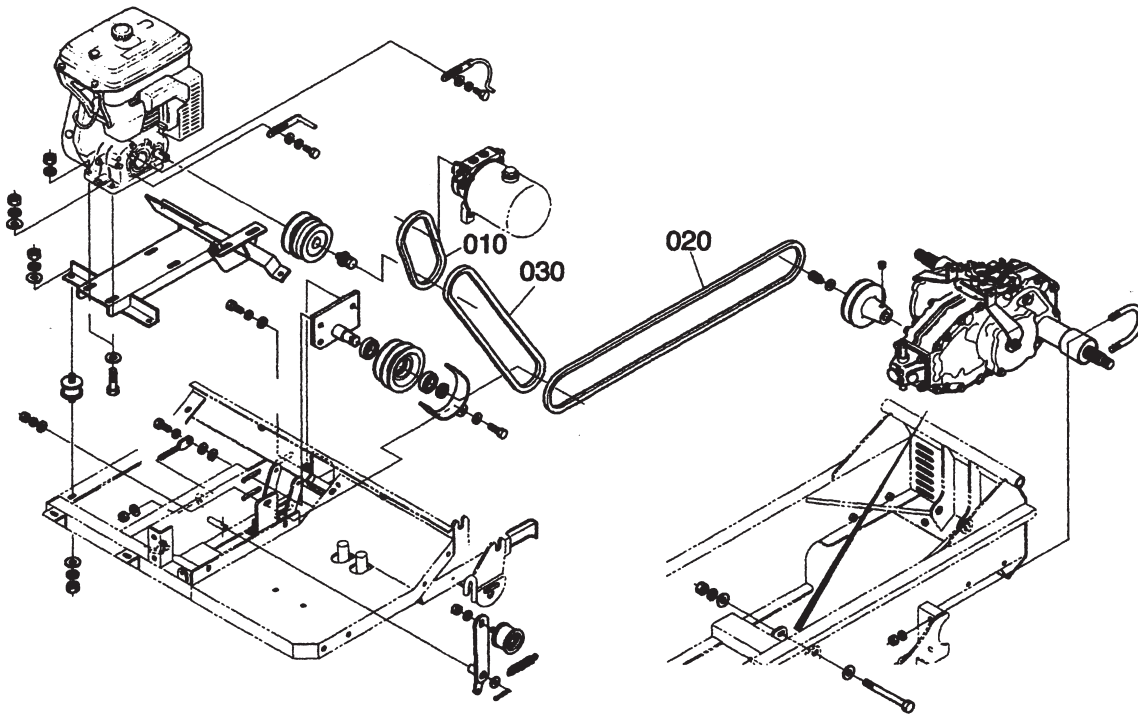
<u>Ref no</u>	<u>Parts no</u>	<u>Length</u>	<u>Joint</u>
010	89915-1167-0	2000mm	PF1/4



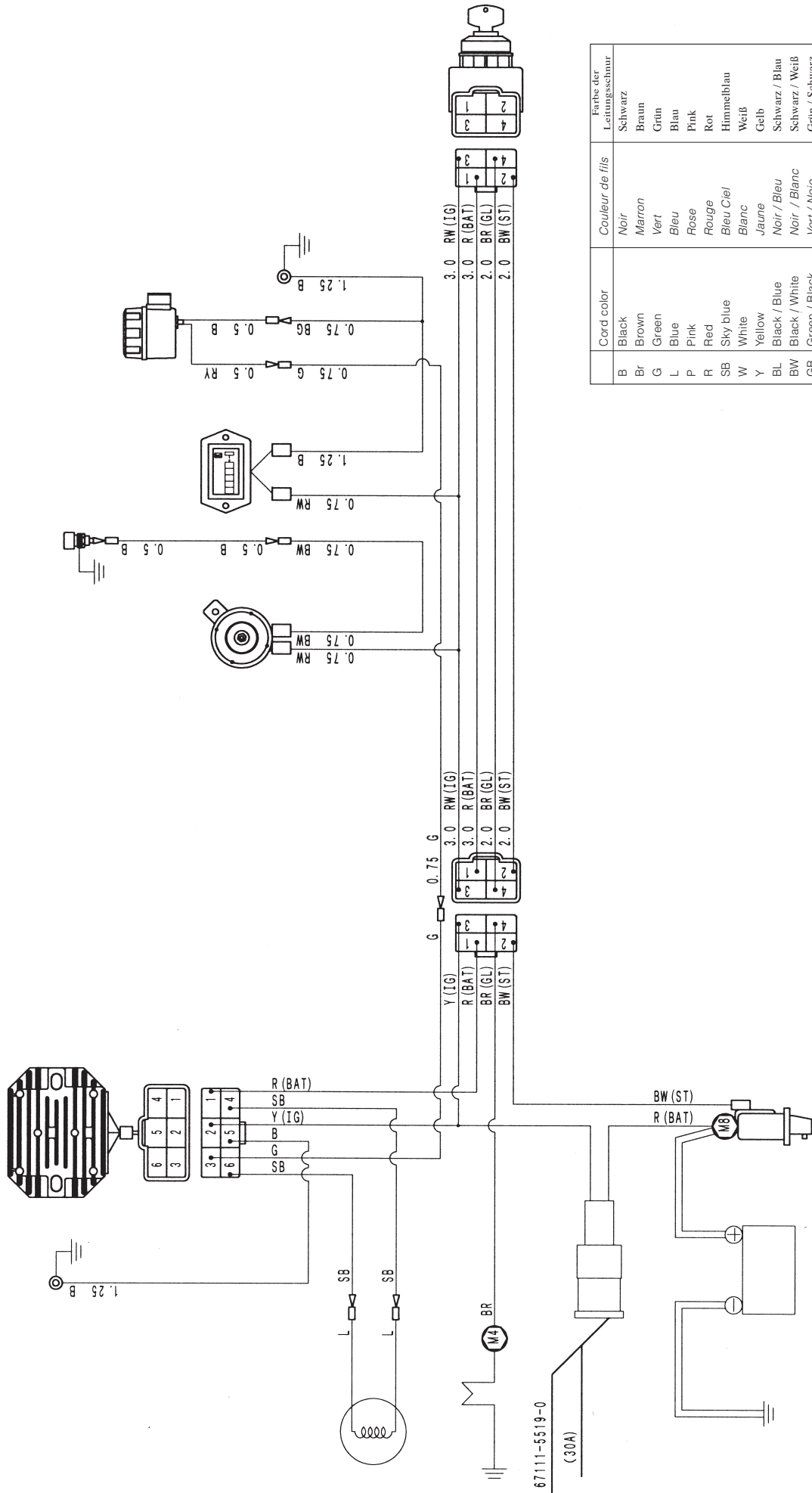
4. V-BELT

Size of V-belt

- 1) V-belt (Engine pulley ~ Drive pulley / Ref no 030)
Size: SC41 (Cog belt) x 1 pce / parts no 89915-1166-0.
- 2) V-belt (Engine pulley ~ Hydraulic pump pulley / Ref no 010)
Size: LB24 x 1 pce / parts no 89911-2116-0
- 3) V-belt (Drive pulley ~ Transmission pulley / Ref no 020)
Size: SC71 (Cog belt) x 1 pce / parts no 89915-1160-0.



5. WIRING DIAGRAM



Cord color	Couleur de fils	Farbe der Leitungsschnur
B	Noir	Schwarz
Br	Marron	Braun
G	Vert	Grün
L	Bleu	Blau
P	Rose	Rosa
R	Rouge	Rot
SB	Bleu Ciel	Himmelblau
W	Blanc	Weiß
Y	Jaune	Gelb
BL	Noir / Bleu	Schwarz / Blau
BW	Noir / Blanc	Schwarz / Weiß
GB	Vert / Noir	Grün / Schwarz
LB	Bleu / Noir	Blau / Schwarz
PB	Rose / Noir	Rosa / Schwarz
RW	Rouge / Blanc	Rot / Weiß
WB	Red / White	Weiß / Schwarz
YB	Jaune / Noir	Gelb / Schwarz
BR	Noir / Rouge	Schwarz / Rot

SERVICING

1. TIGHTENING TORQUE
2. OILS
3. CAUTION FOR DISASSEMBLY AND REASSEMBLY
4. ADJUSTMENT OF COMPONENT PARTS
5. REPLACEMENT OF WEAR OUT PARTS
6. TROUBLESHOOTING AND COUNTERMEASURES

1. TIGHTENING TORQUE

1) GENERAL BOLTS AND NUTS

Bolt torque
Couple pour les boulons
 Schraubendrehkrasft

Material Grade <i>Grade de matière</i> Materialgütegrad	Standard Bolt <i>Boulon standardisé</i> Standardschrauben	Special Bolt <i>Boulon spécial</i> Spezialschrauben	Special Bolt <i>Boulon spécial</i> Spezialschrauben
Nominal Dia. <i>Dia. nominal</i> Nom. Durchmesser	SS41, S20C	S43C, S487C (Refined) <i>S43C, S48C (Raffiné)</i> S43C, S48C (Nachbearbeitet)	SCR3, SCM3 (Refined) <i>SCR3, SCM3 (Reffiné)</i> SCR3, SCM3 (Nachbearbeitet)
M6	7.8 - 9.3 N.m 0.80 - 0.95 kgf-m 5.8 - 6.9 lb.ft.	9.8 - 11.3 N.m 1.00 - 1.15 kgf-m 7.2 - 8.3 lb.ft.	12.3 - 14.2 N.m 1.25 - 1.45 kgf-m 9.0 - 10.5 lb.ft.
M8	17.7 - 20.6 N.m 1.80 - 2.10 kgf-m 13.0 - 15.2 lb.ft.	23.5 - 27.5 N.m 2.40 - 2.80 kgf-m 17.4 - 20.3 lb.ft.	29.4 - 34.3 N.m 3.00 - 3.50 kgf-m 21.7 - 25.3 lb.ft.
M10	39.2 - 45.1 N.m 4.00 - 4.60 kgf-m 28.9 - 33.3 lb.ft.	48.0 - 55.9 N.m 4.90 - 5.70 kgf-m 35.4 - 41.2 lb.ft.	60.8 - 70.6 N.m 6.20 - 7.20 kgf-m 44.8 - 52.1 lb.ft.
M12	62.8 - 72.6 N.m 6.40 - 7.40 kgf-m 46.3 - 53.5 lb.ft.	77.5 - 90.2 N.m 7.90 - 9.20 kgf-m 57.1 - 66.5 lb.ft.	103.0 - 117.7 N.m 10.50 - 12.00 kgf-m 75.9 - 86.8 lb.ft.
M14	107.9 - 125.5 N.m 11.00 - 12.80 kgf-m 79.6 - 92.6 lb.ft.	123.6 - 147.1 N.m 12.60 - 15.00 kgf-m 91.1 - 108.5 lb.ft.	166.7 - 196.1 N.m 17.00 - 20.00 kgf-m 123.0 - 144.7 lb.ft.
M16	166.7 - 191.2 N.m 17.00 - 19.50 kgf-m 123.0 - 141.0 lb.ft.	196.1 - 225.5 N.m 20.00 - 23.00 kgf-m 144.7 - 166.4 lb.ft.	259.9 - 304.0 N.m 26.50 - 31.00 kgf-m 191.7 - 224.2 lb.ft.
M18	245.2 - 284.4 N.m 25.00 - 29.00 kgf-m 180.0 - 209.8 lb.ft.	274.6 - 318.7 N.m 28.00 - 32.50 kgf-m 202.5 - 235.1 lb.ft.	343.2 - 402.0 N.m 35.00 - 41.00 kgf-m 253.2 - 296.5 lb.ft.
M20	333.4 - 392.2 N.m 34.00 - 40.00 kgf-m 245.9 - 289.3 lb.ft.	367.7 - 431.5 N.m 37.50 - 44.00 kgf-m 271.2 - 318.2 lb.ft.	490.3 - 568.7 N.m 50.00 - 58.00 kgf-m 361.6 - 419.5 lb.ft.

Bolt material grades are shown by numbers punched on the bolt heads. Prior to tightening, be sure to check out the numbers as shown below.

Punched Number	Bolt Material Grade
None	Standard Bolts SS41, S20C
7	Standard Bolts SS43, S48C (Refined)
9	Special Bolts SCR3, SCM3 (Refined)

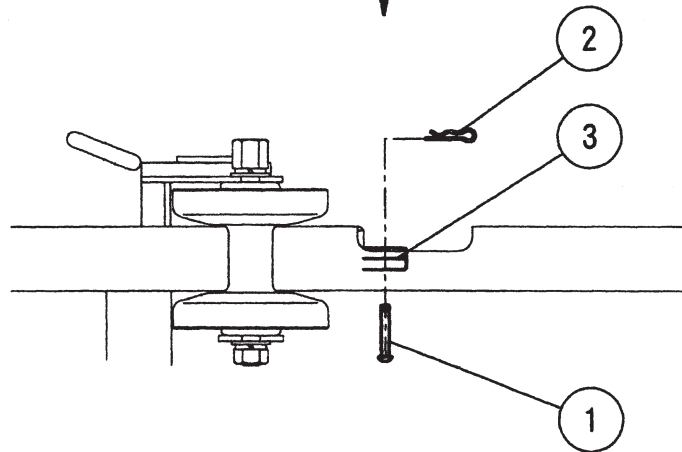
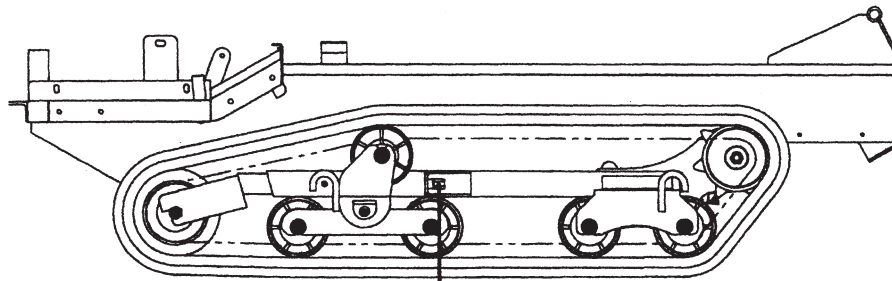
Grande de matière des boulons est indiqué par le numéro sur la tête de boulon. Pour le couple de serrage, vérifiez le numéro comme suivant.

Numéro marqué	Grade de matière des boulons
Nul	<i>Boulon standardisé</i> SS41, S20C
7	<i>Boulon spécial</i> S43C, S48C (Reffiné)
9	<i>Boulon spécial</i> SCR3, SCM3 (Reffiné)

Gütegrade der Schrauben sind durch Einstanzungen auf dem Schraubenkopf ersichtlich. Vor dem Anziehen der Schrauben, bitte die Nummern überprüfen, Wie nachstehend gezeigt.

Einges- tarzte	Gütegrad Schraubenmaterial
Keine	Standardschrauben SS41, S20C
7	Standardschrauben SS43, S48C (Nachbearbeitet)
9	Speziasschrauben SCR3, SCM3 (Nachbearbeitet)

2) Crawler adjusting bolt :150 kgf·cm



- ① Pin
- ② Snap pin
- ③ Crawler adjusting bolt

2. OILS

TRANSMISSION OIL

Type of oil	Quantity	Serial no
Gear Lubrication oil #90	1.9L	~ 00061
Automatic transmission fluid (ATF) [DEXRON]	1.9L	00062 ~

HYDRAULIC PUMP OIL

Type of oil	Viscosity		Quantity
Hydraulic oil	ISO46	Shell Tellus T46 or equivalent oil	1.5 - 1.6L

NOTE

Sample of manual. Download All 26 pages at:

<https://www.aresrepairmanual.com/downloads/kubota-wsm-kc70-dumper-service-repair-workshop-manual/>

Total capacity of hydraulic pump oil with new cylinder and hoses : Approx. 1.9L