

WSM

WORKSHOP MANUAL ROTARY MOWER

**RCK48-15BX • RCK48-22BX
RCK54-15BX • RCK54-22BX
RCK60B-22BX**

Kubota



TO THE READER

This Workshop Manual has been prepared to provide servicing personnel with information on the mechanism, service and maintenance of KUBOTA rotary mower RCK48-15BX, RCK48-22BX, RCK54-15BX, RCK54-22BX and RCK60B-22BX. It is divided into two parts, "Mechanism" and "Servicing" for each section.

■ Mechanism

Information on the construction and function are included. This part should be understood before proceeding with troubleshooting, disassembling and servicing.

■ Servicing

Under the heading "General" section comes general precautions, check and maintenance and special tools. Other section, there are troubleshooting, servicing specification lists, checking and adjusting, disassembling and assembling, and servicing which cover procedures, precautions, factory specifications and allowable limits.

All information illustrations and specifications contained in this manual are based on the latest product information available at the time of publication.

The right is reserved to make changes in all information at any time without notice.

November 2002

© KUBOTA Corporation 2002



SAFETY FIRST

This symbol, the industry's "Safety Alert Symbol", is used throughout this manual and on labels on the machine itself to warn of the possibility of personal injury. Read these instructions carefully.

It is essential that you read the instructions and safety regulations before you attempt to repair or use this unit.



DANGER

: Indicates an imminently hazardous situation which, if not avoided, will result in death or serious injury.



WARNING

: Indicates a potentially hazardous situation which, if not avoided, could result in death or serious injury.



CAUTION

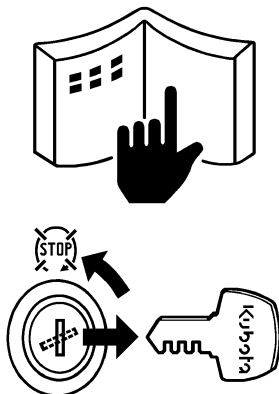
: Indicates a potentially hazardous situation which, if not avoided, may result in minor or moderate injury.

■ IMPORTANT

: Indicates that equipment or property damage could result if instructions are not followed.

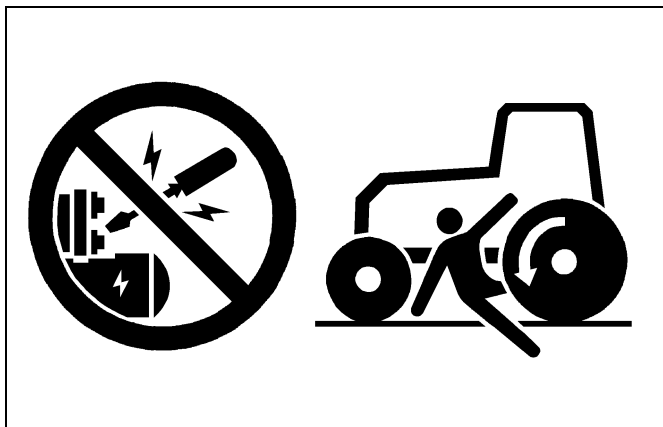
■ NOTE

: Gives helpful information.



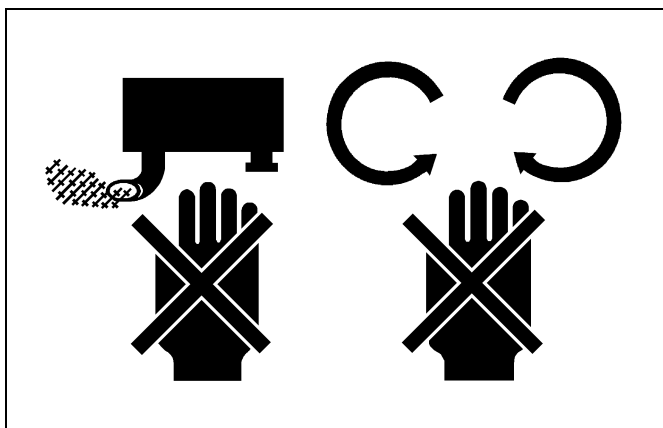
BEFORE SERVICING AND REPAIRING

- Read all instructions and safety instructions in this manual and on your machine safety decals.
- Clean the work area and machine.
- Park the machine on a firm and level ground, and set the parking brake.
- Lower the implement to the ground.
- Stop the engine, and remove the key.
- Disconnect the battery negative cable.
- Hang a "**DO NOT OPERATE**" tag in operator station.



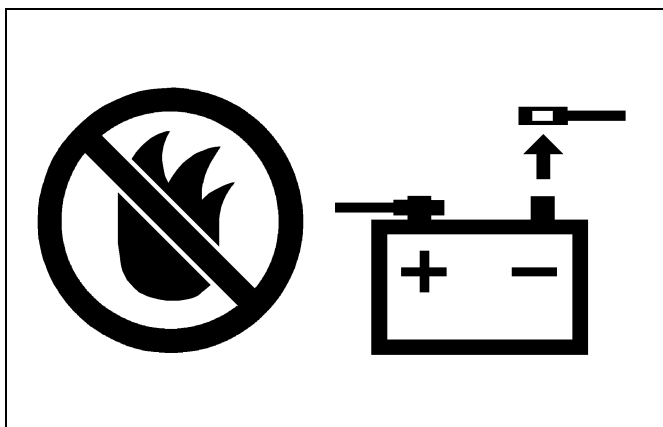
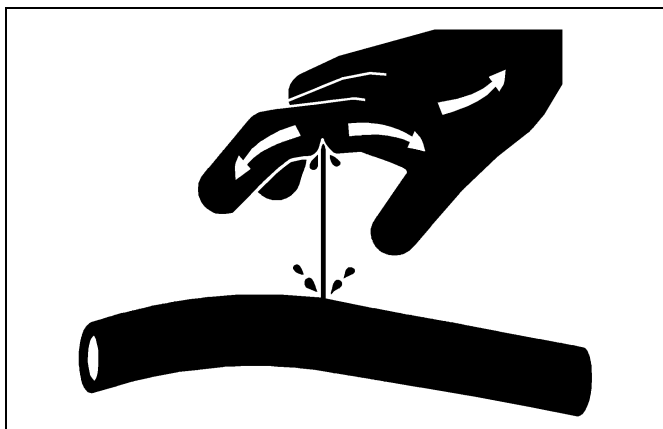
SAFETY STARTING

- Do not start the engine by shorting across starter terminals or bypassing the safety start switch.
- Do not alter or remove any part of machine safety system.
- Before starting the engine, make sure that all shift levers are in neutral positions or in disengaged positions.
- Never start the engine while standing on ground. Start the engine only from operator's seat.



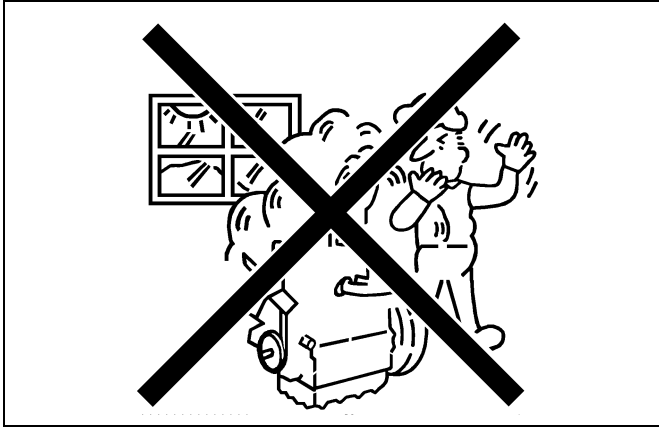
SAFETY WORKING

- Do not work on the machine while under the influence of alcohol, medication, or other substances or while fatigued.
- Wear close fitting clothing and safety equipment appropriate to the job.
- Use tools appropriate to the work. Makeshift tools, parts, and procedures are not recommended.
- When servicing is performed together by two or more persons, take care to perform all work safely.
- Do not work under the machine that is supported solely by a jack. Always support the machine by safety stands.
- Do not touch the rotating or hot parts while the engine is running.
- Never remove the radiator cap while the engine is running, or immediately after stopping. Otherwise, hot water will spout out from radiator. Only remove radiator cap when cool enough to touch with bare hands. Slowly loosen the cap to first stop to relieve pressure before removing completely.
- Escaping fluid (fuel or hydraulic oil) under pressure can penetrate the skin causing serious injury. Relieve pressure before disconnecting hydraulic or fuel lines. Tighten all connections before applying pressure.

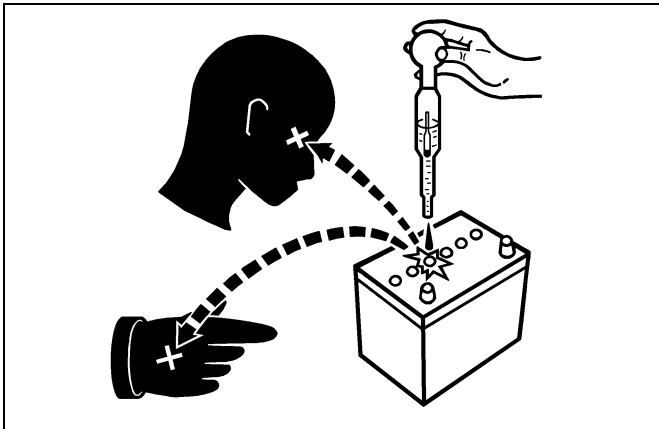


AVOID FIRES

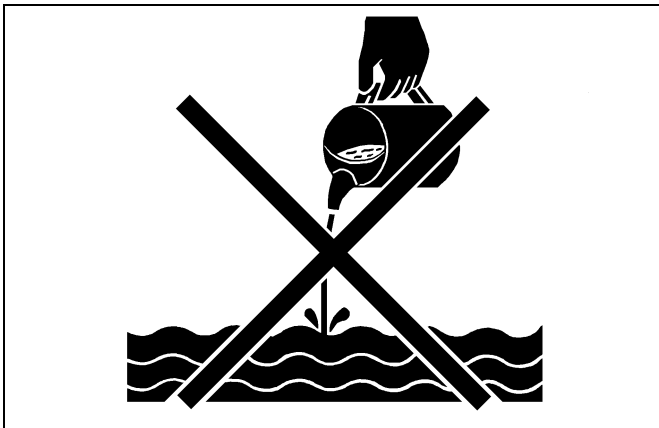
- Fuel is extremely flammable and explosive under certain conditions. Do not smoke or allow flames or sparks in your working area.
- To avoid sparks from an accidental short circuit, always disconnect the battery negative cable first and connect it last.
- Battery gas can explode. Keep sparks and open flame away from the top of battery, especially when charging the battery.
- Make sure that no fuel has been spilled on the engine.

**VENTILATE WORK AREA**

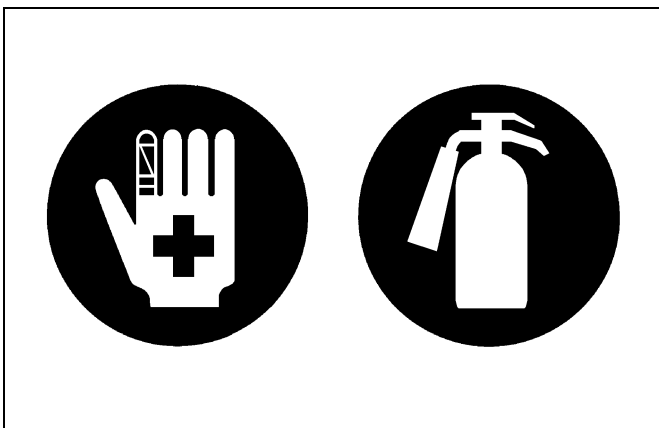
- If the engine must be running to do some work, make sure the area is well ventilated. Never run the engine in a closed area. The exhaust gas contains poisonous carbon monoxide.

**PREVENT ACID BURNS**

- Sulfuric acid in battery electrolyte is poisonous. It is strong enough to burn skin, clothing and cause blindness if splashed into eyes. Keep electrolyte away from eyes, hands and clothing. If you spill electrolyte on yourself, flush with water, and get medical attention immediately.

**DISPOSE OF FLUIDS PROPERLY**

- Do not pour fluids into the ground, down a drain, or into a stream, pond, or lake. Observe relevant environmental protection regulations when disposing of oil, fuel, coolant, electrolyte and other harmful waste.

**PREPARE FOR EMERGENCIES**

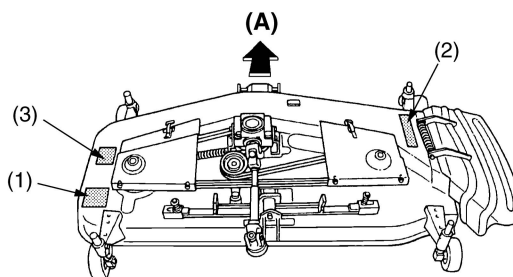
- Keep a first aid kit and fire extinguisher handy at all times.
- Keep emergency numbers for doctors, ambulance service, hospital and fire department near your telephone.

SAFETY DECALS

The following safety decals are installed on the mower.

If a decal becomes damaged, illegible or is not on the mower, replace it. The decal part number is listed in the parts list.

(1) Part No. K5763-4715-1



(A) Forward

(2) Part No. K5112-7311-1



(3) Part No. K5112-7312-1



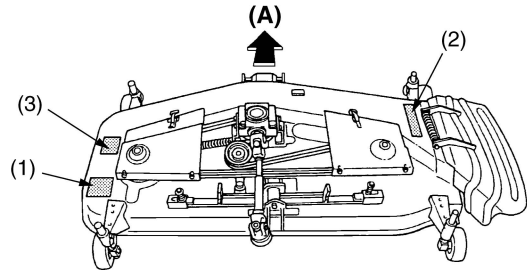
CARE OF DANGER, WARNING AND CAUTION LABELS

1. Keep danger, warning and caution labels clean and free from obstructing material.
2. Clean danger, warning and caution labels with soap and water, dry with a soft cloth.
3. Replace damaged or missing danger, warning and caution labels with new labels from your local KUBOTA dealer.
4. If a component with danger, warning or caution label (s) affixed is replaced with new part, make sure new label (s) is (are) attached in the same locations (s) as the replaced component.
5. Mount new danger, warning and caution labels by applying on a clean dry surface and pressing any bubbles to outside edge.

(1) Part No. K5371-1147-1

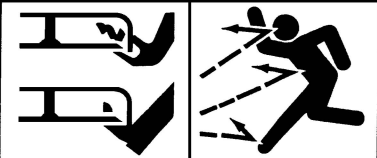
! ATTENTION

1. S'assurer que toutes les protections sont en place.
2. Avant de quitter le siège, stopper les lames de la tondeuse et le moteur.
3. Ne pas approcher les mains, les pieds et les vêtements de toutes les pièces en rotation.
4. Dégager l'air de travail d'animaux et objets étrangers.
5. Stopper les lames lorsque l'on roule sur des gravillons, les trottoirs et la route.



(A) Forward

(3) Part No. K5371-1148-1

! DANGER

Ne jamais mettre les pieds ou les mains en dessous de la tondeuse quand le moteur tourne.

(2) Part No. K5371-1142-1

**! DANGER**

1. Rester toujours à l'écart de la bouche d'éjection.
2. Ne jamais mettre les pieds ou les mains en dessous de la tondeuse quand le moteur tourne.
3. Ne jamais opérer la tondeuse sans le garde d'éjection.

**ENTRETIEN DES ÉTIQUETTES DE DANGER, D'AVERTISSEMENT ET D'ATTENTION**

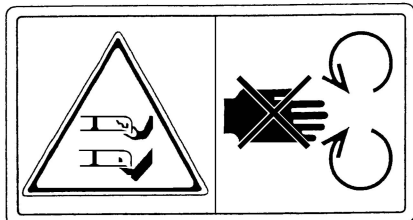
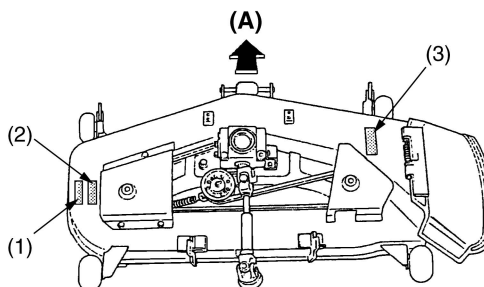
1. Les nettoyer régulièrement et enlever tout objet en obstruant la vue.
2. Les laver à l'eau et au savon. Les essuyer avec un chiffon doux.
3. Remplacer toute étiquette abîmée ou manquante. Consulter le concessionnaire KUBOTA local.
4. En remplaçant un élément sur lequel était apposée une étiquette de sécurité, s'assurer de remettre une nouvelle étiquette au même emplacement.
5. Coller les étiquettes sur une surface lisse, propre et sèche en appuyant légèrement pour chasser les bulles d'air.

CARE OF DANGER, WARNING AND CAUTION LABELS

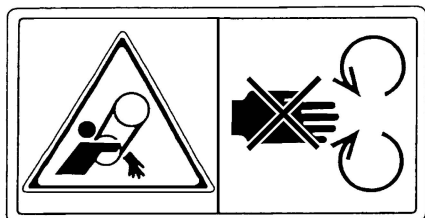
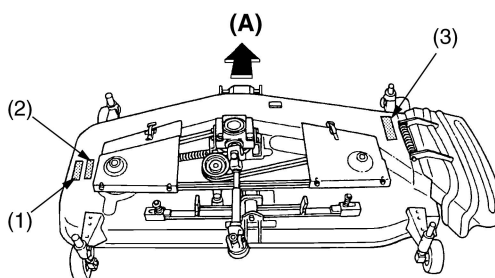
1. Keep danger, warning and caution labels clean and free from obstructing material.
2. Clean danger, warning and caution labels with soap and water, dry with a soft cloth.
3. Replace damaged or missing danger, warning and caution labels with new labels from your local KUBOTA dealer.
4. If a component with danger, warning or caution label (s) affixed is replaced with new part, make sure new label (s) is (are) attached in the same location (s) as the replaced component.
5. Mount new danger, warning and caution labels by applying on a clean dry surface and pressing any bubbles to outside edge.

[RCK48-15BX-EC · RCK48-22BX-EC · RCK54-15BX-EC · RCK54-22BX-EC · RCK60B-22BX-EC]

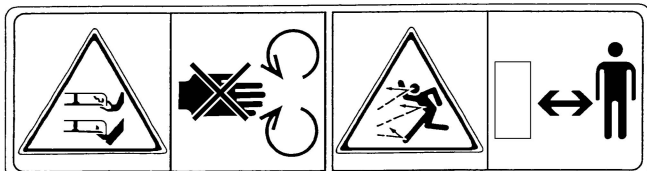
(1) Part No. K5652-4179-2

**[RCK48-15BX-EC · RCK48-22BX-EC
RCK54-15BX-EC · RCK54-22BX-EC]**

(2) Part No. K5652-4180-2

**[RCK60B-22BX-EC]**

(3) Part No. K5652-4178-2



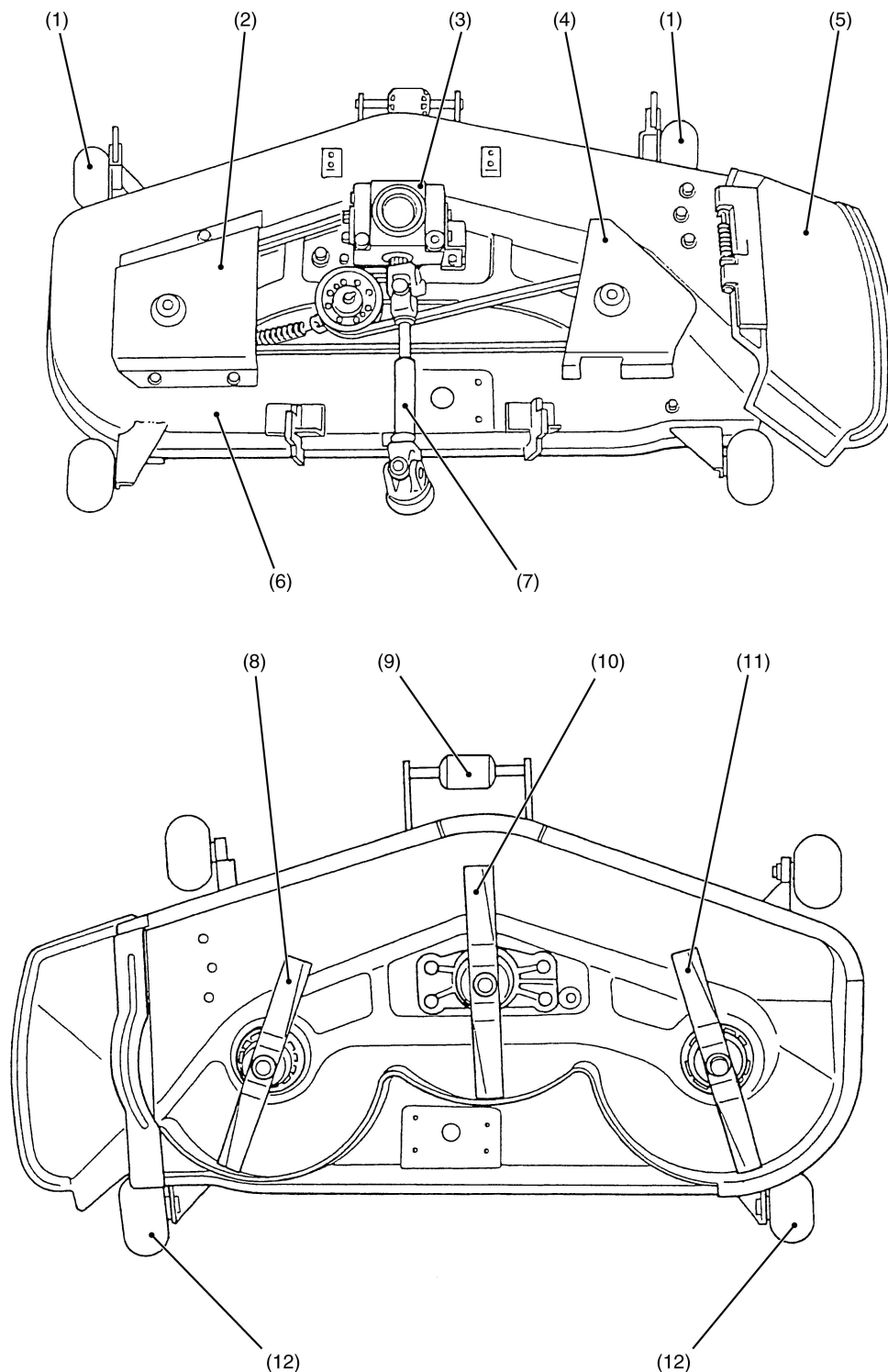
(A) Forward

CARE OF DANGER, WARNING AND CAUTION LABELS

1. Keep danger, warning and caution labels clean and free from obstructing material.
2. Clean danger, warning and caution labels with soap and water, dry with a soft cloth.
3. Replace damaged or missing danger, warning and caution labels with new labels from your local KUBOTA dealer.
4. If a component with danger, warning or caution label (s) affixed is replaced with new part, make sure new label (s) is (are) attached in the same location (s) as the replaced component.
5. Mount new danger, warning and caution labels by applying on a clean dry surface and pressing any bubbles to outside edge.

TERMINOLOGY

[RCK48-15BX · RCK48-22BX · RCK54-15BX · RCK54-22BX]



3GMAACFP001A

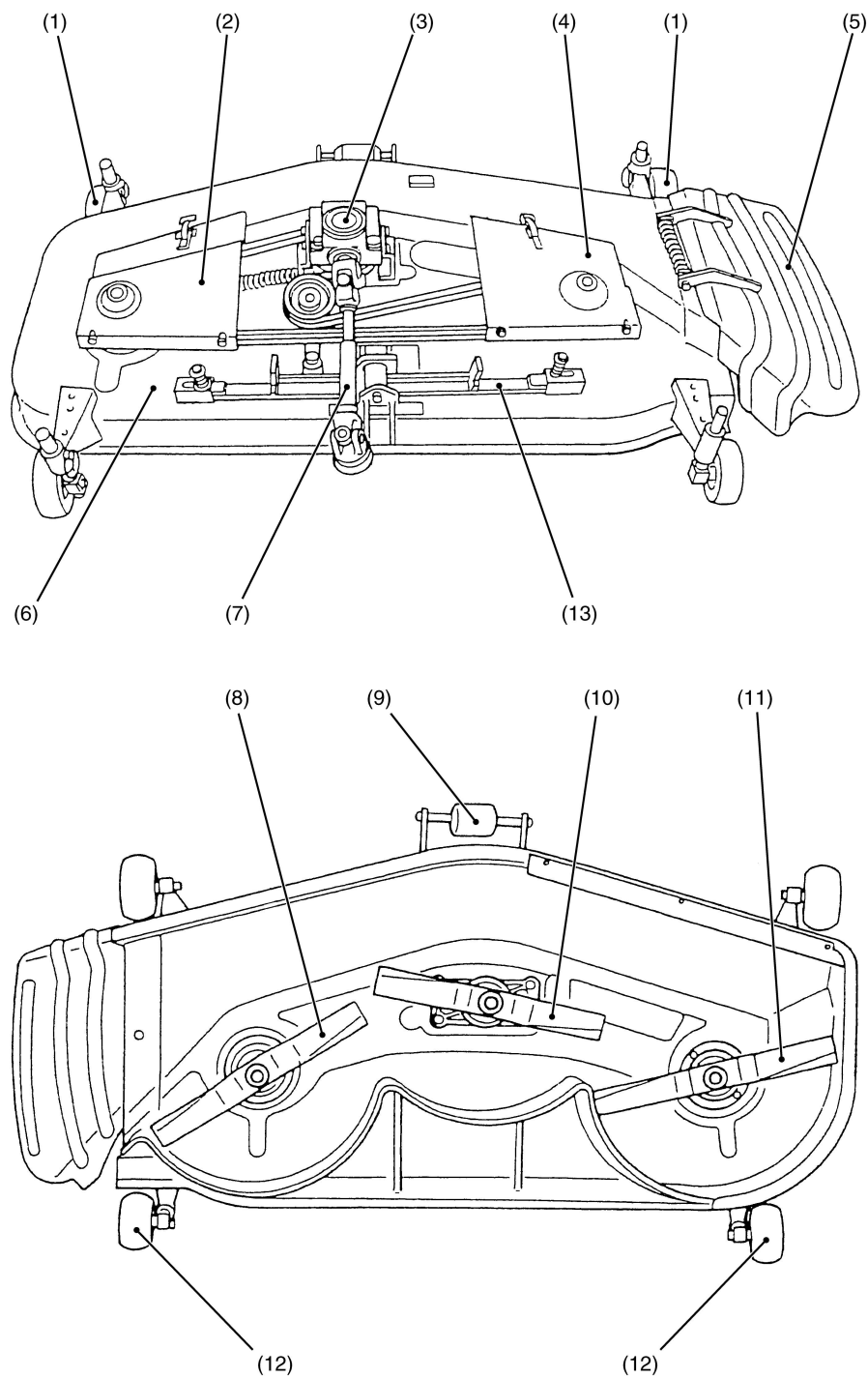
(1) Front Anti-scalp Roller
(2) Belt Cover (Left)
(3) Gear Box

(4) Belt Cover (Right)
(5) Discharge Chute
(6) Deck

(7) Universal Joint
(8) Outer Blade (Right)
(9) Center Anti-scalp Roller

(10) Center Blade
(11) Outer Blade (Left)
(12) Rear Anti-scalp Roller

[RCK60B-22BX]



3GMAACFP002A

- | | | | |
|-----------------------------|-------------------------|------------------------------|-----------------------------|
| (1) Front Anti-scalp Roller | (5) Discharge Chute | (9) Center Anti-scalp Roller | (12) Rear Anti-scalp Roller |
| (2) Belt Cover (Left) | (6) Deck | (10) Center Blade | (13) Self-Balancer |
| (3) Gear Box | (7) Universal Joint | (11) Outer Blade (Left) | (RCK60B-22BX Only) |
| (4) Belt Cover (Right) | (8) Outer Blade (Right) | | |

SPECIFICATIONS

Model		RCK48-15BX	RCK54-15BX	RCK48-22BX	RCK54-22BX	RCK60B-22BX
Suitable tractor		BX1500		BX1800, BX2200, BX22		
Mounting method		Quick-Joint, Parallel linkage				Self-balance suspended linkage
		Suspended linkage				
Adjustment of cutting height		Dial gauge				
Cutting width		1219 mm (48 in.)	1372 mm (54 in.)	1219 mm (48 in.)	1372 mm (54 in.)	1524 mm (60 in.)
Cutting height		25 to 102 mm (1.0 to 4.0 in.)				
Weight (Approx.)		75 kg (165 lbs)	95 kg (210 lbs)	75 kg (165 lbs)	95 kg (210 lbs)	115 kg (250 lbs)
Blade spindle speed		54.7 S ⁻¹ (3281 rpm)	49.5 S ⁻¹ (2969 rpm)	54.7 S ⁻¹ (3281 rpm)	49.5 S ⁻¹ (2969 rpm)	44.1 S ⁻¹ (2647 rpm)
Blade tip velocity		72.8 m/s (14331 fpm)	73.8 m/s (14527 fpm)	72.8 m/s (14331 fpm)	73.8 m/s (14527 fpm)	72.5 m/s (14271 fpm)
Blade length		424 mm (16.7 in.)			475 mm (18.7 in.)	523 mm (20.6 in.)
Number of blades		3				
Dimensions	Overall length	895 mm (35.2 in.)	928 mm (36.5 in.)	895 mm (35.2 in.)	928 mm (36.5 in.)	1000 mm (39.4 in.)
	Overall width	1544 mm (60.8 in.)	1690 mm (66.5 in.)	1544 mm (60.8 in.)	1690 mm (66.5 in.)	1843 mm (72.6 in.)
	Overall height (Min.)	239 mm (9.4 in.)	245 mm (9.6 in.)	239 mm (9.4 in.)	245 mm (9.6 in.)	

W1028770

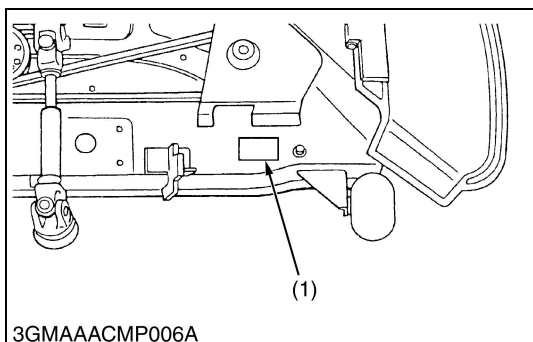
G GENERAL

GENERAL

CONTENTS

1. MOWER IDENTIFICATION.....	G-1
2. GENERAL PRECAUTION	G-2
3. LUBRICANTS	G-3
4. TIGHTENING TORQUES (GENERAL USE SCREWS, BOLTS AND NUTS)	G-4
5. MAINTENANCE CHECK LIST.....	G-5
6. CHECK AND MAINTENANCE.....	G-6
[1] CHECK POINTS OF DAILY OR EACH USE.....	G-6
[2] CHECK POINT OF INITIAL 50 HOURS	G-8
[3] CHECK POINT OF EVERY 150 HOURS	G-8
[4] CHECK POINT OF EVERY 2 YEARS	G-8
7. SETTING UP MOWER	G-9
8. MOWER ADJUSTMENT.....	G-11

1. MOWER IDENTIFICATION

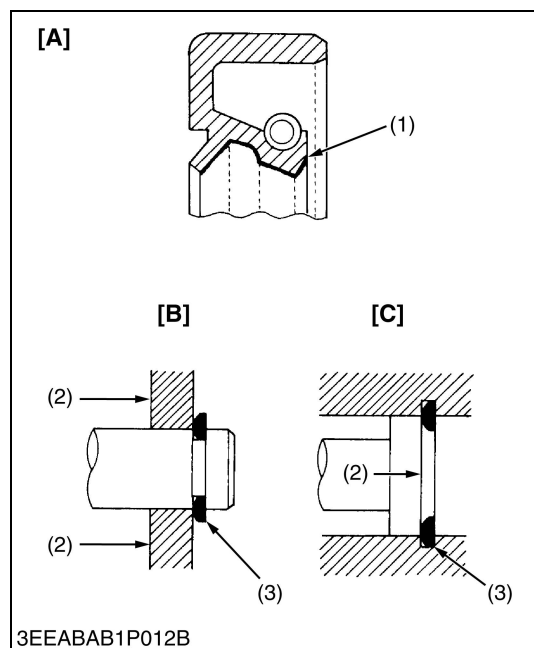


When contacting your local KUBOTA distributor, always specify mower serial number.

(1) Mower Serial Number

W1020623

2. GENERAL PRECAUTION



- During disassembly, carefully arrange removed parts in a clean area to prevent confusion later. Screws, bolts and nuts should be installed in their original position to prevent reassembly errors.
- When special tools are required, use KUBOTA genuine special tools. Special tools which are not frequently used should be made according to the drawings provided.
- Use KUBOTA genuine parts or KUBOTA-recommended parts and lubricants or their equivalents.
- Gaskets and O-rings must be replaced during reassembly.
- Apply grease to new O-rings or oil seals before assembling. See the figure.
- When reassembling external snap rings or internal snap rings, they must be positioned so that sharp edge faces against the direction from which a force is applied. See the figure.
- Metric screws, bolts and nuts are not interchangeable with nonmetric fasteners.
- Remove oil and dirt from parts before measuring.

(1) Grease
(2) Force
(3) Sharp Edge

(A) Oil Seal
(B) External Snap Ring
(C) Internal Snap Ring



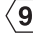
W1020761

3. LUBRICANTS

No.	Place	Capacity	Lubricants
1	Gear Box	0.36 L 0.38 U.S.qts. 0.32 Imp.qts.	SAE 90 gear oil (API Service GL-5 gear oil)
Greasing			
2	Universal joint	Until grease overflows	SAE multi-purpose type grease
3	Spindle shafts (Bevel gear shaft and blade shafts)		
4	Belt tension pulley		
5	Belt tension pivot		
6	Balance shaft (RCK60B-22BX only)		



4. TIGHTENING TORQUES (GENERAL USE SCREWS, BOLTS AND NUTS)

Screws, bolts and nuts whose tightening torques are not specified in this Workshop Manual should be tightened according to the table below.

Indication on top of bolt	 No-grade or 4T						 7T						 9T		
Material of bolt	SS400, S20C						S43C, S48C						SCr435, SCM435		
Material of opponent part	Ordinariness			Aluminum			Ordinariness			Aluminum			Ordinariness		
Unit Diameter	N·m	kgf·m	ft-lbs	N·m	kgf·m	ft-lbs	N·m	kgf·m	ft-lbs	N·m	kgf·m	ft-lbs	N·m	kgf·m	ft-lbs
M6 (6 mm, 0.24 in.)	7.85 to 9.31	0.80 to 0.95	5.79 to 6.87	7.85 to 8.82	0.80 to 0.90	5.79 to 6.50	9.81 to 11.2	1.00 to 1.15	7.24 to 8.31	7.85 to 8.82	0.80 to 0.90	5.79 to 6.50	12.3 to 14.2	1.25 to 1.45	9.05 to 10.4
M8 (8 mm, 0.31 in.)	17.7 to 20.5	1.8 to 2.1	13.1 to 15.1	16.7 to 19.6	1.7 to 2.0	12.3 to 14.4	23.6 to 27.4	2.4 to 2.8	17.4 to 20.2	17.7 to 20.5	1.8 to 2.1	13.1 to 15.1	29.5 to 34.3	3.0 to 3.5	21.7 to 25.3
M10 (10 mm, 0.39 in.)	39.3 to 45.1	4.0 to 4.6	29.0 to 33.2	31.4 to 34.3	3.2 to 3.5	23.2 to 25.3	48.1 to 55.8	4.9 to 5.7	35.5 to 41.2	39.3 to 44.1	4.0 to 4.5	29.0 to 32.5	60.9 to 70.6	6.2 to 7.2	44.9 to 52.0
M12 (12 mm, 0.47 in.)	62.8 to 72.5	6.4 to 7.4	46.3 to 53.5	—	—	—	77.5 to 90.2	7.9 to 9.2	57.2 to 66.5	62.8 to 72.5	6.4 to 7.4	46.3 to 53.5	103 to 117	10.5 to 12.0	76.0 to 86.7
M14 (14 mm, 0.55 in.)	108 to 125	11.0 to 12.8	79.6 to 92.5	—	—	—	124 to 147	12.6 to 15.0	91.2 to 108	—	—	—	167 to 196	17.0 to 20.0	123 to 144
M16 (16 mm, 0.63 in.)	167 to 191	17.0 to 19.5	123 to 141	—	—	—	197 to 225	20.0 to 23.0	145 to 166	—	—	—	260 to 304	26.5 to 31.0	192 to 224
M18 (18 mm, 0.71 in.)	246 to 284	25.0 to 29.0	181 to 209	—	—	—	275 to 318	28.0 to 32.5	203 to 235	—	—	—	344 to 402	35.0 to 41.0	254 to 296
M20 (20 mm, 0.79 in.)	334 to 392	34.0 to 40.0	246 to 289	—	—	—	368 to 431	37.5 to 44.0	272 to 318	—	—	—	491 to 568	50.0 to 58.0	362 to 419

W1034542

American standard cap screw with UNC or UNF threads.

Grade Unit Nominal Diameter	SAE GR.5 			SAE GR.8 		
	N·m	kgf·m	ft-lbs	N·m	kgf·m	ft-lbs
5/16	23.1 to 27.8	2.35 to 2.84	17.0 to 20.5	32.5 to 39.3	3.31 to 4.01	24.0 to 29.0
3/8	47.5 to 57.0	4.84 to 5.82	35.0 to 42.0	61.0 to 73.2	6.22 to 7.47	45.0 to 54.0
1/2	108.5 to 130.2	11.07 to 13.29	80.0 to 96.0	149.2 to 179.0	15.22 to 18.27	110.0 to 132.0
9/16	149.2 to 179.0	15.22 to 18.27	110.0 to 132.0	217.0 to 260.4	22.14 to 26.57	160.0 to 192.0
5/8	203.4 to 244.1	20.75 to 24.91	150.0 to 180.0	298.3 to 358.0	30.44 to 36.53	220.0 to 264.0

W1022485

5. MAINTENANCE CHECK LIST

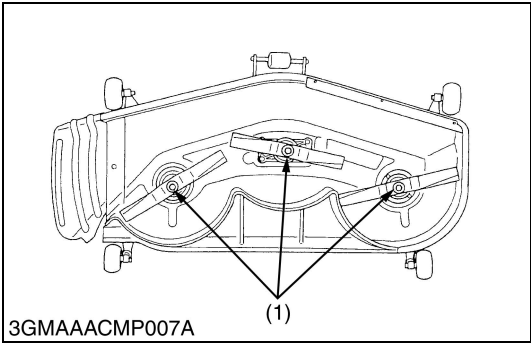
To keep the mower working in good condition as well as to avoid any accident and trouble, carry out periodic inspection and maintenance. Check the following points before use.

Service interval	Check points	Reference Page
Daily (Each use)	<ul style="list-style-type: none"> • Anything unusual in previous day's operation • Make sure mower blade screws are tighten • Check mower blades for wear or damage • Check gear box oil level • Check oil leaks • Check all hardware • Make sure all pins are in place • Clean mower deck • Apply grease to universal joint • Apply grease to spindle shafts (Bevel gear shaft and blade shafts) • Apply grease to belt tension pulley • Apply grease to belt tension pivot • Apply grease to balance shaft (RCK60B-22BX only) 	– G-6 S-4 G-6 – – – – G-7 G-7 G-7 G-7 G-8
Initial 50 hours	<ul style="list-style-type: none"> • Change gear box oil 	G-8
Every 150 hours	<ul style="list-style-type: none"> • Change gear box oil 	G-8
Every 2 years (After purchase)	<ul style="list-style-type: none"> • Replace gear box oil seal 	G-8

W1013580

6. CHECK AND MAINTENANCE

[1] CHECK POINTS OF DAILY OR EACH USE



Retightening Mower Blade Screw

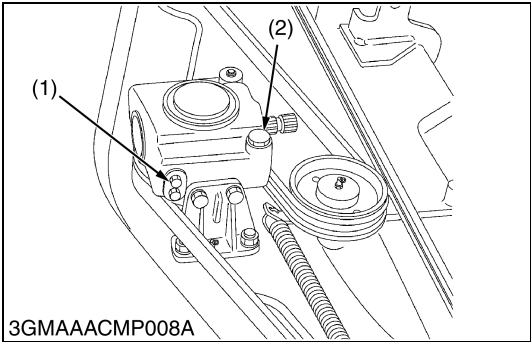
⚠ CAUTION

- **To avoid injury, always handle the mower blade with care.**
1. Dismount the mower and turn it over to expose the mower blades.
 2. Wedge a block of wood securely between the mower blade and mower deck.
 3. Retighten the mower blade screw to the specified torque.
 4. If the mower blade screw is worn or broken, replace it.

Tightening torque	Mower blade screw	98.1 to 117.1 N·m 10.0 to 12.0 kgf·m 72.3 to 86.8 ft-lbs
-------------------	-------------------	--

(1) Mower Blade Screw

W1025290



Checking Gear Box Oil Level

1. Place the mower on level ground.
2. Loosen the check plug (1), and check to see if oil seems from the opening.
3. If the oil level is low, remove the oil filler plug (2) and add new gear oil.

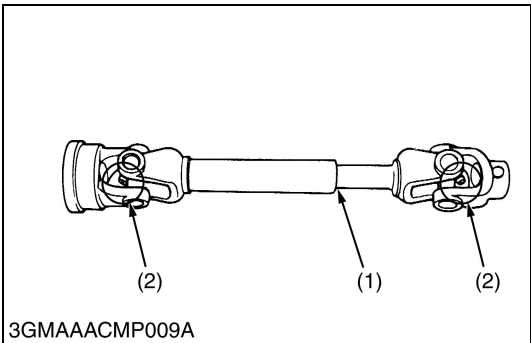
■ IMPORTANT

- **Use the specified gear oil.**
Refer to “LUBRICANTS”. (See page G-3.)

(1) Check Plug

(2) Oil Filler Plug

W1025491



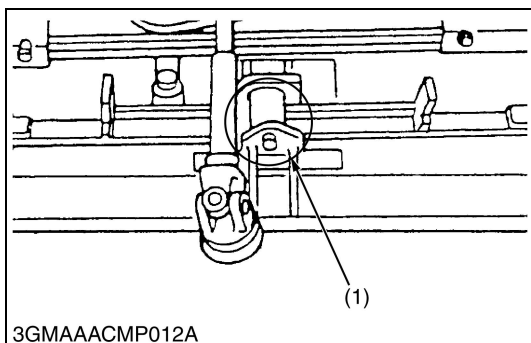
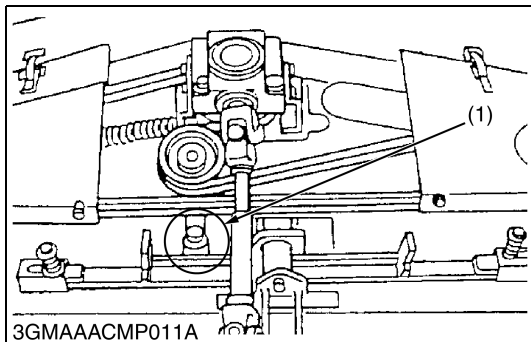
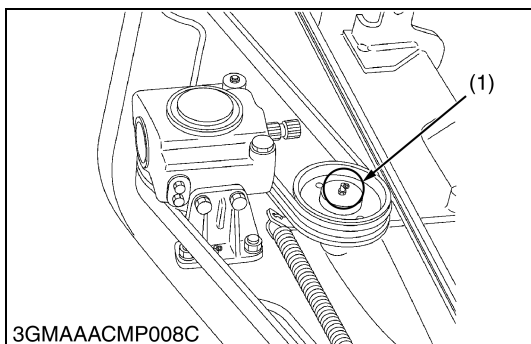
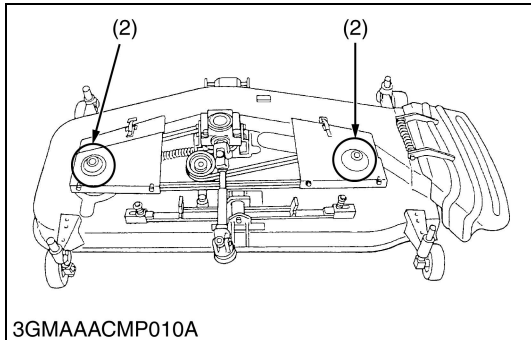
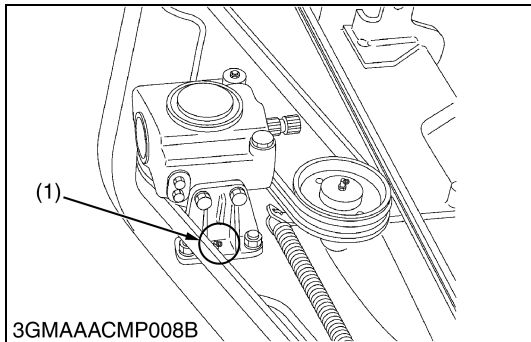
Greasing Universal Joint

1. Grease the internal splines (1) and grease nipples (2) of the universal joint if the amount of grease is insufficient.

(1) Spline

(2) Grease Nipple

W1013305

**Greasing Spindle Shafts**

1. Grease the grease nipples (1), (2) of the spindle shafts if the amount of grease is insufficient.

(1) Grease Nipple (Bevel Gear Shaft) (2) Grease Nipple (Blade Shaft)

W1013808

Greasing Belt Tension Pulley

1. Grease the grease nipple (1) of the belt tension pulley if the amount of grease is insufficient.

(1) Grease Nipple

W1014220

Greasing Belt Tension Pivot

1. Grease the grease nipple (1) of the belt tension pivot if the amount of grease is insufficient.

(1) Grease Nipple

W1014390

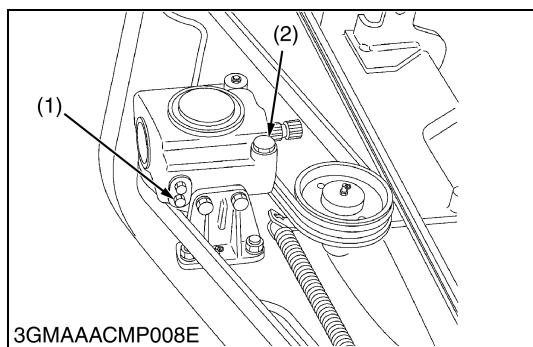
Greasing Balance Shaft (RCK60B-22BX)

1. Grease the grease nipple (1) of the balance shaft if the amount of grease is insufficient.

(1) Grease Nipple

W1014604

[2] CHECK POINT OF INITIAL 50 HOURS



Changing Gear Box Oil

1. Dismount the mower from the tractor, and place the mower on level ground.
2. Remove the oil filler plug (2).
3. Remove the drain plug (1), and drain the used oil completely.
4. After draining the used oil, reinstall the drain plug.
5. Fill with new oil up to the specified level.

■ IMPORTANT

- Use the specified gear oil.
Refer to "LUBRICANTS". (See page G-3.)

(1) Drain Plug

(2) Oil Filler Plug

W1028353

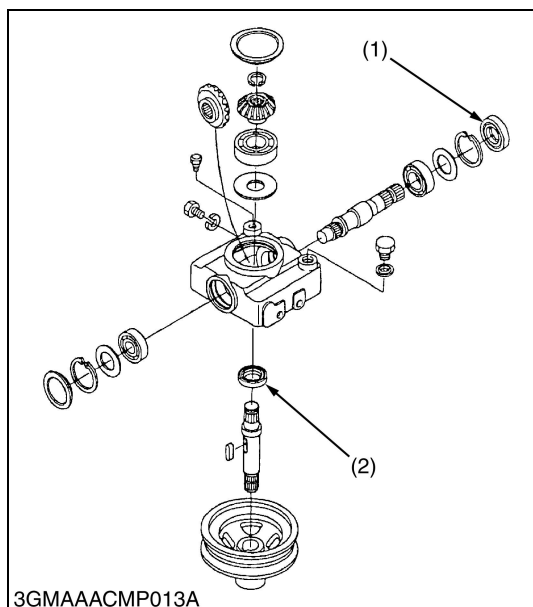
[3] CHECK POINT OF EVERY 150 HOURS

Changing Gear Box Oil

1. See above.

W1029013

[4] CHECK POINT OF EVERY 2 YEARS



Replacing Gear Box Oil Seal

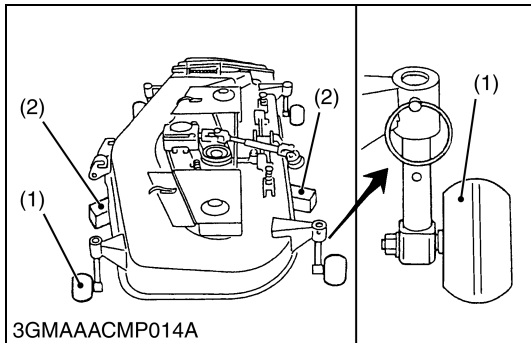
1. Replace the gear box oil seals (1), (2) with new ones. (See page S-7.)

(1) Oil Seal

(2) Oil Seal

W1029072

7. SETTING UP MOWER



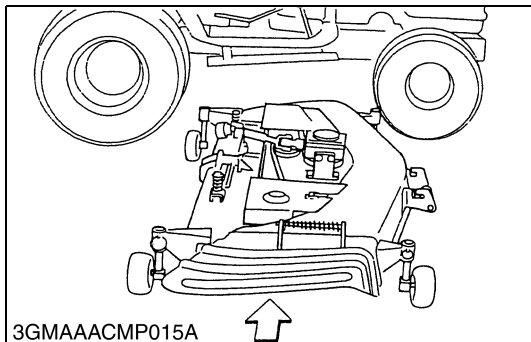
Assembling Mower

1. Take out all mower components from the case, and assemble the mower.
2. Support the mower deck with a block (2) as shown in the figure.
3. Turn the anti-scalp rollers (1) sideways position (RCK54-15BX, RCK54-22BX and RCK60B-22BX).
4. Remove the block.

(1) Anti-scalp Roller

(2) Block

W1016757



Setting Mower

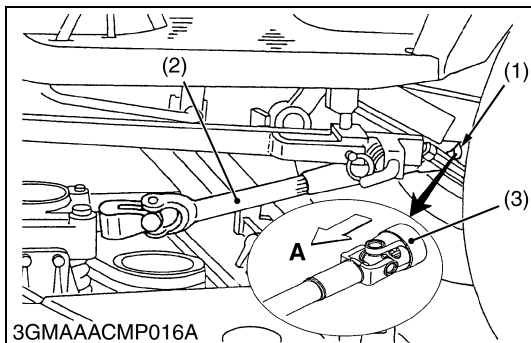


CAUTION

- Park the tractor on a firm, flat and level surface, set the parking brake, stop the engine and remove the key.

1. Start the engine and the hydraulic lever rearward to raise the mower rear link to the highest position.
2. Stop the engine and remove the key.
3. Roll the mower under the tractor from right side.

W1016877



Universal Joint

1. Pull back the coupler (3) of the universal joint (2).
2. Push the universal joint (2) onto the mid-PTO shaft (1), and release the coupler (3).

■ IMPORTANT

- Slide the universal joint back and forward to make sure the universal joint is locked securely.

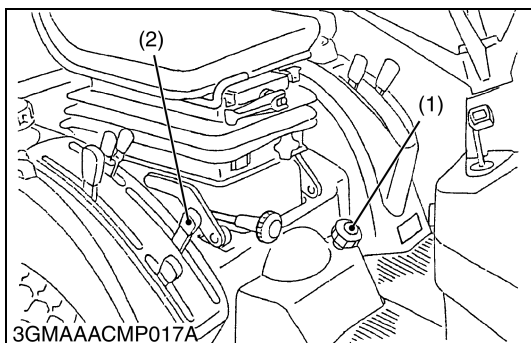
(1) Mid-PTO Shaft

A : Pull

(2) Universal Joint

(3) Coupler

W1017099



Rear Link

1. Set the cutting height control dial (1) to zero inch position.
2. Operate the tractor's hydraulic control lever (2) forward to lower the mower rear links (3).

Attach the rear link (3) to the mower with the L-pins (4).

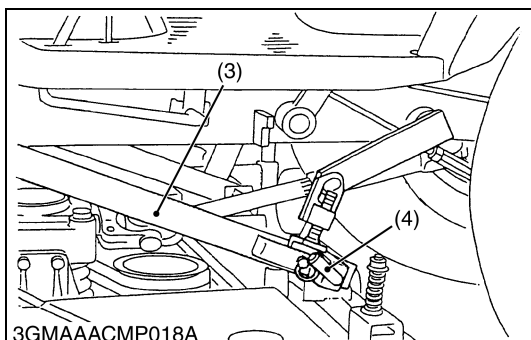
(1) Cutting Height Control Dial

(3) Rear Link

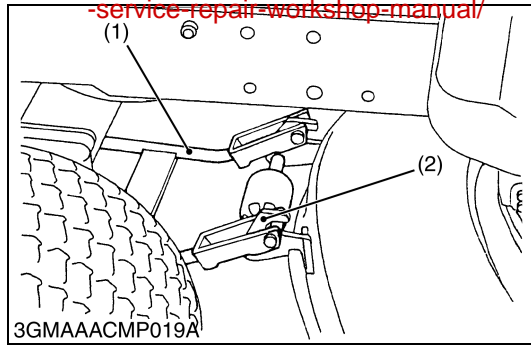
(2) Hydraulic Control Lever

(4) L-pin

W1017307



~~-service-repair-workshop-manual/~~



Front Link

1. Hook the front link (1) to the front bracket groove (2) as shown in the figure.

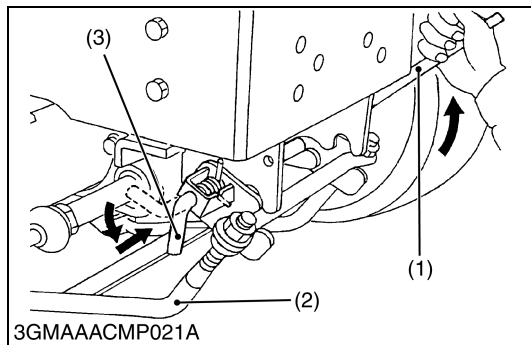
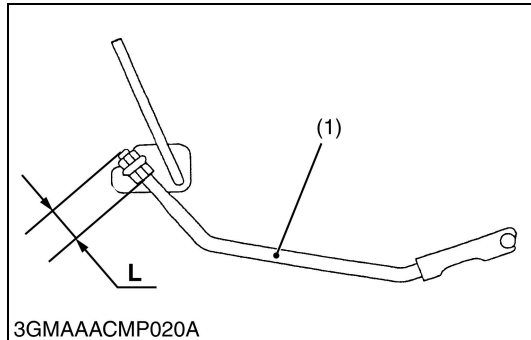
(Reference)

- Make sure the length (L) of the front link (1) is 48 mm (1.8897 in.).

(1) Front Link

(2) Front Bracket Groove

W1017424



Mounting Front Link

1. Push down the front lever (1), pulling the L-pin (3).
2. Hook the front link (2) to the lever fulcrum, and lift the front lever (1).
3. Return the L-pin (3) to lock the front lever.

■ NOTE

- Make sure the front lever (1) is fixed with L-pin (3) securely.

(1) Front Lever

(3) L-pin

(2) Front Link

W1017680