

Service Manual

**SERIES 2000 TRACTORS,
MOWER DECKS AND ATTACHMENTS**

Model Numbers
2130, 2135, 2140, 2145, 2160, 2165, 2185,
38" Mower Deck, 42" Mower Deck, 190-300,
190-301, 190-314, 190-315, 190-302, 190-303 and 190-304

Thank you for purchasing an American built product
CUB CADET CORPORATION • P.O. BOX 368023 • CLEVELAND, OHIO 44136-9723

PRINTED IN U.S.A.

FORM NO. 772-4232

Sample of manual. Download All 289 pages at:

<https://www.arepairmanual.com/downloads/cub-cadet-series-2000-tractorsmower-decks-and-attachments-service-repair-workshop-manual/>

Product: Cub Cadet Series 2000 Tractors,Mower Decks And Attachments Service Repair Workshop Manual
Full Download: <https://www.arepairmanual.com/downloads/cub-cadet-series-2000-tractorsmower-decks-and-attachments-service-repair-workshop-manual/>

RECORD OF REVISIONS

Change No.	Date	Description Of Revision
------------	------	-------------------------

WORK SAFELY — FOLLOW THESE RULES



This symbol is used to call your attention to instructions concerning your personal safety. Be sure to observe and follow these instructions.

1. To prevent accidental starting, always pull the high tension wire(s) off the spark plug(s) before servicing and/or adjusting the machine.
2. To prevent injury, do not allow children or bystanders in the vicinity of the machine while it is being adjusted and/or serviced.
3. Do not wear jewelry (rings, wrist watches, necklaces, etc.) or loose fitting clothing when working on machinery; they could catch on moving parts, causing serious injury. Wear sturdy, rough-soled work shoes. Never adjust and/or service a machine in bare feet, sandals or sneakers.
4. Always wear safety glasses when using a hammer, chisel or other tools that may cause chips to fly.
5. Be sure to reinstall all safety devices, guards or shields after adjusting and/or servicing the machine.
6. When operating a power washer to clean a machine before servicing, be careful at all times to avoid injury. Maintain proper footing and balance at all times. Never direct the spray at people or animals, as high pressure spray can cause serious injury.
7. If a portable heater is used to heat the service area, the following precautions must be observed:
 - a. Do not use portable heaters in the presence of volatile materials such as gasoline, paint or paint thinner. A fire or explosion may result.
 - b. When in operation, locate the heater away from the immediate work area to avoid accidental contact, which could result in severe burns or ignite your clothing.
 - c. Portable heaters consume oxygen and emit hazardous combustion fumes. A heater should be used only in a well ventilated area. Keep a window or door partially open to provide ventilation.
 - d. Keep the heater at least four feet from all combustible materials.
 - e. Never use gasoline as fuel.
8. Gasoline is highly flammable — observe the following precautions when handling gasoline:
 - a. Use an approved gasoline container.
 - b. Never remove the fuel tank cap or fill the fuel tank when the engine is running, is hot, or is indoors. **DO NOT SMOKE** when working around flammable fuel.
 - c. Avoid fires — be sure container or funnel does not touch the battery. Do not overfill the fuel tank. Wipe up all spilled gasoline.
 - d. Replace fuel tank cap securely.
9. Never use trouble lights or electric powered tools that have cut or damaged cords or plugs. Be sure all electric tools are properly grounded.
10. Never run an engine in a confined area, such as a garage or storage building, any longer than is necessary for immediate moving of the machine out of or into the area. **EXHAUST GASES ARE TOXIC. OPENING DOORS AND WINDOWS MAY NOT PROVIDE ADEQUATE VENTILATION.**
11. After servicing, be sure all tools, spare parts, and/or servicing equipment are removed from the machine.
12. Electrical storage batteries give off highly flammable hydrogen gas when charging, and continue to do so for some time after receiving a steady charge. Do not, under any circumstances, allow an electrical spark or an open flame near the battery. Always disconnect the battery cables (negative cable first) before working on the electrical system.
13. Hydraulic fluid escaping under pressure can have enough force to penetrate the skin. Hydraulic fluid may also infect a minor cut or opening in the skin. If injured by escaping fluid, see a doctor at once. Serious infection or reaction can result if medical treatment is not given immediately.

Do not attempt to repair or tighten hoses that are under pressure or with the tractor engine running. Cycle all hydraulic control valves to relieve all pressure before disconnecting lines or performing other work on the hydraulic system. Make

sure all connections are tight and hoses and lines are in good condition before applying pressure to the system. To locate a leak under pressure, use a small piece of cardboard or wood. Never use your hands.

14. When using a welder or acetylene torch, always wear welding goggles and gloves. Keep a charged fire extinguisher within reach. Do not weld or heat areas near the fuel tank, fuel lines, hydraulic lines, or battery.
15. Always use safety stands in conjunction with hydraulic jacks or hoists. Do not rely on the jack or hoist to carry the load; it could fail, causing serious injury and/or damage. Be sure jack stands are properly positioned to prevent tipping or roll-over.
16. When removing supporting components or disassembling machines, be sure to use safety stands and adequate supports to prevent tipping or rollover and to prevent components from falling.

17. Use a safety catch on all hoist hooks. Do not take a chance, the load could slip off the hook.
18. Use pullers to remove bearings, bushings, gears, sleeves, etc. when applicable. Use hammers, punches and chisels only when absolutely necessary. Then, be sure to wear safety glasses.
19. Petroleum based solvents used for cleaning parts are flammable. Use care to avoid fire or explosion when using these solvents.
20. Be careful when using compressed air to dry parts. Use approved air fixtures, do not exceed 30 psi, wear safety glasses or goggles, and use proper shielding to protect everyone in the work area.

IMPORTANT: The above is only a partial list of safe work rules. In addition, always refer to the Operator's Manual for the specific machine for additional safe work rules regarding the machine operation.

TABLE OF CONTENTS

Section/paragraph	Page
1 GENERAL INFORMATION AND MANUAL USAGE	1-1
1-1. Safety Precautions.....	1-1
1-2. General.....	1-1
1-3. Reference Data.....	1-1
1-4. Facilities	1-2
1-5. Special Service Information	1-2
2 DEALER PREPARATION.....	2-1
2-1. General.....	2-1
2-2 Battery Activation	2-1
3 PREVENTIVE MAINTENANCE.....	3-1
3-1 General.....	3-1
4 TROUBLESHOOTING AND TESTING.....	4-1
4-1 General.....	4-1
4-2 Troubleshooting	4-1
5 CORRECTIVE MAINTENANCE	5-1
5-1 General.....	5-1
5-2 Section Use.....	5-1
5-3 Hood, Grille and Side Panels (All Models).....	5-1
5-4 Battery and Electrical Components (Models 2130, 2135, 2140, 2145 and 2185).....	5-7
5-5 Battery and Electrical Components (Models 2160 and 2165).....	5-11
5-6 PTO Clutch (Models 2130, 2135, 2140 and 2145).....	5-15
5-7 PTO Clutch (Models 2160, 2165 and 2185).....	5-18
5-8 Front Wheels (All Models).....	5-20
5-9 Rear Wheels (All Models).....	5-21
5-10 Front Axle and Connections (All Models).....	5-21
5-11 Seat and Seat Support Assembly (All Models)	5-25
5-12 Fender and Running Board (Models 2130, 2135, 2140 and 2145).....	5-28
5-13 Fender and Running Board (Models 2160, 2165 and 2185).....	5-31
5-14 Dash Panel, Bulkhead and Engine Controls (All Models).....	5-34
5-15 Steering Assembly (All Models)	5-37
5-16 Implement Lift Handle (All Models)	5-41
5-17 Implement Lift Hanger (All Models).....	5-44
5-18 Fuel Tank (All Models)	5-46
5-19 Control Pedals and Brake Linkage (All Models).....	5-48
5-20 Six Speed Transmission Controls (Models 2130, 2140 and 2160).....	5-53
5-21 Hydro Transmission Controls (Models 2135, 2145, 2165 and 2185).....	5-56
5-22 Drive Line (Models 2130, 2140 and 2160).....	5-60
5-23 Drive Line (Models 2135, 2145, 2165 and 2185).....	5-63
5-24 Clutch Assembly, Control Arm and Interlock Linkage (Models 2130, 2140 and 2160)...	5-66
5-25 Hydrostatic Transmission, Neutral Linkage and Hydraulic Lines (Models 2135, 2145, 2165 and 2185)	5-72

Section/paragraph	Page
5-26 Transaxle Removal (All Models)	5-82
5-27 Brake Assembly (All Models)	5-86
5-28 Axle Housing and Axle Assemblies (All Models).....	5-88
5-29 Six Speed Transaxle (Models 2130, 2140 and 2160)	5-90
5-30 Hydrostatic Transaxle (Models 2135, 2145, 2165 and 2185).....	5-101
5-31 Engine and Muffler Removal (All Models).....	5-106
5-32 Frame (All Models).....	5-111
5-33 38-Inch Mower Deck (Tractor Models 2130 and 2135).....	5-113
5-34 42-Inch Mower Deck (Tractor Models 2140 and 2145).....	5-120
5-35 46-Inch Mower Deck (Model 190-300).....	5-127
5-36 48-Inch Mower Deck (Model 190-301).....	5-135
5-37 Mower Deck Spindle Assembly (All Models).....	5-145
6 ADJUSTMENTS	6-1
6-1 General.....	6-1
6-2 Hood and Grille (All Models)	6-1
6-3 PTO Clutch Burnishing Procedure (All Models)	6-1
6-4 Adjusting the Pto Clutch (Models 2160, 2165 and 2185).....	6-1
6-5 Front Pivot Axle Adjustment (All Models).....	6-2
6-6 Front Wheel Alignment (All Models).....	6-2
6-7 Adjusting Lift Assist Spring Tension (All Models).....	6-3
6-8 Brake Adjustment (All Models).....	6-4
6-9 Clutch Adjustment Rod — AGS Six Speed Tractors (Models 2130, 2140 and 2160).....	6-5
6-10 Hydro Adjustment Rod — HDS Hydrostatic Tractors	6-5
(Models 2135, 2145, 2165 and 2185)	
6-11 Shift Interlock Rod Adjustment — AGS Six Speed Tractors	6-6
(Models 2130, 2140 and 2160)	
6-12 Hydro Stop Rod Adjustment — HDS Hydrostatic Tractors	6-6
(Models 2135, 2145, 2165 and 2185)	
6-13 Neutral Adjustment — AGS Six Speed Tractors (Models 2130, 2140 and 2160).....	6-7
6-14 Neutral Adjustment — HDS Hydrostatic Tractors	6-8
(Models 2135, 2145, 2165 and 2185)	
6-15 Throttle Cable Adjustment (All Models).....	6-9
6-16 Choke Cable Adjustment (All Models).....	6-9
7 ATTACHMENTS.....	7-1
7-1 General.....	7-1
7-2 38 and 42 Inch Mulching Attachments (Models 190-314 and 190-315).....	7-1
7-3 42 Inch Spring Trip Blade (Model 190-302)	7-5
7-4 40 Inch Snow Thrower Attachment (Model 190-303).....	7-11
7-5 28 Inch Rear Mounted Tiller (Model 190-304).....	7-18
Appendix A Related Service Manuals	A-1
Appendix B Bulk Service Items.....	B-1
Appendix C Inspecting and Teating Electrical Components.....	C-1
C-1 General.....	C-1
C-2 Replacement of Starter Solenoid (Models 2160 and 2165)	C-1
C-3 Replacement of the PTO Switch and Reverse Relay (All Models).....	C-1
C-4 Replacement of the Brake Pedal Interlock Switch (All Models)	C-2
C-5 Battery Inspection and Tests.....	C-3

Section/paragraph	Page
Appendix D Electrical Schematics and Circuit Descriptions.....	D-1
D-1 General.....	D-1
D-2 Circuit Description and Schematics	D-1
Appendix E Electrical Connection Insulators.....	E-1
Appendix F Mower Deck Belt Information.....	F-1
Appendix G Basics Of Mower Deck Operation.....	G-1
G-1 General.....	G-1
G-2 Basic Cutting Blade Operation.....	G-1
G-3 Mowing With a Correctly Leveled Mower Deck.....	G-3
G-4 Mowing With an Incorrectly Leveled Mower Deck	G-3
G-5 Correct Mower Deck Leveling.....	G-3
G-6 Mowing With a Multi-Blade Mower Deck.....	G-5
Appendix H Torque Data	H-1

LIST OF ILLUSTRATIONS

Number	Title	Page
1-1	Chassis Serial Number Plate.....	1-1
3-1	Model 2130 Lubrication Points.....	3-4
3-2	Model 2135 Lubrication Points.....	3-7
3-3	Model 2140 Lubrication Points.....	3-10
3-4	Model 2145 Lubrication Points.....	3-13
3-5	Model 2160 Lubrication Points.....	3-16
3-6	Model 2165 Lubrication Points.....	3-19
3-7	Model 2185 Lubrication Points.....	3-22
3-8	Model 190-300 46" Mower Deck Lubrication Guide.....	3-23
3-9	Model 190-301 48" Mower Deck Lubrication Guide.....	3-24
5-1	Hood, Grille and Side Panels (All Models)	5-2
5-2	Side Panel Removal.....	5-3
5-3	Headlight Reflector and Lens Assembly.....	5-5
5-4	Battery and Electrical Components (Models 2130, 2135, 2140, 2145 and 2185)	5-8
5-5	Battery and Electrical Components (Models 2160 and 2165).....	5-12
5-6	PTO Clutch (Models 2130, 2135, 2140 and 2145).....	5-16
5-7	PTO Clutch (Models 2160, 2165 and 2185).....	5-18
5-8	Front Wheels (All Models).....	5-20
5-9	Rear Wheels (All Models).....	5-21
5-10	Front Axle and Connections (All Models).....	5-22
5-11	Pivot Axle Limiter Bolt Adjustment.....	5-24
5-12	Seat and Seat Support Assembly (All Models).....	5-26
5-13	Seat Switch Removal (All Models)	5-27
5-14	Fender and Running Board (Models 2130, 2135, 2140 and 2145).....	5-29
5-15	Fender and Running Board (Models 2160, 2165 and 2185).....	5-32
5-16	Dash Panel, Bulkhead and Engine Controls (All Models)	5-35
5-17	Steering Assembly (All Models).....	5-38
5-18	Aligning Steering Gear With Lower Steering Arm	5-40
5-19	Implement Lift Handle (All Models).....	5-41
5-20	Implement Lift Hanger (All Models).....	5-45
5-21	Fuel Tank (All Models).....	5-47
5-22	Control Pedals and Brake Linkage (All Models).....	5-49
5-23	Six Speed Transmission Controls (Models 2130, 2140 and 2160)	5-54
5-24	Hydro Transmission Controls (Models 2135, 2145, 2165 and 2185).....	5-57
5-25	Drive Line (Models 2130, 2140 and 2160)	5-61
5-26	Drive Line (Models 2135, 2145, 2165 and 2185)	5-63
5-27	Clutch Assembly, Control Arm and Interlock Linkage (Models 2130, 2140 and 2160)	5-66
5-28	Clutch Assembly (Models 2130, 2140 and 2160).....	5-68
5-29	Hydrostatic Transmission, Neutral Linkage and Hydraulic Lines (Models 2135,.....	5-73
	2145, 2165 and 2185)	
5-30	Hydrostatic Transmission (Models 2135, 2145, 2165 and 2185).....	5-75
5-31	Blocking the Deck.....	5-82
5-32	Transaxle Removal (All Models).....	5-84
5-33	Brake Assembly (All Models).....	5-86
5-34	Axle Housing and Axle Assemblies (All Models).....	5-89
5-35	Six Speed Transaxle (Models 2130, 2140 and 2160)	5-91
5-36	Interlock Shift Assembly (Models 2130, 2140 and 2160).....	5-93
5-37	Differential Gear Assembly.....	5-94

Number	Title	Page
5-38	Shift Shaft Assembly (Models 2130, 2140 and 2160).....	5-95
5-39	Installing Shift Keys (Models 2130, 2140 and 2160).....	5-97
5-40	Hydrostatic Transaxle (Models 2135, 2145, 2165 and 2185).....	5-102
5-41	Differential Gear Assembly.....	5-103
5-42	Engine Control Cables (Model 2185 Shown).....	5-107
5-43	Wire Harness Connections (Model 2185 Shown)	5-107
5-44	Engine and Muffler Mounting (Models 2130, 2135, 2140 and 2145)	5-108
5-45	Engine and Muffler Mounting (Models 2160, 2165 and 2185)	5-109
5-46	Frame and Attachments (All Models).....	5-112
5-47	Deck and Attachments (Tractor Models 2130 and 2135).....	5-114
5-48	Deck Drive Components (Tractor Models 2130 and 2135).....	5-115
5-49	Deck and Attachments (Tractor Models 2140 and 2145).....	5-121
5-50	Deck Drive Components (Tractor Models 2140 and 2145).....	5-123
5-51	Deck and Attachments (Model 190-300 Mower Deck).....	5-128
5-52	Deck Drive Components (Model 190-300 Mower Deck).....	5-129
5-53	Deck and Attachments (Model 190-301 Mower Deck).....	5-137
5-54	Deck Drive Components (Model 190-301 Mower Deck).....	5-139
5-55	Blade Spindle Assembly (All Mower Decks)	5-145
5-56	Hand Packing Bearing Cones With Grease.....	5-147
6-1	Adjusting PTO Air Gap (Models 2160, 2165 and 2185).....	6-1
6-2	Brake Connections.....	6-4
6-3	Adjustment Rod Connectons.....	6-6
6-4	Throttle and Choke Cable Connections (Models 2130, 2135, 2160 and 2165 Shown)	6-9
7-1	Mulching Kit Components	7-1
7-2	Loosen Hex Nut Securing Cutting Blade.....	7-2
7-3	Removal Of Cutting Blade.....	7-2
7-4	Mulching Baffle Assembly	7-3
7-5	Positioning Mulching Baffle.....	7-3
7-6	Seating the Baffle Assembly	7-4
7-7	Installing Blades and Hardware.....	7-4
7-8	Using Pilot Holes To Align Blades.....	7-5
7-9	42 Inch Spring Trip Blade Components (Model 190-302).....	7-6
7-10	Removing Front Bumper	7-7
7-11	Installing the Lift Bracket.....	7-7
7-12	Attaching Handle Support Tube.....	7-7
7-13	Installing Blade Pivot Handle.....	7-7
7-14	Routing Pivot Release Cable	7-8
7-15	Attaching Trigger To Cable	7-8
7-16	Inserting Flat Weld Nut.....	7-8
7-17	Installing Trigger Assembly	7-8
7-18	Installing Tie Straps.....	7-9
7-19	Attaching Lift Rod To A-frame.....	7-9
7-20	Loosen Front Support Plate	7-9
7-21	Installing Hitch Assembly	7-10
7-22	Attaching Adjustment Rod To Lift Bracket.....	7-10
7-23	Adjusting the Blade	7-10
7-24	40 Inch Snow Thrower Components (Model 190-303).....	7-11
7-25	Removing Front Bumper	7-12
7-26	Installing Frame Mounting Brackets.....	7-12
7-27	Installing Discharge Chute	7-13
7-28	Installing Chute Crank Support Tube and Tilt Handle.....	7-13

Number	Title	Page
7-29	Install Chute Crank Rod	7-13
7-30	Attaching Chute Crank Rod.....	7-13
7-31	Inserting Flat Weld Nut.....	7-14
7-32	Installing Snow Thrower Lift Handle and Latch Release Cable.....	7-14
7-33	Installing Trigger Assembly	7-14
7-34	Position Snow Thrower.....	7-15
7-35	Attaching Snow Thrower To Tractor Frame	7-15
7-36	Attaching Double Pulley Subframe Assembly.....	7-16
7-37	Installing PTO Belt.....	7-16
7-38	Position Flat Idler Pulley.....	7-16
7-39	Adjusting Latch Release Cable	7-16
7-40	Shave Plate and Skid Shoes.....	7-17
7-41	Removing Belt Guide.....	7-17
7-42	Remove PTO Drive Belt.....	7-17
7-43	Stand Snow Thrower On Auger Housing	7-18
7-44	Removing Auger Belt From Snow Thrower.....	7-18
7-45	28 Inch Rear Mounted Tiller Components (Model 190-304)	7-19
7-46	Installing Lift Cylinder Mounting Bracket	7-20
7-47	Marking Location For Holes.....	7-20
7-48	Marking Hole Location For Electric Lift Switch.....	7-21
7-49	Installing Lift Switch.....	7-21
7-50	Install Left Channel Bracket Assembly.....	7-22
7-51	Install Lift Arm and Spacers.....	7-22
7-52	Install Right Channel Bracket.....	7-22
7-53	Attaching Helper Springs.....	7-23
7-54	Installing Idler Shaft and Bracket.....	7-23
7-55	Securing Idler Shaft.....	7-23
7-56	Installing Roll Pin.....	7-23
7-57	Routing the PTO Belt.....	7-24
7-58	Installing V-Idler Pulley.....	7-24
7-59	Proper PTO Belt Routing.....	7-24
7-60	Attaching Tiller To Tractor.....	7-25
7-61	Attaching Lift Cylinder To Tractor.....	7-25
7-62	Attaching Lift Cylinder To Tiller.....	7-25
7-63	Installing Extension Spring.....	7-26
7-64	Install PTO Belt On PTO Clutch.....	7-26
7-65	Place PTO Belt In Front Idler Pulleys.....	7-27
7-66	Correct PTO Belt Routing.....	7-27
7-67	Lubricating Right Bearing Cup.....	7-28
7-68	Tiller Tines.....	7-28
C-1	PTO Switch Terminals.....	C-1
C-2	Reverse Relay Terminals.....	C-2
C-3	Interlock Switch Terminals — Position A.....	C-2
C-4	Interlock Switch Terminals — Position B.....	C-3
D-1	Schematic — Engine Crank, Models 2130, 2135, 2140 and 2145.....	D-5
D-2	Schematic — Engine Crank, Models 2160 and 2165.....	D-6
D-3	Schematic — Engine Crank, Model 2185.....	D-7
D-4	Schematic — Engine Run and Charging Circuit, Models 2130, 2135, 2140 and 2145.....	D-8
D-5	Schematic — Engine Run and Charging Circuit, Models 2160 and 2165.....	D-9
D-6	Schematic — Engine Run and Charging Circuit, Model 2185.....	D-10
D-7	Schematic — Normal/Safety Engine Shutdown, All Models.....	D-11
D-8	Schematic — Pto Start/run, All Models	D-12

Number	Title	Page
F-1	Belt Position In Pulley Sheaves	F-1
F-2	Properly Aligned Drive Belt	F-1
F-3	Excessively Misaligned Drive Belt.....	F-1
F-4	Cracked Drive Belt	F-1
G-1	Basic Cutting Blade Operation.....	G-1
G-2	Cutting Grass With Mower Deck Correctly Leveled	G-2
G-3	Cutting Grass With an Incorrectly Leveled Mower Deck.....	G-4
G-4	Mowing With Multi-blade Mowing Decks.....	G-6

LIST OF TABLES

Number	Title	Page
1-1	Equipment in This Manual.....	1-1
1-2	Model 2130 Specifications.....	1-3
1-3	Model 2135 Specifications.....	1-4
1-4	Model 2140 Specifications.....	1-5
1-5	Model 2145 Specifications.....	1-6
1-6	Model 2160 Specifications.....	1-7
1-7	Model 2165 Specifications.....	1-8
1-8	Model 2185 Specifications.....	1-9
2-1	Pre-delivery Check List.....	2-2
3-1	Model 2130 Maintenance.....	3-2
3-2	Model 2130 Lubrication.....	3-3
3-3	Model 2135 Maintenance.....	3-5
3-4	Model 2135 Lubrication.....	3-6
3-5	Model 2140 Maintenance.....	3-8
3-6	Model 2140 Lubrication.....	3-9
3-7	Model 2145 Maintenance.....	3-11
3-8	Model 2145 Lubrication.....	3-12
3-9	Model 2160 Maintenance.....	3-14
3-10	Model 2160 Lubrication.....	3-15
3-11	Model 2165 Maintenance.....	3-17
3-12	Model 2165 Lubrication.....	3-18
3-13	Model 2185 Maintenance.....	3-20
3-14	Model 2185 Lubrication.....	3-21
4-1	Troubleshooting Guide.....	4-1
A-1	Related Service Manuals.....	A-1
B-1	Bulk Service Items.....	B-1
E-1	Electrical Connection Insulators.....	E-1
G-1	Basic Mower Deck Troubleshooting.....	G-7
H-1	Standard Torque Data For Inch Nuts and Bolts - Foot Pounds.....	H-2
H-2	Standard Torque Data For Inch Nuts and Bolts - Newton Meters.....	H-3
H-3	Conversion Table - Inches To Millimeters.....	H-4
H-4	Conversion Table - Millimeters To Inches.....	H-5

SECTION 1

GENERAL INFORMATION AND MANUAL USAGE

1-1. SAFETY PRECAUTIONS.

1-1.1 Refer to the Safety Summary on page i, and observe all WARNINGS and CAUTIONS when servicing the tractors covered in this manual.



WARNING

This symbol indicates safety instructions which, if not followed, could cause personal injury and/or damage to the tractor component being serviced.



CAUTION

This symbol indicates instructions which, if not followed, could cause failure of the tractor component or could result in an environmental hazard.



NOTE

This symbol indicates general information which should be given special attention.

1-2 GENERAL.

1-2.1 This service manual cover Series 2000 tractors, mower decks and selected attachments. See Table 1-1. Service instructions for engines are detailed in separate service manuals. Refer to Appendix A, Related Service Manuals.

Table 1-1. Equipment in this Manual.

DESCRIPTION	MODEL NUMBER
Series 2000 Tractor	2130
Series 2000 Tractor	2135
Series 2000 Tractor	2140
Series 2000 Tractor	2145
Series 2000 Tractor	2160
Series 2000 Tractor	2165
Series 2000 Tractor	2185
38" Mower Deck	Standard on models 2130 and 2135
42" Mower Deck	Standard on models 2140 and 2145
46" Mower Deck	190-300
48" Mower Deck	190-301
38" Mulching Attachment	190-314
42" Mulching Attachment	190-315
42" Spring Trip Blade	190-302
40" Snowthrower	190-303
28" Tiller	190-304

1-3 REFERENCE DATA.

1-3.1 **Specifications.** Specifications for each tractor model are contained in Tables 1-2 through 1-8.

1-3.2 **Serial Number Location.** The chassis serial number plate is located on the left hand side of the frame under the running board. Refer to Figure 1-1.

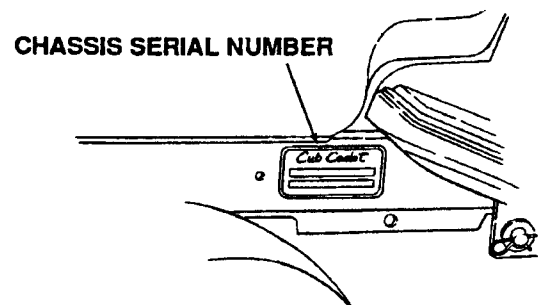


Figure 1-1. Chassis Serial Number Plate.

1-3.3 **Position Reference.** All references to LEFT, RIGHT, FRONT and REAR indicate that position on the tractor when seated in the operators position, unless specifically instructed to reference from a different position on the tractor.

1-4 **FACILITIES.**

1-4.1 The minimum requirement for facilities sufficient to service the tractors, decks and accessories covered in this manual is a normally equipped shop for the service of commercial power equipment.

1-5 **SPECIAL SERVICE INFORMATION.**

1-5.1 **Dealer Preparation.** Section 2 contains a check list of recommended procedures to be performed during pre-delivery set up of the tractors covered in this manual.

1-5.2 **Preventive Maintenance.** Maintenance schedules and lubrication guides for each Model are contained in Section 3.

1-5.3 **Troubleshooting.** Section 4 contains troubleshooting and testing information for the various systems and components of the tractors covered in this manual.

1-5.4 **Corrective Maintenance.** Instructions necessary to identify and correct problems are contained in Section 5.

1-5.6 **Adjustments.** Information on adjusting various system components is contained in Section 6.

1-5.7 **Attachments.** Information on selected attachments is contained in Section 7.

1-5.8 **Appendices.** The appendices contain the following support information:

- a. Appendix A — List of related Engine Service Manuals.
- b. Appendix B — List of bulk service items needed to maintain and service the equipment covered in this manual.
- c. Appendix C — Testing procedures for selected electrical components.
- d. Appendix D — Complete electrical schematics for each tractor.
- e. Appendix E — A graphic listing of electrical connectors/insulators available from Cub Cadet.
- f. Appendix F — Information concerning mower deck belt problems and possible causes.
- g. Appendix G — Information regarding the operation of the mower deck.
- h. Appendix H — General torque data charts and conversion tables.

Table 1-2. Model 2130 Specifications

	2130
CAPACITIES	
Fuel Tank	3 gallons
Crankcase (approximately)	4 pints
Transmission Case (approximately)	6 qts.
SIX SPEED DRIVE	
Speed: Forward	0 to 5 mph
Reverse	0 to 3 mph
ENGINE	
Make and Model	Kohler Command
Horsepower	12.5 HP
Cylinders	1
Bore	3.43 in.
Stroke	2.64 in.
Displacement (cubic inches)	24.29
Engine Speed (governed)	
Low Speed	1400 RPM
High Speed (no load)	3600 RPM \pm 75
Ignition	Battery
Spark Plug Gap (Cub Cadet No. 759-3336)040 in.
ELECTRICAL SYSTEM	
System Voltage	12 volt neg. ground
Battery	725-1635
Alternator	15 amp regulated
Fuse (auto type)	20 amp
Head Lamp Bulb	759-3693
BRAKES	Internal expanding
TIRE SIZES	
Front	15 x 6-6
Rear	20 x 9-8
DIMENSIONS	
Tread:	
Front with 15 x 6-6 tires	30.00 in.
Rear with 20 x 9-6 tires	27.50 in.
Wheelbase	47.00 in.
Length, over all	72.00 in.
Width, over all (w/ mower deck - chute up)	45.00 in.
Height, over all (to top of steering wheel)	42.00 in.
Ground Clearance	6.00 in.
Turning Radius	26.50 in.

Specifications are subject to change without notice.

Table 1-3. Model 2135 Specifications

	2135
CAPACITIES	
Fuel Tank	3 gallons
Crankcase (approximately)	4 pints
Transmission Case (approximately)	6 qts.
HYDROSTATIC DRIVE	
Speed: Forward	0 to 5.5 mph
Reverse	0 to 3 mph
ENGINE	
Make and Model	Kohler Command
Horsepower	12.5 HP
Cylinders	1
Bore	3.43 in.
Stroke	2.64 in.
Displacement (cubic inches)	24.29
Engine Speed (governed)	
Low Speed	1400 RPM
High Speed (no load)	3600 RPM \pm 75
Ignition	Battery
Spark Plug Gap (Cub Cadet No. 759-3336)040 in.
ELECTRICAL SYSTEM	
System Voltage	12 volt neg. ground
Battery	725-1635
Alternator	15 amp regulated
Fuse (auto type)	20 amp
Head Lamp Bulb	759-3693
BRAKES	Internal expanding
TIRE SIZES	
Front	15 x 6-6
Rear	20 x 9-8
DIMENSIONS	
Tread:	
Front with 15 x 6-6 tires	30.00 in.
Rear with 20 x 9-6 tires	27.50 in.
Wheelbase	47.00 in.
Length, over all	72.00 in.
Width, over all (w/ mower deck - chute up)	45.00 in.
Height, over all (to top of steering wheel)	42.00 in.
Ground Clearance	6.00 in.
Turning Radius	26.50 in.

Specifications are subject to change without notice.

Table 1-4. Model 2140 Specifications

	2140
CAPACITIES	
Fuel Tank	3 gallons
Crankcase (approximately)	4 pints
Transmission Case (approximately)	6 qts.
SIX SPEED DRIVE	
Speed: Forward	0 to 5 mph
Reverse	0 to 3 mph
ENGINE	
Make and Model	Onan Elite
Horsepower	14 HP
Cylinders	1
Bore	3.31 in.
Stroke	2.76 in.
Displacement (cubic inches)	23.7
Engine Speed (governed)	
Low Speed	1400 RPM
High Speed (no load)	3600 RPM \pm 75
Ignition	Battery
Spark Plug Gap (Cub Cadet No. 759-3340)035 in.
ELECTRICAL SYSTEM	
System Voltage	12 volt neg. ground
Battery	725-1635
Alternator	15 amp regulated
Fuse (auto type)	20 amp
Head Lamp Bulb	759-3693
BRAKES	Internal expanding
TIRE SIZES	
Front	15 x 6-6
Rear	20 x 9-8
DIMENSIONS	
Tread:	
Front with 15 x 6-6 tires	30.00 in.
Rear with 20 x 9-6 tires	27.50 in.
Wheelbase	47.00 in.
Length, over all	72.00 in.
Width, over all (w/ mower deck - chute up)	51.00 in.
Height, over all (to top of steering wheel)	42.00 in.
Ground Clearance	6.00 in.
Turning Radius	26.50 in.

Specifications are subject to change without notice.

Table 1-5. Model 2145 Specifications

	2145
CAPACITIES	
Fuel Tank	3 gallons
Crankcase (approximately)	4 pints
Transmission Case (approximately)	6 qts.
HYDROSTATIC DRIVE	
Speed: Forward	0 to 5.5 mph
Reverse	0 to 3 mph
ENGINE	
Make and Model	Onan Elite
Horsepower	14 HP
Cylinders	1
Bore	3.31 in.
Stroke	2.76 in.
Displacement (cubic inches)	23.7
Engine Speed (governed)	
Low Speed	1400 RPM
High Speed (no load)	3600 RPM \pm 75
Ignition	Battery
Spark Plug Gap (Cub Cadet No. 759-3340)035 in.
ELECTRICAL SYSTEM	
System Voltage	12 volt neg. ground
Battery	725-1635
Alternator	15 amp regulated
Fuse (auto type)	20 amp
Head Lamp Bulb	759-3693
BRAKES	Internal expanding
TIRE SIZES	
Front	15 x 6-6
Rear	20 x 9-8
DIMENSIONS	
Tread:	
Front with 15 x 6-6 tires	30.00 in.
Rear with 20 x 9-6 tires	27.50 in.
Wheelbase	47.00 in.
Length, over all	72.00 in.
Width, over all (w/ mower deck - chute up)	51.00 in.
Height, over all (to top of steering wheel)	42.00 in.
Ground Clearance	6.00 in.
Turning Radius	26.50 in.

Specifications are subject to change without notice.

Table 1-6. Model 2160 Specifications

	2160
CAPACITIES	
Fuel Tank	3 gallons
Crankcase (approximately)	3 pints 8 oz.
Transmission Case (approximately)	6 qts.
SIX SPEED DRIVE	
Speed: Forward	0 to 5.5 mph
Reverse	0 to 3 mph
ENGINE	
Make and Model	B & S Vanguard
Horsepower	16 HP
Cylinders	2
Bore	2.68 in.
Stroke	2.60 in.
Displacement (cubic inches)	29.3
Engine Speed (governed)	
Low Speed	1200 RPM
High Speed	
(no load)	3600 RPM
(full load)	3350 RPM
Valve Clearance (engine cold)	
Intake004-.006 in.
Exhaust004-.006 in.
Ignition	Battery
Spark Plug Gap (Cub Cadet No. 759-3336)030 in.
ELECTRICAL SYSTEM	
System Voltage	12 volt neg. ground
Battery	725-1635
Alternator	15 amp regulated
Fuse (auto type)	20 amp
Head Lamp Bulb	759-3693
BRAKES	Internal expanding
TIRE SIZES	
Front	16 x 6.5-8
Rear	23 x 9.5-12
DIMENSIONS	
Tread:	
Front with 16 x 6.5-8 tires	31.5 in.
Rear with 23 x 9.5-12 tires	30.25 in.
Wheelbase	47.00 in.
Length, over all	72.00 in.
Width, over all	39.00 in.
Height, over all (to top of steering wheel)	43.00 in.
Ground Clearance	6.00 in.
Turning Radius	28.00 in.

Specifications are subject to change without notice.

Table 1-7. Model 2165 Specifications

	2165
CAPACITIES	
Fuel Tank	3 gallons
Crankcase (approximately)	3 pints 8 oz.
Transmission Case (approximately)	6 qts.
HYDROSTATIC DRIVE	
Speed: Forward	0 to 6 mph
Reverse	0 to 3 mph
ENGINE	
Make and Model	B & S Vanguard
Horsepower	16 HP
Cylinders	2
Bore	2.68 in.
Stroke	2.60 in.
Displacement (cubic inches)	29.3
Engine Speed (governed)	
Low Speed	1200 RPM
High Speed	
(no load)	3600 RPM
(full load)	3350 RPM
Valve Clearance (engine cold)	
Intake004-.006 in.
Exhaust004-.006 in.
Ignition	Battery
Spark Plug Gap (Cub Cadet No. 759-3336)030 in.
ELECTRICAL SYSTEM	
System Voltage	12 volt neg. ground
Battery	725-1635
Alternator	15 amp regulated
Fuse (auto type)	20 amp
Head Lamp Bulb	759-3693
BRAKES	Internal expanding
TIRE SIZES	
Front	16 x 6.5-8
Rear	23 x 9.5-12
DIMENSIONS	
Tread:	
Front with 16 x 6.5-8 tires	31.5 in.
Rear with 23 x 9.5-12 tires	30.25 in.
Wheelbase	47.00 in.
Length, over all	72.00 in.
Width, over all	39.00 in.
Height, over all (to top of steering wheel)	43.00 in.
Ground Clearance	6.00 in.
Turning Radius	28.00 in.

Specifications are subject to change without notice.

Table 1-8. Model 2185 Specifications

	2185
CAPACITIES	
Fuel Tank	3 gallons
Crankcase (approximately)	4 pints
Transmission Case (approximately)	6 qts.
HYDROSTATIC DRIVE	
Speed: Forward	0 to 6 mph
Reverse	0 to 3 mph
ENGINE	
Make and Model	Kohler Command
Horsepower	18 HP
Cylinders	2
Bore	3.03 in.
Stroke	2.64 in.
Displacement (cubic inches)	38.1
Engine Speed (governed)	
Low Speed	1200 RPM
High Speed	
(no load)	3600 RPM
(full load)	3350 RPM
Ignition	Battery
Spark Plug Gap (Cub Cadet No. 759-3336)040 in.
ELECTRICAL SYSTEM	
System Voltage	12 volt neg. ground
Battery	725-1635
Alternator	15 amp regulated
Fuse (auto type)	20 amp
Head Lamp Bulb	759-3693
BRAKES	Internal expanding
TIRE SIZES	
Front	16 x 6.5-8
Rear	23 x 9.5-12
DIMENSIONS	
Tread:	
Front with 16 x 6.5-8 tires	31.5 in.
Rear with 23 x 9.5-12 tires	30.25 in.
Wheelbase	47.00 in.
Length, over all	72.00 in.
Width, over all	39.00 in.
Height, over all (to top of steering wheel)	43.00 in.
Ground Clearance	6.00 in.
Turning Radius	28.00 in.

Specifications are subject to change without notice.

SECTION 2 DEALER PREPARATION

2-1 GENERAL.

2-1.1 The Series 2000 tractors covered in this manual are shipped from the factory fully assembled. Engine oil has been added and the unit has been lubricated at the factory. However, it is a good practice to check the entire unit during the preparation process. Refer to Table 2-1 for a PRE-DELIVERY CHECK LIST which can be used as a guide to ensure a comprehensive inspection is performed when each unit is prepared for delivery. Lubrications guides can be found in Section 3 of this manual.

2-1.2 Tractors are shipped with a dry battery. Electrolyte must be added and the battery activated. Refer to paragraph 2-2 for proper battery activation procedures.

2-2 BATTERY ACTIVATION.



CAUTION

Proper activation of the battery will affect its life and performance. Failure to follow these steps can cause premature failure of the battery.

2-2.1 Activate battery with electrolyte as follows:



WARNING

Battery cables must be disconnected in the proper order to avoid arcing. When disconnecting cables from the battery, ALWAYS remove the negative cable first, and then remove the positive cable.



WARNING

Electrolyte is diluted sulfuric acid. Use extreme care to avoid spilling and to avoid contact with skin and eyes. Acid can destroy clothing and burn your skin. Should acid come in contact with your skin, flush the area immediately with clean cold water. If acid spills on clothing, first dilute with clean water, then neutralize with a solution of baking soda and water.

1. Remove the battery from the tractor and place on a work bench or table.
2. Fill each cell to the top of the plates with electrolyte.
3. Allow the battery to sit 30 minutes. This will allow the chemical action to take place between the electrolyte and battery plates.



NOTE

When the battery is charged, the heat will cause expansion of the electrolyte.

4. Re-check the electrolyte level and, if necessary, add electrolyte to completely cover the plates.
5. Connect the charger to the battery per instructions with the charger.



CAUTION

Charging the battery at more than the recommended 4 AMPS will shorten the service life of the battery, and may cause the plates to warp and short out the battery.

6. Charge the battery at 4 AMPS maximum until the specific gravity of each cell is 1.250 or higher.
7. Check the level of electrolyte in all cells and add, if necessary, to bring level up to split ring.
8. Wash off any spilled electrolyte.



WARNING

Battery cables must be installed in the proper order to avoid arcing. When connecting cables to the battery, ALWAYS connect the positive cable first, then connect the negative cable.

9. Install the battery in the tractor and connect the POSITIVE battery cable to the positive terminal of the battery.
10. Connect the NEGATIVE battery cable to the negative terminal of the battery.

Table 2-1. Pre-Delivery Check List

CUSTOMER NAME _____ MODEL NUMBER _____
CUSTOMER ADDRESS _____ SERIAL NUMBER _____
CITY _____ STATE _____ ZIP _____ TECHNICIAN _____

ENGINE INFORMATION	TRANSMISSION INFORMATION
Engine Make _____	Transmission make _____
Model No. _____	Model No. _____
Serial No. _____	Serial No. _____
Spec No. _____	

CUSTOMER SIGNATURE _____ DATE _____

Operator's manual complete?

- ☐ Owners manual
- ☐ Attachment guide
- ☐ Merchandising Catalog

Battery and connections

- ☐ Remove battery and fill to proper level
- ☐ Allow battery to stand for 30 minutes
- ☐ Charge at 4 AMPS max. to 1.265 specific gravity

Tire pressure

- ☐ Front
- ☐ Rear
- * Refer to owners manual for proper PSI

Check all lights and indicators

- ☐ Headlights
- ☐ Low oil light
- ☐ Hour meter

Lubrication

- ☐ Transmission oil level
- ☐ Engine oil level
- * Check tractor owners manual for type and grade

Air cleaner and connections

- ☐ Remove air cleaner cover to verify air cleaner is installed
- ☐ Insure retaining bolt seal is installed
- ☐ Insure proper installation of breather hose
- ☐ Proper operation of throttle and choke cables

Steering

- ☐ Check for 1/8 to 1/4 inch toe in.
- ☐ Insure equal travel right and left

Hydrostatic / Gear drive and brakes

- ☐ Check brakes
- ☐ Check for neutral when brake pedal is depressed
- ☐ Check for neutral when forward and reverse pedals are released
- ☐ Neutral interlock adjustment (6 Speed only)

Grease pivot points

- ☐ Front axle pivot bar
- ☐ Each steering knuckle
- ☐ Each front wheel
- ☐ Steering housing
- ☐ All grease points on mower deck
- * Refer to specific mower owners manual

Install attachments mower / snow blower etc.

- ☐ Check PTO air gap if applicable
- ☐ Follow burnishing procedures outlined in owners manual
- ☐ Adjust lift assist spring and inspect linkage
- ☐ Deck level adjustment

Safety operations

- ☐ Check no cut in reverse
- ☐ Check engine shutdown with PTO engaged and seat empty
- ☐ Check engine shutdown with empty seat and parking brake not engaged

Check engine speeds / Controls

- ☐ Low idle - 1200 RPM
- ☐ High idle - 3600 RPM

Final inspection

- ☐ Overall appearance
- ☐ Clean and polish

SECTION 3 PREVENTIVE MAINTENANCE

3-1. GENERAL

3-1.1 This section provides basic preventive maintenance and specific lubrication information for the Series 2000 tractors and decks covered in this manual. Refer to the appropriate Tables 3-1 through 3-14 and Figures 3-1 through 3-9.

LUBRICATION GUIDE



WARNING

The service life and reliability of any machine depends upon the care it is given. Proper lubrication is a very important part of that care. The lubrication schedules provided in this section reflect the minimal requirements to maintain the equipment. More frequent inspections and maintenance is preferable.

Using the lubrication illustrations (Figures 3-1 through 3-9) as a guide, make certain that all lubrication fittings are installed and functioning.

Be sure all fittings are free from dirt and paint so the lubricant is certain to enter the bearing.

Using a pressure lubricating gun, always force the lubricant through the full length of each bearing until it emerges at the end, carrying with it the worn lubricant and any dirt that may have entered the bearing.

Miscellaneous working parts not provided with lubrication fittings should be oiled regularly with a good grade of lubricating oil.

Always lubricate the tractor thoroughly before taking it to a remote location for a prolonged period of time.

Lubricant is cheap. Use plenty of it. Worn parts can be expensive to replace.

Keep your supply of lubricating oil and grease stored in clean containers, and covered to protect from dust and dirt.

Keep the lubricating gun nozzle clean and wipe dirt from the grease fittings before lubricating.

The symbols in the illustrations indicate the method of application and the hourly intervals to apply the lubricant.



Use a pressure lubricating gun and apply 251H EP grease (or equivalent No. 2 multi-purpose lithium grease) sufficient to flush out the old grease and dirt. Lubricate at the hourly intervals indicated on the symbols.



Dipstick, use to check engine and transmission oil before each use.

Table 3-1. Model 2130 Maintenance

Operation to be performed	Before each use	10 hours or once a month	30 hours or three times a season	50 hours or twice a season	100 hours or yearly	Before storage
Clean grille, engine air inlet screen, dash intake screen and side panel screens		More often under dirty conditions X				
Check engine oil level	X					
Fill fuel tank	X					
Change engine oil & oil filter	After first 5 hours				More often under dirty conditions X	
Check transmisson oil level	X					
Clean & re-oil foam air precleaner		X				
Check battery electrolyte level		X				
Grease front axle pivot bolt		X				
Grease steering knuckles		X				
Retorque rear wheel lug nuts		After first 10 hours X				
Clean cooling fins & external surfaces			X			
Service air cleaner paper cartridge					More often under dirty conditions	
Check spark plug					X	X
Grease steering gear housing			X			
Grease front wheel bearings			X			X
Drain fuel						X
Pivot bar adjustment bolts				X		
Deck spindles				X		
Spindle belt idler arm				X		
Lubricate all foot and lift control pivot points		X				



Maintenance information for optional equipment may be found in the manual which is included with that specific piece of equipment.

Table 3-2. Model 2130 Lubrication

Point of Lubrication	Check at Hours	Change at Hours	Capacity	Anticipated Air Temperature	
				Above + 32°F	Below + 32°F
Engine crankcase	Check before each use	100	Approx. 4 pints	<i>Cub Cadet</i> Engine Oil SAE 10W30 or 10W40	<i>Cub Cadet</i> Engine Oil SAE 5W20 or 5W30
Six speed transaxle and clutch assembly	Check before each use	Add as needed	Approx. 6 qts.	<i>Cub Cadet</i> Drive System Oil NOTE: <i>Cub Cadet</i> Drive System Oil is specially formulated for this application. If any other oil is used <i>Cub Cadet</i> will not be responsible for substandard performance. Failures due to use of improper fluid are not covered by warranty. For maximum protection, use <i>Cub Cadet</i> Drive System Oil.	
Steering knuckles and front axle pivot bolt	10			Use 251H EP grease or equivalent No. 2 multi-purpose lithium grease and apply two strokes (minimum) or sufficient grease to flush out old grease and dirt.	
Front wheel bearings	30			Two strokes (minimum) of the lubricator using 251H EP grease or equivalent No. 2 multi-purpose lithium grease.	
Steering gear housing	30			Two strokes (minimum) of the lubricator using 251H EP grease or equivalent No. 2 multi-purpose lithium grease.	
Deck spindles	50			Two strokes (minimum) of the lubricator using 251H EP grease or equivalent No. 2 multi-purpose lithium grease.	
Spindle belt idler arm	50			Two strokes (minimum) of the lubricator using 251H EP grease or equivalent No. 2 multi-purpose lithium grease.	
Foot and lift control pivot points	10			Use a liberal amount of high grade lubricating oil.	

**CHECK OIL LEVEL
BEFORE EACH USE**



Table 3-3. Model 2135 Maintenance

Operation to be performed	Before each use	10 hours or once a month	30 hours or three times a season	50 hours or twice a season	100 hours or yearly	Before storage
Clean grille, engine air inlet screen, dash intake screen and side panel screens		More often under dirty conditions X				
Check engine oil level	X					
Fill fuel tank	X					
Change engine oil & oil filter	After first 5 hours				More often under dirty conditions X	
Check transmisson oil level	X					
Replace transmisson oil filter		After first 10 hours X		After first 50 hours X	Every 100 hours thereafter X	
Clean & re-oil foam air precleaner		X				
Check battery electrolyte level		X				
Grease front axle pivot bolt		X				
Grease steering knuckles		X				
Retorque rear wheel lug nuts		After first 10 hours X				
Clean cooling fins & external surfaces			X			
Service air cleaner paper cartridge					More often under dirty conditions	
Check spark plug					X	X
Grease steering gear housing			X			
Grease front wheel bearings			X			X
Drain fuel						X
Pivot bar adjustment bolts				X		
Deck spindles				X		
Spindle belt idler arm				X		
Lubricate all foot and lift control pivot points		X				



Maintenance information for optional equipment may be found in the manual which is included with that specific piece of equipment.

Table 3-4. Model 2135 Lubrication

Point of Lubrication	Check at Hours	Change at Hours	Capacity	Anticipated Air Temperature	
				Above + 32°F	Below + 32°F
Engine crankcase	Check before each use	100	Approx. 4 pints	<i>Cub Cadet</i> Engine Oil SAE 10W30 or 10W40	<i>Cub Cadet</i> Engine Oil SAE 5W20 or 5W30
Hydro transmission and transaxle with filter	Check before each use	Add as needed	Approx. 6 qts.	<i>Cub Cadet</i> Drive System Oil NOTE: <i>Cub Cadet</i> Drive System Oil is specially formulated for this application. If any other oil is used <i>Cub Cadet</i> will not be responsible for substandard performance. Failures due to use of improper fluid are not covered by warranty. For maximum protection, use <i>Cub Cadet</i> Drive System Oil.	
Steering knuckles and front axle pivot bolt	10			Use 251H EP grease or equivalent No. 2 multi-purpose lithium grease and apply two strokes (minimum) or sufficient grease to flush out old grease and dirt.	
Front wheel bearings	30			Two strokes (minimum) of the lubricator using 251H EP grease or equivalent No. 2 multi-purpose lithium grease.	
Steering gear housing	30			Two strokes (minimum) of the lubricator using 251H EP grease or equivalent No. 2 multi-purpose lithium grease.	
Deck spindles	50			Two strokes (minimum) of the lubricator using 251H EP grease or equivalent No. 2 multi-purpose lithium grease.	
Spindle belt idler arm	50			Two strokes (minimum) of the lubricator using 251H EP grease or equivalent No. 2 multi-purpose lithium grease.	
Foot and lift control pivot points	10			Use a liberal amount of high grade lubricating oil.	