

# L160, L170 REPAIR MANUAL

## COMPLETE CONTENTS

SECTION 00 - GENERAL INFORMATION.....	3
SECTION 10 - ENGINE.....	4
SECTION 27 - REAR DRIVE AXLE (GEARBOXES).....	6
SECTION 29 - HYDROSTATIC TRANSMISSION.....	6
SECTION 33 - BRAKES AND CONTROLS.....	8
SECTION 35 - HYDRAULIC SYSTEM.....	9
SECTION 37 - TOWING HOOKS AND BALLASTING.....	11
SECTION 39 - FRAMES.....	11
SECTION 44 - AXLES AND WHEELS.....	12
SECTION 50 - CAB CLIMATE CONTROL.....	12
SECTION 55 - ELECTRICAL SYSTEM.....	13
SECTION 82 - FRONT LOADER (BOOM AND MOUNTING PLATE).....	15
SECTION 88 - ACCESSORIES.....	16
SECTION 90 - PLATFORMS, CAB, BODYWORK, AND DECALS.....	17

The following pages are the collation of the contents pages from each section and chapter of the L160, L170 Repair Manual. Complete Repair Manual part # 87634733.

The sections used through out all New Holland product Repair Manuals may not be used for each product. Each Repair Manual will be made up of one or several books.

Each book will be labeled as to which sections are in the overall Repair Manual and the sections that each book contains.

The sections listed above are the sections utilized for the L160, L170 Skid Steer.

Product: New Holland L160/L170 Skid Steer Loader Service Repair Manual

Full Download: <https://www.arepairmanual.com/downloads/new-holland-l160-l170-skid-steer-loader-service-repair-manual/>

---

Sample of manual. Download All 923 pages at:

<https://www.arepairmanual.com/downloads/new-holland-l160-l170-skid-steer-loader-service-repair-manual/>

---

## SECTION 00 – GENERAL INFORMATION

BOOK 1 - 87634735

### CONTENTS

Section	Description	Page
	Introduction .....	00-2
	About Improvements .....	00-2
	Company Policy .....	00-3
	Parts and Accessories .....	00-3
	Model Codes .....	00-3
	Precautionary Statements .....	00-4
	Safety Precaution Information .....	00-5
	General Safety Information .....	00-7
	Machine Model and Serial Number Location .....	00-9
	Engine Model and Serial Number Location .....	00-9
	Hardware Torque Specifications .....	00-10
	Installation of Adjustable Fittings in Straight Thread O Ring Bosses .....	00-12
	Standard Torque Data for Hydraulic Tubes and Fittings .....	00-12
	Pipe Thread Fitting Torque .....	00-13
	Lubricants and Coolants .....	00-13
	Sealants .....	00-13
	Properly Support a Raised Machine .....	00-14
	Properly Support Boom on Boom Lock Pins .....	00-14
	Raising Boom Without Hydraulic Oil Flow .....	00-14
	Raising Boom Without Battery Voltage (12V) .....	00-16
	Reattaching Cylinders After Repair with Boom Resting on Boom Lock Pins .....	00-17
	Major Unit Overhaul .....	00-18
	Cab and Boom Tilt Procedure .....	00-19
	Craning the Skid Steer .....	00-25
	Special Tools .....	00-28
	Specifications .....	00-29
	Dimensions .....	00-35
	Cab and Boom Tilt Procedure (Cab Upgrade Machines Only).....	00-37

---

## SECTION 10 – ENGINE

BOOK 1 - 87634735

### Chapter 1 – L160 - N844, L170 - N844T

#### CONTENTS

Section	Description	Page
10 000	General Engine Information . . . . .	10-3
	General Description . . . . .	10-3
	Engine Component Descriptions . . . . .	10-3
	Engine Model and Serial Number Location . . . . .	10-5
	Turbocharger Lubrication . . . . .	10-5
	Safety Precautions . . . . .	10-6
	General Engine Specifications . . . . .	10-7
	Troubleshooting . . . . .	10-11
	L170 - Excessive Oil Consumption . . . . .	10-15
	Specifications - Service Standards . . . . .	10-17
	Torque Specifications . . . . .	10-21
	Engine Components Electrical Diagram . . . . .	10-22
10 001 10	Engine Removal . . . . .	10-23
10 001 53	Engine Disassembly Sequence . . . . .	10-28
	Engine Component Maintenance . . . . .	10-36
10 101 55	Valve Seat . . . . .	10-39
10 101 56	Cylinder Block . . . . .	10-41
10 105 22	Piston and Piston Rings . . . . .	10-42
	Connecting Rod . . . . .	10-45
10 103 10	Bearing Holder . . . . .	10-47
	Front Crankshaft Bearing (Bushing) . . . . .	10-48
10 103 30	Crankshaft . . . . .	10-50
10 103 76	Flywheel and Ring Gear . . . . .	10-52
10 106 40	Camshaft Assembly . . . . .	10-52
10 106 66	Camshaft Gear and Bearing Assembly . . . . .	10-53
	Timing Gear . . . . .	10-54
10 304 41	Oil Pump . . . . .	10-54
10 304 10	Oil Filter . . . . .	10-55
10 402 28	Water Pump Assembly and Thermostat Housing . . . . .	10-55
10 402 30	Thermostat . . . . .	10-55
10 230 24	Governor . . . . .	10-57
	Governor Operation . . . . .	10-59

---

10 304 38	Engine Reassembly Sequence .....	10-61
	Crankshaft and Bearing Holder Assembly .....	10-62
	Rear Oil Seal .....	10-63
	Backplate/Flywheel Housing .....	10-63
	Flywheel .....	10-63
	Piston and Connecting Rod .....	10-64
	Oil Intake and Oil Strainer .....	10-64
	Oil Sump .....	10-64
	Dipstick and Tube .....	10-64
	Front Plate .....	10-64
	Idle Gear and Oil Pump Assembly .....	10-66
	Timing Gear Case Installation .....	10-66
	Crankshaft Pulley .....	10-66
	Injection Pump Installation .....	10-66
	Adjusting the Fuel Injection Timing .....	10-67
	Spill Timing Procedure .....	10-68
29 100 50	Reinstallation of Engine into Skid Steer Frame .....	10-75
	How to Operate the Engine After Overhaul .....	10-77
	Cooling System .....	10-78
	Cooling System Operation .....	10-78
	Water Pump Assembly and Thermostat Housing .....	10-79
	Radiator .....	10-80
	Fuel System .....	10-82
	Fuel Specifications .....	10-82
	Diesel Fuel .....	10-82
	Diesel Fuel Storage .....	10-82
	Fuel System Components .....	10-83
	Fuel Gauge .....	10-84
	Cold Start Aid .....	10-85
	Fuel Filter System .....	10-85
	Priming the Fuel System .....	10-86
	Fuel System Testing .....	10-87
	Fuel System Components .....	10-90
10 236 08	Fuel Injection Timing .....	10-96
	Turbocharger - L170 N844T Engine .....	10-101
10 250 30	Turbocharger Removal .....	10-103
	Miscellaneous Engine Electrical .....	10-116
10 223 10	Shut-off Solenoid .....	10-117
	Special Tools .....	10-119
	Labor Guide .....	10-120

---

## SECTION 27 – REAR DRIVE AXLE (GEARBOXES)

BOOK 2 - 87634738

### Chapter 1 – Gearboxes

#### CONTENTS

Section	Description	Page
27 000	General Information .....	27-2
	Specifications .....	27-4
	Troubleshooting .....	27-5
	Testing .....	27-7
27 126	Gearboxes .....	27-8
27 126 40	Gearbox Removal and Inspection .....	27-8
27 126 48	Gearbox Disassembly .....	27-12
	Gearbox Parts Inspection .....	27-13
	Gearbox Resassembly .....	27-14
27 126 40	Gearbox Reinstallation .....	27-16
	Labor Guide .....	27-19

## SECTION 29 - HYDROSTATIC TRANSMISSION

BOOK 2 - 87634738

### Chapter 1 - Neutralizer, Pumps, Motors

#### CONTENTS

Section	Description	Page
29 100	General Information .....	29-3
	Operation .....	29-3
	Specifications .....	29-5
29 100 01	Troubleshooting .....	29-6
	Hydrostatic Drive System Testing .....	29-8
	Hydrostatic System Oil Flow .....	29-11
	Hydrostatic Charge System Pressure Test .....	29-14
	Hydrostatic Pump Case Drain Test .....	29-15
	Hydrostatic Pump High Pressure Test .....	29-18

---

	Hydrostatic Pump Efficiency Test .....	29-20
	Hydrostatic Motor Case Drain Test .....	29-22
	Hydrostatic Motor Efficiency Test .....	29-23
	Hydraulic, Hydrostatic System Air Ingress Test .....	29-25
	Hydrostatic Pumps .....	29-27
29 100 40	Hydrostatic Pump Removal .....	29-27
29 100 46	Hydrostatic Pump Disassembly .....	29-31
	Hydrostatic Pump Parts Inspection .....	29-36
	Hydrostatic Pump Reassembly .....	29-41
	Hydraulic System Pump Installation (Without High Flow) .....	29-47
	Hydraulic System Pump/High Flow Pump Installation .....	29-49
	Hydrostatic Pump Reinstallation .....	29-54
	Hydrostatic Motor .....	29-58
29 100 60	Hydrostatic Motor Removal .....	29-58
29 100 66	Hydrostatic Motor Disassembly .....	29-62
	Hydrostatic Motor Parts Inspection .....	29-67
	Hydrostatic Motor Reassembly .....	29-70
	Hydrostatic Motor Reinstallation .....	29-79
	Hydraulic System Cleaning Procedure .....	29-85
	Start-up Procedure After Rebuild (After Pump or Motor Replacement) .....	29-88
	Charge Check Valve .....	29-90
29 100 36	Charge Check Valve Removal and Replacement .....	29-90
29 100	Steering System .....	29-91
	Hydrostatic System Controls .....	29-91
29 130 30	Neutralizer Assembly .....	29-93
	Left Control Handle With No Boom Hand Control .....	29-97
29 100 10	Left Control Handle With No Boom Hand Control Removal .....	29-97
29 100 10	Left Control Handle With No Boom Hand Control Disassembly .....	29-97
	Left Control Handle With No Boom Hand Control Inspection .....	29-98
	Left Control Handle With No Boom Hand Control Reassembly .....	29-98
	Left Control Handle With No Boom Hand Control Reinstallation .....	29-98
29 100 11	Left Control Handle With Boom Hand Control .....	29-100
	Left Control Handle With Boom Hand Control Removal .....	29-100
29 100 10	Left Control Handle With Boom Hand Control Disassembly .....	29-101
	Left Control Handle With Boom Hand Control Inspection .....	29-102
	Left Control Handle With Boom Hand Control Reassembly .....	29-103
	Left Control Handle With Boom Hand Control Reinstallation .....	29-104
	Right Control Handle With Auxiliary or Bucket Control .....	29-106
29 100 15	Right Control Handle With Auxiliary or Bucket Control Removal .....	29-106

29 100 15	Right Control Handle With Auxiliary or Bucket Control Disassembly.....	29-107
	Right Control Handle With Auxiliary or Bucket Control Inspection.....	29-109
	Right Control Handle With Auxiliary or Bucket Control Reassembly.....	29-110
	Right Control Handle With Auxiliary or Bucket Control Reinstallation.....	29-113
29 130 06	Drive Control Adjustment Procedure.....	29-115
29 130 06	Neutral Adjustment.....	29-116
	Labor Guide.....	29-118
	Machines Equipped With ISO Pattern Pilot Controls.....	29-121
	Pilot Control Travel System Overview.....	29-121
	Specifications.....	29-142
	Troubleshooting.....	29-143
	Check 1 - Checking the DA Pressure.....	29-144
	Check 2 - Checking Charge Pressure/Flow.....	29-146
	Check 3 - Checking Circuit Relief Valve Pressure.....	29-147
	Pump Adjustments.....	29-148
	Pump Removal.....	29-149
	Pump Installation.....	29-153
	Pump Disassembly.....	29-156
	Pump Assembly.....	29-173
	Pilot Control Travel Lever Removal.....	29-189
	Pilot Control Travel Lever Installation.....	29-193
	Illustration - Hydrostatic System (Machines Equipped With Pilot Controls).....	29-195
	Procedure to Bleed Air From the Pilot Control Hydraulic System.....	29-196

## SECTION 33 - BRAKES AND CONTROLS

### BOOK 2 - 87634738

#### Chapter 1 - Parking Brake

##### Contents

Section	Description	Page
33 000	General Information.....	33-2
	Specifications.....	33-4
	Troubleshooting.....	33-5
	Testing.....	33-7
33 110	Parking Brake.....	33-8
	Parking Brake Removal and Installation.....	33-9
	Labor Guide.....	33-22



# SECTION 35 - HYDRAULIC SYSTEM

BOOK -3 - 87634740

## Chapter 1 - Valves, Gear Pump, Cylinders, and Pedal Controls

### Contents

Section	Description	Page
35 000 -		
	General Information.....	35-3
	Hydraulic System Compatibility.....	35-4
	Boom Cylinder Pivot Pins.....	35-6
	Boom Cylinder Pivot Pin Location and Machine Usage.....	35-6
	Control Valve Power Beyond.....	35-7
	Specifications.....	35-8
	Troubleshooting.....	35-12
	Auxiliary Boom Hydraulics Troubleshooting.....	35-16
	Hydraulic System Testing.....	35-18
	Hydraulic System Oil Flow.....	35-24
	Control Valve - Bucket Spool Shifted.....	35-25
	Control Valve - Boom Spool Shifted.....	35-26
	Control Valve - Auxiliary Spool Shifted.....	35-27
35 710 02		
	Main System Pressure Tests.....	35-28
	Checking Main System Pressure at Boom Cylinders.....	35-30
	Checking Main System Pressure at Bucket Cylinders.....	35-31
	Checking Main System Pressure at Auxiliary Boom Hydraulic Quick Couplers.....	35-32
	Boom Circuit Relief Valve Test.....	35-33
	Gear Pump Flow Efficiency Test.....	35-35
	Boom and Bucket Spool Lock Solenoid Test.....	35-39
	Hydraulic, Hydrostatic System Air Ingress Test.....	35-41
	Control Valve Specifications.....	35-43
35 724 50		
	Control Valve Removal.....	35-44
	Control Valve Disassembly and Inspection.....	35-45
	Control Valve Parts Inspection.....	35-49
	Control Valve Reassembly.....	35-50
	Control Valve Reinstallation.....	35-53
	Hydraulic Pump Specifications.....	35-54
35 710 10		
	Hydraulic Pump Removal.....	35-55
35 710 20		
	Hydraulic Pump Removal/Disassembly (Without High Flow).....	35-56
	High Flow Pump Parts Inspection.....	35-58
	Hydraulic Pump Parts Inspection.....	35-59
	Hydraulic Pump Reassembly/Installation (Without High Flow).....	35-61
	Hydraulic Pump and High Flow Pump Reassembly/Installation.....	35-64
	New Hydraulic Pump Installation (Without High Flow).....	35-70
	New Hydraulic Pump/High Flow Pump Installation.....	35-72
	Gear Pump Start-up Procedure.....	35-78
	Cylinders, Boom and Bucket.....	35-79
35 710 10		
	Boom Cylinder Removal.....	35-81
35 730 18		
	Boom Cylinder Disassembly.....	35-83
	Boom Cylinder Parts Inspection.....	35-84
	Boom Cylinder Reassembly.....	35-85
	Boom Cylinder Reinstallation.....	35-87

35 730 10	Bucket Cylinder Removal.....	35-87
35 730 13	Bucket Cylinder Disassembly.....	35-88
	Bucket Cylinder Parts Inspection.....	35-89
	Bucket Cylinder Reassembly.....	35-90
	Bucket Cylinder Reinstallation.....	35-92
	Pedal Controls.....	35-93
35 724 16	Pedal Removal (With Boom and Bucket Pedal Controls).....	35-93
	Pedal Inspection (With Boom and Bucket Pedal Controls.....	35-93
	Pedal Reinstallation (With Boom and Bucket Pedal Controls.....	35-95
35 724 16	Pedal Removal (With Boom and Bucket Hand Controls.....	35-98
	Pedal Inspection (With Boom and Bucket Hand Controls.....	35-99
	Pedal Reinstallation (With Boom and Bucket Hand Controls.....	35-100
35 300	Hydraulic Cooling, Filter, Reservoir System.....	35-103
	Filter System.....	35-104
	Filter Removal.....	35-104
35 705 05	Base Removal.....	35-104
	Reassembly.....	35-105
	Oil Cooler.....	35-105
35 300 10	Oil Cooler Removal.....	35-105
	Oil Cooler Reassembly.....	35-106
35 300	Oil Reservoir.....	35-106
35 300 10	Oil Reservoir Removal.....	35-107
	Oil Reservoir Reinstallation.....	35-108
	Adapting Attachments.....	35-109
	Labor Guide.....	35-110
<b>Machines Equipped With Pilot Controls</b>		
	Specifications.....	35-111
	Loader Function Troubleshooting.....	35-112
	Pilot Pressure Test.....	35-113
	Illustration - Loader Control.....	35-114
	Right Control Handle - Removal.....	35-115
	Right Control Handle - Installation.....	35-118
	Hydraulic Schematic - Frame 3 - (Mechanical Control Machines).....	35-120
	Hydraulic Schematic - Frame 4- (Mechanical Control Machines).....	35-121
	Hydraulic Schematic - Frame 5- (Pilot Control Machines).....	35-122
	Hydraulic Schematic - Frame 6- (Pilot Control Machines).....	35-123
	Hydraulic Schematic - Frame 7- (Pilot Control Machines).....	35-124
	Hydraulic Schematic - Frame 8- (Pilot Control Machines).....	35-125
	Hydraulic Schematic - Frame 9- (Pilot Control Machines).....	35-126

---

## SECTION 37 – TOWING HOOKS AND BALLASTING

BOOK 3 - 87634740

### Chapter 1 – Rear Counterweights

#### CONTENTS

Section	Description	Page
37 140 10	Rear Counterweights .....	37-2
37 140 12	Rear Counterweight Support Removal .....	37-2

## SECTION 39 – FRAMES

BOOK 3 - 87634740

### Chapter 1 – Lower Main, ROPS

#### CONTENTS

Section	Description	Page
	General Information .....	39-2
	ROPS .....	39-2
	ROPS Frame .....	39-2
90 152 46	ROPS Removal .....	39-2
	ROPS Reinstallation .....	39-8
	Labor Guide .....	39-11
	ROPS Removal (Cab Upgrade Machines Only).....	39-12
	ROPS Installation (Cab Upgrade Machines Only).....	39-24

---

## SECTION 44 – AXLES AND WHEELS

BOOK 3 - 87634740

### Chapter 1 – Axles

#### CONTENTS

Section	Description	Page
44 100	General Information .....	44-2
	Specifications .....	44-4
	Troubleshooting .....	44-5
	Testing .....	44-7
44 106	Axles .....	44-8
44 106 10	Axle Housing Assembly Removal .....	44-8
44 106 16	Axle Disassembly .....	44-9
	Axle Parts Inspection .....	44-11
	Axle Reassembly .....	44-12
	Axle Housing Reinstallation .....	44-14
	Final Drive .....	44-15
44 106 48	Drive Chain and Sprocket Removal .....	44-15
	Final Drive Parts Inspection .....	44-19
	Final Drive Reassembly .....	44-20
44 511	Tires/Wheels .....	44-22
	Tire and Track Installation .....	44-23
	Labor Guide .....	44-24

---

**SECTION 50 - CAB CLIMATE CONTROL**  
**CHAPTER 1 - HEATER/DEF ROSTER/AIR CONDITIONER**  
Book 3 - 87634740  
**CONTENTS**

Section	Description	Page
50 100	Heater/Defroster (Cab).....	50-2
	Labor Guide.....	50-8
	Air Conditioning System Special Tools.....	50-9
	Air Conditioning System General Specifications.....	50-11
	Air Conditioning System Discharging and Evacuate and Recovery.....	50-13
	Air Conditioning System Charging.....	50-19
	Compressor Removal.....	50-21
	Compressor Installation.....	50-23
	Compressor Oil Level Check.....	50-25
	Compressor Belt Measure and Tension Adjust.....	50-28
	Compressor Magnetic Clutch Disassemble.....	50-29
	Compressor Magnetic Clutch Assembly.....	50-37
	Air Conditioning System Removal.....	50-43
	Air Conditioning System Installation.....	50-45
	Air Conditioning System Condenser Removal.....	50-46
	Air Conditioning System Condenser Installation.....	50-47
	Air Conditioning System Evaporator Removal.....	50-48
	Air Conditioning System Evaporator Installation.....	50-49
	Receiver/Drier Removal and Installation.....	50-51
	Air Conditioning System Visual Inspection and Troubleshooting.....	50-53
	Air Conditioning System Testing.....	50-54
	Air Conditioning System Leakage Test.....	50-55
	Air Conditioning System Problem Solving.....	50-56
	Air Conditioning System Problem Solving.....	50-57

---

## SECTION 55 - ELECTRICAL SYSTEM

### Chapter 1 - Instrument Cluster, Circuits, Alternator, and Starter Book 4 - 87634741

#### Contents

Section	Description	Page
55 000	General Electrical Information . . . . .	55- 4
	Definition of Terms . . . . .	55-5
	Adapting Attachments Requiring 12V Electrical Power. . . . .	55-7
	Specifications . . . . .	55-8
	Wire Identification and Circuit Diagram Legend . . . . .	55-12
	Electrical Diagram - Starting System. . . . .	55-13
	Electrical Diagram - Power Distribution . . . . .	55-14
	Electrical Diagram -Safety Interlock and Fuel Supply System . . . . .	55-15
	Electrical Diagram - Instrument Cluster Monitoring System . . . . .	55-16
	Electrical Diagram - Standard Lamps . . . . .	55-17
	Electrical Diagram - Loader Arm Auxiliary Electrical Control Box (Optional). . . . .	55-18
	Electrical Diagram - Loader Arm Auxiliary Electric Power Controls (Optional) . . . . .	55-19
	Electrical Diagram - Flasher and Turn Signals North America Electrical . . . . .	55-20
	Electrical Diagram - Main Electrical European On-Road Regulations. . . . .	55-21
	Electrical Diagram - Boom/Rear Electrical European On-Road Regulations . . . . .	55-22
	Electrical Diagram - Right-Hand Handle (Option) Electrical Multifunction Adaptation. . . . .	55-23
	Electrical Diagram - Left-Hand Handle (Options) . . . . .	55-24
	Electrical Diagram - Right-Hand Handle (Options) . . . . .	55-25
	Electrical Diagram - Glow Plugs . . . . .	55-26
	Electrical Diagram - Rotating Beacon (Optional). . . . .	55-27
	Electrical Diagram - Two Speed (Optional) . . . . .	55-28
	Electrical Diagram - Horn (Optional) . . . . .	55-29
	Electrical Diagram - Accessory Outlet (Optional) . . . . .	55-30
	Electrical Diagram - Back-up Alarm (Optional) . . . . .	55-31
	Electrical Diagram - Wiper/Washer (Optional). . . . .	55-32
	Electrical Diagram - Auxiliary Hydraulics (Optional) . . . . .	55-33
	Electrical Diagram - High Flow (Optional) . . . . .	55-34
	Electrical Diagram - Hydraulic Coupler (Optional). . . . .	55-35
	Electrical Diagram - Heating and Air Conditioning (Optional) . . . . .	55-36
	Electrical Diagram - Pilot Hydraulic Controls. . . . .	55-37
	Electrical Diagram - Ground Connections . . . . .	55-38
	Electrical Diagram - Ground Connections . . . . .	55-39
	Wire Identification and Circuit Diagram Legend (Cab Upgrade Machines). . . . .	55-40
	Electrical Diagram - Starting System (Cab Upgrade Machines) . . . . .	55-41
	Electrical Diagram - Power Distribution (Cab Upgrade Machines) . . . . .	55-42
	Electrical Diagram -Safety Interlock and Fuel Supply System (Cab Upgrade Machines) . . . . .	55-43
	Electrical Diagram - Instrument Cluster Monitoring System (Cab Upgrade Machines). . . . .	55-44
	Electrical Diagram - Standard Lamps (Cab Upgrade Machines). . . . .	55-45
	Electrical Diagram - Loader Arm Auxiliary Electrical Control Box (Optional) (Cab Upgrade Machines) . . . . .	55-46
	Electrical Diagram - Loader Arm Auxiliary Electric Power Controls (Optional) (Cab Upgrade Machines) . . . . .	55-47

## SECTION 55 - ELECTRICAL SYSTEM

	Electrical Diagram - Flasher and Turn Signals North America Electrical (Cab Upgrade Machines) . . . . .	55-48
	Electrical Diagram - Main Electrical European On-Road Regulations (Cab Upgrade Machines) . . . . .	55-49
	Electrical Diagram - Boom/Rear Electrical European On-Road Regulations (Cab Upgrade Machines) . . . . .	55-50
	Electrical Diagram - Work Lamps (Cab Upgrade Machines). . . . .	55-51
	Electrical Diagram - Control Lever Interface (Cab Upgrade Machines) . . . . .	55-52
	Electrical Diagram - Left-Hand Handle (Options) (Cab Upgrade Machines). . . . .	55-53
	Electrical Diagram - Right-Hand Handle (Options) (Cab Upgrade Machines). . . . .	55-54
	Electrical Diagram - Grid Heater System (Cab Upgrade Machines) . . . . .	55-55
	Electrical Diagram - Rotating Beacon (Optional) (Cab Upgrade Machines) . . . . .	55-56
	Electrical Diagram - Two Speed (Optional) (Cab Upgrade Machines) . . . . .	55-57
	Electrical Diagram - Horn (Optional) (Cab Upgrade Machines) . . . . .	55-58
	Electrical Diagram - Accessory Outlet (Optional) (Cab Upgrade Machines). . . . .	55-59
	Electrical Diagram - Back-up Alarm (Optional) (Cab Upgrade Machines). . . . .	55-60
	Electrical Diagram - Wiper/Washer/Door Switch (Optional) (Cab Upgrade Machines). . .	55-61
	Electrical Diagram - Auxiliary Hydraulics (Optional) (Cab Upgrade Machines). . . . .	55-62
	Electrical Diagram - High Flow (Optional) (Cab Upgrade Machines) . . . . .	55-63
	Electrical Diagram - Hydraulic Mount Plate (Optional) (Cab Upgrade Machines). . . . .	55-64
	Electrical Diagram - Heating and Air Conditioning (Optional) (Cab Upgrade Machines) .	55-65
	Electrical Diagram - Pilot Hydraulic Controls. . . . .	55-66
	Electrical Diagram - Ground Connections (Cab Upgrade Machines) . . . . .	55-67
	Electronic Instrument Cluster (EIC) Panel. . . . .	55-68
	Electronic Instrument Cluster (EIC) Panel (Cab Upgrade Machines) . . . . .	55-69
	Electronic Instrument Cluster Operating Instructions . . . . .	55-70
	Electronic Instrument Cluster Troubleshooting . . . . .	55-73
	Advanced Instrument Cluster (AIC) Panel (Optional) . . . . .	55-77
	Advanced Instrument Cluster (AIC) Panel (Optional) (Cab Upgrade Machines). . . . .	55-78
	Advanced Instrument Cluster Operating Instructions . . . . .	55-79
	Advanced Instrument Cluster Troubleshooting . . . . .	55-86
55 100	Removal, Installation and Wiring of Electrical Components . . . . .	55-90
55 301 40	Battery Removal and Installation. . . . .	55-91
	Cab Fuse Block and Panel Removal and Installation . . . . .	55-92
55 201 15	Seat Switch Removal . . . . .	55-93
	Seat Switch Installation . . . . .	55-94
55 201 14	Seat Belt Buckle and Switch Assembly Removal and Installation . . . . .	55-94
55 404 20	Road Light and Work Light Switch Removal and Installation . . . . .	55-95
	Engine Fuse and Relay Panel . . . . .	55-96
55 100 34	Start Interlock Relay Removal and Installation. . . . .	55-97
	Engine Fuse Block Removal and Installation . . . . .	55-98
55 100 34	Preheat Relay Removal and Installation . . . . .	55-99
55 201 76	Preheat Glow Plug Removal and Installation . . . . .	55-100
	Fuel System Components . . . . .	55-101
	Electric Fuel Pump . . . . .	55-102
10 210 21	Electric Fuel Pump Removal . . . . .	55-104

## SECTION 55 - ELECTRICAL SYSTEM

10 223	Fuel Shutoff Solenoid . . . . .	55-104
	Fuel Shutoff Solenoid Testing . . . . .	55-104
10 223 10	Replacement of Fuel Shutoff Solenoid . . . . .	55-105
55 414 14	Air Filter Restriction Indicator Switch Removal and Installation . . . . .	55-106
55 414 10	Engine Coolant Temperature Sender Removal and Installation . . . . .	55-106
55 414 12	Engine Oil Pressure Switch Removal and Installation . . . . .	55-107
55 414 28	Hydrostatic Charge Pressure Switch Removal and Installation . . . . .	55-107
55 414 24	Hydraulic Oil Filter Restriction Switch Removal and Installation . . . . .	55-108
55 414 20	Hydraulic Oil Temperature Sender Removal . . . . .	55-108
	Hydraulic Oil Temperature Sender Installation . . . . .	55-109
35 724 90	Boom/Bucket Control Valve Spool Lock Solenoid Removal and Installation . . . . .	55-110
55 404	Road/Work Lights . . . . .	55-111
55 301	Alternator (55 Amp Version) . . . . .	55-114
	Alternator Service Specifications . . . . .	55-116
	Alternator - System Testing and Troubleshooting . . . . .	55-117
	Initial Tests . . . . .	55-120
55 301 10	Alternator Removal . . . . .	55-125
55 301 12	Alternator Disassembly . . . . .	55-126
	Alternator Installation . . . . .	55-132
55 201	Starter . . . . .	55-133
	Starter Motor Troubleshooting . . . . .	55-134
55 201 50	Starter Motor Removal . . . . .	55-135
	Starter Motor Disassembly . . . . .	55-140
	Starter Motor Inspection and Repair . . . . .	55-144
	Starter Motor Reassembly . . . . .	55-150
	Starter Motor Installation . . . . .	55-153
	Miscellaneous Engine Components . . . . .	55-154
	Glow Plugs and Glow Plug Troubleshooting . . . . .	55-154
	Oil Pressure Switch . . . . .	55-155
	Fuel Shutoff Solenoid . . . . .	55-155
	Labor Guide . . . . .	55-156



---

## SECTION 82 – FRONT LOADER (BOOM AND MOUNTING PLATE)

BOOK 4 - 87634741

### Chapter 1 – Buckets

#### CONTENTS

Section	Description	Page
82 100	General Information .....	82-2
	Buckets .....	82-2
82 100 77	Boom Lock Pins and Linkage .....	82-3
	Boom .....	82-3
82 100 70	Attachment Mounting Plate .....	82-4
	Boom and Cylinder Pivot Pins .....	82-4
	Boom and Cylinder Pivot Pin Location and Machine Usage .....	82-4
	Boom and Cylinder Pivot Pins Size .....	82-5
82 100 30	Pallet Fork .....	82-6
82 100 20	Utility Fork .....	82-7
82 100 12	Bucket Cutting Edge (Replacement) .....	82-8
82 100	Bucket Latch Plate Installation Procedure .....	82-9
82 100	Dirt Tooth Kit Installation .....	82-11
	Bucket Tooth Spacing .....	82-13
	Boom Lock Pin/Linkage .....	82-15
82 100 77	Boom Lock Pin/Linkage Removal .....	82-15
	Boom Lock Pin/Linkage Reinstallation .....	82-16
	Boom, Upper and Lower Link .....	82-18
	Boom, Upper and Lower Link Removal .....	82-18
82 100 70	Front Boom Mounting Plate Pivot Hub Replacement .....	82-24
	Boom, Upper and Lower Link Reinstallation .....	82-25
	Attachment Mounting Plate .....	82-29
82 100 70	Attachment Mounting Plate Removal .....	82-29
	Repair/Rebuild Mounting Plate .....	82-30
82 100 74	Latch Lever and Pin Removal/Repair .....	82-30
	Attachment Mounting Plate Parts Inspection .....	82-32
	Checking Procedure for Buckets and Attachments .....	82-36
	Checking Procedure .....	82-38
	Checking the Loader Faceplate .....	82-39
	Labor Guide .....	82-41

---

## SECTION 88 – ACCESSORIES

BOOK 4 - 87634741

### Chapter 1 – Dealer Installed Options

#### CONTENTS

Section	Description	Page
88 100	General Information .....	88-2
	Adapting Attachments Requiring 12V Electrical Power .....	88-2
	Hydraulic System Compatibility .....	88-5
90 000	Arm Pads For Cab Side Panels .....	88-7
90 000	Armrests for Deluxe Seat .....	88-7
90 000	Forearm Rests .....	88-8
55 000	Back-up Alarm .....	88-9
10 300	Block Heater (Engine) .....	88-10
55 000	Electric Power Supply (12 Volt, 15 Amp) .....	88-11
10 254	Exhaust (Engine) .....	88-12
10 254	Aspirator Precleaner Muffler .....	88-12
35 000	High Flow Hydraulics .....	88-14
	High Flow Hydraulics Troubleshooting .....	88-16
	High Flow Hydraulics Component Replacement .....	88-18
55 000	Horn .....	88-25
90 000	Shoulder Belt (Seat) .....	88-26
88 000	Slow-moving Vehicle (SMV) Sign Kit .....	88-27
55 000	Warning Light (Rotary Beacon) .....	88-28
55 000	Warning Lights (Four-way Flashers/Turn Signal/Horn) .....	88-31
	Labor Guide .....	88-35

---

## SECTION 90 – PLATFORM, CAB, BODYWORK, AND DECALS

BOOK 4 - 87634741

### Chapter 1 – Cab and Seat

#### CONTENTS

Section	Description	Page
	General Information .....	90-2
	Seat and Seat Pan Support .....	90-2
90 152	Cab Inner Shell .....	90-3
90 120 10	Seat Removal .....	90-3
90 120 12	Seat Pan Support Removal .....	90-3
	Seat, Switch and Pan Reinstallation .....	90-5
	Cab Inner Shell .....	90-7
90 152 34	Cab Inner Shell Removal .....	90-7
90 152	Cab Inner Shell Reinstallation .....	90-14
90 108	Safety Decals .....	90-22
	Labor Guide .....	90-26

---

## NOTES

---

## SECTION 00 – GENERAL INFORMATION

### CONTENTS

Section	Description	Page
	Introduction .....	00-2
	About Improvements .....	00-2
	Company Policy .....	00-3
	Parts and Accessories .....	00-3
	Model Codes .....	00-3
	Precautionary Statements .....	00-4
	Safety Precaution Information .....	00-5
	General Safety Information .....	00-7
	Machine Model and Serial Number Location .....	00-9
	Engine Model and Serial Number Location .....	00-9
	Hardware Torque Specifications .....	00-10
	Installation of Adjustable Fittings in Straight Thread O Ring Bosses .....	00-12
	Standard Torque Data for Hydraulic Tubes and Fittings .....	00-12
	Pipe Thread Fitting Torque .....	00-13
	Lubricants and Coolants .....	00-13
	Sealants .....	00-13
	Properly Support a Raised Machine .....	00-14
	Properly Support Boom on Boom Lock Pins .....	00-14
	Raising Boom Without Hydraulic Oil Flow .....	00-14
	Raising Boom Without Battery Voltage (12V .....	00-16
	Reattaching Cylinders After Repair with Boom Resting on Boom Lock Pins .....	00-17
	Major Unit Overhaul .....	00-18
	Cab and Boom Tilt Procedure .....	00-19
	Craning the Skid Steer .....	00-25
	Special Tools .....	00-28
	Specifications .....	00-29
	Dimensions .....	00-35
	Cab and Boom Tilt Procedure (Cab Upgrade Machines Only).....	00-37

## INTRODUCTION

This service manual provides the technical information needed to properly service and maintain the Models L160 and L170 skid steers. Use it in conjunction with the operator's manual which is supplied with the skid steer. Keep both manuals available for ready reference.

The L160 and L170 have many similarities with the major differences being engine horsepower and lifting capacity.

Whenever working on New Holland equipment, left and right sides of the machine are determined by standing behind the unit, looking in the direction of travel.

The easiest and least time-consuming removal, disassembly, and reassembly procedures are detailed in the manual. Modifying these procedures is not recommended.

New Holland skid steers are designed with emphasis on safety for operator protection. However, careless and negligent operation can still result in serious injury to persons or damage to property. Be sure to read and follow all safety instructions in this manual.

Your New Holland dealer is interested in your obtaining the most from your investment and will be glad to answer any questions you may have about your skid steer. When major service is required, your dealer's staff of trained service technicians is ready to serve you.

When in need of parts, always order genuine New Holland service parts from your New Holland dealer. Be prepared to give your dealer the model and serial number of the engine and skid steer (the location of these numbers is described later in this section). Record the serial numbers here.

Skid Steer Model \_\_\_\_\_

Skid Steer Serial Number \_\_\_\_\_

Engine Model \_\_\_\_\_

Engine Serial Number \_\_\_\_\_



**This symbol is used throughout this book whenever your own personal safety is involved. Take time to be careful!**

---

## ABOUT IMPROVEMENTS

New Holland is continually striving to improve its products. We must, therefore, reserve the right to make improvements or changes when it becomes practical and possible to do so, without incurring any obligation to make changes or additions to the equipment sold previously.

ALL SPECIFICATIONS ARE SUBJECT TO CHANGE WITHOUT NOTICE.

### **COMPANY POLICY**

Company policy, which is one of continuous improvement, reserves the right to make changes in design and specifications at any time without notice and without obligation to modify units previously built.

All data given in this book is subject to production variations. Dimensions and weights are approximate only and the illustrations do not necessarily show skid steers in standard condition.

### **PARTS AND ACCESSORIES**

Genuine NEW HOLLAND parts and accessories have been specifically designed for NEW HOLLAND MACHINES.

We would like to point out that “NON-GENUINE” parts and accessories have not been examined and released by NEW HOLLAND. The installation and or use of such products could have negative effects upon the design characteristics of your machine and thereby affect its safety. NEW HOLLAND is not liable for any damage caused by the use of “NON-GENUINE” NEW HOLLAND parts and accessories.

### **MODEL CODES**

The range of Skid Steers described in this manual is identified in the text by the engine horsepower Pferdestärke. (PS). The skid steers listed below may not be available in all countries or markets.

ENGINE	PS	MODEL
N844	40	L160
N844T	50	L170

## PRECAUTIONARY STATEMENTS

### PERSONAL SAFETY

Throughout this manual and on machine decals, you will find precautionary statements (“**CAUTION**”, “**WARNING**”, and “**DANGER**”) followed by specific instructions. These precautions are intended for the personal safety of you and those working with you. Please take the time to read them.

---

### **CAUTION**

---

The word “**CAUTION**” is used where a safe behavioral practice according to operating and maintenance instructions and common safety practices will protect the operator and others from accident involvement.

---

---

### **WARNING**

---

The word “**WARNING**” denotes a potential or hidden hazard which has a potential for serious injury. It is used to warn operators and others to exercise every appropriate means to avoid a surprise involvement with machinery.

---

---

### **DANGER**

---

The word “**DANGER**” denotes a forbidden practice in connection with a serious hazard.

---

Failure to follow the “**CAUTION**”, “**WARNING**”, and “**DANGER**” instructions may result in serious bodily injury or death.

### MACHINE SAFETY

Additional precautionary statement (“**IMPORTANT**”) is followed by specific instructions. This statement is intended for machine safety.

***IMPORTANT:** The word “IMPORTANT” is used to inform the reader of something he needs to know to prevent minor machine damage if a certain procedure is not followed.*



**SAFETY PRECAUTIONS**

Unsafe operating practices and improper use of the skid steer and its attachments on the part of the operator can result in injuries. Observe the following safety precautions at all times:

1. For servicing, the skid steer should be on level terrain, engine stopped with the wheels blocked or the entire skid steer solidly supported with the wheels off the ground before servicing any component of the drivetrain.
2. For servicing under the operator's seat, raise the seat and pan assembly up to the raised latched position and securely latch.
3. Do not operate the skid steer unless the seat is latched in the operate position.
4. Do not service the skid steer with a raised boom unless the boom is resting on the boom lock pins.
5. Do not service the skid steer with the engine running unless the skid steer is properly and securely supported with all four wheels off the ground.
6. Use caution when servicing the unit around moving parts.
7. Do not tilt the boom and cab without proper instruction.
8. Do not tilt the boom and cab without using the proper cab tilting tool.
9. Reinstall all shields removed for service.
10. Never loosen any hydraulic connections before relieving the pressure in the hydraulic system.
11. Wear eye protection such as goggles, etc.
12. Wear ear protection such as ear plugs, etc. When you feel the noise level is uncomfortable.
13. If any servicing or adjustments require the battery to be disconnected, disconnect the (-) negative ground cable.
14. When servicing electrical components, disconnect the (-) negative ground cable.
15. If the electronic instrument cluster (eic) requires removal from the dash area or the skid steer, disconnect the (-) negative ground battery cable. This will shut off power to the eic and prevent damage to the eic board or blowing the 5-amp fuses if the board is accidentally grounded.
16. If welding is required on the skid steer, disconnect the (-) negative ground cable. failure to disconnect the battery may result in damage to the EIC (Electronic Instrument Cluster) monitoring system and other electrical components.
17. If welding is required on an attachment, remove the attachment from the skid steer.
18. Give complete and undivided attention to the job at hand so that complete control of the skid steer is maintained at all times.
19. Drive slowly over rough ground and on slopes; keep alert for holes, ditches and other irregularities that may cause the skid steer to overturn.
20. Avoid steep hillside operation which could cause the skid steer to overturn.
21. Never transport a loaded bucket at full height. Operate the skid steer with the load as low as possible until it becomes necessary to raise the boom to discharge the load into a truck, container, etc.
22. Reduce speed when turning so there is no danger of the skid steer overturning.
23. Never drive up or back up a hill or incline with a raised boom or the skid steer could overturn.
24. Always look behind you before backing the skid steer.
25. Maintain proper transmission oil level to prevent loss of hydrostatic braking.
26. Do not allow passengers to ride on the skid steer at any time.
27. Do not allow children to operate the skid steer or ride on the skid steer at any time.
28. Do not allow anyone to operate the skid steer without proper instruction. OSHA requires that all operators be instructed on the proper operation of the machine before they operate the unit.
29. Do not operate the skid steer in any position other than while in the operator's seat with the seat belt securely fastened.

30. Before starting the engine, be sure that all operating controls are in neutral and the parking brake is engaged.
31. Never operate the skid steer engine in a closed building without adequate ventilation.
32. Refuel the skid steer outdoors with the engine shut off. Replace the fuel cap securely. Use an approved fuel container. Do not smoke when handling fuel. Avoid spilling fuel.
33. After operating the engine, never touch the muffler, exhaust pipe, engine or radiator until they have had time to cool.
34. Dress appropriately - wear relatively tight-fitting clothing when operating the skid steer. Loose or torn clothing can catch in moving parts or controls.
35. Before servicing the skid steer or any of its attached equipment, be sure that the attachments are lowered to the ground or that the boom arms are supported by the boom lock pins.
36. Do not work under overhangs, electric wires, or where there is danger of a slide.
37. Wear an approved safety hat when operating the machine and while in any work area.
38. When driving the skid steer on a road or highway, use warning lights or warning devices as may be required by local or state government regulations. Headlights, warning lights and smv signs are available through your New Holland dealer.
39. Keep the skid steer clean. Do not allow trash, debris or other articles to accumulate in the cab, floor or foot control pedal area that may hinder safe machine operation.
40. Never operate the skid steer with any of the shielding removed.
41. Never operate the skid steer without windows and/or screens in place.
42. Never extend any part of the body outside of the operator's area.
43. Always properly tie down the skid steer to a truck or trailer before transport.
44. Make sure all bystanders are at a safe distance away from the skid steer before starting the engine.
45. Do not allow anyone near the skid steer while the engine is running and the skid steer is operational.
46. When using the skid steer to crane objects, do not allow any person to ride on objects being craned.
47. Do not use the skid steer as a work platform for supporting materials.
48. Do not lift personnel or allow personnel to work while standing in the bucket or on other attachments. This is not a man-lift.

OSHA requirements now make it the employer's responsibility to fully instruct each operator in the proper and safe operation of all operative equipment. Both employer and employee should thoroughly familiarize themselves with the following sections.



### CAUTION



Some pictures in this manual show safety shields removed or open to show parts being serviced or for clarity. All shields should be closed or replaced prior to operating the machine.



### DANGER



**Fasten seat belt before starting engine!**

This skid steer is a very stable unit but it can be upset if stopped suddenly when the bucket is raised and loaded.

Therefore, do not start the engine before securely fastening the seat belt, and carry the load low.

---

## GENERAL SAFETY INFORMATION

### HANDLE FLUIDS SAFELY

When you work around fuel or other flammable material, do not smoke, work near heaters or other fire hazards.

Do not store flammable material in open containers.

Store flammable fluids away from fire hazards.

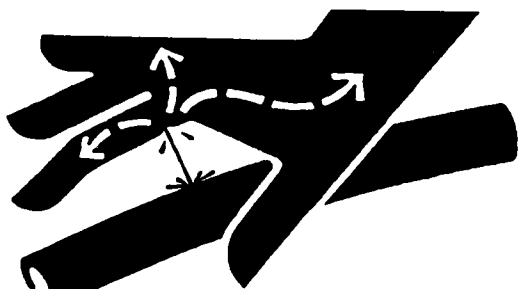
Do not incinerate or puncture pressurized containers.

Make sure machine is clean of trash, grease, oil, and debris.

Do not store oily rags; they can ignite and burn spontaneously.

Keep a first aid kit and fire extinguisher handy.

Keep emergency numbers for doctors, ambulance service, hospital, and fire department near your telephone.



### USE CARE AROUND HIGH-PRESSURE FLUID LINES

Escaping fluid under pressure can penetrate the skin causing serious injury.

Avoid the hazard by relieving pressure before disconnecting hydraulic or other lines.

Tighten all line connections before applying pressure.

Check for leaks with a piece of cardboard.

Protect hands and body from high-pressure fluids.

If an accident occurs, see a doctor immediately. Any fluid injected into the skin must be surgically removed within a few hours or gangrene may result. Doctors unfamiliar with this type of injury should reference a knowledgeable medical source.

### AVOID HEATING NEAR PRESSURIZED FLUID LINES

Flammable spray can be generated by heating near pressurized fluid lines, resulting in severe burns to yourself and bystanders.

Do not heat by welding, soldering, or using a torch near pressurized fluid lines.

Pressurized lines can be accidentally cut or damaged when heat goes beyond the immediate flame area.

### USE CARE IN HANDLING AND SERVICING BATTERIES

#### Prevent Battery Explosions

Keep sparks, lighted matches, and open flame away from the top of the battery. Battery gas can explode.

Never check battery charge by placing a metal object across the posts. Use a voltmeter or hydrometer.

Do not charge a frozen battery; it may explode. Warm the battery to 60° F (16° C).



**WARNING**



If any servicing or adjustments require the battery to be disconnected, or welding is required on the skid steer, disconnect the (–) negative ground cable. Failure to disconnect the battery may result in damage to the eic (electronic instrument cluster) monitoring system and other electrical components.



**WARNING**



If welding on an attachment is required, first remove the attachment from the skid steer boom attaching plate.

**WARNING**

**Engine starting with a booster battery requires extreme care as batteries produce explosive gases. The slightest spark can cause an explosion.**

**Follow these safety tips:**

1. **Always shield your eyes when charging or working near a battery. Always provide good ventilation.**
2. **Cover the battery with a piece of carpet or other heavy material. Do not remove the battery vent caps.**
3. **Connect one cable to the (+) positive terminal of the weak battery. Connect the other end of the cable to the (+) positive terminal of the stronger battery.**
4. **Connect the second cable to the (–) negative terminal of the stronger battery.**
5. **Connect the remaining (–) negative cable end to the engine block or starter ground terminal.**
6. **Reverse this procedure when disconnecting the booster.**

**USE SAFE SERVICE PROCEDURES****Wear Protective Clothing**

Do not wear loose clothing.

Wear close-fitting clothing.

Wear safety glasses or face shield as required.

Wear other safety equipment appropriate to the job.

Wear earplugs or earmuffs as required.

**SERVICE MACHINES SAFELY**

Use caution when working around moving parts.

If servicing requires the boom to be in the raised position, support the boom on the boom locks and remove any attachment from the boom mounting

plate. If servicing requires the complete skid steer to be in the supported position, support all four wheels off the ground using adequate jack stands or blocks.

If servicing requires the engine to be operated, raise the machine and properly support the unit with adequate jack stands or blocking with all four wheels off the ground.

**CAUTION**

**Before servicing the skid steer or any of its attached equipment, be sure that the attachments are lowered to the ground or the boom arms are supported by the boom lock pins.**

**USE PROPER TOOLS**

Use tools appropriate for the job.

If tilting of the cab is required, use the proper tools and follow the procedure for tilting the cab in Section 1 of this manual.

**REVIEW SAFETY EQUIPMENT, SIGNS AND SHIELDS**

Replace missing or damaged safety decals.

Reinstall all shielding removed for servicing.

Replace any damaged or missing shielding.

**CONTROLS**

Operate unit and check machine functions for proper operation.

Check seat belt for proper operation, wear, and damage - Replace as needed.

Check operator restraint system - EIC for proper operation.

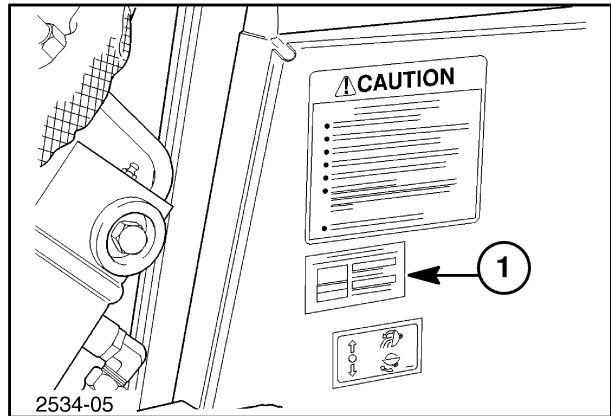
Check boom and bucket spool locks for proper operation.

Check mechanical boom locks for proper operation.

Check parking brake for proper operation and adjustment.

## MACHINE MODEL AND SERIAL NUMBER LOCATION

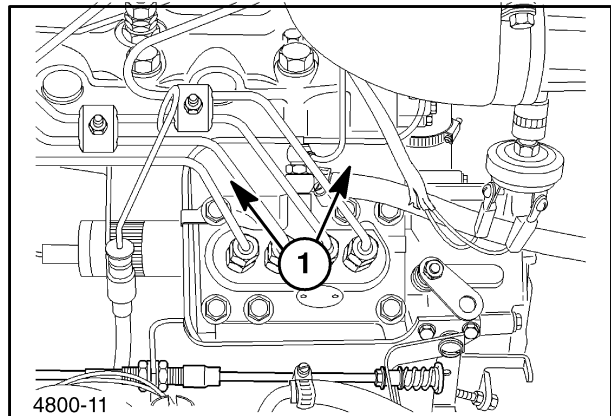
The skid steer model and serial number tag is located on the right front interior of the operator's cab at 1.



1

## ENGINE MODEL AND SERIAL NUMBER LOCATION

The engine model and serial number is located on the left side of the block at 1.



2

For the tightening torques for reassembly, use the following hardware torque chart unless the torque is specified in the instructions.

# MINIMUM HARDWARE TIGHTENING TORQUES

IN FOOT POUNDS (NEWTON-METERS) FOR NORMAL ASSEMBLY APPLICATIONS

## INCH HARDWARE AND LOCKNUTS

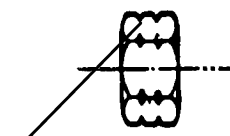
NOMINAL SIZE	SAE GRADE 2		SAE GRADE 5		SAE GRADE 8		LOCKNUTS		NOMINAL SIZE
	UNPLATED or PLATED SILVER	PLATED W/ZnCr GOLD	UNPLATED or PLATED SILVER	PLATED W/ZnCr GOLD	UNPLATED or PLATED SILVER	PLATED W/ZnCr GOLD	GR.B w/GR5 BOLT	GR.C w/GR8 BOLT	
1/4	55* (6.2)	72* (8.1)	86* (9.7)	112* (13)	121* (14)	157* (18)	61* (6.9)	86* (9.8)	1/4
5/16	115* (13)	149* (17)	178* (20)	229* (26)	250* (28)	324* (37)	125* (14)	176* (20)	5/16
3/8	17 (23)	22 (30)	26 (35)	34 (46)	37 (50)	48 (65)	19 (26)	26 (35)	3/8
7/16	27 (37)	35 (47)	42 (57)	54 (73)	59 (80)	77 (104)	30 (41)	42 (57)	7/16
1/2	42 (57)	54 (73)	64 (87)	83 (113)	91 (123)	117 (159)	45 (61)	64 (88)	1/2
9/16	60 (81)	77 (104)	92 (125)	120 (163)	130 (176)	169 (229)	65 (88)	92 (125)	9/16
5/8	83 (112)	107 (145)	128 (174)	165 (224)	180 (244)	233 (316)	90 (122)	127 (172)	5/8
3/4	146 (198)	189 (256)	226 (306)	293 (397)	319 (432)	413 (560)	160 (217)	226 (306)	3/4
7/8	142 (193)	183 (248)	365 (495)	473 (641)	515 (698)	667 (904)	258 (350)	364 (494)	7/8
1	213 (289)	275 (373)	547 (742)	708 (960)	773 (1048)	1000 (1356)	386 (523)	545 (739)	1

NOTE: Torque values shown with \* are inch pounds.

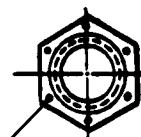
## IDENTIFICATION CAP SCREWS AND CARRIAGE BOLTS



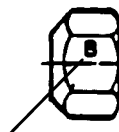
## LOCKNUTS



GRADE IDENTIFICATION  
 GRADE A NO NOTCHES  
 GRADE B ONE CIRCUMFERENTIAL NOTCH  
 GRADE C TWO CIRCUMFERENTIAL NOTCHES



GRADE IDENTIFICATION  
 GRADE A NO MARKS  
 GRADE B THREE MARKS  
 GRADE C SIX MARKS  
 MARKS NEED NOT BE LOCATED AT CORNERS



GRADE IDENTIFICATION

GRADE A NO MARKS  
 GRADE B LETTER B  
 GRADE C LETTER C