

# SERVICE MANUAL

**Guardian SP.240R**

**Guardian SP.275R**

Sprayer

**Part number 47377943**

1st edition English

April 2012

Service Manual. Download All 555 pages at:

<https://www.arepairmanual.com/downloads/new-holland-guardian-sp-240r-sp-275r-sprayer-service-repair-manual/>



## INTRODUCTION

Engine.....	10
Engine and crankcase.....	10.001
Air cleaners and lines.....	10.202
Fuel filters .....	10.206
Lift pump and lines .....	10.210
Fuel tanks .....	10.216
Intake and exhaust manifolds and muffler.....	10.254
Engine cooling system .....	10.400
Fan and drive.....	10.414
Transmission.....	21
Power Shuttle transmission .....	21.112
Gearbox internal components .....	21.145
Drop box.....	21.200
Front axle system .....	25
Non-powered front axle.....	25.400
Rear axle system.....	27
Powered rear axle .....	27.100
Rear bevel gear set and differential .....	27.106
Brakes and controls .....	33
Hydraulic service brakes .....	33.202
Hydraulic systems.....	35
Hydraulic systems .....	35.000
Variable displacement pump .....	35.106
Reservoir, cooler, and filters.....	35.300
Main control valve .....	35.359
Pneumatic system .....	36

Sample of manual. Download All 555 pages at:

<https://www.arepairmanual.com/downloads/new-holland-guardian-sp-240r-sp-275r-sprayer-service-repair-manual/>

Pneumatic system .....	36.100
Pneumatic operated components .....	36.200
<b>Frames and ballasting .....</b>	<b>39</b>
Frame.....	39.100
<b>Steering.....</b>	<b>41</b>
Hydraulic control components .....	41.200
Pump .....	41.206
Cylinders .....	41.216
<b>Wheels.....</b>	<b>44</b>
Front wheels.....	44.511
Rear wheels .....	44.520
<b>Cab climate control .....</b>	<b>50</b>
Heating .....	50.100
Ventilation .....	50.104
Air conditioning .....	50.200
<b>Electrical systems .....</b>	<b>55</b>
Engine control system .....	55.015
Heating, Ventilation, and Air-Conditioning (HVAC) control system.....	55.050
Engine starting system .....	55.201
Alternator .....	55.301
Battery .....	55.302
Cab sprayer controls .....	55.521
Wiper/Washer system .....	55.518
<b>Spraying .....</b>	<b>78</b>
Chemical spraying.....	78.110
Spraying pump .....	78.111
Foam marking system .....	78.120
<b>Accessories .....</b>	<b>88</b>

Accessories.....	88.100
<b>Platform, cab, bodywork, and decals.....</b>	<b>90</b>
Machine shields and guards.....	90.105
Protections and footboards.....	90.118
Pneumatically-adjusted operator seat.....	90.124
Cab.....	90.150
Cab interior.....	90.151
Cab interior trim and panels.....	90.160



# INTRODUCTION

# Contents

---

## INTRODUCTION

Personal safety .....	3
Safety rules .....	4
Safety rules .....	5
Basic instructions - Shop and assembly .....	6
Torque - Minimum tightening torques for normal assembly .....	8
Definition - Important notice regarding equipment servicing .....	13

## Personal safety

### **⚠ WARNING**

**Maintenance hazard!**

**Before you start servicing the machine, attach a DO NOT OPERATE warning tag to the machine in a visible area.**

**Failure to comply could result in death or serious injury.**

W0004A

Attach a DO NOT OPERATE (TAG) to the machine in an area that is clearly visible whenever the machine is not operating properly and/or requires service.

Complete the tag information for the "REASON" the tag is attached by describing the malfunction or service required. Validate the reason for attaching the tag by signing your name in the designated area on the tag.

The tag should only be removed by the person who signed and attached the tag, after validating the repairs or services have been completed.

	⊕	⊕	
(A)	<div style="background-color: black; color: white; padding: 10px; margin: 10px auto; width: 150px;"> <b>DO NOT REMOVE THIS TAG!</b> </div>	<div style="background-color: black; color: white; padding: 10px; margin: 10px auto; width: 150px;"> <b>DO NOT OPERATE</b> </div>	(D)
(B)	<p>See Other Side</p> 	<p>REASON</p> <hr/> <hr/> <hr/> <hr/> <hr/> <hr/> <hr/>	(E)
(C)	<p>CNH Part Number 87358697</p> <p>Printed in U.S.A.</p>	<p>Signed by</p> <hr/>	(F)
87358697 1			

### Tag Components

- A. DO NOT REMOVE THIS TAG! - (Warning) The tag should only be removed by the person who signed and attached the tag, after validating the repairs or services have been completed.
- B. See Other Side - (Reference to additional information on opposite side of the tag.)
- C. CNH Part Number - (Request this part number from you Service Parts Dealer to obtain this DO NOT OPERATE tag.)
- D. DO NOT OPERATE - (Warning!)
- E. REASON - (Area for describing malfunction or service required before operation.)
- F. Signed by - (Signature area - to be signed by the person validating the reason for installation of the tag.)

---

## Safety rules


### Personal safety





This is the safety alert symbol. It is used to alert you to potential personal injury hazards. Obey all safety messages that follow this symbol to avoid possible death or injury.

Throughout this manual and on machine decals, you will find the signal words DANGER, WARNING, and CAUTION followed by special instructions. These precautions are intended for the personal safety of you and those working with you.

Read and understand all the safety messages in this manual before you operate or service the machine.

 **DANGER** indicates a hazardous situation which, if not avoided, will result in death or serious injury. The color associated with DANGER is RED.

 **WARNING** indicates a hazardous situation which, if not avoided, could result in death or serious injury. The color associated with WARNING is ORANGE.

 **CAUTION**, used with the safety alert symbol, indicates a hazardous situation which, if not avoided, could result in minor or moderate injury. The color associated with CAUTION is YELLOW.

### **FAILURE TO FOLLOW DANGER, WARNING, AND CAUTION MESSAGES COULD RESULT IN DEATH OR SERIOUS INJURY.**

### Machine safety

**NOTICE:** Notice indicates a situation which, if not avoided, could result in machine or property damage. The color associated with Notice is BLUE.

Throughout this manual you will find the signal word Notice followed by special instructions to prevent machine or property damage. The word Notice is used to address practices not related to personal safety.

### Information

**NOTE:** Note indicates additional information which clarifies steps, procedures, or other information in this manual.

Throughout this manual you will find the word Note followed by additional information about a step, procedure, or other information in the manual. The word Note is not intended to address personal safety or property damage.



## Safety rules

### **CALIFORNIA PROPOSITION 65 WARNING**

Diesel engine exhaust and some of its constituents are known to the State of California to cause cancer, birth defects, and other reproductive harm.

Battery post, terminals and related accessories contain lead and lead compounds.

**Wash hands after handling**

BT09A213 1

---

## Basic instructions - Shop and assembly

### Shimming

For each adjustment operation, select adjusting shims and measure individually using a micrometer, then add up the recorded values. Do not rely on measuring the entire shimming set, which may be incorrect, or the rated value indicated on each shim.

### Rotating shaft seals

For correct rotating shaft seal installation, proceed as follows:

- Before assembly, allow the seal to soak in the oil it will be sealing for at least thirty minutes.
- Thoroughly clean the shaft and check that the working surface on the shaft is not damaged.
- Position the sealing lip facing the fluid; with hydrodynamic lips, take into consideration the shaft rotation direction and position the grooves so that they will deviate the fluid towards the inner side of the seal.
- Coat the sealing lip with a thin layer of lubricant (use oil rather than grease) and fill the gap between the sealing lip and the dust lip on double lip seals with grease unless instructed otherwise.
- Insert the seal in its seat and press down using a flat punch or seal installation tool. Do not tap the seal with a hammer or mallet.
- While inserting the seal, check that it is perpendicular to the seat; once settled, make sure that it makes contact with the thrust element, if required.
- To prevent damaging the seal lip on the shaft, position a protective guard during installation operations.

### O-ring seals

Lubricate the O-ring seals before inserting them in the seats, this will prevent them from overturning and twisting, which would jeopardize sealing efficiency.

### Sealing compounds

Apply one of the following sealing compounds on the mating surfaces when specified: SILMATE® RTV1473, or **LOCTITE® RTV 598** or **LOCTITE® INSTANT GASKET 587 BLUE**. Before applying the sealing compound, prepare the surfaces as directed on product container or as follows:

- Remove any incrustations using a metal brush.
- Thoroughly de-grease the surfaces using a locally approved cleaning agent such as safety solvent or brake parts cleaner.

### Spare parts

Only use "CNH Original Parts" or "NEW HOLLAND AGRICULTURE Parts".

Only genuine spare parts guarantee the same quality, duration and safety as original parts, as they are the same parts that are assembled during standard production. Only "CNH Original Parts" or "NEW HOLLAND AGRICULTURE Parts" can offer this guarantee.

When ordering spare parts, always provide the following information:

- Machine model (commercial name) and serial number
- Part number of the ordered part, which can be found in the "Service Parts Catalogue", used for order processing

---

## Protecting the electrical/electronic systems during charging or welding

### WARNING

**Battery acid causes burns. Batteries contain sulfuric acid.**

**Avoid contact with skin, eyes or clothing. Antidote (external): Flush with water. Antidote (eyes): flush with water for 15 minutes and seek medical attention immediately. Antidote (internal): Drink large quantities of water or milk. Do not induce vomiting. Seek medical attention immediately.**

**Failure to comply could result in death or serious injury.**

W0111A

To avoid damage to the electronic/electrical systems, always observe the following:

1. Never make or break any of the charging circuit connections, including the battery connections, when the engine is running.
2. Never short any of the charging components to ground.
3. Always disconnect the ground cable from the battery before arc welding on the machine or on any attachments on the machine.
  - Position the welder ground clamp as close to the welding area as possible
  - If welding in close proximity to a computer module, then the module should be removed from the machine
  - Never allow welding cables to lay on, near or across any electrical wiring or electronic component while welding is in progress
4. Always disconnect the negative cable from the battery when charging the battery in the machine with a battery charger.

**NOTICE:** *If welding must be performed on the unit, the battery ground cable must be disconnected from the machine battery. The electronic monitoring system and charging system will be damaged if this is not done.*

Remove the battery ground cable. Reconnect the cable when welding is completed.

### Tools

The tools that NEW HOLLAND AGRICULTURE suggests and illustrated in this manual have been:

- Specifically researched and designed for use with NEW HOLLAND AGRICULTURE machines
- Essential for reliable repair operations
- Accurately built and rigorously tested so as to offer efficient and long-lasting operation

By using these tools, repair personnel will benefit from:

- Operating in optimal technical conditions
- Obtaining the best results
- Saving time and effort
- Working in safe conditions

**NOTE:** *The terms "front", "rear", "right-hand" and "left-hand" (when referred to different parts) are determined from the rear, facing in the direction of travel of the machine during operation.*

## Torque - Minimum tightening torques for normal assembly

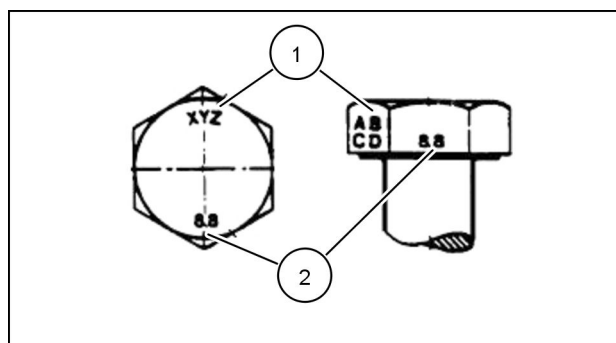
### METRIC NON-FLANGED HARDWARE

NOM. SIZE	CLASS 8.8 BOLT and CLASS 8 NUT		CLASS 10.9 BOLT and CLASS 10 NUT		LOCKNUT CL.8 W/CL8.8 BOLT	LOCKNUT CL.10 W/CL10.9 BOLT
	UNPLATED	PLATED W/ZnCr	UNPLATED	PLATED W/ZnCr		
M4	2.2 N·m (19 lb in)	2.9 N·m (26 lb in)	3.2 N·m (28 lb in)	4.2 N·m (37 lb in)	2 N·m (18 lb in)	2.9 N·m (26 lb in)
M5	4.5 N·m (40 lb in)	5.9 N·m (52 lb in)	6.4 N·m (57 lb in)	8.5 N·m (75 lb in)	4 N·m (36 lb in)	5.8 N·m (51 lb in)
M6	7.5 N·m (66 lb in)	10 N·m (89 lb in)	11 N·m (96 lb in)	15 N·m (128 lb in)	6.8 N·m (60 lb in)	10 N·m (89 lb in)
M8	18 N·m (163 lb in)	25 N·m (217 lb in)	26 N·m (234 lb in)	35 N·m (311 lb in)	17 N·m (151 lb in)	24 N·m (212 lb in)
M10	37 N·m (27 lb ft)	49 N·m (36 lb ft)	52 N·m (38 lb ft)	70 N·m (51 lb ft)	33 N·m (25 lb ft)	48 N·m (35 lb ft)
M12	64 N·m (47 lb ft)	85 N·m (63 lb ft)	91 N·m (67 lb ft)	121 N·m (90 lb ft)	58 N·m (43 lb ft)	83 N·m (61 lb ft)
M16	158 N·m (116 lb ft)	210 N·m (155 lb ft)	225 N·m (166 lb ft)	301 N·m (222 lb ft)	143 N·m (106 lb ft)	205 N·m (151 lb ft)
M20	319 N·m (235 lb ft)	425 N·m (313 lb ft)	440 N·m (325 lb ft)	587 N·m (433 lb ft)	290 N·m (214 lb ft)	400 N·m (295 lb ft)
M24	551 N·m (410 lb ft)	735 N·m (500 lb ft)	762 N·m (560 lb ft)	1016 N·m (750 lb ft)	501 N·m (370 lb ft)	693 N·m (510 lb ft)

**NOTE:** M4 through M8 hardware torque specifications are shown in pound-inches. M10 through M24 hardware torque specifications are shown in pound-feet.

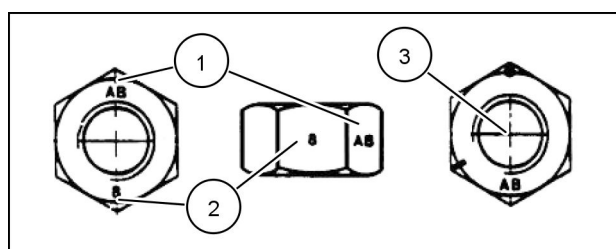
**METRIC FLANGED HARDWARE**

NOM. SIZE	CLASS 8.8 BOLT and CLASS 8 NUT		CLASS 10.9 BOLT and CLASS 10 NUT		LOCKNUT CL.8 W/CL8.8 BOLT	LOCKNUT CL.10 W/CL10.9 BOLT
	UNPLATED	PLATED W/ZnCr	UNPLATED	PLATED W/ZnCr		
M4	2.4 N·m (21 lb in)	3.2 N·m (28 lb in)	3.5 N·m (31 lb in)	4.6 N·m (41 lb in)	2.2 N·m (19 lb in)	3.1 N·m (27 lb in)
M5	4.9 N·m (43 lb in)	6.5 N·m (58 lb in)	7.0 N·m (62 lb in)	9.4 N·m (83 lb in)	4.4 N·m (39 lb in)	6.4 N·m (57 lb in)
M6	8.3 N·m (73 lb in)	11 N·m (96 lb in)	12 N·m (105 lb in)	16 N·m (141 lb in)	7.5 N·m (66 lb in)	11 N·m (96 lb in)
M8	20 N·m (179 lb in)	27 N·m (240 lb in)	29 N·m (257 lb in)	39 N·m (343 lb in)	18 N·m (163 lb in)	27 N·m (240 lb in)
M10	40 N·m (30 lb ft)	54 N·m (40 lb ft)	57 N·m (42 lb ft)	77 N·m (56 lb ft)	37 N·m (27 lb ft)	53 N·m (39 lb ft)
M12	70 N·m (52 lb ft)	93 N·m (69 lb ft)	100 N·m (74 lb ft)	134 N·m (98 lb ft)	63 N·m (47 lb ft)	91 N·m (67 lb ft)
M16	174 N·m (128 lb ft)	231 N·m (171 lb ft)	248 N·m (183 lb ft)	331 N·m (244 lb ft)	158 N·m (116 lb ft)	226 N·m (167 lb ft)
M20	350 N·m (259 lb ft)	467 N·m (345 lb ft)	484 N·m (357 lb ft)	645 N·m (476 lb ft)	318 N·m (235 lb ft)	440 N·m (325 lb ft)
M24	607 N·m (447 lb ft)	809 N·m (597 lb ft)	838 N·m (618 lb ft)	1118 N·m (824 lb ft)	552 N·m (407 lb ft)	

**IDENTIFICATION****Metric Hex head and carriage bolts, classes 5.6 and up**

20083680 1

1. Manufacturer's Identification
2. Property Class

**Metric Hex nuts and locknuts, classes 05 and up**

20083681 2

## INTRODUCTION

1. Manufacturer's Identification
2. Property Class
3. Clock Marking of Property Class and Manufacturer's Identification (Optional), i.e. marks **60 °** apart indicate Class 10 properties, and marks **120 °** apart indicate Class 8.

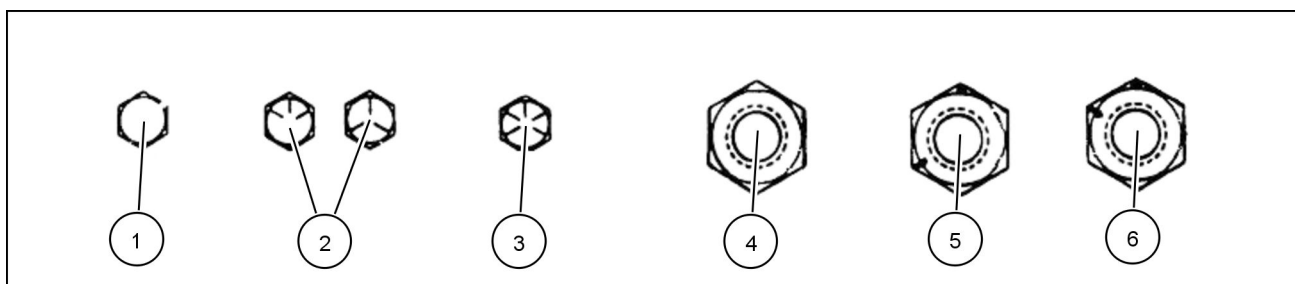
### INCH NON-FLANGED HARDWARE

NOMINAL SIZE	SAE GRADE 5 BOLT and NUT		SAE GRADE 8 BOLT and NUT		LOCKNUT GrB W/ Gr5 BOLT	LOCKNUT GrC W/ Gr8 BOLT
	UN-PLATED or PLATED SILVER	PLATED W/ZnCr GOLD	UN-PLATED or PLATED SILVER	PLATED W/ZnCr GOLD		
1/4	8 N·m (71 lb in)	11 N·m (97 lb in)	12 N·m (106 lb in)	16 N·m (142 lb in)	8.5 N·m (75 lb in)	12.2 N·m (109 lb in)
5/16	17 N·m (150 lb in)	23 N·m (204 lb in)	24 N·m (212 lb in)	32 N·m (283 lb in)	17.5 N·m (155 lb in)	25 N·m (220 lb in)
3/8	30 N·m (22 lb ft)	40 N·m (30 lb ft)	43 N·m (31 lb ft)	57 N·m (42 lb ft)	31 N·m (23 lb ft)	44 N·m (33 lb ft)
7/16	48 N·m (36 lb ft)	65 N·m (48 lb ft)	68 N·m (50 lb ft)	91 N·m (67 lb ft)	50 N·m (37 lb ft)	71 N·m (53 lb ft)
1/2	74 N·m (54 lb ft)	98 N·m (73 lb ft)	104 N·m (77 lb ft)	139 N·m (103 lb ft)	76 N·m (56 lb ft)	108 N·m (80 lb ft)
9/16	107 N·m (79 lb ft)	142 N·m (105 lb ft)	150 N·m (111 lb ft)	201 N·m (148 lb ft)	111 N·m (82 lb ft)	156 N·m (115 lb ft)
5/8	147 N·m (108 lb ft)	196 N·m (145 lb ft)	208 N·m (153 lb ft)	277 N·m (204 lb ft)	153 N·m (113 lb ft)	215 N·m (159 lb ft)
3/4	261 N·m (193 lb ft)	348 N·m (257 lb ft)	369 N·m (272 lb ft)	491 N·m (362 lb ft)	271 N·m (200 lb ft)	383 N·m (282 lb ft)
7/8	420 N·m (310 lb ft)	561 N·m (413 lb ft)	594 N·m (438 lb ft)	791 N·m (584 lb ft)	437 N·m (323 lb ft)	617 N·m (455 lb ft)
1	630 N·m (465 lb ft)	841 N·m (620 lb ft)	890 N·m (656 lb ft)	1187 N·m (875 lb ft)	654 N·m (483 lb ft)	924 N·m (681 lb ft)

**NOTE:** For Imperial Units, *1/4 in* and *5/16 in* hardware torque specifications are shown in pound-inches. *3/8 in* through *1 in* hardware torque specifications are shown in pound-feet.

**INCH FLANGED HARDWARE**

NOM- INAL SIZE	SAE GRADE 5 BOLT and NUT		SAE GRADE 8 BOLT and NUT		LOCKNUT GrF W/ Gr5 BOLT	LOCKNUT GrG W/ Gr8 BOLT
	UNPLATED or PLATED SILVER	PLATED W/ZnCr GOLD	UNPLATED or PLATED SILVER	PLATED W/ZnCr GOLD		
1/4	9 N·m (80 lb in)	12 N·m (106 lb in)	13 N·m (115 lb in)	17 N·m (150 lb in)	8 N·m (71 lb in)	12 N·m (106 lb in)
5/16	19 N·m (168 lb in)	25 N·m (221 lb in)	26 N·m (230 lb in)	35 N·m (310 lb in)	17 N·m (150 lb in)	24 N·m (212 lb in)
3/8	33 N·m (25 lb ft)	44 N·m (33 lb ft)	47 N·m (35 lb ft)	63 N·m (46 lb ft)	30 N·m (22 lb ft)	43 N·m (32 lb ft)
7/16	53 N·m (39 lb ft)	71 N·m (52 lb ft)	75 N·m (55 lb ft)	100 N·m (74 lb ft)	48 N·m (35 lb ft)	68 N·m (50 lb ft)
1/2	81 N·m (60 lb ft)	108 N·m (80 lb ft)	115 N·m (85 lb ft)	153 N·m (113 lb ft)	74 N·m (55 lb ft)	104 N·m (77 lb ft)
9/16	117 N·m (86 lb ft)	156 N·m (115 lb ft)	165 N·m (122 lb ft)	221 N·m (163 lb ft)	106 N·m (78 lb ft)	157 N·m (116 lb ft)
5/8	162 N·m (119 lb ft)	216 N·m (159 lb ft)	228 N·m (168 lb ft)	304 N·m (225 lb ft)	147 N·m (108 lb ft)	207 N·m (153 lb ft)
3/4	287 N·m (212 lb ft)	383 N·m (282 lb ft)	405 N·m (299 lb ft)	541 N·m (399 lb ft)	261 N·m (193 lb ft)	369 N·m (272 lb ft)
7/8	462 N·m (341 lb ft)	617 N·m (455 lb ft)	653 N·m (482 lb ft)	871 N·m (642 lb ft)	421 N·m (311 lb ft)	594 N·m (438 lb ft)
1	693 N·m (512 lb ft)	925 N·m (682 lb ft)	979 N·m (722 lb ft)	1305 N·m (963 lb ft)	631 N·m (465 lb ft)	890 N·m (656 lb ft)

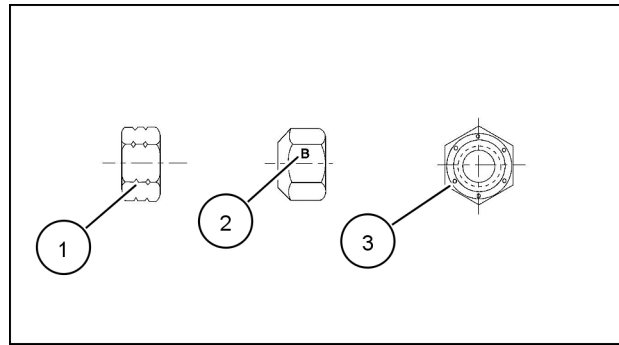
**IDENTIFICATION****Inch Bolts and free-spinning nuts**

20083682 3

**Grade Marking Examples**

SAE Grade Identification			
1	Grade 2 - No Marks	4	Grade 2 Nut - No Marks
2	Grade 5 - Three Marks	5	Grade 5 Nut - Marks <b>120 °</b> Apart
3	Grade 8 - Five Marks	6	Grade 8 Nut - Marks <b>60 °</b> Apart

---

**Inch Lock Nuts, All Metal (Three optional methods)**

20090268 4

**Grade Identification**

Grade	Corner Marking Method (1)	Flats Marking Method (2)	Clock Marking Method (3)
Grade A	No Notches	No Mark	No Marks
Grade B	One Circumferential Notch	Letter B	Three Marks
Grade C	Two Circumferential Notches	Letter C	Six Marks



---

## **Definition - Important notice regarding equipment servicing**

All repair and maintenance work listed in this manual must be carried out only by qualified dealership personnel, strictly complying with the instructions given, and using, whenever possible, the special tools.

Anyone who performs repair and maintenance operations without complying with the procedures provided herein shall be responsible for any subsequent damages.

The manufacturer and all the organizations of its distribution chain, including - without limitation - national, regional, or local dealers, reject any responsibility for damages caused by parts and/or components not approved by the manufacturer, including those used for the servicing or repair of the product manufactured or marketed by the manufacturer. In any case, no warranty is given or attributed on the product manufactured or marketed by the manufacturer in case of damages caused by parts and/or components not approved by the manufacturer.

The information in this manual is up-to-date at the date of the publication. It is the policy of the manufacturer for continuous improvement. Some information could not be updated due to modifications of a technical or commercial type, or changes to the laws and regulations of different countries.

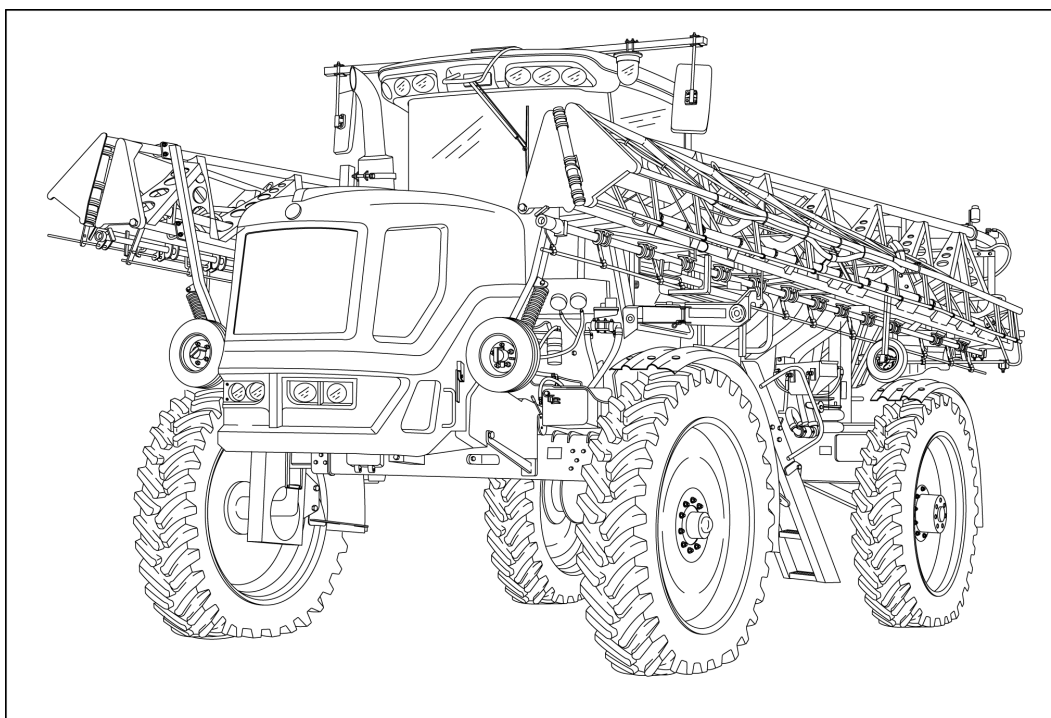
In case of questions, refer to your NEW HOLLAND AGRICULTURE Sales and Service Networks.





# **SERVICE MANUAL**

## **Engine**



**SP.240R**  
**SP.275R**

# Contents

---

## Engine - 10

Engine and crankcase.....	10.001
SP.240R , SP.275R	
Air cleaners and lines.....	10.202
SP.240R , SP.275R	
Fuel filters .....	10.206
SP.240R , SP.275R	
Lift pump and lines .....	10.210
SP.240R , SP.275R	
Fuel tanks .....	10.216
SP.240R , SP.275R	
Intake and exhaust manifolds and muffler.....	10.254
SP.240R , SP.275R	
Engine cooling system .....	10.400
SP.240R , SP.275R	
Fan and drive.....	10.414
SP.240R , SP.275R	



## **Engine - 10**

### **Engine and crankcase - 001**

**SP.240R  
SP.275R**

# Contents

---

## Engine - 10

### Engine and crankcase - 001

#### SERVICE

##### Engine support and mounts

Remove .....	3
Install .....	5

## Engine support and mounts - Remove

### **⚠ WARNING**

**Heavy parts!**

**Support designated component(s) with adequate lifting equipment.**

**Failure to comply could result in death or serious injury.**

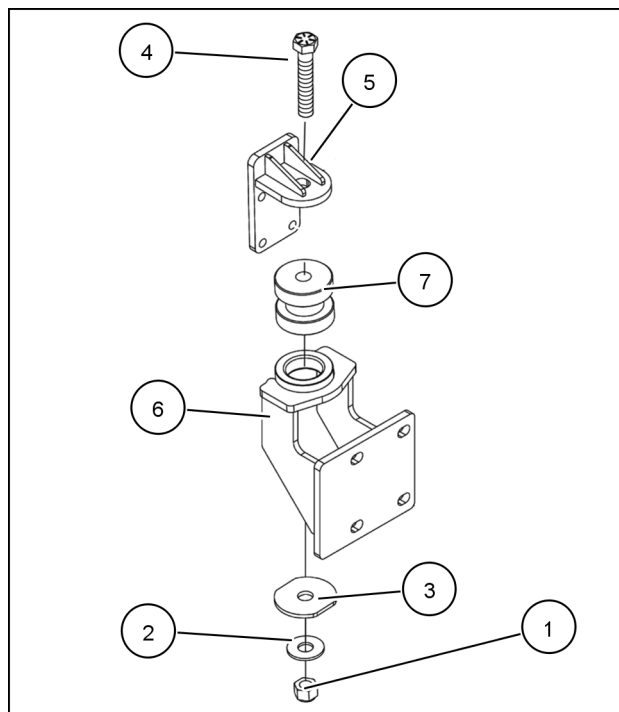
W1024A

1. Secure engine to suitable lifting device.

**NOTE:** The engine will need to be lifted slightly to remove/install some hardware in the following procedures.

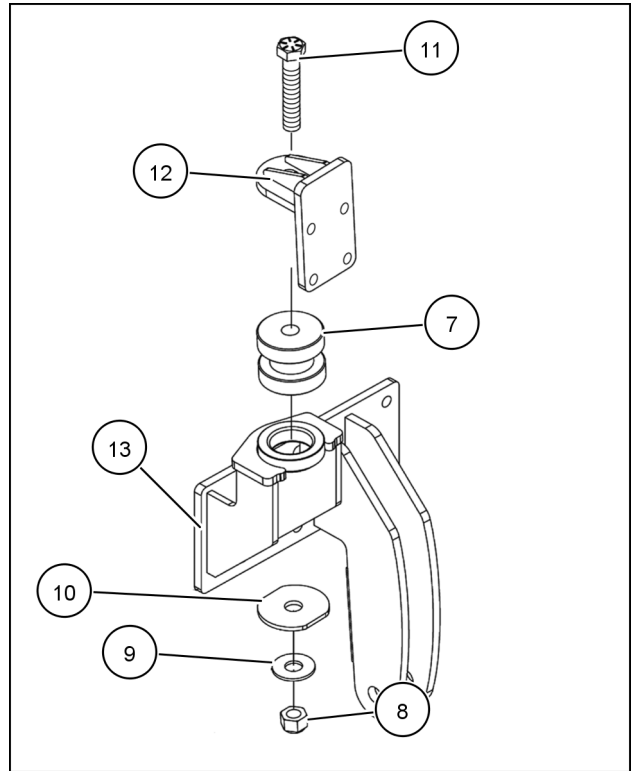
2. Remove locknut (1), flat washer (2), snubbing washer (3), and hex bolt (4), from rear right engine mount weldments (5) and (6).

**NOTE:** (Engine isolator (7) will be removed, after performing similar hardware removal from rear left engine mount assembly.)



RAIL12SP00303AA 1

3. Remove locknut **(8)** flat washer **(9)**, snubbing washer **(10)**, and hex bolt **(11)** from rear left engine mount weldments **(12)** and **(13)**.
4. Remove engine isolator **(7)** from rear left engine mount weldments **(12)** and **(13)**.
5. Then remove engine isolator **(7)** (securing hardware was previously removed) from rear right engine mount weldments **(5)** and **(6)**.

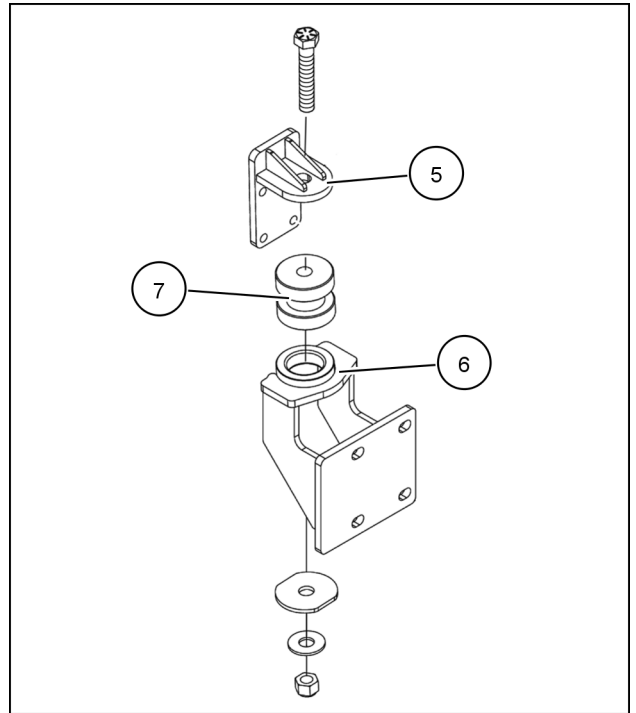


RAIL12SP00304AA 2



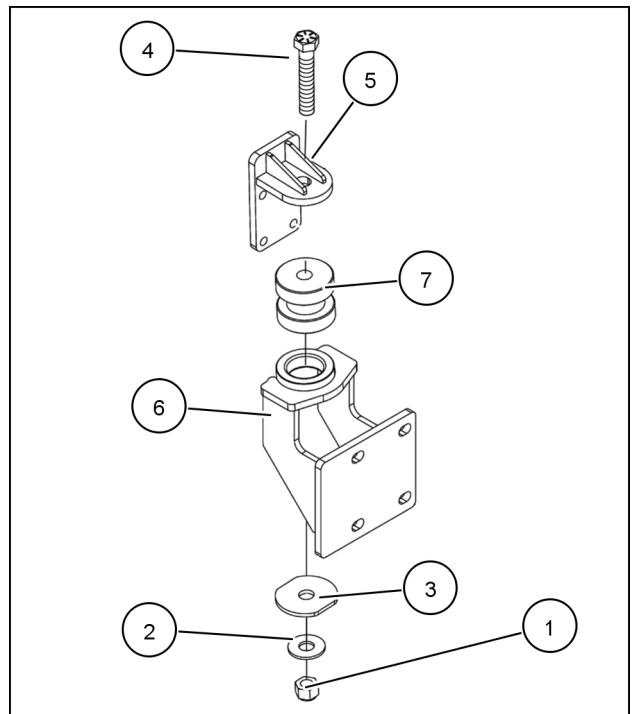
## Engine support and mounts - Install

1. Install engine isolator (7) in between rear right engine mount weldments (5) and (6).



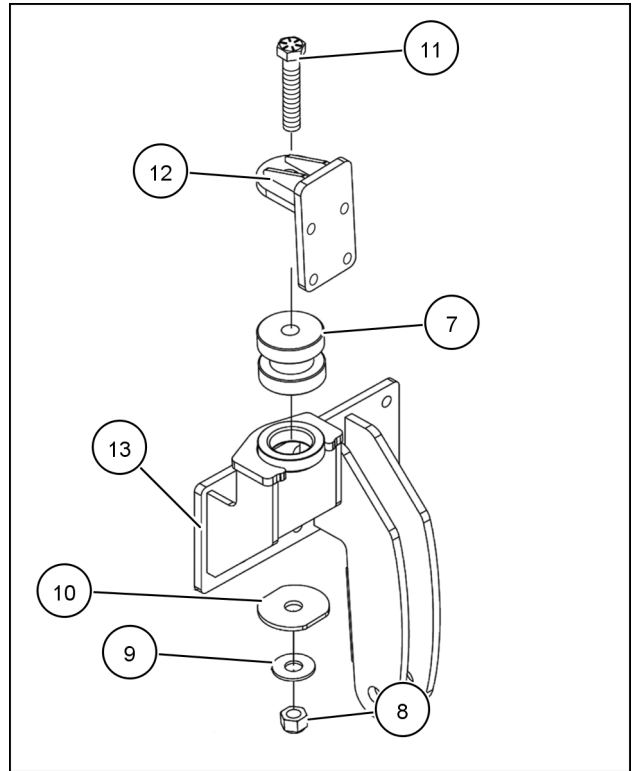
RAIL12SP00303AA 1

2. Install hex bolt (4), snubbing washer (3), flat washer (2), and locknut (1), to rear right engine mount weldments (5) and (6). Tighten only enough to hold hardware in place.



RAIL12SP00303AA 2

3. Then install engine isolator **(7)** in between rear left engine mount weldments **(12)** and **(13)**.
4. Install hex bolt **(11)**, snubbing washer **(10)**, flat washer **(9)**, and locknut **(8)** to rear left engine mount weldments **(12)** and **(13)**. Tighten only enough to hold hardware in place.
5. Lower engine, then tighten hardware on both engine mount assemblies.
6. Release engine from lifting device.



RAIL12SP00304AA 3

# Index

---

## Engine - 10

### Engine and crankcase - 001

Engine support and mounts - Install .....	5
Engine support and mounts - Remove .....	3





## **Engine - 10**

### **Air cleaners and lines - 202**

**SP.240R**  
**SP.275R**

Engine - 10

Air cleaners and lines - 202

SERVICE

Air cleaner

Remove - Air cleaner assembly .....	3
Install - Air cleaner assembly .....	5
Replace - Filter .....	7