

Product: New Holland Ford GearBox Service Repair Manual

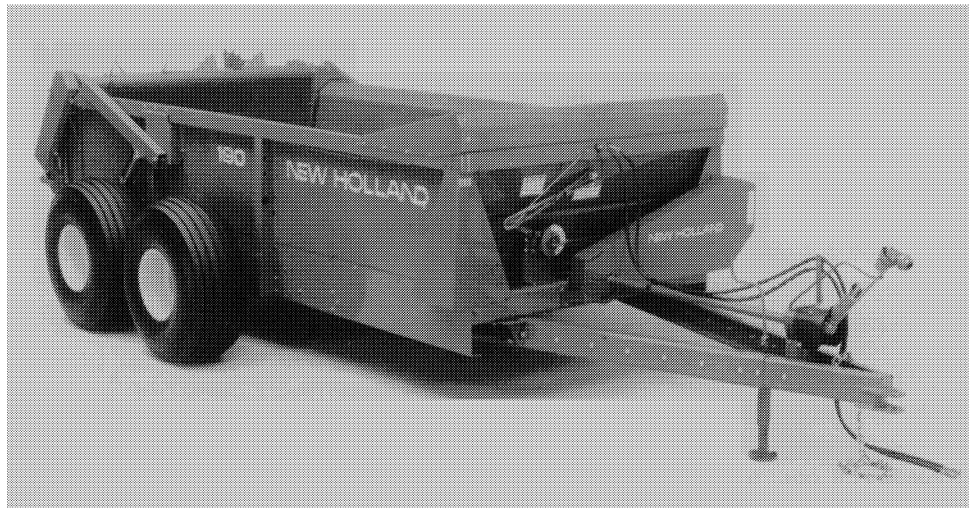
Full Download: <https://www.aresairmanual.com/downloads/new-holland-ford-gearbox-service-repair-manual/>



# FORD NEW HOLLAND SERVICE MANUAL GEARBOX REPAIR

MANURE SPREADERS  
190, 195, S676, 790, 791

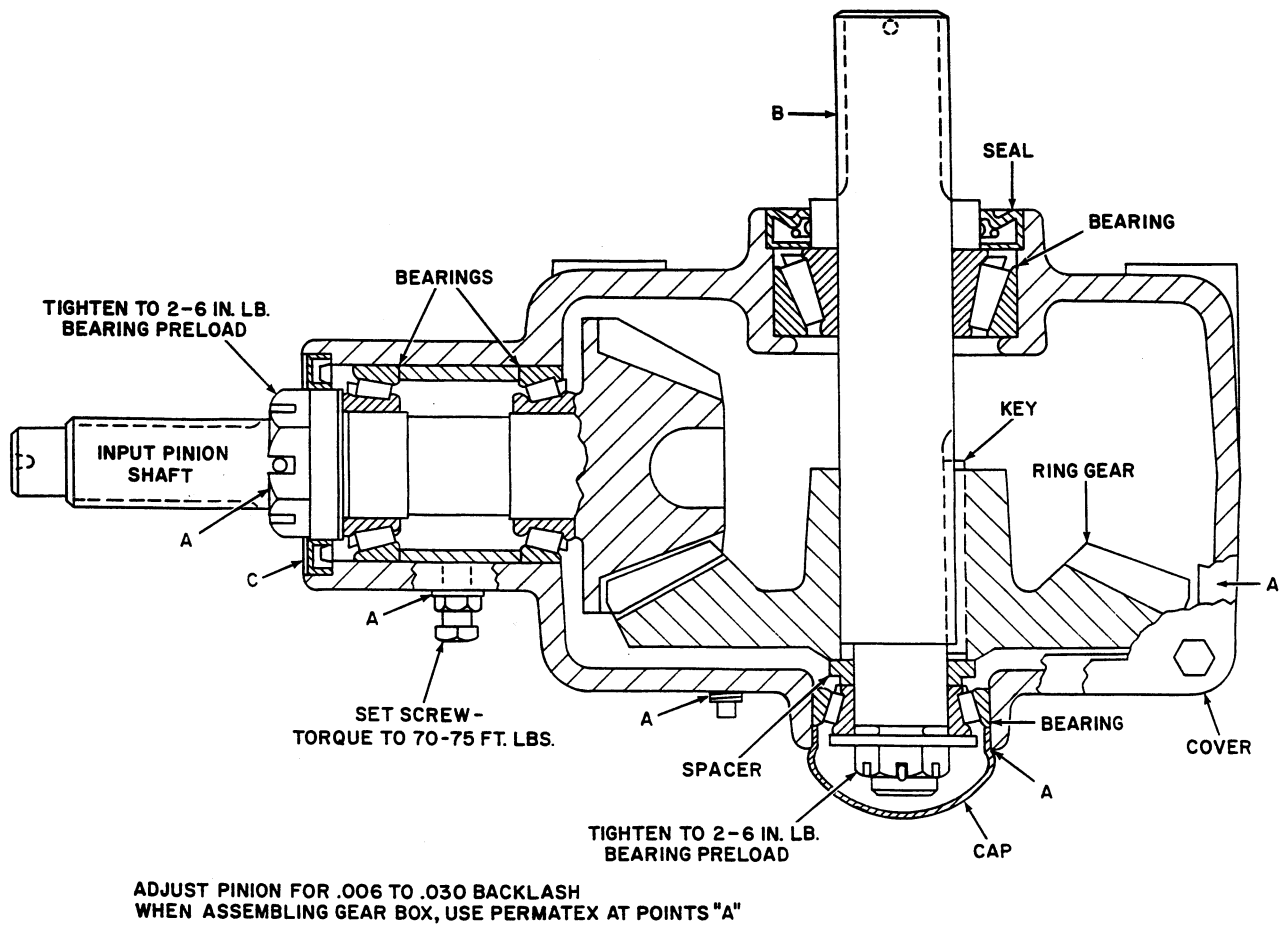
41721404



Sample of manual. Download All 8 pages at:

<https://www.aresairmanual.com/downloads/new-holland-ford-gearbox-service-repair-manual/> © 1993 FORD NEW HOLLAND, INC.

Reprinted



**FIGURE 1**

# BEVEL GEARBOX

## REMOVAL

Should the gearbox need replacement of any parts, it is best to remove the gearbox from the spreader.

Support the beater assembly with a forklift or chain hoist. Remove the beater bearing support bracket on the right side and the gearbox mounting bolts.

Pull the beater assembly to the rear. This will separate the gearbox drive. At this time the gearbox can be separated from the beater assembly.

## DISASSEMBLY

1. Remove the cover and drain the oil.
2. Remove the cap, cotter pin and nut, washer, bearing, and spacer on the output shaft, B, Figure 1.
3. Use a soft punch and hammer to drive the output shaft out of the box. Do not force the shaft. Be careful not to damage the shaft threads. If binding of the gear and shaft should occur, support the ring gear 180° from the pinion gear with a pry bar and continue to tap the output shaft.
4. Remove the ring gear from the gearbox.
5. Loosen the setscrew jam nut and setscrew holding the pinion assembly.

6. Remove the cotter pin and nut. Tap the pinion toward the center of the gearbox until the bearing and pinion are free.

## REASSEMBLY

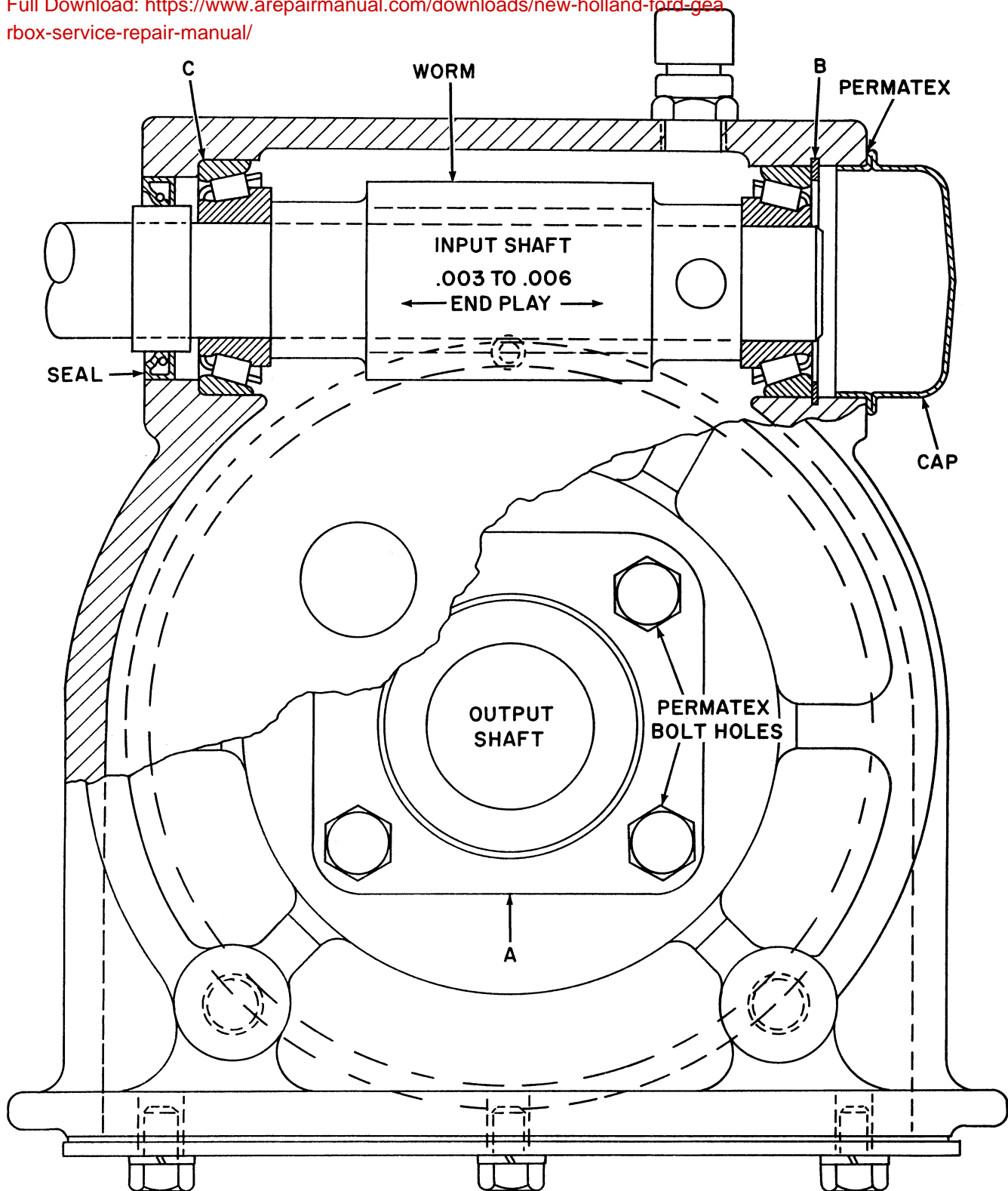
Reverse the disassembly procedure except: Install oil seal, C, Figure 1, in the gearbox housing before installing the nut. Install the oil seal on the output shaft last. Use Permatex at points A when assembling the box.

Tighten the output and input shaft nut for 2 in. lbs.-6 in. lbs. bearing preload.

To adjust the ring gear backlash, loosen the setscrew and move the pinion shaft toward the ring gear until the proper backlash is accomplished - 0.006" to 0.030" between the pinion and ring gear.

This should be checked at a number of points around the ring gear. When correct backlash is attained, torque the setscrew holding the pinion assembly to 70 lbs.-75 lbs. and secure with locknut.

Refill the gearbox with Ford New Holland API-GL5 80W-90 oil, part #854976, or any lubricant meeting New Holland standards as listed in the Operator's Manual.



**FIGURE 2**