

Product: 2008 New Holland LM1330,LM1333 Telehandlers Service Repair Workshop Manual
Full Download: <https://www.arepairmanual.com/downloads/2008-new-holland-lm1330lm1333-telehandlers-service-repair-workshop-manual/>



NEW HOLLAND

LM1330
LM1333

Workshop Manual

Workshop Manual

Stampato N° 87755818
Italiano - Printed in Italy



LM1330
LM1333

Sample of manual. Download All 415 pages at:
<https://www.arepairmanual.com/downloads/2008-new-holland-lm1330lm1333-telehandlers-service-repair-workshop-manual/>

PROVEN PERFORMANCE

LM1330 LM1333

TELEHANDLERS

Workshop Manual

Print N. 87755818 (I - 2008)



THIS ALERT SYMBOL SIGNALS IMPORTANT MESSAGES INVOLVING YOUR SAFETY.

Read and heed carefully the safety instructions listed and follow the precautions recommended to avoid potential risks and to safeguard your health and your safety.

You will find this symbol in the text of this Manual referred to the following key words:

WARNING - Cautions directed to avoid improper repair interventions involving potential consequences for the operator's safety.

DANGER - These warnings qualify specifically potential dangers for the safety of the operator or other persons directly or indirectly involved.

IMPORTANT NOTICE

All maintenance and repair interventions explained in this Manual **must be performed exclusively by the Service Organization of the Manufacturer**, observing strictly the instructions explained using, whenever necessary, the recommended specific tools.

Whoever performs the operations reported without following exactly the precautions is responsible on his own, for the damages that may result.

Neither the Factory nor any Organizations in its Distribution Network, including but not limited to national, regional or local distributors, are responsible for any liability arising from any damage resulting from defects caused by parts and/or components not approved by the Factory for use in maintaining and/or repairing products manufactured or merchandized by the Factory.

In any case, no warranty of any kind is made or shall be imposed with respect to products manufactured or merchandized by the Factory, when failures are caused by the use of parts and/or components not approved by the Factory.

AVOID ACCIDENTS

Most accidents and injuries occurring in industry, on the farm, at home or on the road, are caused by the failure of some individual to follow simple and fundamental safety rules or precautions. For this reason, **MOST ACCIDENTS CAN BE PREVENTED** by recognizing the real cause and taking the necessary precautions, before the accident occurs.

Regardless of the care used in design and construction of any type of equipment, there may be conditions that cannot be completely safeguarded against without interfering with reasonable accessibility and efficient operation.

A careful operator is the best insurance against accidents. The complete observance of one simple rule would prevent many thousands serious injuries each year.

This rule is: Never attempt to clean, lubricate or adjust a machine while it is in motion.



ATTENTION

On machines having hydraulically, mechanically and/or cable controlled equipment (such as showels, loaders, dozers, scrapers etc.) be certain the equipment is lowered to the ground before servicing, adjusting and/or repairing.

If it is necessary to have the equipment partially or fully raised to gain access to certain items, be sure the equipment is suitably supported by means other than the hydraulic lift cylinders, cable and/or mechanical device used for controlling the equipment.

MODEL CODES

The complete range of telescopic handlers (Telehandler) described in this manual is identified in the text by reference to the maximum extension of the telescopic arm.

The vehicles listed below may not be available in all countries or markets, therefore for the latest information consult your authorised dealer.

Model	LM1330	
	LM1333	
	no stab.	Small stab.
Engine	74 kW Turbocharged with Aftercooler	
Max. lifting height (m)	12,750	13.060
Max. capacity (kg) a 500 mm from fork stop	3.300	3.300
Capacity at max. height (kg)	2.500	3.300
Extension at max. height (m)	1.800	1.800
Max. longitudinal extension (m)	8.750	
Capacity at max. extension (kg)	650	1.350
Weight (kg)	9.600	
Length (m)	5.950	

Workshop Manual

LM1330

LM1333

TELEHANDLERS

GENERAL LIST OF CONTENTS

SECTION 00 - GENERAL

Description	Page
General instructions	1
Safety rules	3
Product identification	6
Environmental considerations	9
Maintenance techniques	10

SECTION 10 - ENGINE

Description	Page
Main engine specifications	3
General engine specifications	4
General information on F4GE9484F*J600 engine	6
Removal and installation of engine and radiator	11
Troubleshooting	23
Tightening torques	36
Special tools	37

SECTION 21 - POWERSHIFT GEARBOX

Description	Page
Powershift Gearbox 4x4	2
Driving with the powershift gearbox	2
Gearbox assembly	5
Idler gear case assembly	7
Gearbox operation	8
Transmission and Hydraulic oil circuit diagrams	15
Modulation valve operation	31
Torque converter and heat exchanger hydraulic oil circuit	34
Troubleshooting guide	35
Troubleshooting procedures	35
Troubleshooting	37
Pressure testing clutch and high pressure circuit	38
Pressure testing torque converter and cooler circuit	39
Check points	40
Assembly instructions	42
Overhaul	45
Special tools	104

SECTION 25 - FRONT AXLE

Description	Page
Specifications	1
Description	2
Operation	3
Troubleshooting	4
Wheel toe-in check	5
Component overhaul	5
Front axle removal procedure	6
Front axle overhaul	7
Axle drive pinion bearing adjustment	52
How to install and adjust the axle drive pinion	54
Front drive shaft	57

SECTION 27 - REAR AXLE

Description	Page
Specifications	1
Description	2
Operation diagram	3
Component overhaul	5
Rear axle removal procedure	5
Overhaul	6
Special tools	7

SECTION 33 - BRAKES

Description	Page
Power brakes	2
Brake pump	3
Parking brake	4
Brake disc adjustment	7
Troubleshooting	8
Brakes disassembly	9

SECTION 35 - HYDRAULIC SYSTEM

Description	Page
Technical data	2
Description and operation	3
Introduction	3
Steering system hydraulic circuit	3
Steering valve	4
Telescopic boom hydraulic circuit	6

Component operation	11
Hydraulic pump	11
Delivery side divider valve	11
Pressure reduction valve	13
Front loader controls	15
Balancing valves	17
Power steering (OSPQ)	19
Telescopic boom distributor	20
Auxiliary control distributor	23
Cylinders	26
Boom	40

SECTION 55 - ELECTRICAL SYSTEM

Description	Page
Chapter 1 – Electrical system general	
Electrical equipment specifications	1
Electrical system and fuses	2
Controls and instruments	6
Procedure for the calibration of the load momentum system	17
Bulb replacement	22
Protecting the electrical systems during charging or welding	25
Starting the machine using jump leads	26
Temporary wiring repairs	27
Electrical system-general fault finding	29
Chapter 2 – Circuit diagrams	
List of connectors	32
List of components	33
How to use the circuit diagrams	34
Diagram 1: Starting/Recharge/Warning/Indicators lights	36
Diagram 2: Transmission	38
Diagram 3: Wheel alignment/Hydraulic solenoids/Brake system	40
Diagram 4: Boom control	42
Diagram 5: Stabiliser	44
Diagram 6: Lights/Front wiper	46
Diagram 7: Work lamps/Roof beacon light	48
Diagram 8: Load momentum device / Upper wiper	50
Diagram 9: Heating / Radio / Power socket / Ceiling light	52
Diagram 10: Conditioner	54

SECTION 60 - AIR CONDITIONING UNIT

Description	Page
AIR CONDITIONING UNIT	2
Operating instructions	2
Cab climate	4
Cab climate controls	4
Air conditioning system	5
Service precautions	6
Tool connections	9
Discharging	10
Refrigerant charging	10
Leak inspection	11
Special tools	14
Troubleshooting	15

GENERAL INSTRUCTIONS

IMPORTANT NOTICE

All maintenance and repair interventions listed in this Manual must be performed exclusively by the Service Network of the Manufacturer, complying strictly with the indications herein and using, when required, the prescribed special tools.

Whoever performs service operations described herein without complying strictly with the instructions becomes solely responsible for any consequential damage that could occur.

ADJUSTING SHIMS

For each adjustment select the adjusting shims, measuring them one by one with a micrometer and adding together subsequently, the values measured. Do not rely on the measurement of the entire pack, that could be wrong, or the nominal value indicated on each ring.

SEALS FOR ROTATING SHAFTS

For correct installation of the seals for rotating shafts, please comply with the following precautions:

- prior to installation, keep the seals soaking for at least half an hour in the same oil they are going to seal;
- clean thoroughly the shaft and make sure that its working face is undamaged;
- direct the sealing lip toward the fluid; in the event the lip is of the hydro dynamic type, the grooves must be directed so that, in relation to the rotating direction of the shaft, they tend to return the fluid toward the inside of the sealing device;
- smear the sealing lip with a film of lubricant (oil to be preferred to grease) and fill with grease the gap between sealing lip and dust lip in twin lip seals;
- insert the seal in its seat, pressing it with a punch with a flat face; never strike it with a hammer or mallet;
- when pressing in the seal, make sure that it is inserted perpendicularly in relation to the seat and, once in position, make sure that, when required, it contacts the shoulder;
- to prevent the sealing lip of the seal being damaged by the shaft, insert appropriate protection during the installation of the two parts.

“O-RING” TOROIDAL SEALS

Lubricate O-rings before inserting them in the relevant seats to prevent them becoming twisted and rolled during installation, thus jeopardising their sealing capacity.

SEALING COMPOUNDS

Mating surface marked X must be smeared with a sealing compound recommended by the Manufacturer or an adequate equivalent.

Prior to applying the compound, prepare the surfaces in the following manner:

- remove all possible scaling with a metal brush;
- degrease the surfaces thoroughly using the degreasing agent recommended by the Manufacturer or an adequate equivalent.

BEARINGS

When installing bearings, it is recommended to:

- warm them up to 80° – 90 °C (176 – 194 °F) before installing them on the relevant shafts;
- cool them down before inserting them in the relevant seats with an outer fitting.

SPLIT PINS

When installing split pins, make sure that the cut is pointing in the direction of the load on the pin. On the other hand, spiral elastic pins do not require any installation orientation.

NOTES ON SPARE PARTS

Use genuine **spare parts guaranteed by the Manufacturer** only.

Genuine spare parts are the only ones ensuring the same quality, the same life and the same safety as the originally mounted parts, since they are the same as the ones installed in production.

Only genuine parts from the manufacturer ensure this guarantee.

Orders for spare parts must include the following indications:

- model of the vehicle (commercial designation) and serial number;
- type and number of the engine;
- part number for the item ordered, as provided by the "Microfiches" or the "Spare Part Catalogue", on which the order is based.

NOTES ON TOOLING

The tooling that the Manufacturer recommends and illustrates in this Manual is:

- studied and designed specifically for servicing vehicles of this range;
- required to ensure a reliable repair;
- accurately developed and inspected to provide effective and long lasting working.

You are also reminded that correct tooling allows you to:

- to operate under optimised technical conditions;
- to achieve the best results;
- to save time and effort;
- to work in safer conditions.

WARNING

The wear limits provided for some items must be considered as recommended values, but not absolutely binding. The indications "front", "rear", "right", "left" refer to different parts as seen seating from in the operator's seat oriented in the normal travel direction of the vehicle.

HOW TO MOVE A VEHICLE WITHOUT BATTERIES

The cables of the external power supply must be connected exclusively to the respective terminals of the positive and negative cables of the vehicle, using efficient clamps providing adequate and safe contact. In the event it is necessary to check the operation of the electrical system of the vehicle, do it exclusively with the power supply connected. At the end of the inspection, disconnect all actuators and deactivate the power supply before disconnecting the cables.

SAFETY RULES

PAY ATTENTION TO THIS SYMBOL



This alert symbol announces important messages involving your safety. Read carefully the safety instructions listed and follow the precautions recommended to avoid potential risks and to safeguard your health and your safety. You will find this symbol in the text of this Manual with the following key words:



WARNING - Cautions intended to avoid improper repair interventions involving potential consequences for the safety of the personnel performing the repairs.

DANGER - These warnings qualify specifically potential dangers for the safety of the operator or other persons directly or indirectly involved.

AVOID ACCIDENTS

Most accidents, whether they occur in workshop, on the farm, at home or on the road, are caused by the failure of some individuals to follow simple and fundamental safety rules and precautions. For this reason **MOST ACCIDENTS CAN BE PREVENTED** by recognising the real cause and doing something about it before the accident occurs.

Regardless of the care used in the design and construction of any type of equipment, there are many conditions that cannot be completely safeguarded against without hindering reasonable accessibility and efficient operation.

A careful operator is the best insurance against an accident.

The complete observance of one simple rule would prevent many serious accidents.

DANGER. Never attempt to clean, lubricate or maintain a machine while it is in motion.

SAFETY RULES

SAFETY RULES

- ◇ Read and heed all safety rules before any intervention.
- ◇ Do not wear rings, wristwatches, jewellery, and loose or hanging apparels, such as ties, torn clothing, scarves, unbuttoned or unzipped jackets that can catch on moving parts. Wear proper safety equipment as recommended for the job. Examples: hard hat, heavy gloves, ear protection, safety glasses or goggles, reflector vests, respirator. Consult your employer for specific safety equipment requirements.
- ◇ Do not perform any service operation on the machine with a person seated in the operator's compartment, unless he is an authorised operator co-operating in the operation to be performed.
- ◇ Never attempt to operate the machine or its tools from any position other than seated in the operator's seat.
- ◇ Never perform any intervention on the machine with engine running unless this is prescribed.
- ◇ Cut-off the engine and make sure that all pressures in the hydraulic systems are released before removing caps, covers, valves etc.
- ◇ All service interventions must be performed with the utmost care and attention.
- ◇ Shop and/or field service platforms or ladders must be constructed and maintained in accordance with local and national regulations.
- ◇ Disconnect the batteries and tag all controls to signal that an intervention is in progress. Block the machine and all equipment that must be lifted.
- ◇ Do not check nor refill fuel tanks, as well as batteries, nor use starting fluid while smoking or near open flames since these fluids are flammable.
- ◇ Brakes are inactive when manually released for service interventions. Under such circumstances it is necessary to maintain the control of the machine using appropriate blocks or similar devices.
- ◇ The fuel-filling nozzle must be kept constantly inside the filling neck. Keep this contact from the beginning to the end of the fuelling operation to avoid the possibility that sparks due to static electricity are generated.

- ◇ Use only designated towing or attaching points. Use care in making attachments. Make sure pins and/or locks are secure before pulling. Stay clear of drawbars, cables or chains under load.
 - ◇ To move a disabled machine, use a trailer or a low-boy, if available.
 - ◇ To load/unload a machine from transporter, choose a level surface ensuring firm support to the wheels of truck or trailer. Anchor the machine securely to the bed of truck or trailer and block wheels or tracks with appropriate wedges.
 - ◇ Use only approved grounded auxiliary power sources for heaters, chargers, pumps and similar equipment to reduce the hazards of electrical shocks.
 - ◇ Lift and handle heavy parts with a lifting device of proper capacity.
 - ◇ Beware of bystanders.
 - ◇ Never pour gasoline or diesel fuel into open, wide and low containers.
 - ◇ Never use gasoline, solvent or other flammable fluid to clean parts. Use exclusively qualified, non-flammable, non-toxic commercial solvents.
 - ◇ When using compressed air for cleaning parts, use safety glasses with side shields or goggles.
 - ◇ Limit pressure to 2.1 bar, in accordance with local and national regulations.
 - ◇ Do not run the engine in closed areas without proper ventilation to remove deadly exhaust fumes.
 - ◇ Do not smoke or permit any open flames or spark near when re-fuelling or handling flammable materials.
 - ◇ Do not use an open flame as a light source to look for leaks or for inspection anywhere on the machine.
 - ◇ Move with extreme care when working under the machine, its attachments and or on or near them. Always wear protective safety equipment as required, such as hard hat, goggles, safety shoes, ear plugs.
 - ◇ When performing operations requiring running of the engine, have a qualified operator in the operator's seat at all times with the mechanic on sight. Place the transmission in neutral and set the brakes and safety lock.
 - ◇ For field service, move machine to level ground, if possible, and block it. If work on an incline is absolutely necessary, first block machine and its attachments securely, then move it to level ground as soon as possible with a certain margin of safety.
 - ◇ Do not trust worn and /or kinked chains and cables: do not use them for lifting or pulling operations. To handle them, always use heavy gloves.
 - ◇ Be sure chains and cables are anchored and the anchor points are strong enough to handle the expected load. Keep exposed personnel clear of anchor points and cables or chains. No bystanders are allowed near the hooking points, chains or cables.
 - ◇ Keep the area where maintenance operations are performed CLEAN and DRY. Eliminate immediately all water and oil spillages.
 - ◇ Do not pile up oily or greasy rags; they represent a fire hazard. Store in a closed metal container.
- Before starting machine, check, adjust and lock the operator's seat for maximum comfort and control of the machine. Be sure exposed personnel in the area of operation are clear of the machine before moving it or its attachments. Sound the horn.
- ◇ Do not carry loose objects in pockets that might fall unnoticed into open compartments.
 - ◇ Wear proper protective equipment such as safety goggles or safety glasses with side shields, hard hat, safety shoes, heavy gloves when metal or other particles are apt to fly or fall.
 - ◇ Wear welders protective equipment such as dark safety glasses, helmets, protective clothing, gloves and safety shoes, when welding or burning. Wear dark safety glasses near welding zones. **DO NOT LOOK AT ARC WITHOUT PROPER EYE PROTECTION.**
 - ◇ Steel cables are frayed after prolonged use; always wear appropriate protections (heavy gloves, goggles etc.).
 - ◇ Handle all parts carefully. Keep hands and fingers away from structures, gears or moving parts. Use and wear always the appropriate protections, such as safety goggles, gloves and safety shoes.

STARTING

- ◇ Do not run the engine in closed areas without proper ventilation to remove deadly exhaust fumes.
- ◇ Do not place head, body, limbs, feet, hands or fingers, near rotating fans or belts. Be especially alert near pusher fans.

ENGINE

- ◇ Loosen the radiator cap very slowly, to release pressure from the system, before removing it. All coolant level top-ups must be performed with engine inoperative or at low idle, if warm
- ◇ Do not run engine when refuelling and use care if the engine is hot due to the increased possibility of a fire if fuel is spilled.
- ◇ Never attempt to check or adjust fan belts when engine is running. Do not adjust engine fuel pump when machine is moving.
- ◇ Never lubricate the machine with engine running.
- ◇ **IMPORTANT:** In accordance with directives no. 2000/25/EC of the European Union and no. 40 CFR Part. 89 of the U.S.A. it is prohibited to make any type of alteration on the engine, including unloading uncertified software. Any alteration made on an engine or fuel supply system found not complying with current specifications involves: **legally**, that the engine is illegal in that market and is not protected by insurance, the warranty on the engine and supply system becomes void; in accordance with what declared by the certificates, the customer can be confronted by elevated costs for the reconditioning of the engine; **technically**, possible overloads on the engine components; possible premature wear of the engine due to excessive load on the components or the use of contaminated oil. Only personnel authorised by the Manufacturer can perform repairs on the fuel supply system. Repairs can be performed only using the specifications provided by the Manufacturer.

ELECTRICAL SYSTEM

- ◇ Should booster batteries be used, remember to connect both ends of the booster cables in the proper manner (+) with (+) and (-) with (-). Avoid short-circuits of the terminals. Follow thoroughly the instructions of this Manual. Avoid short circuiting the terminals. **BATTERY GAS IS HIGHLY FLAMMABLE.** Leave battery box open to improve ventilation when recharging batteries. Never check charge by placing metal objects across the posts. Keep sparks or open flames away from batteries. Do not smoke near battery to guard against the possibility of causing an explosion.
- ◇ Before any intervention, make sure that there are no fuel or electrolyte leakages; eliminate them before proceeding with further work.
- ◇ When recharging batteries in closed ambient, make sure that there is appropriate ventilation to prevent possible accidental explosions due to the accumulation of gases generated during the recharge.

- ◇ Before any intervention, make sure that the main switch is OFF.

HYDRAULIC SYSTEM

- ◇ Fluid escaping under pressure from a very small hole can be almost invisible and can have sufficient force to penetrate the skin. Use a piece of cardboard or wood to search for suspected pressure leaks. **DO NOT USE HANDS.** If injured by escaping fluid, see a doctor at once. Serious infection or reaction can develop if proper medical treatment is not administered immediately.
- ◇ In case pressures must be measured, use instruments of adequate capacity. Always follow the recommended procedures.

WHEELS AND TYRES

- ◇ Make sure that the inflation pressure of the tyres is according to the specifications issued by the Manufacturer and check it periodically.
- ◇ Should the pressure be changed, stand on the side of the tyre at a safe distance.
- ◇ Pressure check operations must be performed with unloaded machine and cold tyres. Never use reconditioned tyre rims, since eventual weldings, heat-treatments or repairs not performed correctly can weaken the wheel, thus causing subsequent damages or dangers.
- ◇ Do not perform torch cutting or welding operations on rims with inflated tyres installed.
- ◇ Before operating on tyres, block all wheels, front and rear. After jacking the machine, block it with stands according to current safety rules and regulations.
- ◇ Before removing objects from the tyre tread, deflate it.
- ◇ Never inflate tyres with flammable gas; explosions and serious bodily injuries may result.

REMOVALS AND INSTALLATIONS

- ◇ Lift and handle all heavy parts with lifting devices of adequate capacity. Make sure that the parts are attached to lifting devices are properly slinged. Use the lifting eyes provided. Beware of persons in the vicinity.
- ◇ Handle all parts carefully. Keep hands and fingers away from structures, gears or moving parts. Use and wear always the appropriate protections, such as goggles, gloves and safety shoes.
- ◇ Prevent chains and cables from kinking. To handle them, always use heavy gloves.

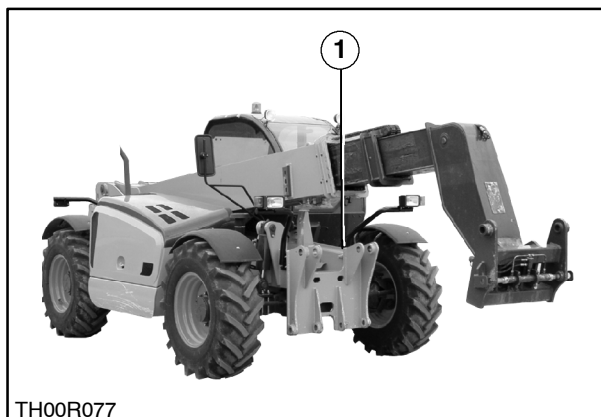
PRODUCT IDENTIFICATION

The Telehandler and its main components are identified by various numbers and letters providing its identification by the Service network. The following information gives the location of the identification plates, of the numbers stamped on the machine and various examples of what can be found on the machine.

VEHICLE SERIAL NUMBER

The serial number (1) is stamped on the front part of the machine, on the upper side of the main frame, right side.

NOTE: The serial number and the identification number of the components can be requested by the Dealer when Spare Parts are ordered or interventions are required. These numbers are also required as help in identifying the machine in the event of theft. Keep them in a safe place.



TH00R077

1



VEHICLE IDENTIFICATION PLATES

The vehicle identification plate is located on the left side of the seat location. Record here below the data for your machine.

TECHNICAL TYPE/MODEL _____

SERIAL NO. OF VEHICLE _____

YEAR _____

 CNH Italia S.p.A. Viale delle Nazioni, 55 - 41100 Modena - Italy	
Model/Type _____	
Approval/Homologation n° _____	
Product Identification Number ☆ _____ ☆	
Total permissible mass	Kg
Permissible front axle load	Kg
Permissible rear axle load	Kg
Permissible towable mass	Kg
Engine power	kW
Year of construction _____	
MADE IN ITALY 	

TH00R011

2

IDENTIFICATION OF ENGINE

F4GE9484F*J600



101 HP (74 Kw) with Aftercooler

The identification data of the engine are located on the right side of the engine crankcase. Record the information below for quick reference in case of necessity.

MODEL No. _____

SERIAL No. _____

DATE CODE _____

 CNH U.K. LIMITED	
ENGINE TYPE	_____
ENGINE FAMILY	_____
EEC APPR. N°	_____
	_____

SERIAL NUMBER	_____

TH001272

3

CNH U.K. LIMITED IMPORTANT ENGINE INFORMATION			
EPA family	Model	Date of MFG (mo yr)	
Displac. <input type="text"/> cu. in.	Adv. H. P. <input type="text"/> r. p. m.	Idle speed <input type="text"/> r. p. m.	
Fuel rate @ adv. pow. <input type="text"/> mm ³ /Str.	Valve lash: Intake <input type="text"/> Exhaust <input type="text"/>		
This engine conforms to <input type="text"/> U. S. EPA & CARB regulations for large <input type="text"/> <input type="text"/>			
non-road compression ignition engines. This engine is certified to operate on diesel fuel			
When making adjustments, set parking brake and block wheels. EMISSION CONTROL SYSTEM: <input type="text"/> EM TC SPL			
504078288			

TH001273

4

FRONT AXLE IDENTIFICATION

The serial number and axle type is printed on the plate (1) located on the front of the axle housing. Record the information below for quick reference in the case of necessity.

AXLE TYPE _____

SERIAL No. _____

DATE CODE _____

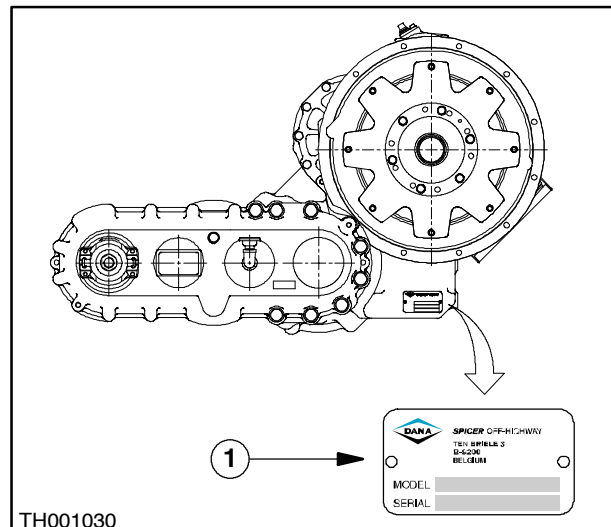
4x3 POWER SHIFT TRANSMISSION IDENTIFICATION

The serial number and type is printed on the plate (1), on the lower side of the transmission. Record the information below for quick reference in the case of necessity.

MODEL No. _____

SERIAL No. _____

DATE CODE _____



TH001030

5

IDENTIFICATION OF REAR AXLE

The serial number is indicated on plate (1) secured on the rear transmission housing. Copy here the serial number, for a prompt consultation in case of necessity.

AXLE TYPE _____

SERIAL No. _____

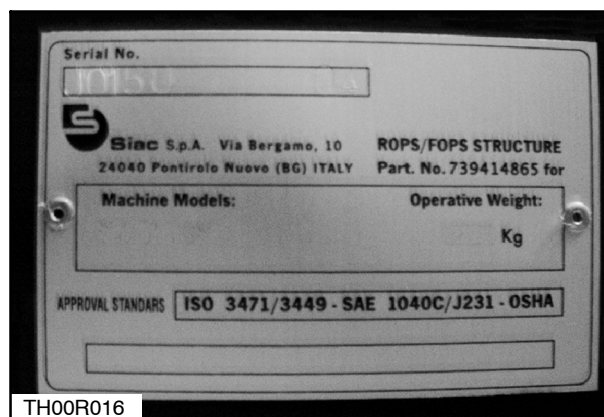
DATE CODE _____

IDENTIFICATION OF CAB

The cab identification plate includes the serial number and additional data and is located on the front side of the seat. Please copy here below the serial number for a prompt consultation in case of necessity.

SERIAL No. _____

DATE CODE _____



ENVIRONMENTAL CONSIDERATIONS

The following recommendations can be useful:

- Become familiar and make sure you have well understood the relevant legislation in effect in your country.
 - In the event no regulations exist, ask for specific information with the suppliers of lubricants, anti-freeze and detergents regarding their effects on humans and the environment and how to store, handle and dispose of these substances safely.
4. Avoid spillage when draining used coolant mixtures, engine oils, transmission and hydraulic fluids, brake fluid. After draining, do not mix brake fluid or fuel with lubricants. Store them in a risk free manner until when they can be disposed of in an adequate way, in accordance with local regulations and the resources available.
 5. Modern cooling mixtures, such as antifreeze and other additives, must be changed every two years. Maximum attention must be paid to prevent that they spill over the ground. They must be collected and disposed of so that do not create any danger.

Useful indications

6. Do not unseal air conditioning system by yourselves, since they can contain gases that must not be released into the atmosphere. The personnel specialised in air conditioners uses special equipment to charge and discharge air conditioning systems.
 7. Repair at once any leakage or defect of the engine cooling system or hydraulic system.
1. Do not fill tanks with inadequate canisters or dispensing pressurised systems that could cause considerable spillage.
 2. In general, avoid the contact of the skin with any fuel, oil, acid, solvent etc. The majority of them contain substance dangerous for your health.
 3. Modern lubricants contain additives. Do not burn contaminated fuels and/or used oils in normal heating burners.
 8. Do not increase the pressure of any pressurised system, since this could cause serious problems to the components of the system.
 9. Protect hoses when performing any welding, since a splash of welding materials could penetrate and burn them, causing a hole or weakening the wall with subsequent leakages of oil, coolant etc.

MAINTENANCE TECHNIQUES

GENERAL NOTICES

Clean the outside of all the components prior to performing any type of repair. Dirt and abrasive dust can reduce the efficient life expectancy of a component and result in expensive repairs.

The time spent in preparing and cleaning working surfaces is giving results, making work easier and safer, and the components overhauled will be more reliable and operate better.

Use cleaning fluids proven to be safe. Some types of fluid can cause serious problems to O-Rings and irritate the skin. It is necessary to check that the solvents are suitable to clean the components and that of they are free of risks for the health of workers.

Replace O-Rings, sealing rings and seals every time they are moved. Never use old O-Rings or seals and new ones together, independently from their conditions. Always lubricate new O-Rings and seals with hydraulic oil before installing them.

When replacing components, always use the tooling required by this type of work.

HOSES AND STEEL PIPES

Always replace hoses and steel pipes when the taper end or connections are damaged.

When a new hose is installed, connect it without tightening the ends and make sure that it is routed in the correct manner, before tightening the ends. Fixtures must be tightened just enough to hold the hose without squeezing it, avoiding rubbing as well.

After replacing a hose of moving components, make sure that the hose is not disturbed by the movement of the component in any position.

Make sure that all hoses installed are not choked or bent.

If hose connections are damaged, dented, choked or leaking, decrease the flow of oil and the productivity of the relevant actuators. Connections showing signs of displacement from their original pre-pressed position must be considered as already broken, since they are going to fail or separate soon.

A hose with a ragged outer sleeve allows water to penetrate. Thus, hidden corrosion of the reinforcing wire will develop along the entire length of the hose, with the subsequent failure of the hose itself.

If a hose swells, this indicates that there is an internal leakage due to a structural failure. This condition deteriorates very quickly and causes the failure of the hose.

Clogged, squeezed, excessively tensioned or deformed hoses are generally easily subject to flow reduction, decrement of the operational speed of the fluid and the final failure of the hose.

Loose hoses move freely and must be prevented from touching each other and nearby surfaces. This causes a rubbing action shortening the useful life of the hose.

CONNECTIONS WITH FRONT SEALING O-RINGS

When repairing connections with front sealing O-Rings, please comply with the following procedures.



WARNING: NEVER DISCONNECT, NOR TIGHTEN A HOSE OR A STEEL PIPE UNDER PRESSURE. IF IN DOUBT, MOVE THE CONTROL LEVERS SEVERAL TIMES WITH THE ENGINE INOPERATIVE BEFORE DISCONNECTING A HOSE OR A STEEL PIPE.

1. Loosen the connections and separate the hose or steel pipe, then remove and eliminate the O-Rings from the connection.
2. Dip a new O-Ring in clean, hydraulic oil before installing it. Install the new O-Ring in the connection and, if necessary, hold it in its position with vaseline.
3. Install a new hose or steel pipe and tighten manually the connection holding, at the same time, the pipe still to prevent it from turning.
4. Use two wrenches to tighten the connection to the torque prescribed for its size. Please refer to the table to follow for the tightening torques.

NOTE: to ensure that a joint does not leak, it is important that the connections are neither excessively tightened nor too little.

SPECIFIC SEALING COMPOUNDS

The following sealing compounds must be used, complying with the indications provided by the Manual:

SEALANTS

COMMERCIAL NAME

Anaerobic sealant

LOCTITE 518 (liquid gasket)

RTV silicon sealant

LOCTITE SUPERFLEX 593,595 or 596
LOCTITE ULTRA BLUE 587 DOW CORNING SILASTIC
732 GENERAL ELECTRIC RTV 103 or 108

Pipe sealant

PST 592 (pipe sealant with teflon)

Locking compound for boom
pads screw threads

LOCTITE 243/BUE

TIGHTENING VALUES FOR FASTENERS

Check periodically that the fasteners are properly tightened.

Based upon the tables to follow, determine the correct tightening torque when parts of the fastening components are checked, adjusted or replaced.

IMPORTANT: *DO NOT* use the values listed in the tables when the Manual indicates a different torque

or tightening procedure for a specific application. The torque values are provided for general use only.

Make sure that the threads of the fasteners are clean and undamaged.

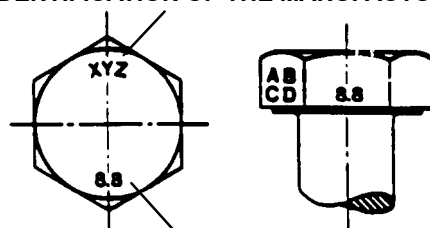
NOTE: *Use a torque wrench to tighten fasteners correctly.*

MINIMUM TIGHTENING TORQUES FOR FASTENERS
IN NEWTON-METRES (Nm)
FOR NORMAL INSTALLATION APPLICATIONS
METRIC BOLTS AND LOCK NUTS

NOMINAL DIMENSION	CLASS 5.8		CLASS 8.8		CLASS 10.9		LOCK NUT CL. 8 with BOLT CL. 8.8
	NOT PLATED	PLATED Zn/Cr	NOT PLATED	PLATED Zn/Cr	NOT PLATED	PLATED Zn/Cr	
M4	1.7	2.2	2.6	3.4	3.7	4.8	1.8
M6	5.8	7.6	8.9	12	13	17	6.3
M8	14	18	22	28	31	40	15
M10	28	36	43	56	61	79	30
M12	49	63	75	97	107	138	53
M16	121	158	186	240	266	344	131
M20	237	307	375	485	519	671	265
M24	411	531	648	839	897	1160	458

IDENTIFICATION
HEX SCREWS (WITHOUT NUT) AND ROUND HEAD BOLTS
CLASS 5.6 AND HIGHER

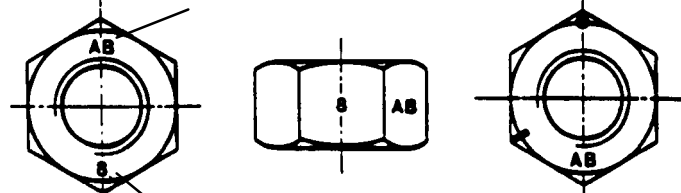
IDENTIFICATION OF THE MANUFACTURER



COMMERCIAL CLASS

HEX NUTS AND TIGHTENING NUTS
CLASS 05 AND HIGHER

IDENTIFICATION OF THE MANUFACTURER



COMMERCIAL CLASS

MARKING

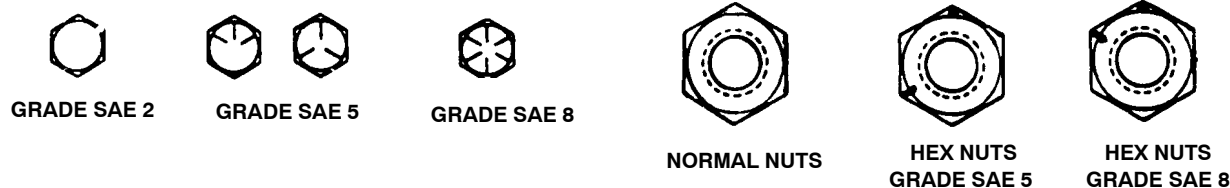
MINIMUM TIGHTENING TORQUES FOR FASTENERS

IN NEWTON-METRES (Nm)
FOR NORMAL INSTALLATION APPLICATIONS

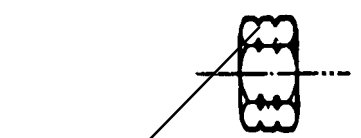
INCH MEASUREMENT SCREWS AND LOCK NUTS

NOMINAL DIMEN.	GRADE SAE 2		GRADE SAE 5		GRADE SAE 8		LOCK NUTS		NOMINAL DIMEN.
	NOT PLATED OR SILVER PLATED	PLATED Zn/Cr GOLD	NOT PLATED OR SILVER PLATED	PLATED Zn/Cr GOLD	NOT PLATED OR SILVER PLATED	PLATED Zn/Cr GOLD	NOT PLATED OR SILVER PLATED	PLATED Zn/Cr GOLD	
1/4	6,2	8,1	9,7	13	14	18	6,9	9,8	1/4
5/16	13	17	20	26	28	37	14	20	5/16
3/8	23	30	35	46	50	65	26	35	3/8
7/16	37	47	57	73	80	104	41	57	7/16
1/2	57	73	87	113	123	159	61	88	1/2
9/16	81	104	125	163	176	229	88	125	9/16
5/8	112	145	174	224	244	316	122	172	5/8
3/4	198	256	306	397	432	560	217	306	3/4
7/8	193	248	495	641	698	904	350	494	7/8
1	289	373	742	960	1048	1356	523	739	1

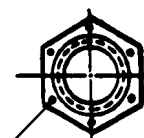
IDENTIFICATION SCREWS (WITHOUT NUT) AND ROUND HEADED SCREWS



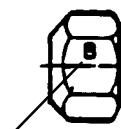
LOCK NUTS



GRADE IDENTIFICATION
GRADE A: NO CUTS
GRADE B: ONE PERIMETER CUT
GRADE C: TWO PERIMETER CUTS



GRADE IDENTIFICATION
GRADE A: NEW MARK
GRADE B: THREE MARKS
GRADE C: SIX MARKS
THE MARKS ARE NOT
COMPULSORILY LOCATED IN THE
CORNERS



GRADE IDENTIFICATION

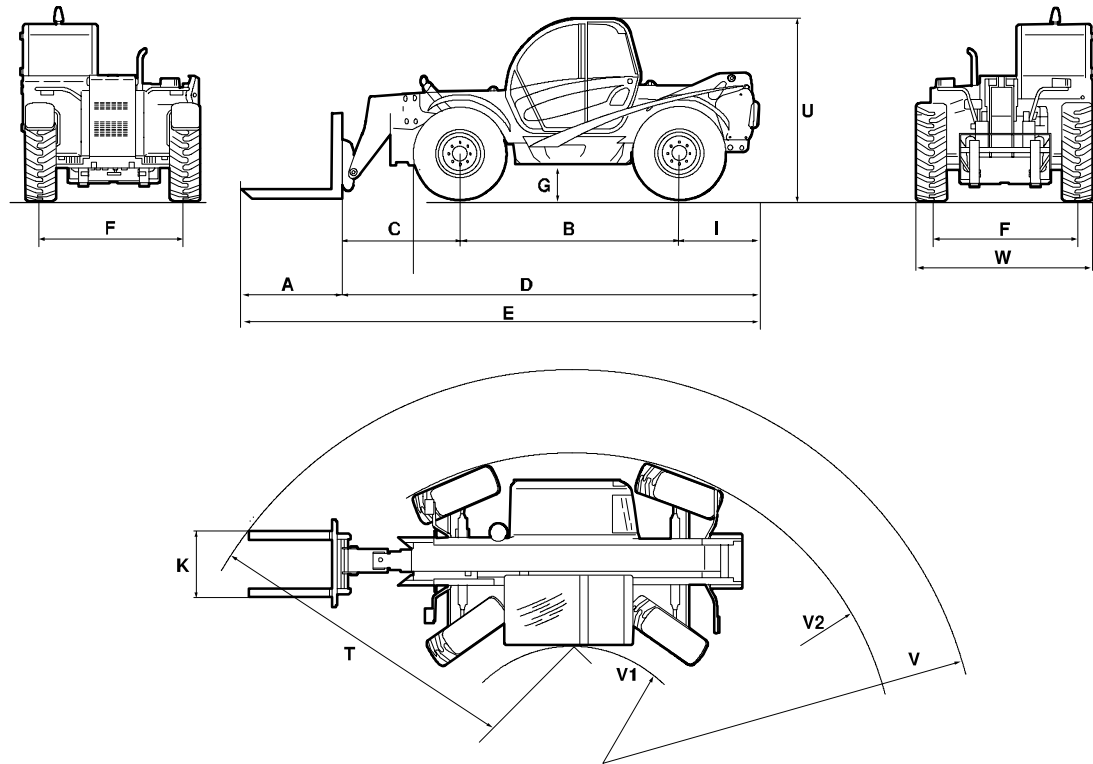
GRADE A: NO MARKS
GRADE B: LETTER B
GRADE C: LETTER C

GENERAL

NOTE: "The Manufacturer" pursues a policy of constant improvements, thus reserves the right to modify at any moment technical and design data, without notice, and without any obligation to modify the machines previously manufactured.

All the data provided in this Manual are subject to variations in production. Dimensions and weights are approximate and the illustrations do not necessarily show the machines in normal conditions. In order to have specific information about a determined machine, please consult an Authorised Dealer.

Model	LM1330	
	LM1330	
	no stab.	Small stab.
Engine	74 kW Turbocharged with aftercooler	
Max. lifting height (m)	12.750	13.060
Max. capacity (kg) a 500 mm from fork stop	3.300	3.300
Capacity at max. height (kg)	2.500	3.300
Extension at max. height (m)	1.800	1.800
Max. longitudinal extension (m)	8.750	
Capacity at max. extension (kg)	650	1.350
Weight (kg)	9.600	
Length (m)	5.950	



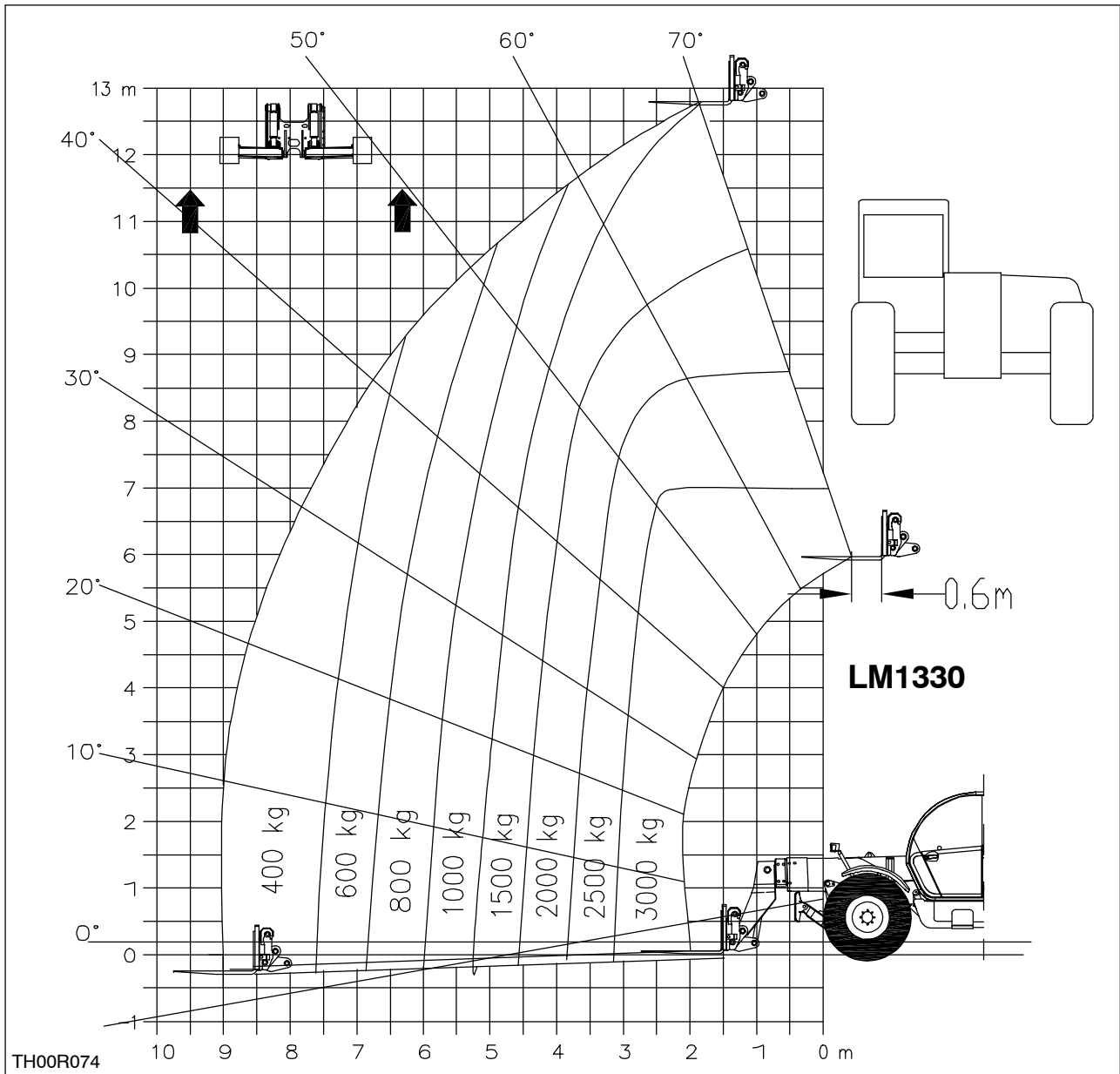
TH00R012

1

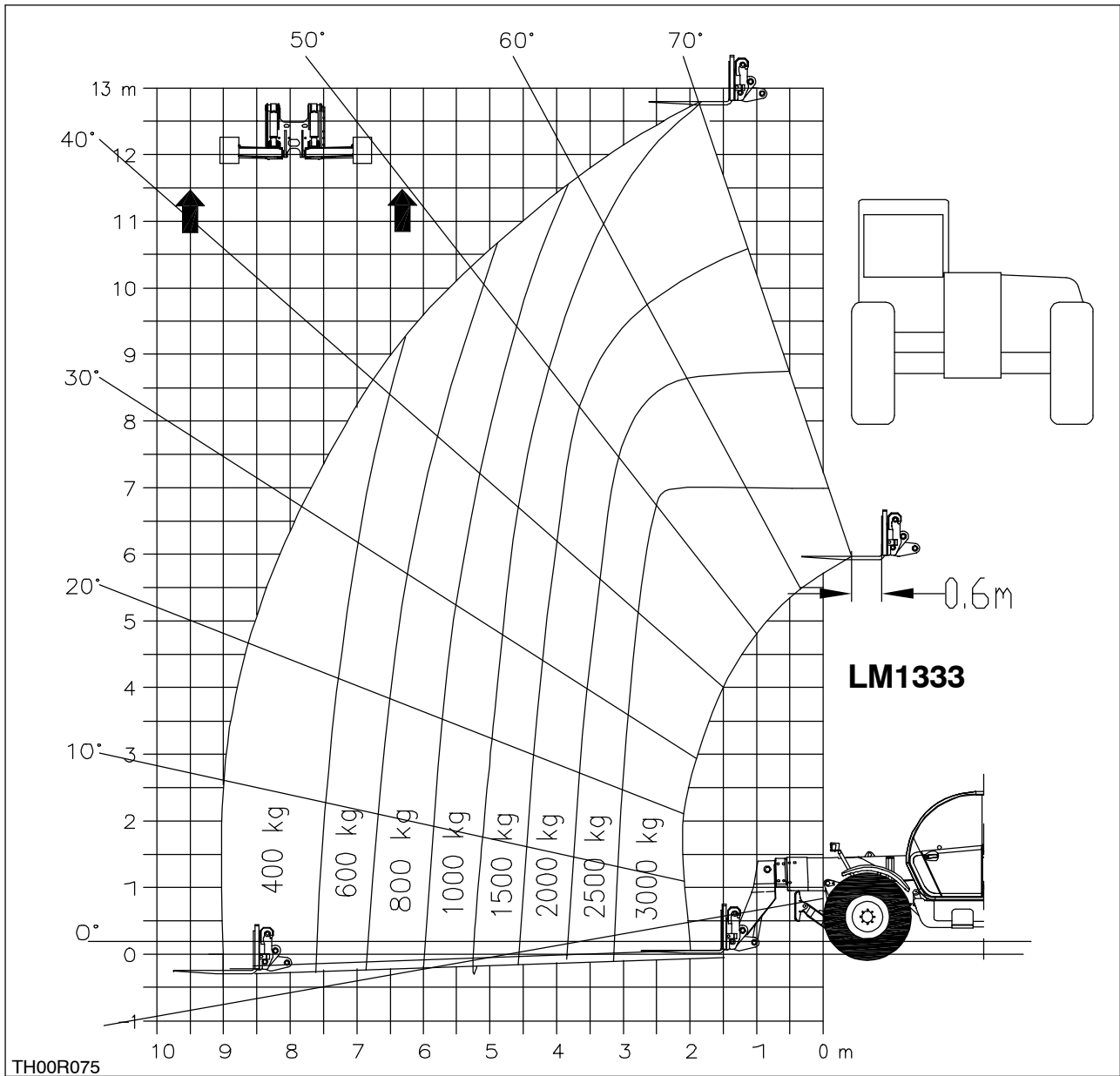
LM1330
LM1333

A	1200 mm	K	1260 mm
B	3120 mm	T	4396 mm
C	2145 mm	U	2730 mm
D	6345 mm	V	5204 mm
E	7545 mm	V ₁	980 mm
F	2036 mm	V ₂	3890 mm
G	402* mm	W	2445 mm
I	1080 mm		

* Value measured with tyres 405/70x24

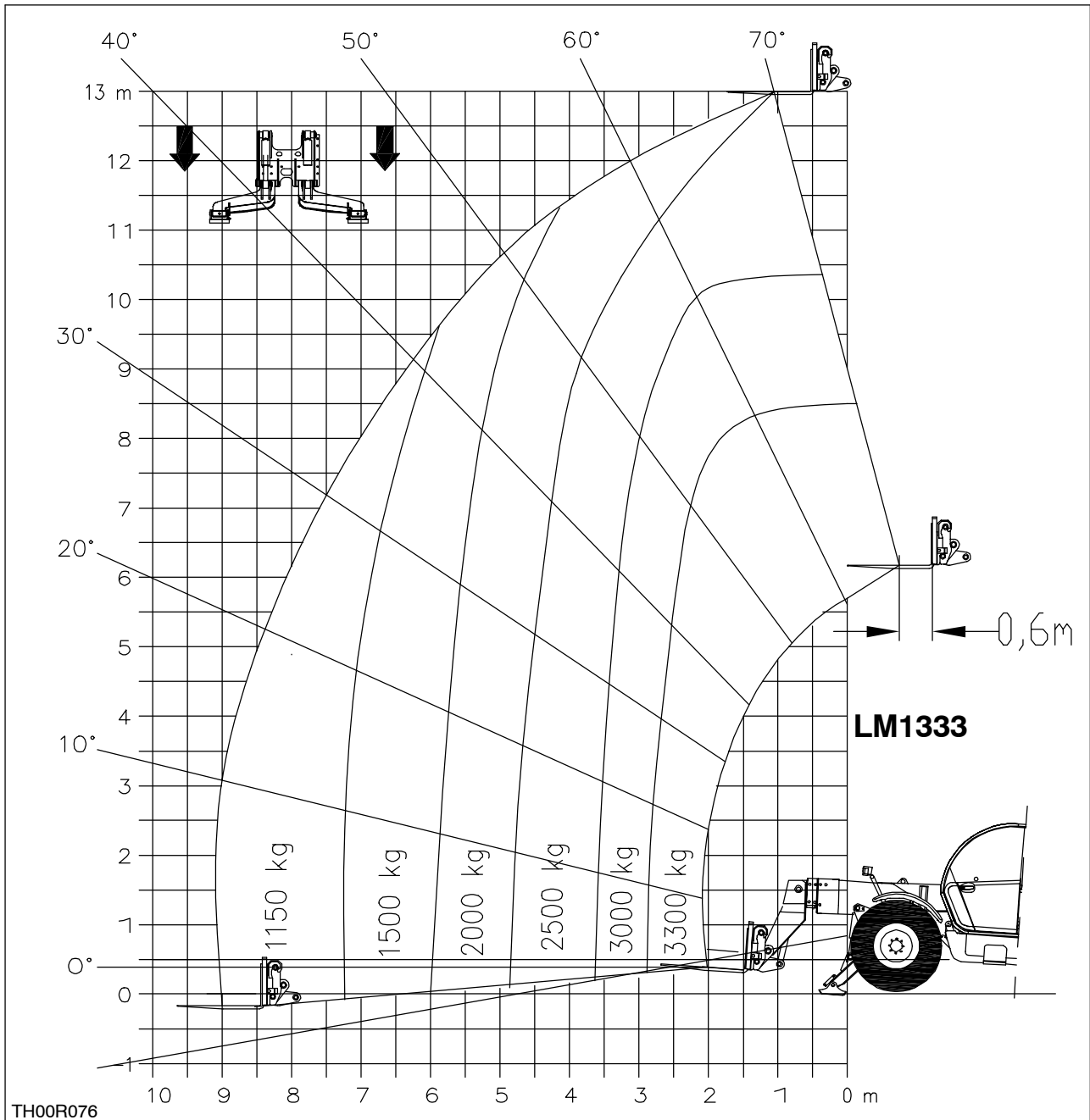


LM1330 (without stabilisers)



3

LM1333 (with small stabilisers raised)



LM1333 (with small stabilisers lowered)

ENGINE DATA

		74 kW (101 HP) Turbocharged with aftercooler
Model		Diesel
Number of cylinders		4 in-line
Bore	mm	104
Stroke	mm	132
Displacement	cm ³	4485
Total displacement		17,5 : 1
Firing order		1.3.4.2
Low idle	rpm	1000-1050
Max. idle	rpm	2300-2400
Nominal speed	rpm	2200
Maximum torque		515 Nm

COOLING SYSTEM

Type	Pressurised, full-flow, w/ by-pass With expansion chamber
Fan	7 blades
Fan belt deflection	10 - 16 mm
Drive belt deflection	
Air conditioner compressor	16 mm
Thermostat:	
Starts opening at	81 °C
Radiator cap	1 bar

INTAKE SYSTEM

Injection pump	
Type	Rotary
Cold start device	Thermostart
Excess fuel device	Automatic governor
Fuel shut off	Solenoid
Lift pump	Mechanical

TRANSMISSION

POWERSHIFT – VD T12000 4x3 = 4 speeds forward and 3 reverse

Speed	Ratio
I	4.025
II	2.048
III	1.000
IV	0.662

ELECTRICAL SYSTEM

Alternator	65 amp.
Type of battery	12 Volt grounded negative
Optional	160 Amph
Battery cut-off by switch	on negative/frame cable
Regulator	Transistor
Ground	Negative
Starter motor	Positive engagement, electrically controlled (3.1 kW)
Light bulb	40/45W
Stop light/tail light	5/21 W with bayonet socket
Outer light bulb	5 W (string) 10 W bayonet socket
Flashing light bulb	21 W with bayonet socket
Work light bulb	55W H3 halogen
Instrument/indicator lights bulb	1.2 W w/out socket
Switch light bulb	1.2 W w/out socket

BRAKES

Type	Oil-bath, multiple disc. 8 per axle
Disc diameter	203.2mm
Type of parking brake	Mechanical, disc on transmission

STEERING

Steering type	Orbitrol
Pump type	Gear
System pressure	175 bar
Wheel toe-in	0 – 2mm

FRONT AXLE

Mounted on front frame	Swinging with levelling cylinder
Differential lock	No

REAR AXLE

Mounted on frame	Floating with swing and automatic locking when boom angle exceeds 10°
------------------	---

HYDRAULIC SYSTEM

Gear pump	Hydraulic and steering system
Hydraulic system pressure:	
Main system pressure	250 bar
Steering system pressure	175 bar

TORQUES

Nm

Wheel nuts	540
Cab securing screws	380

RADIATOR COOLANT

NOTE: To reduce deposits and limit corrosion, the water used in the cooling system must not exceed the following limits:

Total hardness	Chloride	Sulphates
300 ppm	100 ppm	100 ppm

TYRE COMBINATION FOR 4-WHEEL DRIVE VEHICLES

The tyres mounted on 4-wheel drive machines are selected so that they are compatible with the transmission and axle gears. When damaged or worn tyres are replaced, always mount tyres of brand, model and dimension equal to the previous ones. The installation of combined tyres can result in an excessive wear, loss of available power or serious damage to the transmission components. If in doubt, consult your Dealer.

MACHINE WEIGHT

LM1330

Weight = 9,400 kg

LM1333

Weight = 9,600 kg



TH00R009

5

IMPORTANT: The data listed here above and below are general data provided as a guide to evaluate the weight of the machine and do not necessarily consider the tyres installed, the level of fluids or the presence of additional equipment. To establish precisely the weight of your machine, it is necessary to place it on an official weight bridge.

The data listed here above correspond to the "approximate weight" of a standard machine, without equipment.

TYRE PRESSURES

The tables are provided for reference only. For specific information relative to inflation pressures and the load of the tyres used, please consult your Dealer.

Axle	Tyre	Speed (kmph) (mph)	Inflation pressure (bar)	Rolling circumf. (m)	Capacity (kg)	
					wheel	axle
FRONT	400/80-24 T37	50	4.25	3.825	3650	7300
	405/70-24 14PR TL MPT-01	40	4.0	3.465	3885	7770
	15R22.5 XF TL (H)	39	6.5	3.390	3620	7240
	405/70-24 14PR TL MPT 4L I3	35	4.5	3.544	4005	8010
	405/70-24 14PR TL MPT R-1	40	4.5	3.593	4005	8010
	405/70-20 14PR TL MPT R-1	40	5.5	3.220	3790	7580
	405/70-20 14PR TL MPT 4L I3	35	5.5	3.183	3790	7580
	405/70-20 14PR TL MPT-01	40	3.5	3.165	3575	7150
	400/80-24 T37	50	4.25	3.825	3650	7300
	405/70-24 14PR TL MPT-01	40	4.0	3.465	3885	7770
REAR	15R22.5 XF TL (H)	39	6.5	3.390	3620	7240
	405/70-24 14PR TL MPT 4L I3	35	4.5	3.544	4005	8010
	405/70-24 14PR TL MPT R-1	40	4.5	3.593	4005	8010
	405/70-20 14PR TL MPT R-1	40	5.5	3.220	3790	7580
	405/70-20 14PR TL MPT 4L I3	35	5.5	3.183	3790	7580
	405/70-20 14PR TL MPT-01	40	3.5	3.165	3575	7150
	405/70-20 14PR TL MPT-01	40	3.5	3.165	3575	7150

* The pressures listed refer to inflation for site use.

TELEHANDLER TELESCOPIC LIFTER

LUBRICANTS AND COOLANTS

Engine oil correct viscosity grade depends on ambient temperature. Refer to the table on the right for selecting engine oil for your machine.

NOTE: In areas with long periods of extreme temperature, local lubrication procedures are admissible, such as using SAE 5W30 where there are extremely low temperatures or SAE 50 where there are extremely high temperatures.

Sulphur contents in fuel.

Engine oil replacement interval is shown in Section 3. Local fuel can however have a high sulphur content: in this case engine oil replacement interval must be changed as follows:

Sulphur contents in % Oil replacement interval

Below 0.5

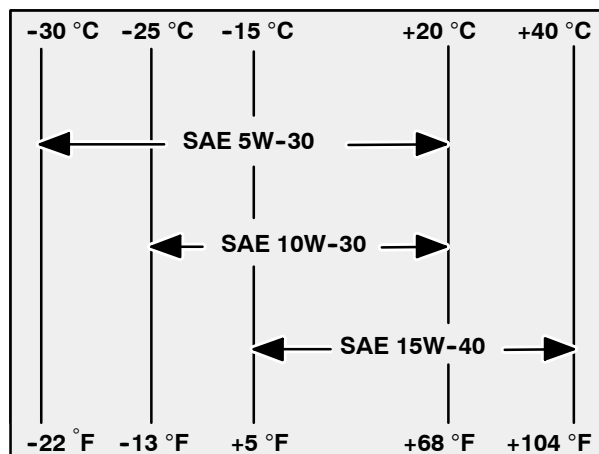
Normal

0.5 to 1.0

Half the normal

Over 1.0

One fourth the normal.



NOTE: It is advised to use fuel with sulphur contents below 1.3%.

SUGGESTED FLUIDS AND THEIR APPLICATION	International Specification	Quantity	Ambient Temperature (°C)
Oil – ENGINE Ambra Mastergold HSP 15W-40	API CH-4 ACEA E5	7.6 litres (including engine oil filter)	From -10 to +50
Oil – POWERSHIFT TRANSMISSION Hydropower 10W Ambra		12.9 + 4 litres (lines and radiator)	
Oil – FRONT AND REAR AXLE Ambra AXF 80W-90		7 litres	From -20 to +50
Oil – DROP BOX Ambra Hypoide LS 90 80W90	API GL5	0.75 litres	
Oil – FRONT/REAR AXLE HUB Ambra Hypoide LS 90 80W90	API GL5	0.65 litres	
Oil – FRONT LOADER HYDRAULIC SYSTEM MULTIG Ambra 10W30	ISO VG 32/46	185 litres	From -20 to +50
ENGINE RADIATOR Water Ambra Agriflù	H ₂ O	12 litres 12 litres	From -35 to +50
Oil –BRAKE CONTROL CIRCUIT Ambra Brake LHM	M6C 59-A	1 litre	
ARM PADS – Grease Ambra GR9	NLGI 2	As required	From -40 to +50
GENERAL – GREASE Ambra GR9	NLGI 2	As required	From -40 to +50
CONDITIONER COMPRESSOR R134a			
FUEL Diesel Fuel		135 litres	

NOTE: Fluid and lubricant quantities are meant as overall. Drained fluid or lubricant quantities might not correspond to those stated because part of the oil or fluid could be trapped by some machine components.