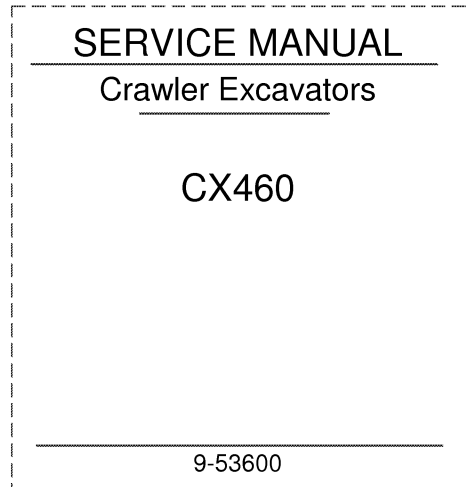


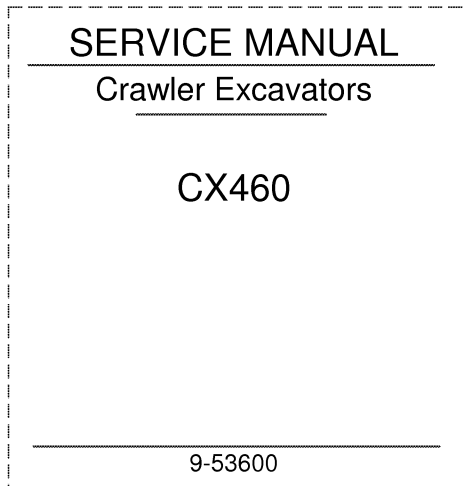
1. Trim along dashed line.
2. Slide into pocket on Binder Spine.

TYPE 1-4



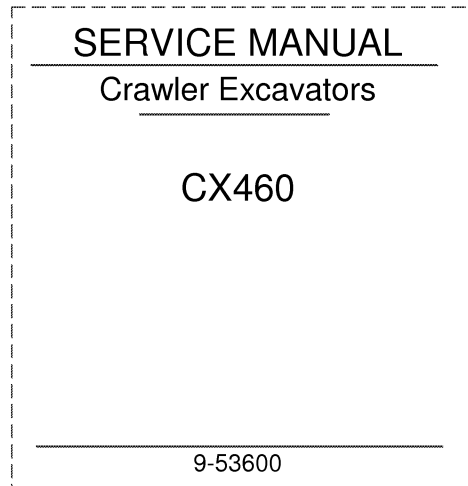
1. Trim along dashed line.
2. Slide into pocket on Binder Spine.

TYPE 1-4



1. Trim along dashed line.
2. Slide into pocket on Binder Spine.

TYPE 1-4



1. Trim along dashed line.
2. Slide into pocket on Binder Spine.

TYPE 1-4

# CX460 Crawler Excavators

Product: 2003 Case CX460 Crawler Excavator Service Manual 9-53601  
 Full Download: <https://www.arepairmanual.com/downloads/2003-case-cx460-crawler-excavator-service-manual-9-53601/>

## Table of Contents

DIVISION/SECTION	SECTION N°	REFERENCE N°
<b>1 GENERAL INFORMATION</b>		
Safety, general information and standard torque data .....	1001	9-53360
General specifications and special torque setting .....	1002	9-53800
<b>2 ENGINE</b>		
Removal and installation of the engine .....	2000	9-54180GB
Radiator and oil-cooler .....	2001	9-43480GB
Engine specifications .....	*	
Disassembly and assembly of the engine .....	*	
<b>3 FUEL SYSTEM</b>		
Fuel tank .....	3001	9-43470GB
Fuel engine system .....	*	
<b>4 ELECTRICAL SYSTEM</b>		
Electrical system, electrical and electronic troubleshooting .....	4001	9-57920
Inspection and maintenance of batteries and connecting a booster battery .....	4002	9-43460GB
Main and engine electronic control boxes .....	4003	9-43450GB
<b>5 UNDERCARRIAGE</b>		
Removal and installation of tracks .....	5001	9-42910GB
Rollers .....	5003	9-44830GB
Sprocket .....	5004	9-36890GB
Idler wheel and tension shock absorber .....	5005	9-44820GB
<b>6 DRIVE TRAIN</b>		
Drive motor and final drive transmission removal and installation .....	6001	9-43140GB
Swing reduction gear, removal and installation .....	6003	9-44810GB
Swing reduction gear, disassembly and assembly .....	6004	9-44590GB
Travel reduction gear assembly and disassembly .....	6005	9-53710GB
<b>7 UNDERCARRIAGE HYDRAULICS</b>		
<b>8 UPPERSTRUCTURE HYDRAULICS</b>		
Depressurising and decontaminating the hydraulic system, use of the vacuum pump and bleeding the components .....	8000	9-44560GB
Specifications, troubleshooting, checks and hydraulic pressure settings .....	8001	9-53810
Hydraulic reservoir removal and installation .....	8002	9-43230GB
Main and pilot pumps, removal and installation .....	8003	9-53950GB
Main hydraulic control valve, removal and installation .....	8004	9-53990GB
Attachment cylinders, removal and installation .....	8005	9-43250GB
Hydraulic swivel, removal and installation .....	8006	9-43390GB
Pilot blocs, removal and installation .....	8007	9-53980GB
Swing motor, removal and installation .....	8008	9-53970GB
Free swing disassembly and assembly .....	8009	9-35530
Main hydraulic pump, disassembly and assembly .....	8010	9-43330GB
Main hydraulic control valve, disassembly and assembly .....	8011	9-54310GB
Attachment cylinders, disassembly and assembly .....	8012	9-53690GB
Hand control levers, disassembly and assembly .....	8013	9-54000GB
Foot control levers, disassembly and assembly .....	8014	7-28210GB
Six-solenoid valves, disassembly and assembly .....	8015	9-54050GB
Caution valve, disassembly and assembly .....	8016	7-27942GB
Anti hose burst valve .....	8017	9-54100GB
Hydraulic swivel, disassembly and assembly .....	8018	9-43190GB
Swing motor, disassembly and assembly .....	8019	9-54140GB
Hydraulic functions .....	8020	9-42740GB
Travel hydraulic motor, disassembly and assembly .....	8021	9-43160GB

Sample manual. Download All pages at:

<https://www.arepairmanual.com/downloads/2003-case-cx460-crawler-excavator-service-manual-9-53601/>

DIVISION/SECTION	SECTION N°	REFERENCE N°
<b>9 UPPERSTRUCTURE</b>		
Upperstructure, turntable and counterweight.....	9002	9-43410GB
Boom, dipper and bucket.....	9003	9-53280GB
Seat and seat belt.....	9004	9-40960GB
Cab and cab equipment.....	9005	9-53410GB
Air conditioning troubleshooting.....	9006	██████████
Air conditioning unit disassembly and assembly.....	9007	██████████
Air conditioning servicing.....	9008	██████████
Air conditioning components.....	9009	██████████
Attachment reinforcement procedures.....	9012	9-43930
Large format hydraulic and electrical schematics.....	Pocket	9-43180

\* Consult the Engine Service Manual

██████████ Sections to be distributed at a later date

NOTE: CNH Company reserves the right to make changes in the specification and design of the machine without prior notice and without incurring any obligation to modify units previously sold.

The description of the models shown in this manual has been made in accordance with the technical specifications known as of the date of design of this document.

# Section 1001

**SAFETY, GENERAL INFORMATION**

## TABLE OF CONTENTS

GENERAL INFORMATION .....	3
SAFETY .....	4
STANDARD TORQUE DATA FOR CAP SCREWS AND NUTS.....	6

## GENERAL INFORMATION

### Cleaning

Clean all metal parts except bearings, in a suitable cleaning solvent or by steam cleaning. Do not use caustic soda for steam cleaning. After cleaning, dry and put oil on all parts. Clean oil passages with compressed air. Clean bearings in a suitable cleaning solvent. Dry the bearings completely and put oil on the bearings.

### Inspection

Check all parts when the parts are disassembled. Replace all parts that have wear or damage. Small scoring or grooves can be removed with a hone or crocus cloth. Complete a visual inspection for indications of wear, pitting and the replacement of parts necessary to prevent early failures.

### Bearings

Check bearings for easy action. If bearings have a loose fit or rough action, replace the bearing. Wash bearings with a suitable cleaning solvent and permit to air dry. DO NOT DRY BEARINGS WITH COMPRESSED AIR.

### Needle Bearings

Before you press needle bearings in a bore always remove any metal protrusions in the bore or edge of the bore. Before you press bearings into position, put petroleum jelly on the inside and outside diameter of the bearings.

### Gears

Check all gears for wear and damage. Replace gears that have wear or damage.

### Oil Seals, O-rings and Gaskets

Always install new oil seals, O-rings and gaskets. Put petroleum jelly on seals and O-rings.

### Shafts

Check all shafts that have wear or damage. Check the bearing and oil seal surfaces of the shafts for damage.

### Service Parts

Always install genuine Case service parts. When ordering refer to the Parts Catalog for the correct part number of the genuine Case replacement items. Failures due to the use of other than genuine Case replacement parts are not covered by warranty.

### Lubrication

Only use the oils and lubricants specified in the Operator's or Service Manuals. Failures due to the use of non-specified oils and lubricants are not covered by warranty.

## SAFETY



*This symbol means ATTENTION! BECOME ALERT! YOUR SAFETY IS INVOLVED. The message that follows the symbol contains important information about safety. Carefully read the message. Make sure you fully understand the causes of possible injury or death.*

To prevent injury always follow the Warning, Caution and Danger notes in this section and throughout the manual.

Place a "Do not operate" tag on the starter switch key before carrying out any service or repair work on the machine.



**WARNING:** *Read the operator's manual to familiarize yourself with the correct control functions.*



**WARNING:** *Operate the machine and equipment controls from the seat position only. Any other method could result in serious injury.*



**WARNING:** *This is a one man machine, no riders allowed.*



**WARNING:** *Before starting engine, study Operator's Manual safety messages. Read all safety signs on machine. Clear the area of other persons. Learn and practice safe use of controls before operating.*

*It is your responsibility to understand and follow manufacturers instructions on machine operation, service and to observe pertinent laws and regulations. Operator's and Service Manuals may be obtained from your Case dealer.*



**WARNING:** *If you wear clothing that is too loose or do not use the correct safety equipment for your job, you can be injured. Always wear clothing that will not catch on objects. Extra safety equipment that can be required includes hard hat, safety shoes, ear protection, eye or face protection, heavy gloves and reflector clothing.*



**WARNING:** *When working in the area of the fan belt with the engine running, avoid loose clothing if possible, and use extreme caution.*



**WARNING:** *When doing checks and tests on the equipment hydraulics, follow the procedures as they are written. DO NOT change the procedure.*



**WARNING:** *When putting the hydraulic cylinders on this machine through the necessary cycles to check operation or to remove air from a circuit, make sure all people are out of the way.*



**WARNING:** Use insulated gloves or mittens when working with hot parts.



**WARNING:** Lower all attachments to the ground or use stands to safely support the attachments before you do any maintenance or service.



**WARNING:** Pin sized and smaller streams of hydraulic oil under pressure can penetrate the skin and result in serious infection. If hydraulic oil under pressure does penetrate the skin, seek medical treatment immediately. Maintain all hoses and tubes in good condition. Make sure all connections are tight. Make a replacement of any tube or hose that is damaged or thought to be damaged. DO NOT use your hand to check for leaks, use a piece of cardboard or wood.



**WARNING:** When removing hardened pins such as a pivot pin, or a hardened shaft, use a soft head (brass or bronze) hammer or use a driver made from brass or bronze and a steel head hammer.



**WARNING:** When using a hammer to remove and install pivot pins or separate parts using compressed air or using a grinder, wear eye protection that completely encloses the eyes (approved goggles or other approved eye protectors).



**WARNING:** Use suitable floor (service) jacks or chain hoist to raise wheels or tracks off the floor. Always block machine in place with suitable safety stands.



**WARNING:** When servicing or repairing the machine, keep the shop floor and operator's compartment and steps free of oil, water, grease, tools, etc. Use an oil absorbing material and/or shop cloths as required. Use safe practices at all times.



**WARNING:** Some components of this machine are very heavy. Use suitable lifting equipment or additional help as instructed in this Service Manual.



**WARNING:** Engine exhaust fumes can cause death. If it is necessary to start the engine in a closed place, remove the exhaust fumes from the area with an exhaust pipe extension. Open the doors and get outside air into the area.

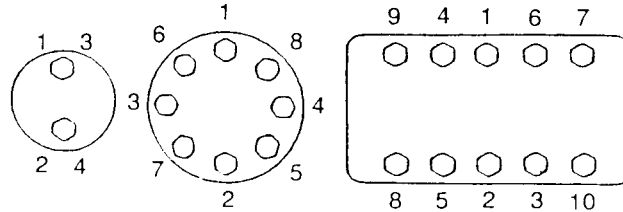


**WARNING:** When the battery electrolyte is frozen, the battery can explode if (1), you try to charge the battery, or (2), you try to jump start and run the engine. To prevent the battery electrolyte from freezing, try to keep the battery at full charge. If you do not follow these instructions, you or others in the area can be injured.

## STANDARD TORQUE DATA FOR CAP SCREWS AND NUTS

### Tightening of Cap Screws and Nuts

Tighten alternately so that tightening torque can be applied evenly. The numbers in the figure below indicate the order of tightening.



JS00481B

Cap screws which have had Loctite used (white residue remains after removal) should be cleaned with light oil or suitable cleaning solvent and dried. Apply 2-3 drops of Loctite to the thread portion of the cap screw and then tighten.

## Torque Table

Tighten cap screws and nuts according to the table below if there are no other special instructions.

Cap Screw Name Size			M6	M8	M10	M12	M14	M16	M18	M20
Cap Screw	Wrench size	[in.]	0.39	0.51	0.67	0.75	0.87	0.95	1.06	1.18
		[mm]	10	13	17	19	22	24	27	30
	Tightening torque	[lb-ft]	5.1	14.5	29.0	43.4	72.5	116.0	144.6	202.4
		[Nm]	6.9	19.6	39.2	58.8	98.1	157.2	196.0	274.0
Socket Head Cap Screw	Wrench size	[in.]	0.20	0.24	0.32	0.39	0.47	0.55	0.55	0.67
		[mm]	5	6	8	10	12	14	14	17
	Tightening torque	[lb-ft]	6.5	15.9	31.1	57.8	86.8	130.1	180.8	253.1
		[Nm]	8.8	21.6	42.1	78.4	117.6	176.4	245.0	343.0



# Section 1002

1002

## SPECIFICATIONS AND SPECIAL TORQUE SETTINGS

## TABLE OF CONTENTS

TYPE, SERIAL NUMBER AND YEAR OF MANUFACTURE OF THE MACHINE .....	3
Machine.....	3
Engine .....	3
Serial numbers of the components .....	3
INGREDIENTS .....	4
Hydraulic fluid chart .....	4
Transmission assembly oil .....	4
Greases .....	4
Engine oil .....	5
Viscosity of oils/Operating range of oils .....	5
Low fuel .....	6
Antifreeze/anticorrosive .....	6
Environment .....	6
Plastic and resin parts .....	6
SPECIFICATIONS.....	7
Engine .....	7
Capacities .....	7
Electrical system .....	7
Hydraulic system.....	8
Cylinder .....	8
Control valve .....	9
Swing .....	9
Travel .....	9
Undercarriage .....	9
Attachment.....	9
Weight of components .....	10
DIMENSIONS AND WEAR LIMIT OF THE TRACK ASSEMBLY .....	11
Sprocket .....	11
Idler wheel.....	12
Upper roller .....	13
Lower roller .....	14
Track .....	15
DIMENSIONS AND WEAR LIMITS OF ATTACHMENT LINKAGES .....	16
Boom foot/Frame .....	16
Boom cylinder foot/Frame .....	17
Boom cylinder head/Boom .....	17
Dipper cylinder foot/Boom.....	18
Boom/Dipper .....	18
Dipper cylinder head/Dipper.....	18
Bucket cylinder foot/Dipper .....	19
Connecting rod/Dipper .....	19
Compensator/Bucket.....	19
Connecting rod/Compensator/Bucket cylinder head.....	20
Dipper/Bucket.....	20
SPECIAL TORQUE SETTINGS .....	21
MACHINE OVERALL DIMENSIONS.....	24



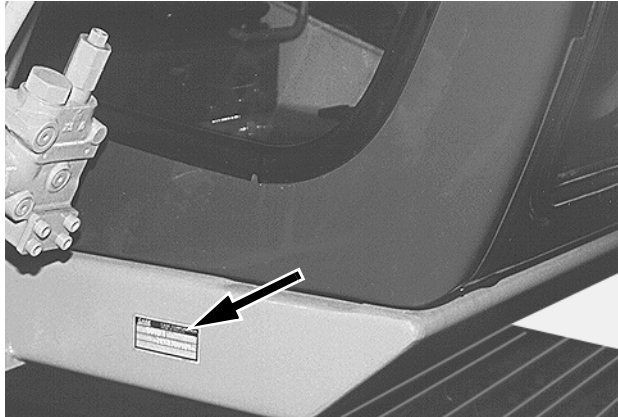
**WARNING:** *This symbol is used in this manual to indicate important safety messages. Whenever you see this symbol, carefully read the message which follows. Your safety depends on it.*

# TYPE, SERIAL NUMBER AND YEAR OF MANUFACTURE OF THE MACHINE

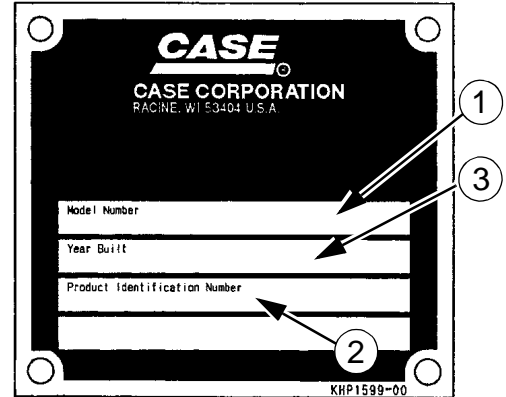
For all part orders, request for information or assistance, always specify the type and the serial number of the machine to your Case dealer.

Fill in the following lines with the required information: Type, serial number, year of manufacture of the machine and the serial numbers of the hydraulic and mechanical components.

## Machine



CP98N006



CS00M518

- (1) Type.....
- (2) Serial number.....
- (3) Year of manufacture.....

## Engine

Make and type .....

Serial number .....

## Serial numbers of the components

Hydraulic pump.....

Swing reduction gear.....

Travel reduction gears.....

Travel control valve.....

Attachment control valve .....

Swing control valve.....

## INGREDIENTS

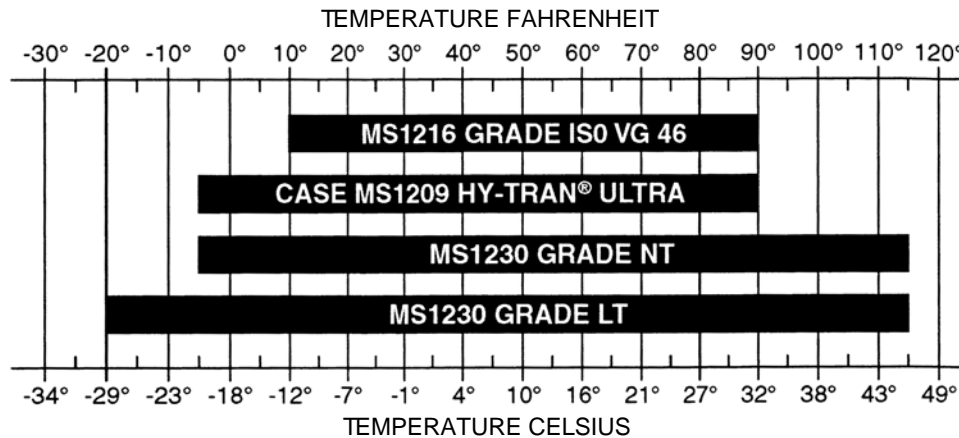
The ingredients must correspond to specific characteristics for every usage.



**WARNING:** You must respect the operating conditions for the different ingredients.

### Hydraulic fluid chart

**NOTE:** Use only hydraulic oils meeting Case specifications or equivalent AW (anti-wear) hydraulic oils.



CS02K507

**NOTE:** Case specification MS1209 Fluid is used in place of ISO VG 32 (-5° to + 65° F) and ISO VG 46 (+10° to + 90° F).

**NOTE:** Case specifications MS1230 Grade NT or Grade LT is used in place of ISO VG 32 (-5° to + 65°F), ISO VG 46 (+10° to + 90°F), ISO VG 100 (+30° to +115°F) and MS1210 TCH

### Transmission assembly oil

Extreme pressure oil used for transmission assemblies in housing.

Extreme pressure oil TYPE API GL5 GRADE 80W90 and ISO VG 150

### Greases

The type of grease to be used depends on the ambient temperature.

#### Hot and temperate climates

-4°F to + 140°F (-20°C to +60°C)

Extreme pressure EP NLGI grade 2 grease with molybdenum disulfide.

#### Cold climates

-40°F to +68°F (-40°C to +20°C)

Extreme pressure EP NLGI grade 0 grease.

## Engine Oil

THE CASE No. 1 engine oil is recommended for your engine. This oil ensures proper lubrication of your engine for all operating conditions.

If you are unable to procure the CASE No. 1 Multiperformance or Performance engine oil, use the corresponding oil from the API/CG/CF category.

**NOTE:** Do not put any Performance Additives or any other additives in the engine housing. The oil changing intervals are indicated in this manual based on tests carried out on CASE lubricants.

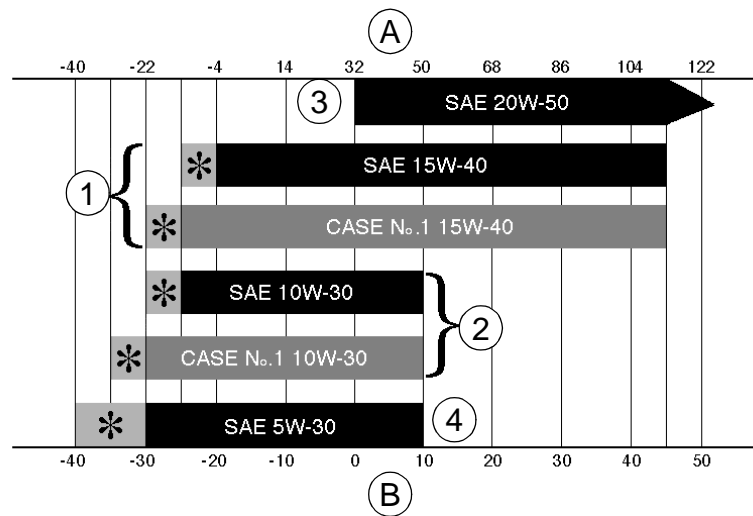


RD97F136



RD97F100

## Oil Viscosity / Oil Range



(A) FAHRENHEIT TEMPERATURE

(B) CELSIUS TEMPERATURE

(1) ALL-SEASONS

(\*) SHOWS THAT AN ENGINE OIL HEATER OR ENGINE COOLANT SOLUTION HEATER MUST BE USED.

(2) WINTER

(3) TROPICAL

(4) ARCTIC

CS98M561

## Low fuel

The fuel to be used must comply with the D975 norm of the American Society for Testing and Materials (ASTM).

Use type No.2 fuel, use of other fuels can cause a loss of engine power and excessive fuel consumption.

In cold weather, it is provisionally accepted that a mixture of No.1 and No.2 fuels be used. Contact your fuel supplier.

If the temperature drops below the freezing point of the fuel (point where paraffin appears), paraffin crystals in the fuel will cause loss of engine power or starting trouble.

**IMPORTANT:** *In cold weather, fill up the reservoir with fuel after each workday, in order to avoid the formation of condensation.*

## Storing fuel

Prolonged storage of fuel promotes the accumulation of foreign bodies or condensed moisture in the storage tank. Many engine failures are caused by the presence of water in fuel.

The storage tank must be placed outside and the fuel should be maintained at as low a temperature as possible. Drain the condensed moisture at regular intervals.

## Antifreeze/anticorrosive

Use the antifreeze in all seasons to protect the coolant system from corrosion and to avoid any risk of freezing.

In environments with a temperature greater than -33°F (-36°C), use a 50% mixture of antifreeze in an ethylene glycol base.

In environments with a temperature less than -33°F (-36°C), it is recommended that you use a 40% water and 60% antifreeze mixture.

## Environment

Before carrying out any maintenance operation on this machine and before throwing away the liquids or lubricants used, always think of the environment. Never throw oil or liquids on the ground and never put them in leaking containers.

Consult your local centre for ecological recycling for information on the appropriate method for disposing off these substances.

## Plastic and resin parts

When cleaning plastic parts, on the console, the instrument panel, the indicator and gauges etc., do not use petrol, paraffin, paint solvents, etc. Use only water, soap and a soft cloth.

The use of petrol, paraffin, paint solvents, etc. causes discoloration, cracks or deformation of these parts.

## SPECIFICATIONS

### Engine

Make ..... Isuzu  
 Model ..... 6SD1XQB

Type: Four stroke, water cooled with overhead valves, direct injection in-line cylinder (electronic control) with turbo-charger.

Number of cylinders ..... 6

Bore and stroke ..... 4.72 x 5.70 inches

Displacement ..... 600 cu in

#### Operating conditions

Idle ..... 900 rpm

Max speed ..... 1950 rpm

SAE net horse power ..... 315.7 HP

Max torque ..... 991 lb-ft at 1600 rpm

### Capacities

Engine oil capacity ..... 8.7 gallons

Engine cooling circuit ..... 12 gallons

Capacity of only the radiator ..... 5.5 gallons

Fuel reservoir ..... 161.4 gallons

Hydraulic fluid reservoir capacity ..... 58 gallons

Total hydraulic circuit capacity ..... 118.8 gallons

Capacity of only the oil-cooler ..... 4.35 gallons

Travel reduction gear housing capacity ..... 3.9 gallons

Swing drive housing capacity ..... 2.7 gallons

Idler pulley capacity ..... 15.8 cu in

Upper roller capacity ..... 14.9 to 15.2 cu in

Lower roller capacity ..... 17 cu in

**NOTE:** *These capacities are given only for information purposes. To check the fluid levels, always use the oil gauge, visual gauges or the filler cap.*

### Electrical system

Type of system ..... 24 volts earth negative

Alternator amperage ..... 50 amperes

#### Battery

Number of batteries required ..... 2

Voltage of each battery ..... 12 volts

Capacity ..... 140 Ah

Reserve ..... 160 min

Cold startability at -1.4°F ..... 800 A

Load for load control ..... 400 A

#### Starter

Voltage ..... 24 volts

Power ..... 5.5 kW

Voltage regulator ..... built-in, without adjustment

## Hydraulic system

### Main hydraulic pump

Variable flow dual pump, with axial pistons.

Maximum flow.....	2 x 95 gpm
Displacement.....	2 x 11.1 cu in

### Hydraulic pilot pump

Fixed flow pump

Max flow .....	8 gpm
Displacement.....	0.91 cu in

### Pressure setting

Pilot circuit relief .....	566 ± 14.5 psi
Main circuit relief (standard) .....	4554 ± 43 psi
Main circuit relief (power-up) .....	4975 ± 72 psi
Secondary relief (boom raising, dipper and bucket) .....	5265 ± 72 psi
Secondary reliefs (boom lowering) .....	3553 ± 72 psi
Secondary reliefs (swing) .....	4264 ± 72 psi
Secondary relief (travel) .....	5511 ± 72 psi
Safety valve (boom and dipper).....	5265 ± 72 psi

## Cylinder

### Boom cylinder

Cylinder bore .....	6.7 in
Rod diameter .....	4.5 in
Stroke .....	61 in

### Dipper cylinder

Cylinder bore .....	7.9 in
Rod diameter .....	5.5 in
Stroke .....	71.6 in

### Bucket cylinder

Cylinder bore .....	6.5 in
Rod diameter .....	4.5 in
Stroke .....	50.5 in

### Cylinder leakage - attachment lowering (without load)

Boom cylinders (rods retraction).....	0.11 in/5 min
Dipper cylinder (rod extension).....	0.11 in/5 min
Dipper cylinder (rod extension).....	0.27 in/5 min
Total (at the end of the attachment).....	7.9 in/10 min

### Cylinder speed (in S mode)

Boom raised (bucket open and on the ground) .....	4.9 seconds
Boom lowering (bucket open).....	3.6 seconds
Dipper extend .....	3.8 seconds
Dipper retract.....	4.7 seconds
Bucket open.....	3.4 seconds
Bucket close .....	5.6 seconds

## Control valve

Five-element control valve for dipper, boom acceleration, swing, option and right travel.

Five-element control valve for dipper acceleration, bucket, boom, left travel and straight travel.

Load holding relief valve for boom and dipper.

## Swing

Fixed flow engine with axial pistons.

Automatic disk brakes.

Upperstructure frame swing speed.....	9.0 rpm
Displacement.....	15.2 cu in
Work flow.....	95 gpm
Reduction ratio .....	27.143
Brake torque.....	≥ 949 lb-ft
Minimum brake release pressure .....	421 psi
Permissible motor leak .....	4.7 gpm

## Travel

Two-speed motor with axial pistons.

Automatic disk brakes.

Low speed .....	1.9 mph
High speed .....	3.3 mph
Gradeability .....	70% (35°)
Tractive effort.....	80031 lbf
Displacement.....	17.7/10.3 cu in
Work flow.....	95.2 gpm
Reduction ratio .....	60.652
Braking torque (reduction gear excluded) .....	≥ 665 lb-ft
Number of sprocket turns (10 turns)	
Mode "S", low speed .....	30.5 s
Mode "S", high speed.....	18.2 s
Permissible deviation in travel over a distance of 65 ft 7 in	
Mode "H", full speed.....	39.36 in
Permissible motor leak .....	3.7 gpm

## Undercarriage

One-piece frame with fabricated elements.

Lubricated rollers and idler wheels.

Grease track tension.

Ground pressure

with 23.6 in track pads .....	11.7 psi
with 29.5 in track pads .....	9.5 psi
with 35.4 in track pads .....	8.1 psi

Track tension .....	14.1 to 14.9 in
---------------------	-----------------

## Attachment

Break-out force .....	60698 lbf
-----------------------	-----------

Break-out force

8 ft 3 in dipper .....	63171 lbf
11 ft 2 in dipper.....	51481 lbf

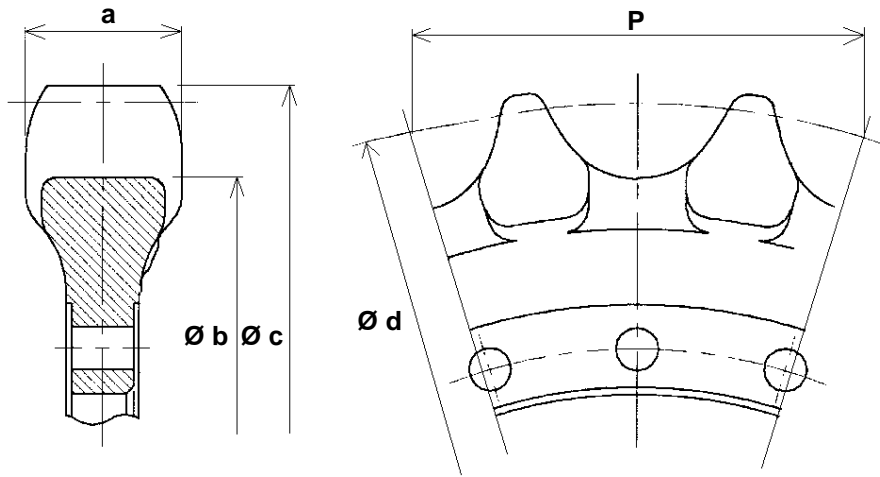
## Weight of components

Engine .....	1543 lbs
Hydraulic pump.....	487 lbs
Attachment control valve .....	939 lbs
Swing motor and reduction gear assembly .....	1177 lbs
Travel motor and reduction gear assembly .....	1323 lbs
Counterweight .....	20238 lbs
Cab .....	560 lbs
Turntable .....	1565 lbs
Upperstructure assembly.....	40256 lbs
Hydraulic swivel.....	119 lbs
Frame assembly .....	39132 lbs
Machine without attachment.....	80932 lbs
Attachment .....	22553 lbs
Boom assembly.....	10604 lbs
Dipper assembly.....	6702 lbs
Radiator and oil-cooler assembly .....	375 lbs
Fuel reservoir.....	533 lbs
Hydraulic reservoir.....	485 lbs
Idler wheel .....	518 lbs
Upper roller.....	97 lbs
Lower roller.....	101 lbs
Tension damper.....	791 lbs
23.6 in track .....	5710 lbs
29.5 in track .....	6470 lbs
31.5 in track .....	6724 lbs
35.4 in track .....	7242 lbs

# DIMENSIONS AND WEAR LIMIT OF THE TRACK ASSEMBLY

## Sprocket

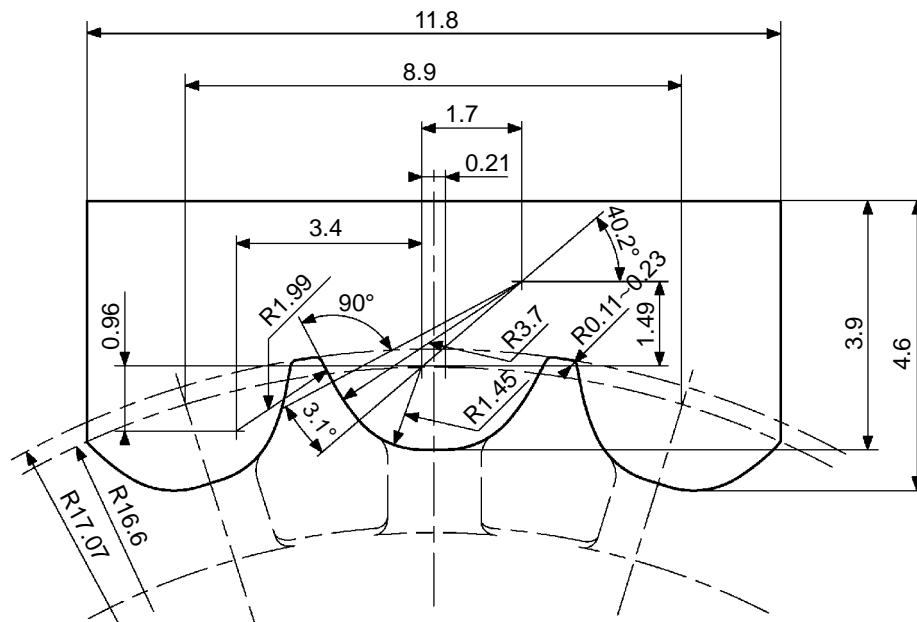
### Dimensions



CS01B512

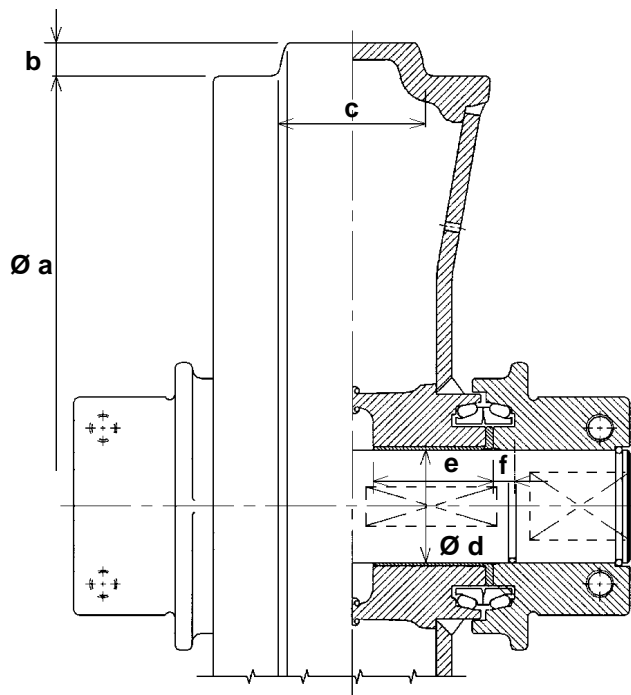
Mark		Dimension (in)
a	Standard	3.54
	Limit	3.07
Ø b	Standard	30.4
	Limit	29.9
Ø c	Standard	34.1
	Limit	33.6
Ø d	Standard	33.3
	Limit	---
P	Standard	9.01
	Limit	---

### Gauge



# Idler wheel

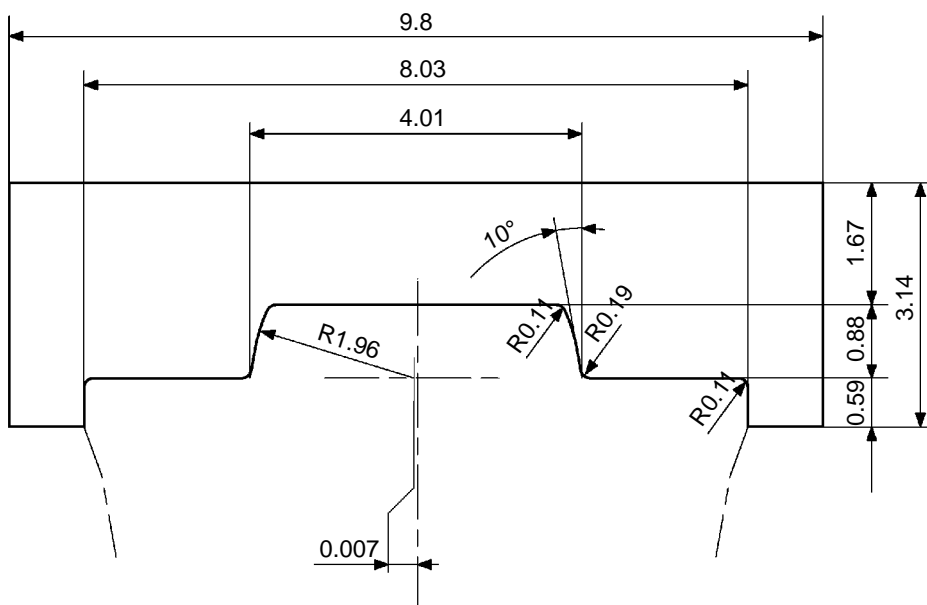
## Dimensions



Mark		Dimension (in)
$\varnothing a$	Standard	26.6
	Limit	26.1
$b$	Standard	0.88
	Limit	---
$c$	Standard	4.01
	Limit	3.62
$\varnothing d$ (shaft)	Standard	3.74
	Limit	3.70
$\varnothing d$ (bushing)	Standard	3.74
	Limit	3.77
$e$	Standard	3.93
	Limit	3.89
$f$	Standard	0.59
	Limit	---

CS01B514

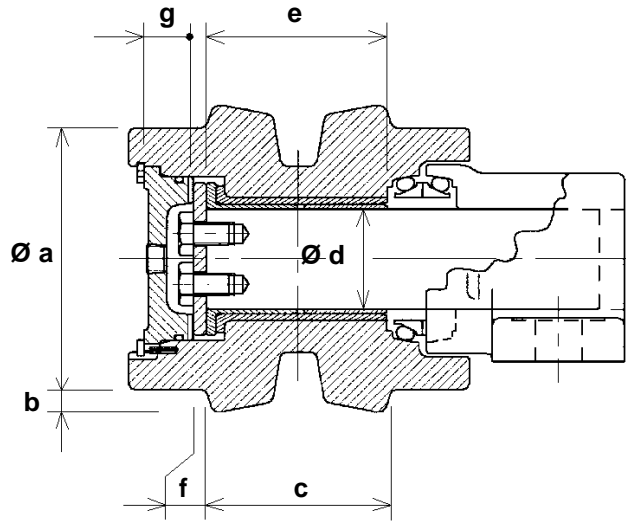
## Gauge



CI01N502

# Upper roller

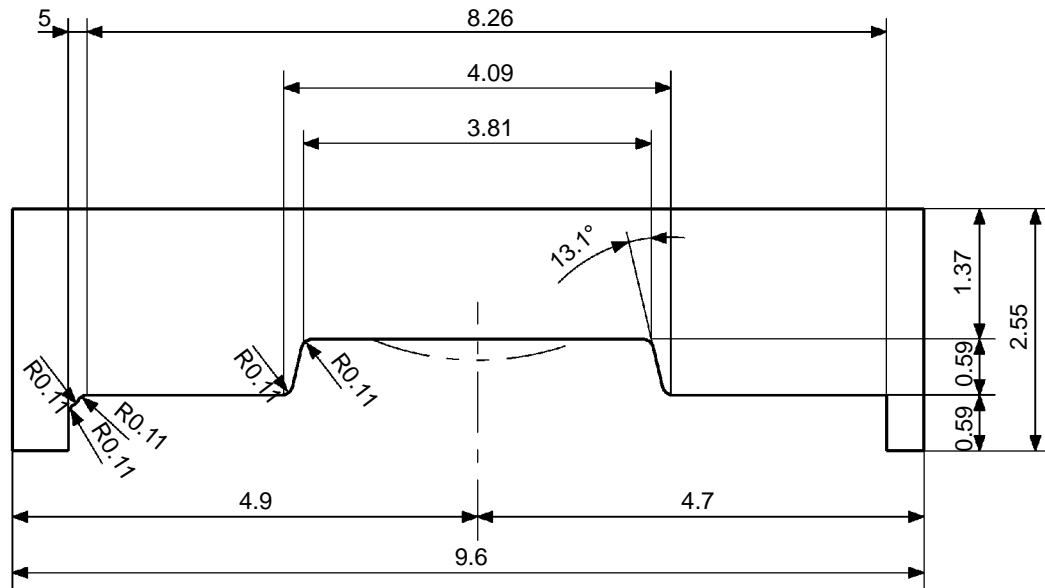
## Dimensions



CS01B516

Mark		Dimension (in)
Ø a	Standard	5.9
	Limit	5.5
b	Standard	0.59
	Limit	---
c	Standard	4.09
	Limit	---
Ø d (shaft)	Standard	2.55
	Limit	2.51
Ø d (bushing)	Standard	2.55
	Limit	2.59
e	Standard	2.7
	Limit	2.67
f	Standard	0.35
	Limit	0.33
g	Standard	1.18
	Limit	---

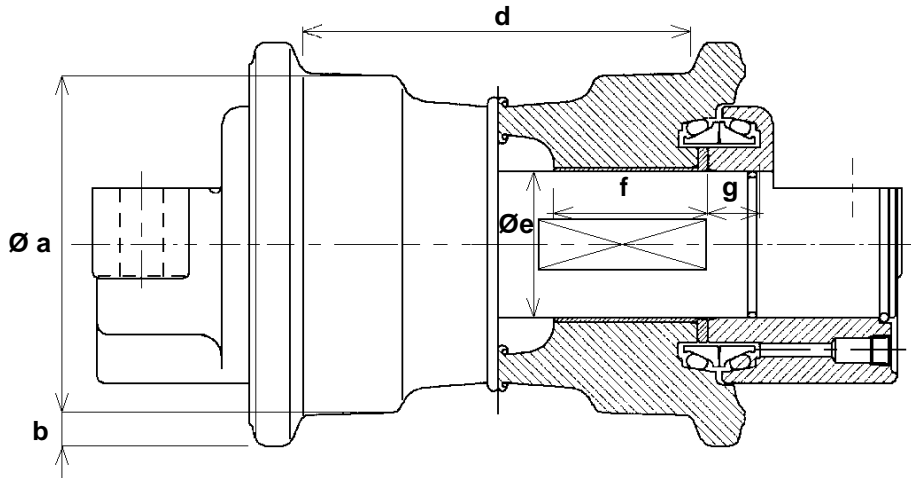
## Gauge



CI01N503

# Lower roller

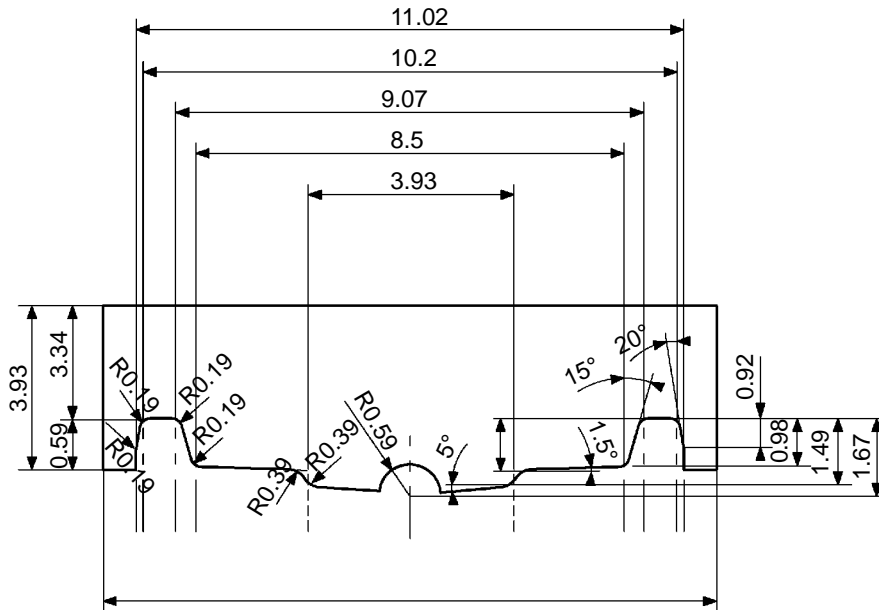
## Dimensions



CS01B518

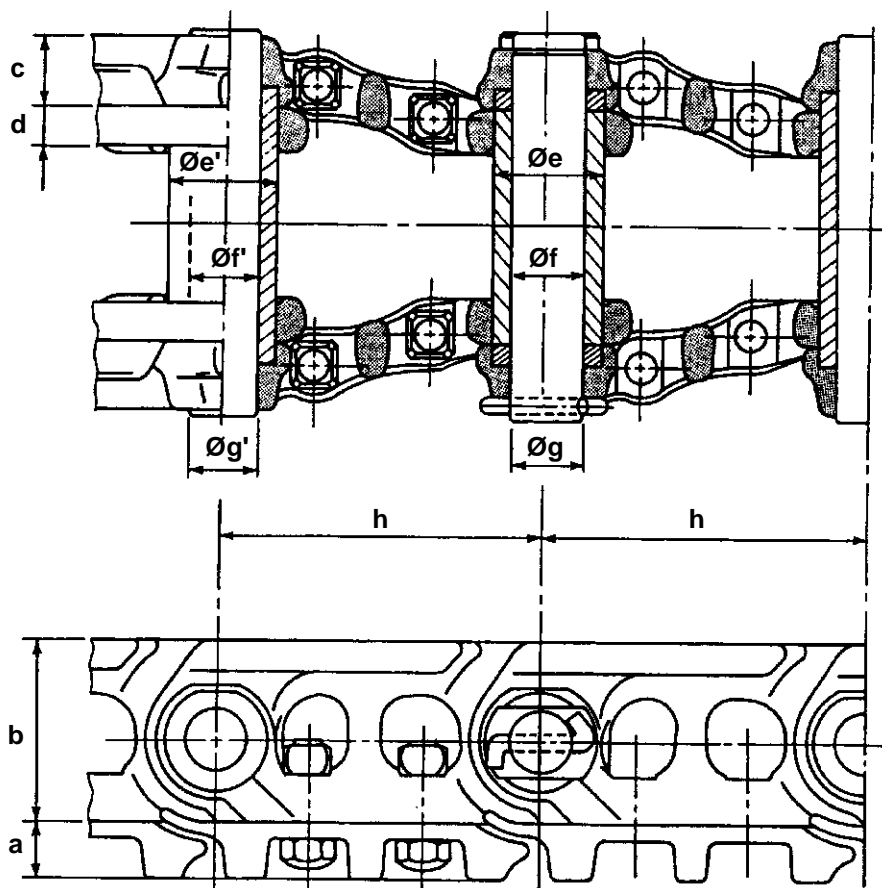
Mark		Dimension (in)	Mark		Dimension (in)
Ø a	Standard	7.87	Ø e (ring)	Standard	3.34
	Limit	7.40		Limit	3.38
b	Standard	0.98	f	Standard	3.66
	Limit	0.78		Limit	3.62
d	Standard	8.77	g	Standard	0.96
	Limit	9.17		Limit	0.94
Ø e (shaft)	Standard	3.34			
	Limit	3.30			

## Gauge



CI01N504

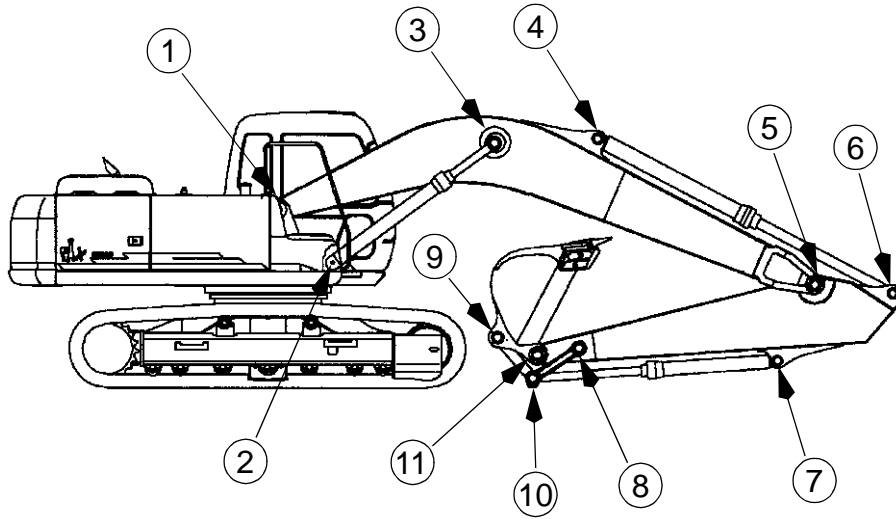
## Track



CS01B520

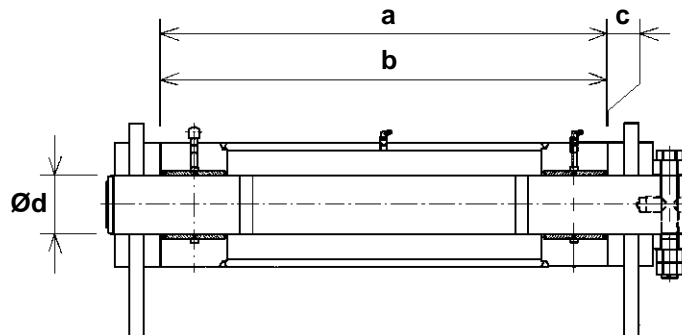
Mark		Dimension (in)	Mark		Dimension (in)
<b>a</b>	Standard	2.04	<b>Ø e (ring)</b>	Standard	2.88
	Limit	1.25		Limit	2.68
<b>b</b>	Standard	5.07	<b>Ø f (ring)</b>	Standard	1.93
	Limit	4.76		Limit	2.03
<b>c</b>	Standard	1.85	<b>Ø g (shaft)</b>	Standard	1.90
	Limit	1.79		Limit	1.77
<b>d</b>	Standard	1.10	<b>h</b>	Standard	8.99
	Limit	1.04		Limit	---
			<b>Ø e' (bushing)</b>	Standard	2.88
				Limit	2.68
			<b>Ø f' (bushing)</b>	Standard	1.94
				Limit	2.06
			<b>Ø g' (shaft)</b>	Standard	1.92
				Limit	1.76

# DIMENSIONS AND WEAR LIMITS OF ATTACHMENT LINKAGES



CS01B521

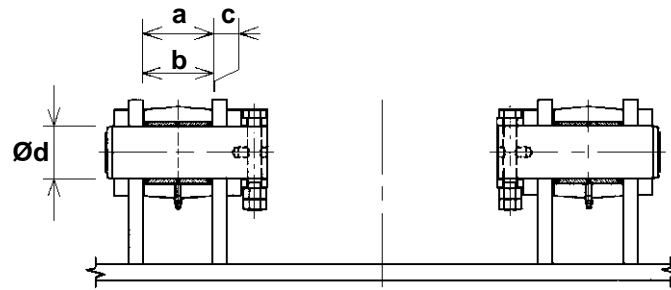
## 1. Boom foot/Frame



CS01B522

Mark		Dimension (in)
<b>a</b>	Standard	34.4
	Limit	34.7
<b>b</b>	Standard	34.3
	Limit	34.2
<b>c (a - b)</b>	Standard	0.05 to 0.13
	Limit	Shims
<b>Ø d (shaft)</b>	Standard	4.72
	Limit	4.68
<b>Ø d (bushing)</b>	Standard	4.72
	Limit	4.78

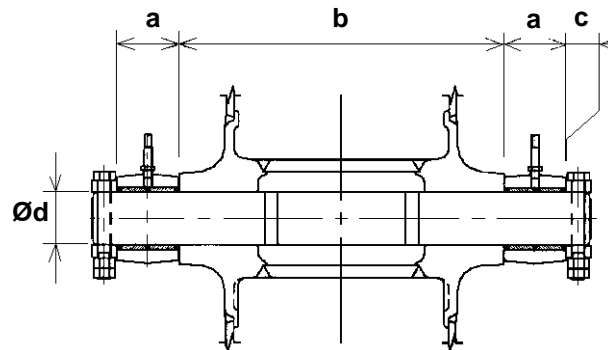
## 2. Boom cylinder foot/Frame



CS01B523

Mark		Dimension (in)
<b>a</b>	Standard	4.96
	Limit	5.19
<b>b</b>	Standard	4.92
	Limit	4.80
<b>c (play)</b>	Standard	0.06 to 0.13
	Limit	Shims
<b>Ø d (shaft)</b>	Standard	4.72
	Limit	4.68
<b>Ø d (bushing)</b>	Standard	4.72
	Limit	4.78

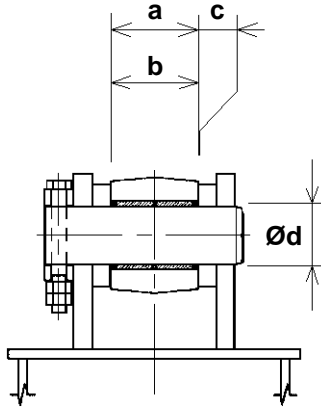
## 3. Boom cylinder head/Boom



CS01B524

Mark		Dimension (in)
<b>a</b>	Standard	5.51
	Limit	5.39
<b>b</b>	Standard	26.7
	Limit	26.5
<b>c (play)</b>	Standard	0.06 to 0.11
	Limit	Shims
<b>Ø d (shaft)</b>	Standard	4.72
	Limit	4.68
<b>Ø d (bushing)</b>	Standard	4.72
	Limit	4.78

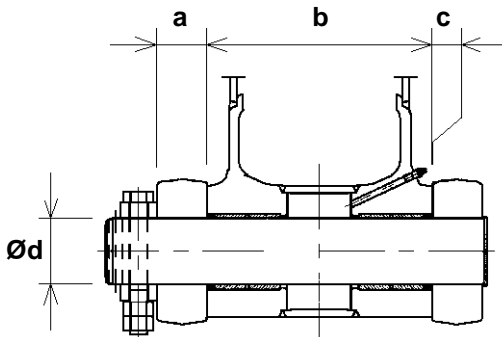
### 4. Dipper cylinder foot/Boom



CS01B525

Mark		Dimension (in)
<b>a</b>	Standard	6.14
	Limit	6.37
<b>b</b>	Standard	6.10
	Limit	6.02
<b>c (a - b)</b>	Standard	0.06 to 0.13
	Limit	Shims
<b>Ø d (shaft)</b>	Standard	4.72
	Limit	4.68
<b>Ø d (bushing)</b>	Standard	4.72
	Limit	4.78

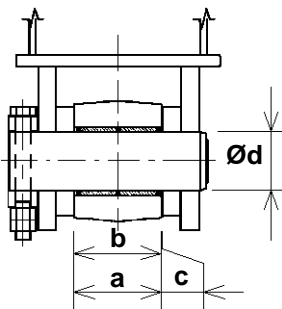
### 5. Boom/Dipper



CS01B526

Mark		Dimension (in)
<b>a</b>	Standard	3.85
	Limit	3.77
<b>b (boom)</b>	Standard	17.20
	Limit	17.32
<b>b (dipper)</b>	Standard	17.18
	Limit	17.06
<b>c (play)</b>	Standard	0.039 to 0.078
	Limit	Shims
<b>Ø d (shaft)</b>	Standard	4.72
	Limit	4.68
<b>Ø d (dipper)</b>	Standard	4.72
	Limit	4.78
<b>Ø d (boom)</b>	Standard	4.72
	Limit	4.78

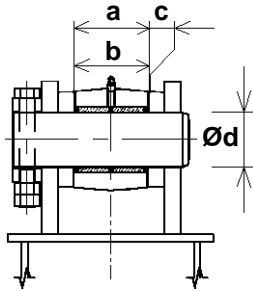
### 6. Dipper cylinder head/Dipper



CS01B527

Mark		Dimension (in)
<b>a</b>	Standard	6.14
	Limit	6.33
<b>b</b>	Standard	6.10
	Limit	6.02
<b>c (a - b)</b>	Standard	0.039 to 0.11
	Limit	Shims
<b>Ø d (shaft)</b>	Standard	4.72
	Limit	4.68
<b>Ø d (bushing)</b>	Standard	4.72
	Limit	4.78

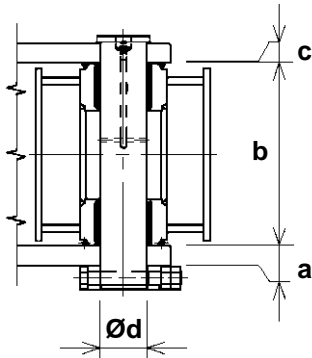
## 7. Bucket cylinder foot/Dipper



CS01B528

Mark		Dimension (in)
<b>a</b>	Standard	5.55
	Limit	5.74
<b>b</b>	Standard	5.51
	Limit	5.43
<b>c (a - b)</b>	Standard	0.039 to 0.11
	Limit	Shims
<b>Ø d (shaft)</b>	Standard	4.33
	Limit	4.29
<b>Ø d (bushing)</b>	Standard	4.33
	Limit	4.38

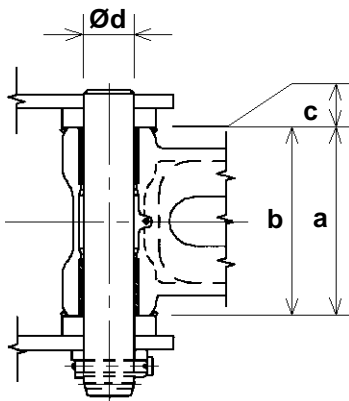
## 8. Connecting rod/Dipper



CS01B529

Mark		Dimension (in)
<b>a</b>	Standard	1.96
	Limit	1.85
<b>b</b>	Standard	17.40
	Limit	17.24
<b>c (play)</b>	Standard	0.06 to 0.08
	Limit	Shims
<b>Ø d (shaft)</b>	Standard	3.74
	Limit	3.70
<b>Ø d (bushing)</b>	Standard	3.74
	Limit	3.79

## 9. Compensator/Bucket



CS01B530

Mark		Dimension (in)
<b>a</b>	Standard	18.9
	Limit	19.9
<b>b</b>	Standard	18.8
	Limit	18.7
<b>c (play)</b>	Standard	0.06 to 0.15
	Limit	Shims
<b>Ø d (shaft)</b>	Standard	3.93
	Limit	3.89
<b>Ø d (bushing)</b>	Standard	3.93
	Limit	3.99