



作成承認印	配布許可印
	

**F90X** FAA28052  
 FAA28252  
 FAA28452

**N90S** FAA28152

REPAIR MANUAL  
 修 理 指 針

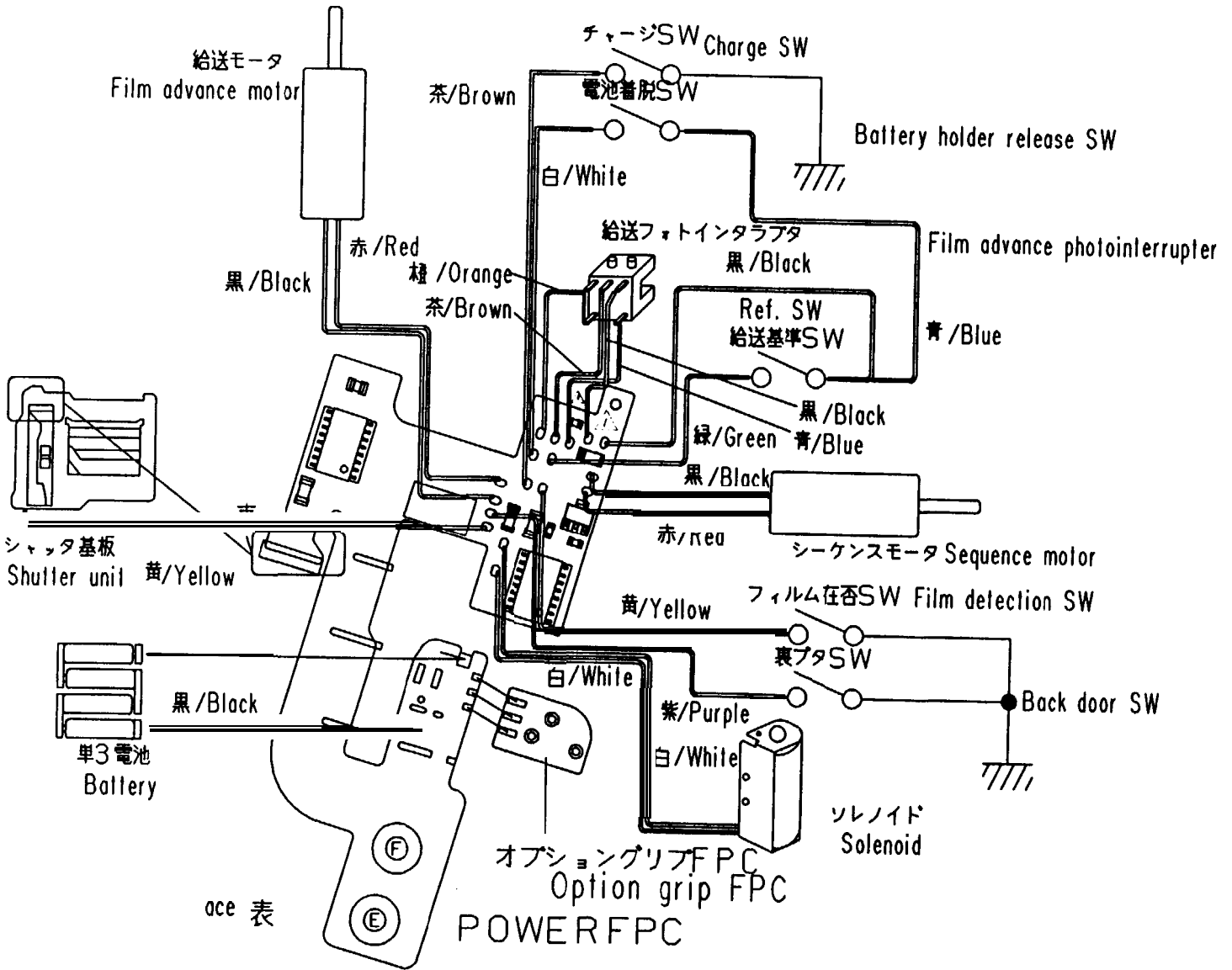
**Nikon** | NIKON CORPORATION  
 Tokyo, Japan

© Copyright 1994  
 ALL RIGHTS RESERVED  
 無断転載を禁ず!!

Printed in Japan September 1994

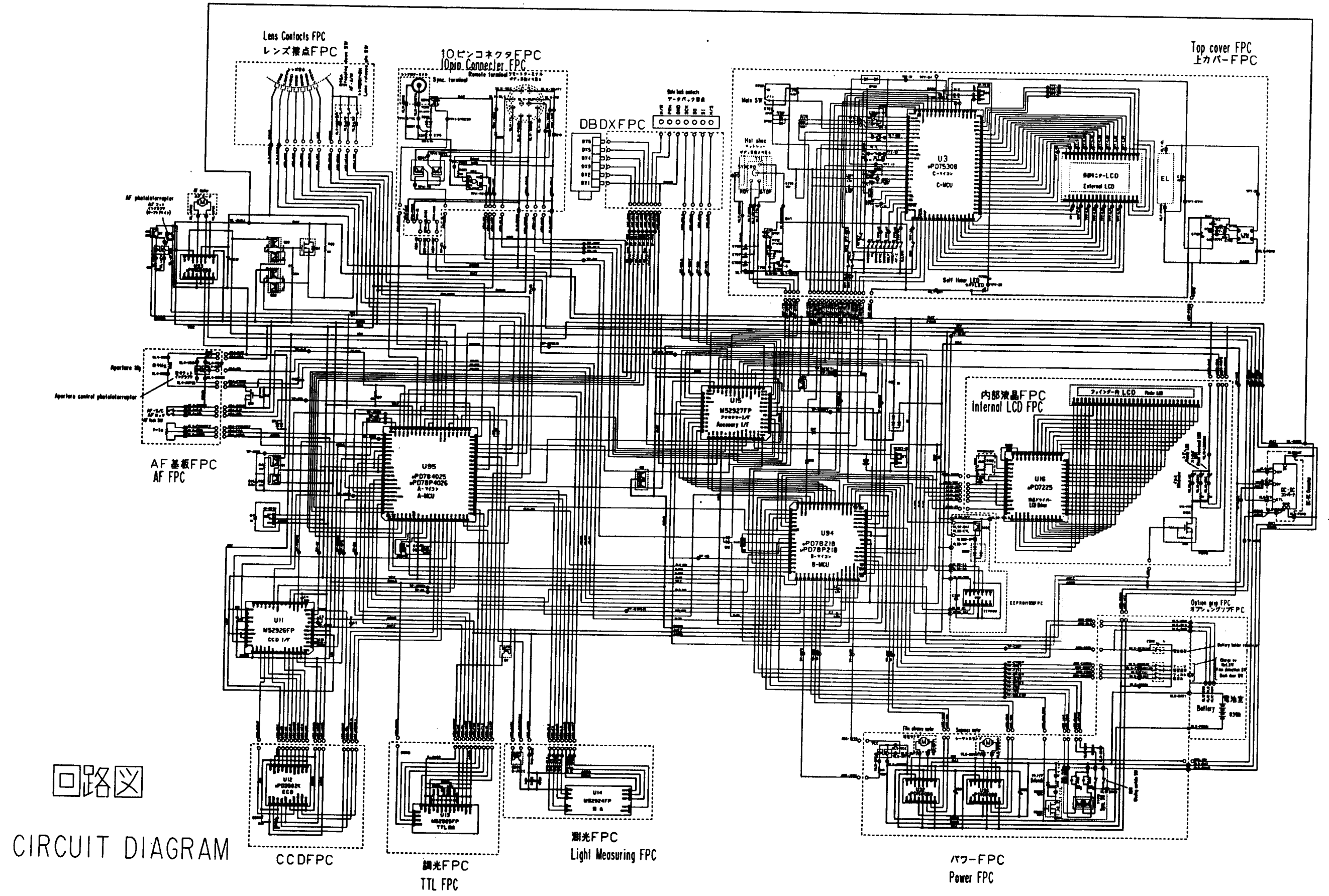
## E l e c t r i c C i r c u i t

Wiring Diagram	-----	E 1
Circuit Diagram	-----	E 2
Main FPC PART /k CHECKLANDS	-----	E 3
TOP COVER FPC	-----	E 5
#1010 FPC	-----	E 7
REMOTE TERMINAL FPC	-----	E 8
POWER FPC	-----	E 10
LENS CONTACT FPC	-----	E 11
A-MCU PIN TABLE	-----	E 12
B-MCU PIN TABLE	-----	E 13





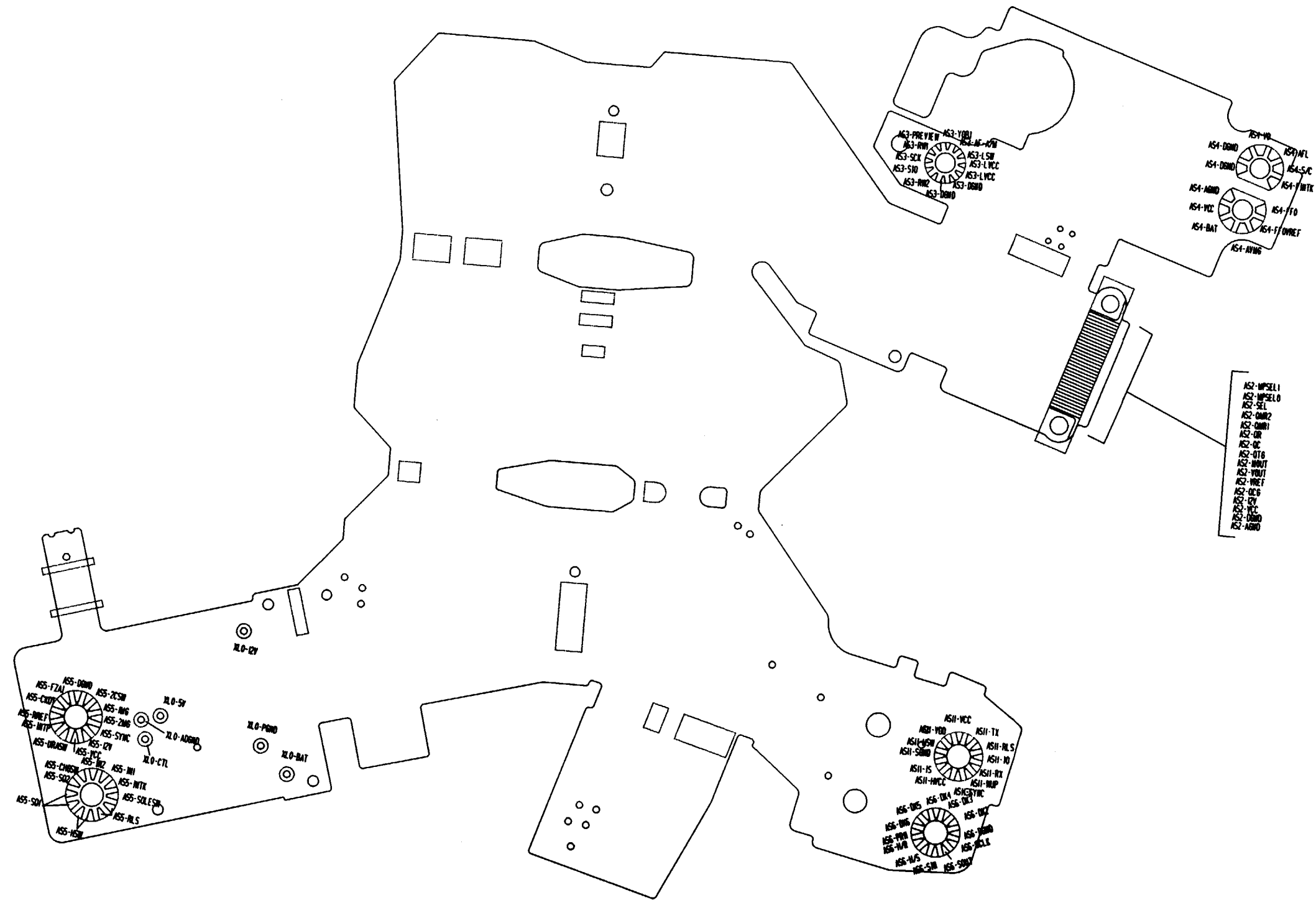




CIRCUIT DIAGRAM



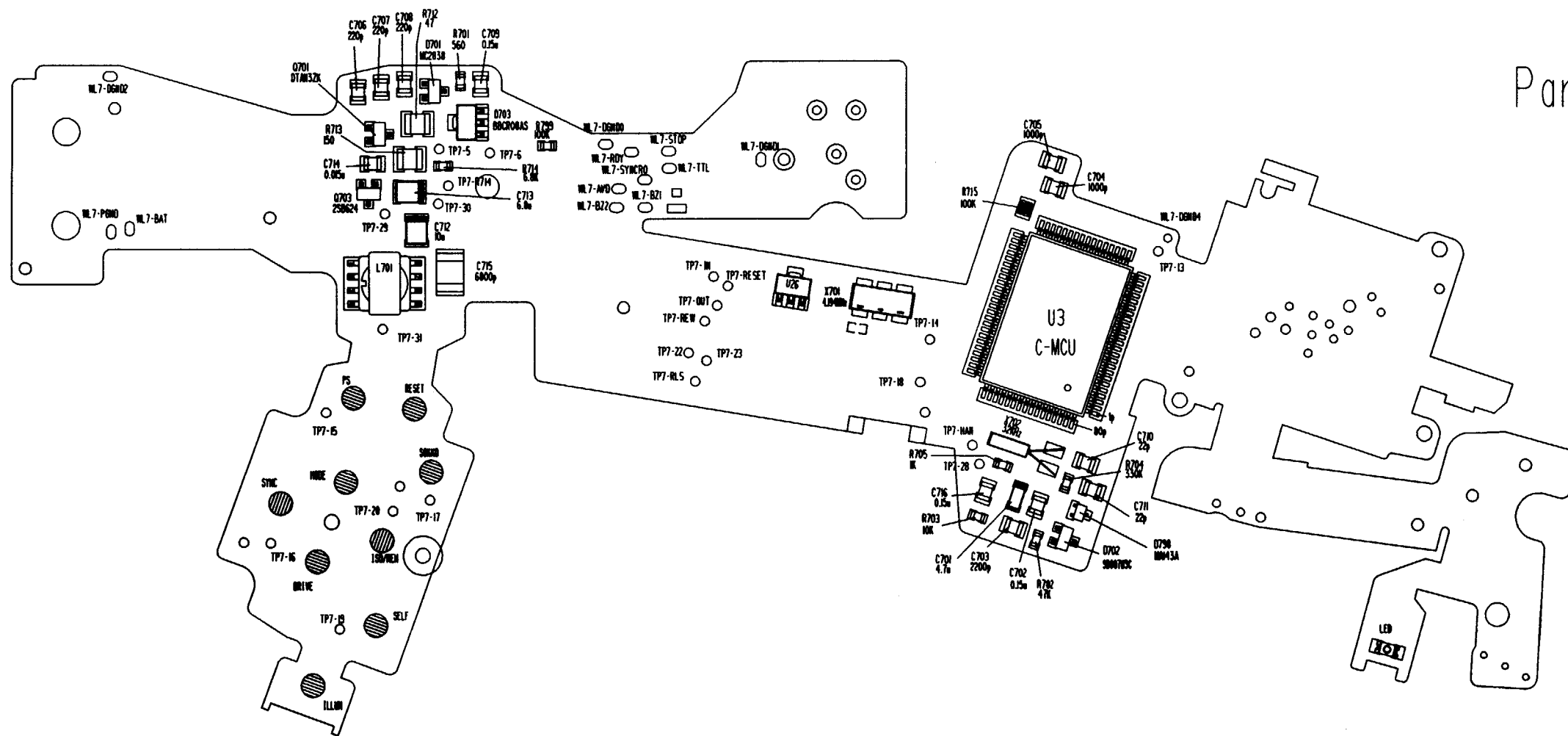
Main FPC  
Check Lands



上カバーFPC

Top Cover FPC

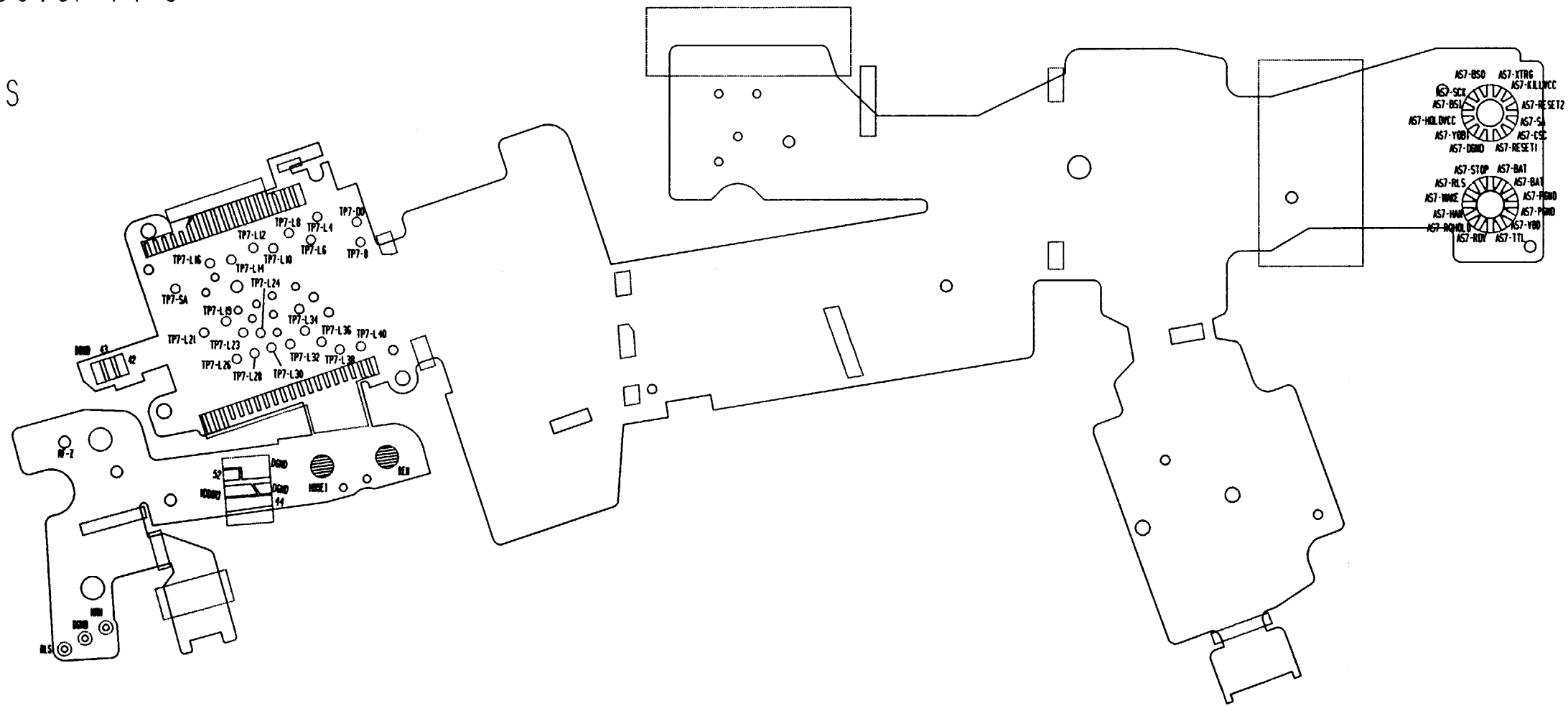
Parts & Check Lands



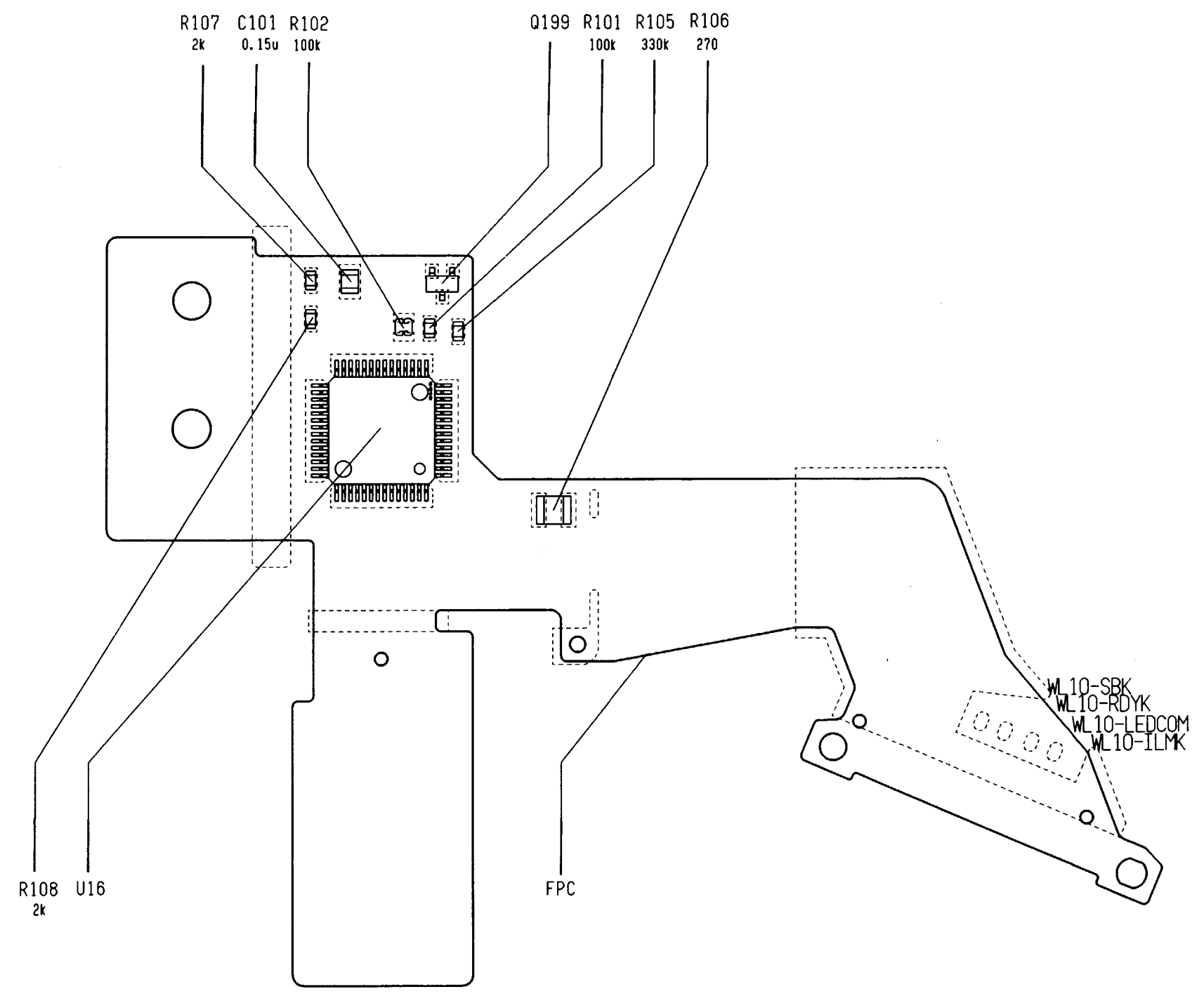
上カバー-FPC

Top Cover FPC

Check Lands



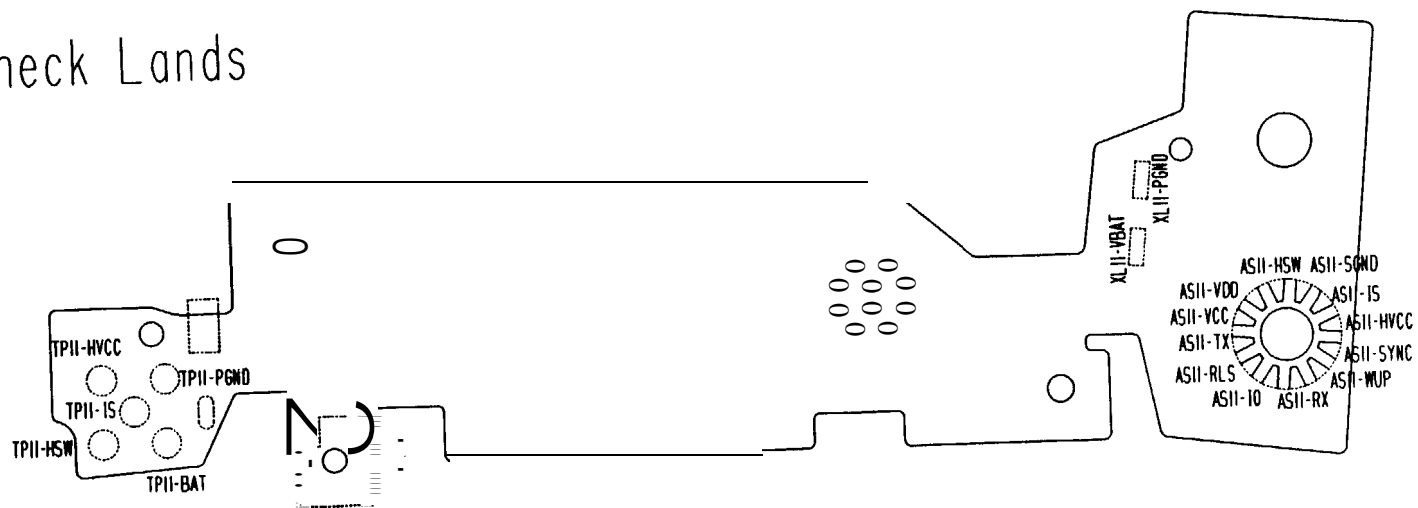
#1010 FPC  
(内LCDフレキ)



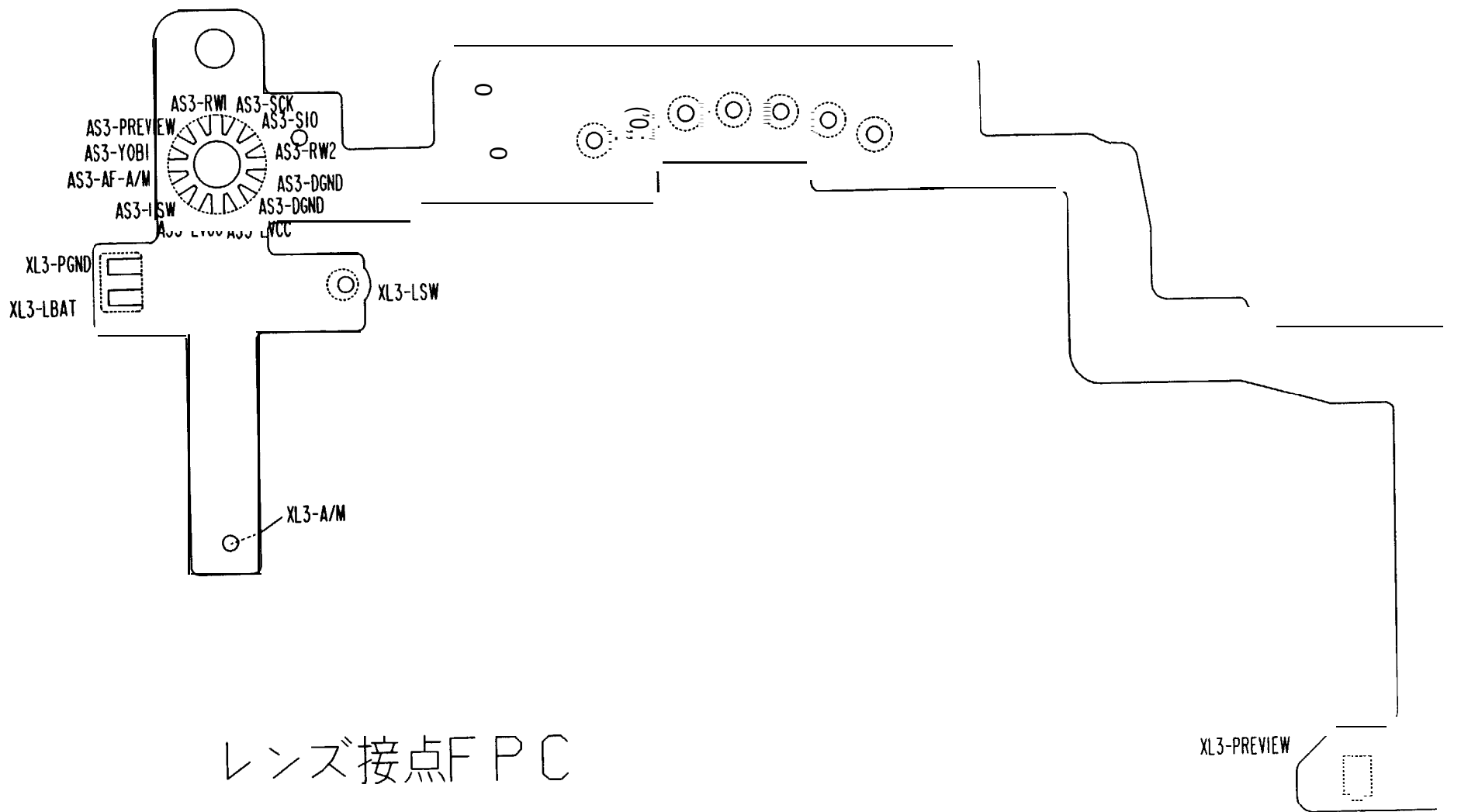
リモートターミナルFPC

Remote Terminal FPC

Check Lands







-E 1 1・P90X-

レンズ接点FPC

Lens Contacts FPC

## F90X (N90S) EEPROM DATA

95-02-01

.DDRES	CONTENTS	DATA FOR A-MCU				NOTE
		MP1	MP2	MP3		
0	AD ADJUSTMENT DATA	--	--	--		
1						
<b>253</b>	AF ADJUSTMENT OATA	--	--	--		
<b>254</b>	AE ADJUSTMENT DATA CH1	' -	' -	' -		
<b>255</b>	READJUSTMENT DATA CH2	" -	" -	" -		
<b>256</b>	READJUSTMENT DATA CH3	' -	' -	' -		
<b>257</b>	AE ADJUSTMENT DATA CH4	' -	' -	' -		
<b>258</b>	AE ADJUSTMENT DATA CH5	' -	' -	' -		
<b>259</b>	AE ADJUSTMENT OATA CH6	' -	' -	' -		
<b>260</b>	AE ADJUSTMENT DATA CH7	' -	' -	' -		
<b>261</b>	AE ADJUSTMENT DATA CH8	' -	' -	' -		
<b>262</b>	AE ADJUSTMENT OATA	--	--	--		
<b>263</b>	AEOJUSTMENT DATA	--	--	--		
<b>264</b>	TTL ADJUATMENT DATA CH1	' -	' -	" -		TTL-PRE-LEVEL
<b>265</b>	TTL ADJUATMENT DATA CH2	' -	' -	' -		TTL-PRE-LEVEL
<b>266</b>	TTL ADJUATMENT DATA CH3	' -	' -	' -		TTL-PRE-LEVEL
<b>267</b>	TTL ADJUATMENT DATA CH4	' -	' -	' -		TTL-PRE-LEVEL
<b>268</b>	TTL ADJUATMENT DATA CH5	' -	' -	' -		TTL-PRE-LEVEL
<b>269</b>	TTL ADJUSTMENT OATA	--	--	---		PRE-GAMMA
<b>270</b>	TTL ADJUATMENT OATA CH1	' -	' -	' -		TTL-LEVEL
<b>271</b>	TTL ADJUATMENT DATA CH2	' -	' -	' -		TTL-LEVEL
<b>272</b>	TTLADJUATMENT DATA CH3	' -	' -	' -		TTL-LEVEL
<b>273</b>	TTL ADJUATMENT DATA CH4	' -	' -	' -		TTL-LEVEL
<b>274</b>	TTL ADJUATMENT DATA CH5	' -	' -	' -		TTL-LEVEL
<b>275</b>	TTL ADJUSTMENT DATA	--	---	--		TTL-LEVEL
<b>276</b>	CAMERA CONTROL OATA	10	10	10		
<b>277</b>	CAMERA CONTROL DATA	115	115	115		
<b>278</b>	BC ADJUSTMENT DATA BC1	' -	' -	' -		
<b>279</b>	BC ADJUSTMENT DATA BC2	' -	' -	' -		

ADDRESS	CONTENTS	DATA FOR A-MCU			NOTE
		MP1	MP2	MP3	
280	CAMERA ADJUSTMENT DATA				
281	CAMERA CONTROL DATA	0	0	0	↑
282	CAMERA CONTROL DATA	0	0	0	... ..
283	CAMERA CONTROL DATA	255	255	255	
284	AF ADJUSTMENT DATA				↑
1	1	1	1	1	
307	AF ADJUSTMENT DATA				↑
308	CAMERA CONTROL DATA	40	40	40	
309	AF ADJUSTMENT DATA				“ ”
310	AF ADJUSTMENT DATA				
311	CAMERA CONTROL DATA	82	82	82	
312	CAMERA CONTROL DATA	16	16	16	↑
313	CAMERA CONTROL DATA	110	110	110	
314	CAMERA CONTROL DATA	0	0	0	
315	CAMERA CONTROL DATA	15	15	15	
316	CAMERA CONTROL DATA	0	0	0	
317	CAMERA CONTROL DATA	0	0	0	
318	CAMERA CONTROL DATA	220	220	220	
319	CAMERA CONTROL DATA	110	110	110	
320	CAMERA CONTROL DATA	28	28	28	
321	CAME] (A CONTROL 1) AIA	6	6	6	
322	CAMERA CONTROL DATA	245	245	245	
323	CAMERA CONTROL DATA	16	16	16	
324	CAMERA CONTROL DATA	255	255	255	
325	CAMERA CONTROL DATA	0	0	0	
326	CAMERA CONTROL DATA	0	0	0	
327	CAMERA CONTROL DATA	0	0	0	
328	FOR PRODUCTION STAGE				
1	1	1	1	1	
335	FOR PRODUCTION STAGE				

ADDRESS	CONTENTS	DATA FOR B-MCU				
336	CAMERA CONTROL DATA	0				
337	CAMERA CONTROL DATA	10				
338	CAMERA CONTROL DATA	138				
339	CAMERA CONTROL DATA	I 1341				
340	CAMERA CONTROL DATA	255				
341	CAMERA CONTROL DATA	255				
342	CAMERA CONTROL DATA	30				
343	CAMERA CONTROL DATA	01				
344	APERTURE CONTROL DATA	105 I				
<b>345</b>	APERTURE CONTROL DATA	130				
346	APERTURE CONTROL DATA	150				
347	M 1/8000 ADJUSTMENT DATA	--				
348	CAMERA CONTROL DATA	1				
349	CAMERA CONTROL DATA	16				
350	CAMERA CONTROL DATA	14				
351	CAMERA CONTROL DATA	8				
352	CAMERA CONTROL DATA	1				
<b>353</b>	CAMERA CONTROL DATA	50				
354	CAMERA CONTROL DATA	47				
355	CAMERA CONTROL DATA	3				
356	CAMERA CONTROL DATA	7				
357	CAMERA CONTROL DATA	50				
<b>358</b>	CAMERA CONTROL DATA	50				
359	<b>CAMERA CONTROL DATA</b>	4				
<b>360</b>	<b>CAMERA CONTROL DATA</b>	20				
361	F] LM LEADER CONTROL DATA REWIND FILM INTO PATRONE  • LEAVE FILM LEADER FROM PATRONE -----	-- 200  ----- 6				
<b>362</b>	<b>CAMERA CONTROL DATA</b>	20				
<b>363</b>	<b>CAMERA CONTROL DATA</b>	255				

ADDRESS	CONTENTS	DATA FOR B-MCU				NOTE
		(M)I				
364	CAMERA CONTROL DATA	10				
365	CAMERA CONTROL DATA	75				
366	CAMERA CONTROL DATA	112				
367	CAMERA CONTROL DATA	124				
368	CAMERA CONTROL DATA	208				
369	CAMERA CONTROL DATA	1				
370	CAMERA CONTROL DATA	0				
371	CAMERA CONTROL DATA	32				
372	CAMERA CONTROL DATA	162				
373	CAMERA CONTROL DATA	30				
374	UN-USED	0				
381	UN-USED	0				
382	CAMERA CONTROL DATA					
383	CHECK-SUM--DATA	--				
387	UN-USED	0				
388	ERROR CODE INDICATION CONTROL	---				
389	ERROR CODE INDICATION CONTROL	---				
390	CAMERA CONTROL DATA	57				
391	CAMERA CONTROL DATA	---				
395	CAMERA CONTROL DATA	1				
396	CAMERA CONTROL DATA	1				
397	UN-USED	---				
398	CAMERA CONTROL DATA	---				
404	CAMERA CONTROL DATA	---				
405	CAMERA CONTROL DATA	57				

,DDRES	CONTENTS	DATA FOR B-MCU				NOTE
		MP1				
406	CAMERA CONTROL DATA	---				
410	CAMERA CONTROL DATA	---				
411	CAMERA CONTROL DATA	1				
412	CAMERA CONTROL DATA	31				
413	CAMERA CONTROL DATA	15				
414	CAMERA CONTROL DATA	8				
415	CAMERA CONTROL DATA	4				
416	CAMERA CONTROL DATA	144				
417	CAMERA CONTROL DATA	---				
426	CAMERA CONTROL DATA	---				
427	CAMERA CONTROL DATA	48				
428	CAMERA CONTROL DATA	---				
429	CAMERA CONTROL DATA	---				
430	CAMERA CONTROL DATA	1				
431	CAMERA CONTROL DATA	---				
433	CAMERA CONTROL DATA	---				
434	CAMERA CONTROL DATA	208				
435	CAMERA CONTROL DATA	1				
436	CAMERA CONTROL DATA	208				
437	CAMERA CONTROL DATA	1				
438	CAMERA CONTROL DATA	208				
439	CAMERA CONTROL DATA	1				

ADDRESS	CONTENTS	DATA FOR B-MCU					NOTE
		MP1					
440	FOR PRODUCTION STAGE	---					
463	FOR PRODUCTION STAGE	--					
464	PHOTO DATA	--					
511	PHOTO DATA	---					

- ・ 0～335番地まではA-MCU用の固定値及び初期値です。
- ・ 336～511番地までは。B-MCU用の固定値及び初期値です。
- ・ --は調整後及びカメラ設定状態により変動する値です。

ADDRESS FROM 0 THROUGH 335: FIXED VALUE AND INITIAL VALUE FOR A-MCU.  
 ADDRESS FROM 336 THROUGH 511: FIXED VALUE AND INITIAL VALUE FOR B-MCU.  
 -- IS THE VALUE WHICH IS CHANGED AFTER ADJUSTMENT AND IS CHANGED ACCORDING TO THE CAMERA MODE.

## [ 1 1 1 4 % T O O L

14% %\$'-% TOOL No.	名 称 NAME	区 分 CLASS
J 1 8 2 4 1 A	点検、調整用フロッピーディスク NEC PC-9801J% 507 INSPECTING & ADJUSTMENT FLOPPY DISK. FOR NEC PC 5'	
J 1 8 2 4 1 B	点検、調整用フロッピーディスク NEC PC-9801用 3.5インチ INSPECTING &ADJUSTMENT FLOPPY DISK. FOR NEC PC 3.5'	
J 1 8 2 4 1 C	点検、調整用フロッピーディスク IBM PC/AT用 507 INSPECTING & ADJUSTMENT FLOPPY DISK. FOR IBM PC 5'	
J 1 8 2 4 1 D	点検、調整用フロッピーディスク IBM PC/AT用 3.54X INSPECTING &ADJUSTMENT FLOPPY DISK. FOR IBM PC3.5'	

作成承認印 | 配布許可印



“ ”  
“ ”

**F90X** FAA28052  
FAA28252  
FAA28452

**N90s** FAA28152

PARTS L 1ST

修理部品表

**Nikon** | NIKON CORPORATION  
Tokyo, Japan

© Copyright 1994  
ALL RIGHTS RESERVED  
無断転載を禁ず!!

A

B

FAA28052-R.3363.1

# F90X シャッター一部

## F90X Shutter

旧シャッター組品に新シャッター幕1B999-709、  
1B999-675を取付ける時には\*の部品を使用すること

製技 94 F-1033

F80 1,F90-940089

When mounting the new curtains (1 B994-709 and  
1 B999-675) on the old shutter assembly, use the parts ---  
marked with "\*".

NO.94F- 1033

F80 1,F90-940089

1

2

3

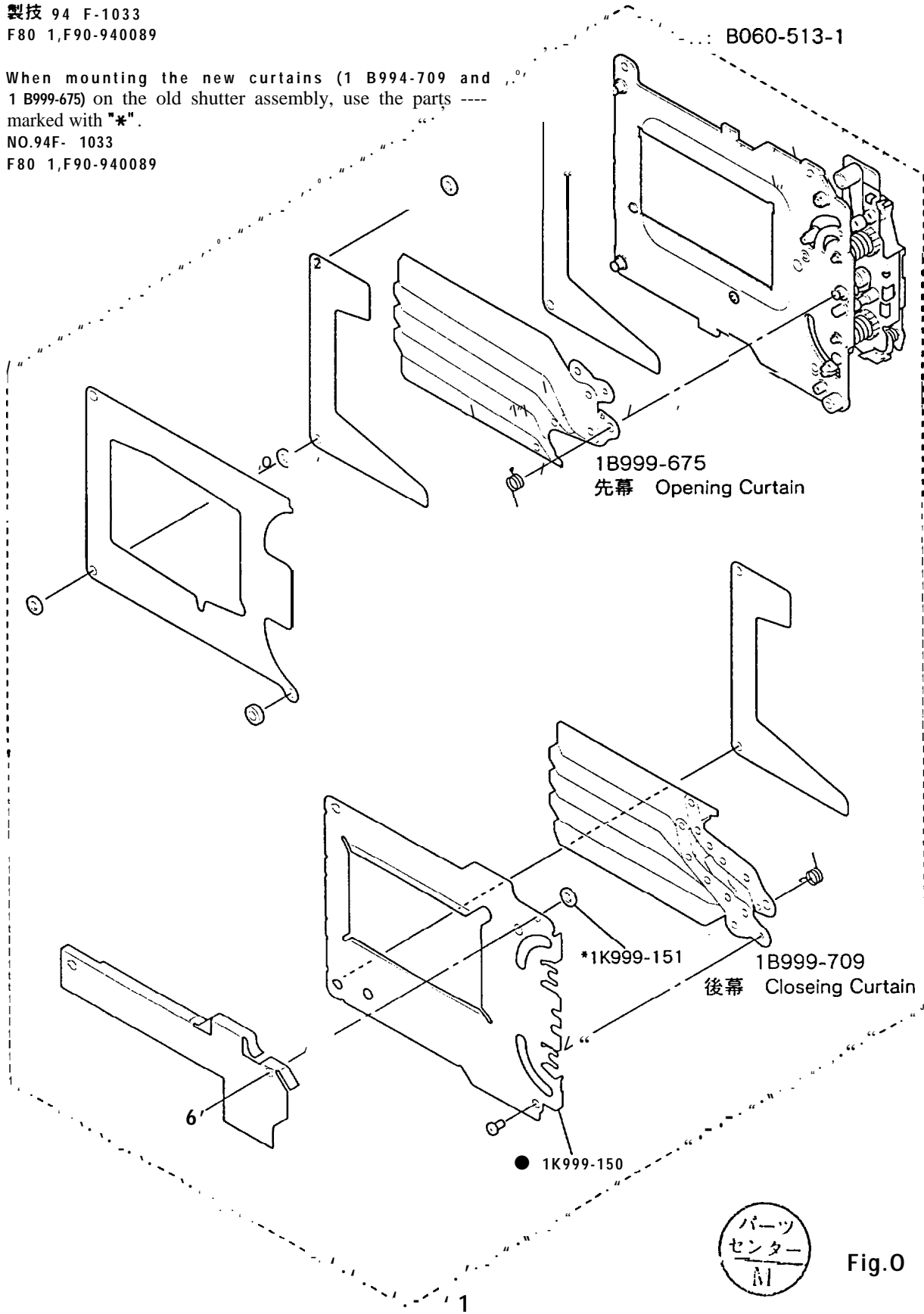
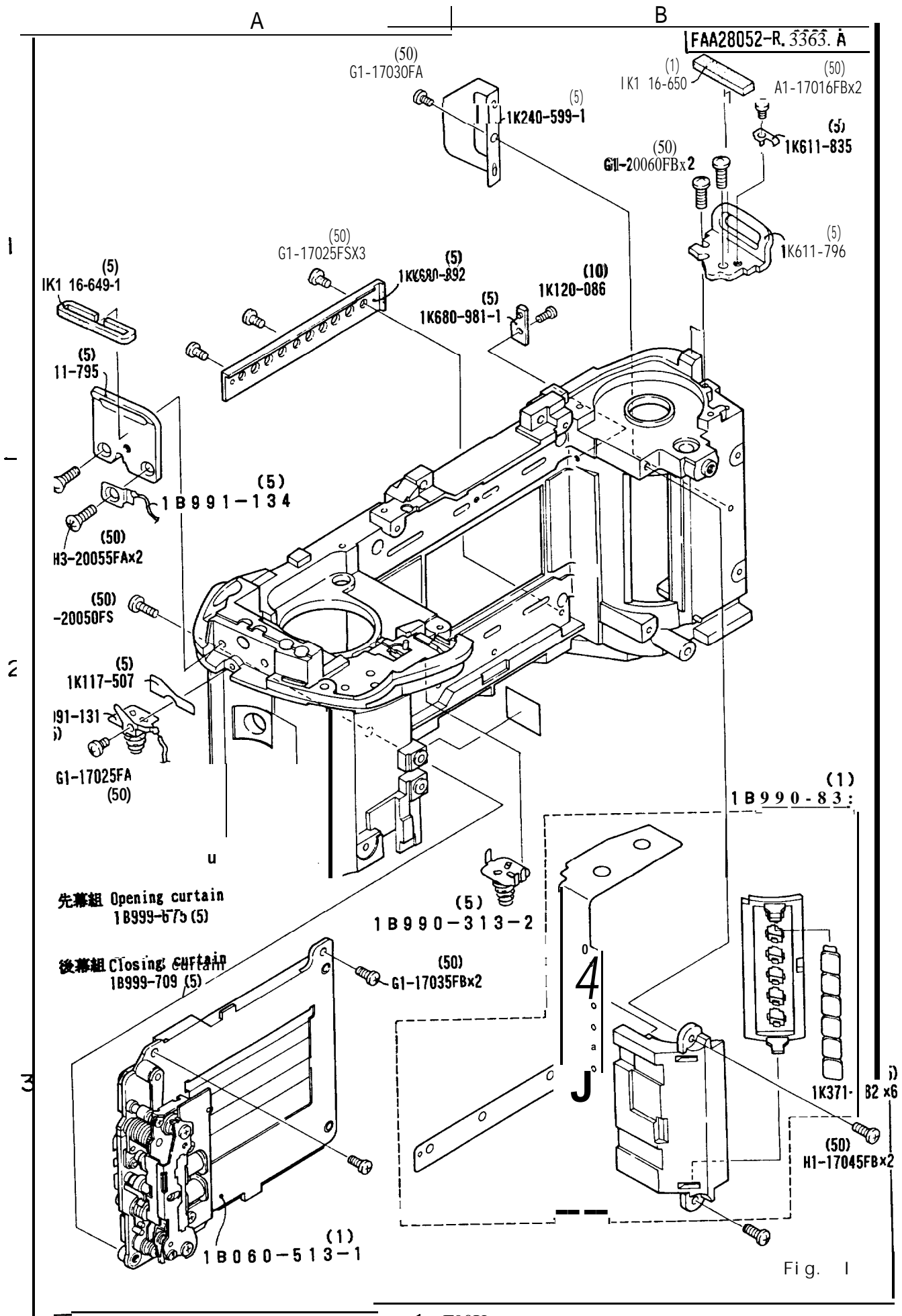


Fig.0



A

B

FAA28052-R. 3363. A

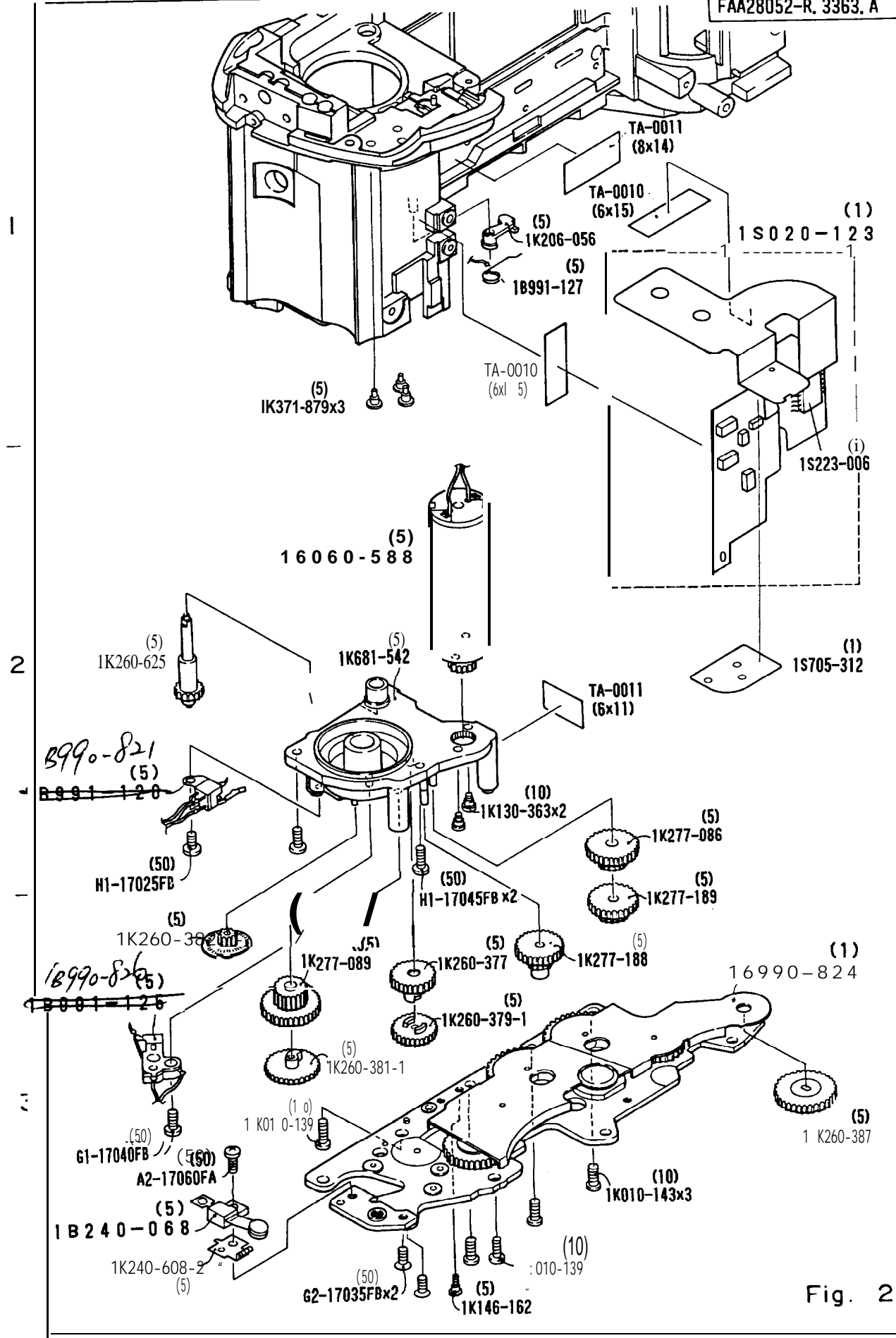


Fig. 2

A

B

FAA28052-R. 3363. A

1B991 -129(1)

0-365  
(10)

(50)  
B2-14018FAx3

(5)

(50)  
G2-17030FAx2

1 B 990-8!

(5)  
1 K260-376

(5)  
1K371-743-1

(5)  
1K681-546

2

(5)  
1K681-549-1

(5)  
1K201-103

(5)  
1K601-201

(5)  
1K201-104

(5)  
1K611-794

(50)  
H1-17045FB x2

(10)  
1K225-233

7

Fig. 3

A

B

FAA28052-R. 3363. A

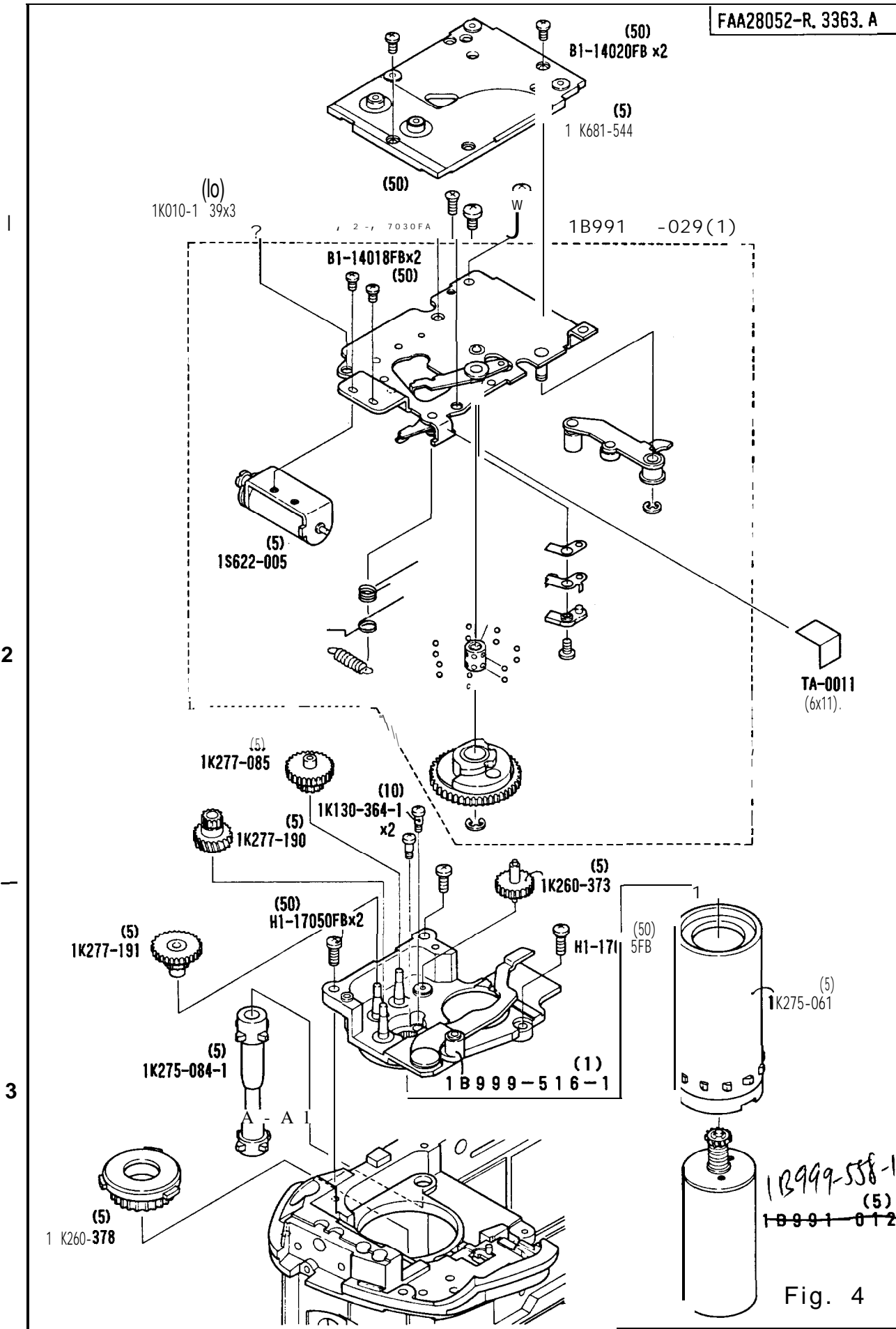
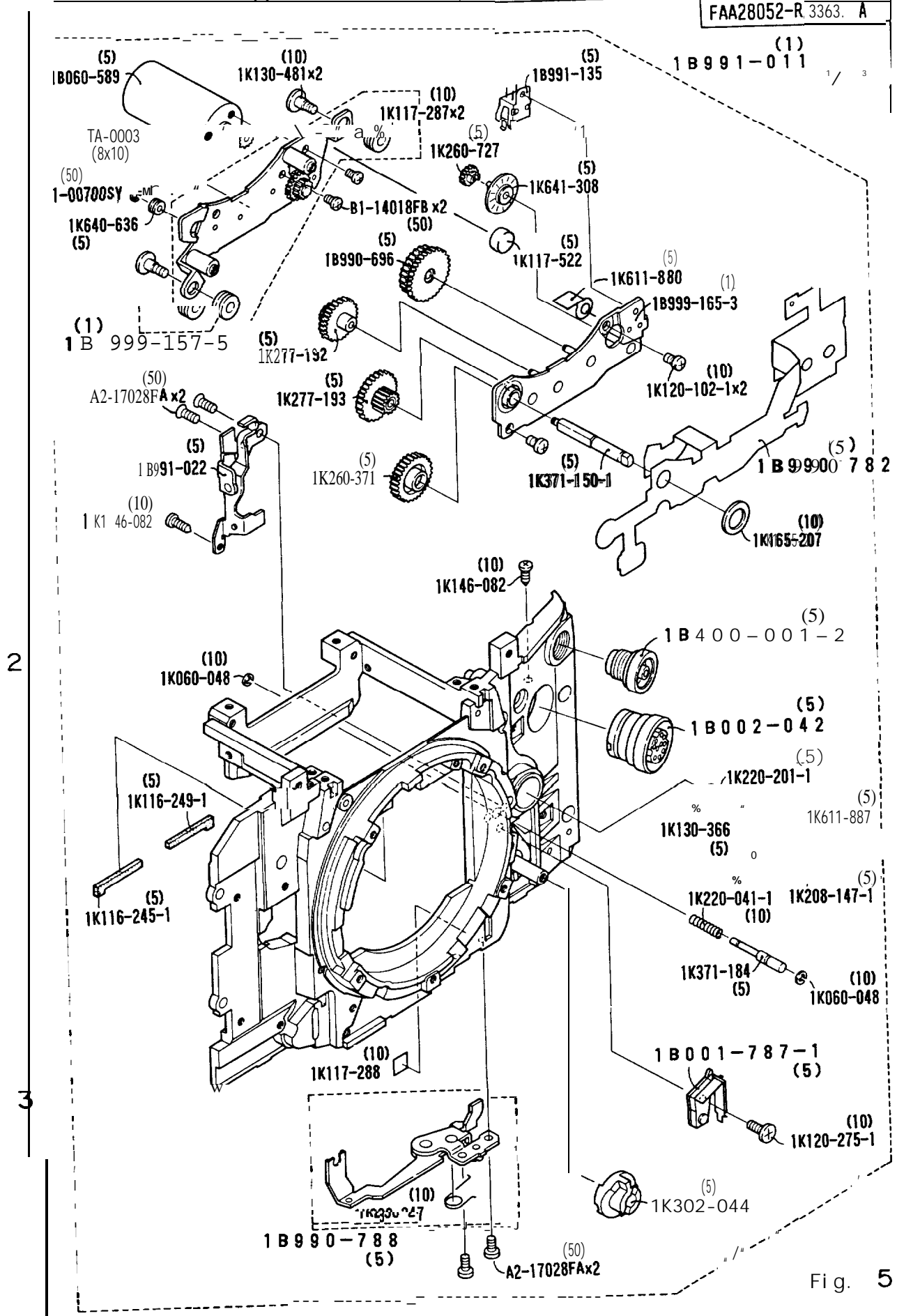


Fig. 4

A

B



2

3

Fig. 5

A

B

(1)  
1B991-011 2/3

1

2

3

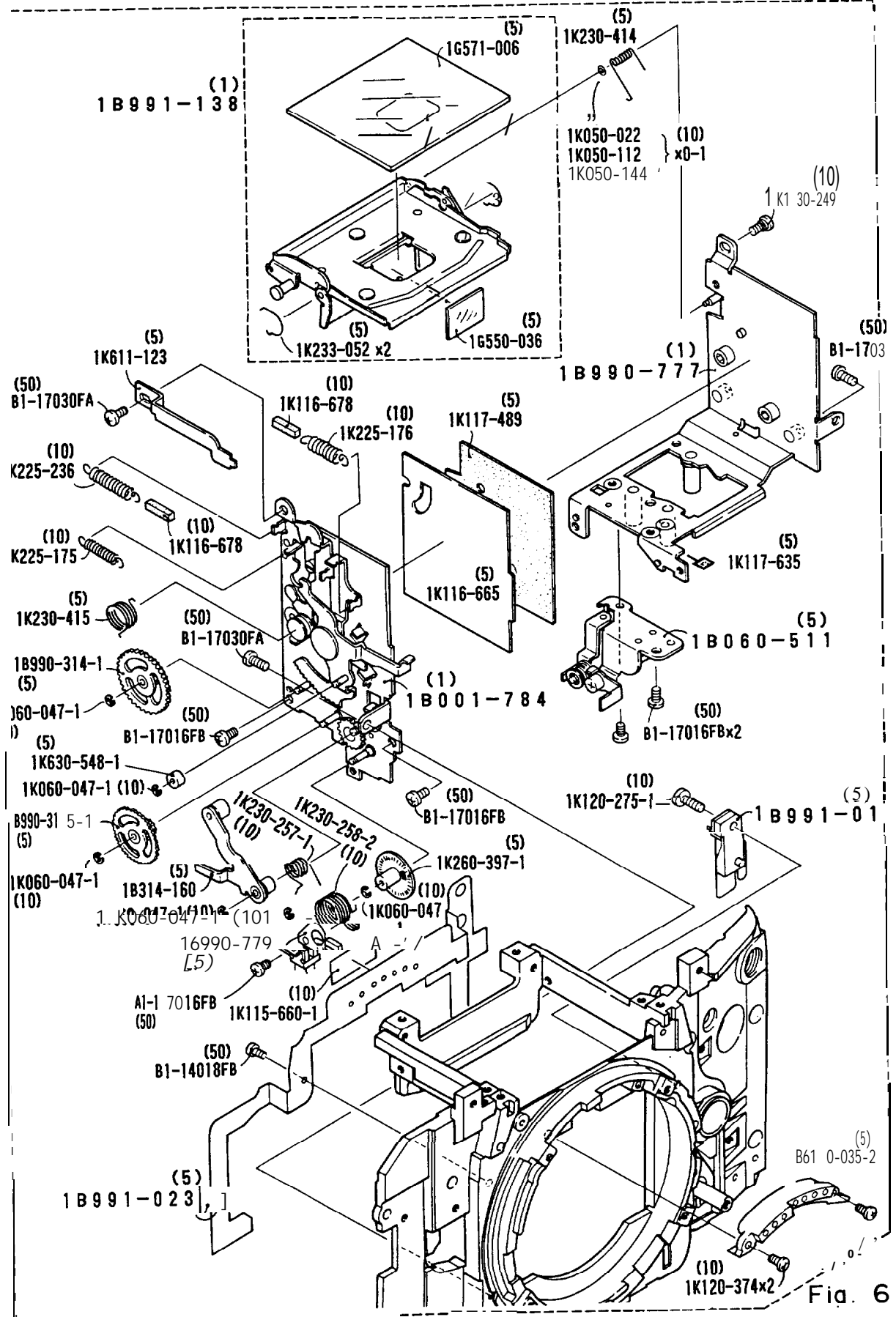


Fig. 6

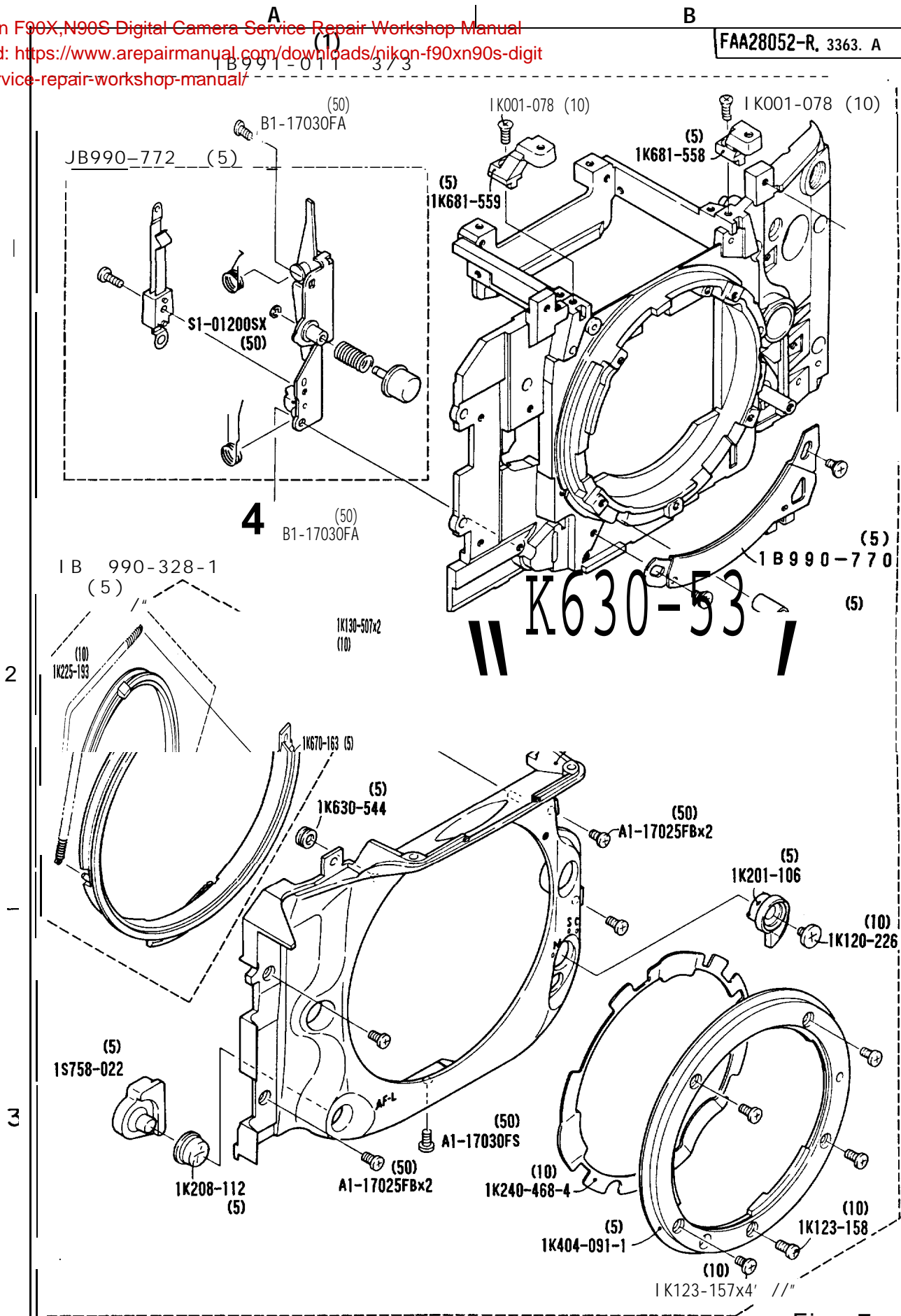


Fig. 7