

Product: 2005 Canon PIXMA iP6600D Printer Service Repair Workshop Manual
Full Download: <https://www.aresairmanual.com/downloads/2005-canon-pixma-ip6600d-printer-service-repair-workshop-manual/>

PIXMA IP6600D

SERVICE MANUAL

Canon

Sample of manual. Download All 58 pages at: <https://www.aresairmanual.com/downloads/2005-canon-pixma-ip6600d-printer-service-repair-workshop-manual/>
Copyright 2005, Canon U.S.A. This technical publication is the proprietary and confidential information of Canon U.S.A. which is hereby acknowledged. This document is intended for use as a reference only. It is not to be used for any other purpose.

Product: 2005 Canon PIXMA iP6600D Printer Service Repair Workshop Manual

Full Download: <https://www.arepairmanual.com/downloads/2005-canon-pixma-ip6600d-printer-service-repair-workshop-manual/>

product. When changes are made to the contents of the manual, Canon will release technical information when necessary. When substantial changes are made to the contents of the manual, Canon will issue a revised edition.

The following do not apply if they do not conform to the laws and regulations of the region where the manual or product is used:

Trademarks

Product and brand names appearing in this manual are registered trademarks or trademarks of the respective holders.

Copyright

All rights reserved. No parts of this manual may be reproduced in any form or by any means or translated into another language without the written permission of Canon Inc., except in the case of internal business use.

Copyright © 2005 by Canon Inc.

CANON INC.

Inkjet Device Quality Assurance Div. 2

451, Tsukagoshi 3-chome, Saiwai-ku, Kawasaki-shi, Kanagawa 212-8530, Japan



Sample of manual. Download All 58 pages at:

<https://www.arepairmanual.com/downloads/2005-canon-pixma-ip6600d-printer-service-repair-workshop-manual/>

I. MANUAL OUTLINE

This manual consists of the following three parts to provide information necessary to service the PIXMA iP6600D:

Part 1: Maintenance

Information on maintenance and troubleshooting of the PIXMA iP6600D

Part 2: Technical Reference

New technology and technical information such as FAQ's (Frequently Asked Questions) of the PIXMA iP6600D

Part 3: Appendix

Block diagrams and pin layouts of the PIXMA iP6600D

Reference:

This manual does not provide sufficient information for disassembly and reassembly procedures. Refer to the graphics in the separate Parts Catalog.



II. TABLE OF CONTENTS

Part 1: MAINTENANCE

1. MAINTENANCE

1-1. Adjustment, Periodic Maintenance, Periodic Replacement Parts, and Replacement Consumables by Service Engineer

1-2. Customer Maintenance

1-3. Product Life

1-4. Special Tools

1-5. Serial Number Location

2. LIST OF ERROR DISPLAY / INDICATION

2-1. Operator Call Errors

2-2. Service Call Errors

2-3. Other Error Messages

2-4. Warnings

2-5. Troubleshooting by Symptom

3. REPAIR

3-1. Notes on Service Part Replacement (and Disassembling / Reassembling)

3-2. Special Notes on Repair Servicing

3-3. Adjustment / Settings

(1) Paper feed motor adjustment

(2) Grease application

(3) Waste ink counter setting

(4) User mode

(5) Service mode

Service test print

EEPROM initialization

Waste ink counter reset

Destination settings

Button and LCD test

3-4. Verification Items

(1) Service test print

(2) EEPROM information print

4. PRINTER TRANSPORTATION

Part 2: TECHNICAL REFERENCE

1. NEW TECHNOLOGIES

2. CLEANING MODE AND AMOUNT OF INK PURGED

3. PRINT MODE

3-1. Resolution in Printing via Computer

3-2. Resolution in Borderless Printing

3-3. Resolution in Duplex Printing

- [3-4. Resolution in Camera Direct Printing](#)
- [3-5. Resolution in Card Direct Printing](#)
- [4. FAQ \(Problems Specific to the iP6600D and Corrective Actions\)](#)

Part 3: APPENDIX

- [1. BLOCK DIAGRAM](#)
- [2. CONNECTOR LOCATION AND PIN LAYOUT](#)
 - [2-1. Logic Board Ass'y](#)
 - [2-2. Print Beam Board](#)
 - [2-3. Card Slot Board \(Card Slot Unit\)](#)
 - [2-4. Operation Panel Board](#)
 - [2-5. Carriage Board \(Print Head Connector\)](#)
- [3. PIXMA iP6600D SPECIFICATIONS](#)
- [4. PRINT MEDIA SPECIFICATIONS](#)

Part 1

MAINTENANCE



1. MAINTENANCE

1-1. Adjustment, Periodic Maintenance, Periodic Replacement Parts, and Replacement Consumables by Service Engineer

(1) Adjustment

Adjustment	Timing	Purpose	Tool	Approx. time
EEPROM initialization (EEPROM settings)	At logic board ass'y replacement	To initialize settings other than the following: - USB serial number - Destination setting - Waste ink counter - CD / DVD correction value	None.	1 min.
Destination settings (EEPROM settings)	At logic board ass'y replacement	To set the destination.	None. Perform in the service mode.	1 min.
LCD language settings	At logic board ass'y replacement	To set the language to be displayed on the LCD.	None.	1 min.
Waste ink counter resetting (EEPROM settings)	- At logic board replacement - At waste ink absorber replacement	To reset the waste ink counter.	None. Perform in the service mode.	1 min.
CD / DVD detection sensor light volume correction*1	- At logic board replacement - At carriage unit replacement	To correct the light volume for the CD / DVD detection sensor.	None. (Automatically performed in the service test print)	2 min.
Ink system function check	- At logic board replacement - At platen unit replacement - At carriage unit replacement	To maintain detection functionality for presence of the ink tanks and each ink tank position.	None. Perform in the service mode.	1 min.
Paper feed motor position adjustment*2	At paper feed motor replacement	To adjust the belt tension. (Position the paper feed motor so that the belt is stretched tight.)	None.	5 min.
Grease application	- At carriage unit replacement - At PR shaft ass'y replacement - At CL base or CL gear replacement	- To maintain sliding properties of the carriage shaft and the lift cam shaft. - To protect the printer's sliding portions (gears).	- FLOIL KG-107A (QY9-0057)	1 min.

Note: DO NOT loosen the red screws at both ends of the carriage shaft, securing the print head position, as they are not re-adjustable.

*1: Only for CD / DVD printing supported regions.

*2: The red screws securing the paper feed motor may be loosened only at replacement of the paper feed motor unit.

(2) Periodic maintenance

No periodic maintenance is necessary.

(3) Periodic replacement parts

There are no parts in this printer that require periodic replacement by a service engineer.

(4) Replacement consumables

There are no consumables that require replacement by a service engineer.

1-2. Customer Maintenance

Adjustment	Timing	Purpose	Tool	Approx. time
Print head alignment	At print head replacement.	To ensure accurate dot placement.	- Printer buttons (automatic / manual) - Computer (automatic settings via the printer driver)	3 min.
Print head cleaning	When print quality is not satisfying.	To improve nozzle conditions.	- Printer buttons - Computer (settings via the printer driver)	1 min.
Print head deep cleaning	When print quality is not satisfying, and not improved by print head cleaning.	To improve nozzle conditions.	- Printer buttons - Computer (settings via the printer driver)	2 min.
Ink tank replacement	When an ink tank becomes empty. (No ink error)	-----	-----	2 min.
Paper feed roller cleaning	When paper does not feed properly.	To clean the paper feed rollers.	Printer buttons	2 min.
CD / DVD print position adjustment	At CD / DVD printing, when necessary.	To correct CD / DVD print position.	Computer (application software)	5 min.
Bottom plate cleaning	When the back side of the paper is smeared.	To clean the platen ribs.	- Printer buttons - Computer (settings via the printer driver)	1 min.
LCD contrast adjustment	When the LCD contrast is not desirable.	To set the desirable contrast.	- Printer buttons	1 min.
ASF sub-roller cleaning	When the paper fed from the ASF is smeared due to ink mist attached to the ASF sub-rollers.	To clean the ASF sub-rollers.	- Plain paper - Printer buttons (paper feed roller cleaning)	1 min.

1-3. Product Life

(1) Printer

Specified print volume (I) or the years of use (II), whichever comes first.

(I) Print volume: 10,000 pages

Black	1,500 character pattern	2,000 pages
Color	A4, 7.5% duty per color pattern	1,500 pages
	A4, photo, borderless printing	1,500 pages
	4 x 6, photo, borderless printing	4,500 pages
	Postcard, photo, borderless printing	500 pages

(II) Years of use: 5 years of use

(2) Print head

Print volume: 10,000 pages

Black	1,500 character pattern	2,000 pages
Color	A4, 7.5% duty per color pattern	1,500 pages
	A4, photo, borderless printing	1,500 pages
	4 x 6, photo, borderless printing	4,500 pages
	Postcard, photo, borderless printing	500 pages

(3) Ink tank (target value)

Pattern	Ink tank used	Print yield
Black text	CLI-8BK	Approx. 480 pages
Color chart	CLI-8BK	Approx. 970 pages
	CLI-8Y	Approx. 460 pages
	CLI-8M	Approx. 520 pages
	CLI-8C	Approx. 760 pages
Photo chart	CLI-8BK	Approx. 1,500 pages
	CLI-8Y	Approx. 320 pages
	CLI-8M	Approx. 670 pages
	CLI-8C	Approx. 1,000 pages
	CLI-8PM	Approx. 140 pages
	CLI-8PC	Approx. 200 pages

Black text: When printing the Canon standard pattern (1,500 characters per page) on A4 size plain paper, with the default settings in the Windows XP driver, using Word 2003.

Color chart: When printing the ISO/JIS-SCID N5 pattern on A4 size plain paper in bordered printing, with the default settings in the Windows XP driver, using Photoshop 7.0.

Photo chart: When printing the Canon standard pattern on 4" x 6" Photo Paper Plus Glossy in borderless printing, with the default settings in the Windows XP driver, using Windows XP Photo Printing Wizard.

The print yield in the table above is an average value measured in continuous printing, using the ink tank immediately after it is unsealed, until the ink is out. Ink yield may vary depending on texts and photos printed, application software, print mode, and type of paper used.

When the printer is turned on and while printing, each ink may be used for protecting the print head and maintaining print quality.

1-4. Special Tools

Name	Tool No.	Application	Remarks
FLOIL KG-107A	QY9-0057-000	To be applied to the sliding portions of the carriage shaft and lift cam shaft.	In common with the S500 and S520.

1-5. Serial Number Location

On the carriage flexible cable holder (visible on the left of the carriage after the printer is turned on, and the panel cover is opened).



[To the table of contents](#)

[To the top](#)

← <Part 1: 1. MAINTENANCE> →

2. LIST OF ERROR DISPLAY / INDICATION

Errors and warnings are displayed by the following ways:

- 1) Operator call errors are indicated by the Alarm LED lit, and the error and its solution are displayed on the LCD in text and by icon.
- 2) Warnings are displayed on the printer driver Status Monitor.
- 3) Error codes are printed in the "operator call/service call error record" area in EEPROM information print.

2-1. Operator Call Errors (by Alarm LED Blinking in Orange)

Error [Error code]	Message on the LCD	Solution	Remarks
No paper (ASF). [1000]	Auto sheet feeder. There is no paper. Load paper and press [OK].	Set the paper in the ASF, and press the Stop/Reset button.	
No CD / DVD tray. [1001]*1	There is no CD-R tray. Attach the tray and press [OK].	Set the CD / DVD tray, and press the Stop/Reset button.	
No paper in the front paper feed cassette. [1003]	Cassette. There is no paper. Load paper and press [OK].	Set the paper in the cassette, and press the Stop/Reset button.	
No CD or DVD. [1002] *1	Printable disc is not set. Correctly place a disc in the CD-R tray and press [OK].	Set a CD or DVD in the CD / DVD tray (which is ejected at error occurrence), and inset the CD / DVD tray in the proper position. Then, press the Stop/Reset button.	
Paper jam. [1300]	The paper is jammed. Clear the paper and press [OK].	Remove the jammed paper, and press the Stop/Reset button.	Error in paper feeding from the ASF.
Paper jam in the rear guide. [1303]			Error in the duplex printing unit.
Paper jam in the under guide. [1304]			Error in paper feeding from the cassette.
Front door close error. [1250]	Paper output tray is closed. Open the paper output tray.	Open the paper output tray.	The error is indicated if the paper output tray is closed at start of a print job, or while a print job is being performed.
No ink. [1600]	Ink has run out. Replace the ink tank and close the cover.	Replace the empty ink tank(s), or press the Stop/Reset button.	Pressing the Stop/Reset button will clear the error without ink tank replacement, however, ink may run out during printing.
Ink tank not installed. [1660]	The following ink tank cannot be recognized.	Install the applicable ink tank(s) properly, and confirm that the LED's of all the ink tanks light red.	
The print head is not installed [1401], or it is not properly installed (print head temperature sensor error [1403] / faulty EEPROM data of the print head [1405])	Print head is not installed. Install the print head.	Install the print head properly.	
	The type of print head is incorrect. Install the correct print head.		
Inner cover open.	Inner cover is open. Close the	Close the inner cover, and press	

[1841]* ²	inner cover and press [OK].	the Stop/Reset button.	
Inner cover open during printing on paper. [1846]* ²		Close the inner cover, and press the Stop/Reset button.	
Inner cover open during printing on paper (print continuable). [1851]* ¹		Close the inner cover, and press the Stop/Reset button.	
Inner cover open during printing on paper (print NOT continuable). [1856]* ¹		Close the inner cover, and press the Stop/Reset button to clear the error. The paper being printed at error occurrence will be ejected without printing the remaining data for the ejected paper, then printing will resume from the next page.	
Inner cover closed during CD / DVD printing (print continuable). [1850]* ¹	Open the inner cover, place the CD-R tray and press [OK].	Open the inner cover which functions as the CD / DVD tray feeder, set the CD / DVD tray in the feeder, and press the Stop/Reset button.	
Inner cover closed during CD / DVD printing (print NOT continuable). [1855]* ¹		Open the inner cover, and press the Stop/Reset button to clear the error. The CD or DVD being printed at error occurrence will be ejected without printing the remaining data for the ejected CD or DVD, then the next print job will be done.	
Multiple ink tanks of the same color installed. [1681]	(Applicable ink tank icon) More than one ink tank of the following color is installed.	Replace the wrong ink tank(s) with the correct one(s).	
Ink tank in a wrong position. [1680]	Some ink cartridges are not installed in place.	Install the ink tank(s) in the correct position.	
Warning: The waste ink absorber becomes almost full. [1700]	The waste ink absorber is almost full. Press [OK] to continue but early replacement recommended. <See manual>	Press the Stop/Reset button.	The service call error, indicating the waste ink absorber is full, is likely to occur soon.
The connected digital camera or digital video camera does not support Camera Direct Printing. [2001]	Incompatible device detected. Remove the device.	Remove the cable between the camera and the printer.	
Automatic duplex printing cannot be performed. [1310]	This paper is not compatible with duplex printing. Remove the paper and press [OK].	Press the Stop/Reset button to eject the paper being used at error occurrence. Printing will resume from on the front side of the next page.	Data which was to be printed on the back side of paper at error occurrence is skipped (not printed).
Failed in automatic print head alignment. [2500]	Auto head align has failed. Press [OK] and repeat operation. <See manual>	Press the Stop/Reset button. - If paper is being fed at error occurrence, the error is indicated after the paper is ejected. - If the error occurs, the print head alignment values are not changed. - After exit from the error by the Stop/Reset button, the automatic print head alignment will not be re-done.	The error is indicated when the pattern is not printed due to no ink or non-ejection of ink, or when the sensor's AD value is incorrect.

The remaining ink amount unknown. [1683]	(Applicable ink tank icon) The remaining level of the following ink cannot be correctly detected.	An ink tank which has once been empty is installed. Replace the applicable ink tank with a new one.	Printing with a once-empty or refilled ink tank can damage the print head. If printing is continued without replacing the "no-good" ink tank, press the Stop/Reset button for 5 sec. or longer to record the use of a refilled ink tank. Note: After the above operation, the function to detect the remaining ink amount is disabled.
Ink tank not recognized. [1684]	(Applicable ink tank icon) The following ink tank cannot be recognized.	A non-supported ink tank is installed (the ink tank LED is turned off). Install the supported ink tanks.	
Ink tank not recognized. [1410 to 1419]	(Applicable ink tank icon) The following ink tank cannot be recognized.	An error occurred in an ink tank (the ink tank LED is turned off). Replace the ink tank(s).	
Access cover open. [1200]	Cover is open. Close the cover.	Close the access cover.	

*1: Only for models supporting CD / DVD printing

*2: Only for models not supporting CD / DVD printing

2-2. Service Call Errors (by Cyclic Blinking in Orange (Alarm LED) and Green (Power LED), or Alarm LED Lit in Orange)

Service call errors are indicated by the number of cycles the Alarm and Power LEDs blink, and the corresponding error code is displayed on the LCD.

Cycles of blinking in orange (Alarm LED) and green (Power LED)	Error [Error code]	Conditions	Solution (Replacement of listed parts, which are likely to be faulty)
2 times	Carriage error [5100]	An error occurred in the carriage encoder signal.	- Carriage unit (QM2-2298) - Timing slit strip film (QC1-6394) - Logic board ass'y (QM2-2745)* ¹ - Carriage motor (QK1-1500)
3 times	Line feed error [6000]	An error occurred in the line feed signal.	- Timing sensor unit (QM2-2683) - Timing slit disk film (QC1-6229) - Feed roller ass'y (QL2-0925) - Platen unit (QM2-2313)

			- Logic board ass'y (QM2-2745)* ¹ - Paper feed motor (QK1-1502)
4 times	Purge cam sensor error [5C00]	An error occurred in the purge unit.	- Purge unit (QM2-2299) - Logic board ass'y (QM2-2745)* ¹
5 times	ASF (cam) sensor error [5700]	This error takes place when feeding paper from the ASF after an error occurred in the ASF cam sensor.	- Sheet feed unit (QM2-2312)
6 times	Internal temperature error [5400]	The internal temperature is not proper.	- Logic board ass'y (QM2-2745)* ¹
7 times	Waste ink absorber full [5B00]	The waste ink absorber is full.	- Ink absorber kit (QY5-0147)
8 times	Print head temperature rise error [5200]	The print head temperature exceeded the specified value.	- Print head (QY6-0063) - Logic board ass'y (QM2-2745)* ¹
9 times	EEPROM error [6800]	A problem occurred in writing to the EEPROM.	- Logic board ass'y (QM2-2745)* ¹
11 times	Carriage lift mechanism error [5110]	The carriage did not move up or down properly.	- PR lift shaft ass'y (QL2-0936) - Sheet feed unit (QM2-2312) - Logic board ass'y (QM2-2745)* ¹ - Carriage lift sensor unit (QM2-2678)
12 times	AP position error [6A00]	An error occurred in the AP motor during purging operation.	- Sheet feed unit (QM2-2312) - Logic board ass'y (QM2-2745)* ¹ - Purge unit (QM2-2208)
13 times	Paper feed position error [6B00]	An error occurred in the paper feed motor.	- Sheet feed unit (QM2-2312) - Logic board ass'y (QM2-2745)* ¹
14 times	Paper feed cam sensor error [6B10]	An error occurred in the paper feed cam sensor during paper feeding from the front paper feed cassette. This error is also indicated when the waste ink counter is 60% or more, and a paper jam occurs.	- Sheet feed unit (QM2-2312) - Logic board ass'y (QM2-2745)* ¹
15 times	USB Host VBUS overcurrent [9000]	The USB Host VBUS is overloaded.	- Logic board ass'y (QM2-2745)* ¹
16 times	Valve sensor error [6C00]	An error occurred in the valve sensor during cleaning.	- Logic board ass'y (QM2-2745)* ¹ - Purge unit (QM2-2208)
17 times	Motor driver error [6D00]	The AD conversion value indicating the motor driver temperature is not proper.	- Logic board ass'y (QM2-2745)* ¹
19 times	Ink tank position sensor error [6502]	None of the ink tank position is detected.	- Platen unit (QM2-2313) - Logic board ass'y (QM2-2745)* ¹
20 times	Other hardware error [6500]	The PCI bus error is detected by the ASIC.	- Logic board ass'y (QM2-2745)* ¹
Continuous	ROM error	The check sum value is incorrect in the ROM	- Logic board ass'y (QM2-

alternate blinking		check at hard-power-on.	2745)* ¹
Alarm LED lit	RAM error	The RAM error occurred in the RAM check at hard-power-on.	- Logic board ass'y (QM2-2745)* ¹

*1: Before replacement of the logic board ass'y, check the waste ink amount (by service test print or EEPROM information print). If the waste ink amount is 7% or more, also replace the ink absorber kit (QY5-0147) when replacing the logic board ass'y.

[\[See Section 3-3. Adjustment / Settings, \(5\) Service mode, for details.\]](#)

2-3. Other Error Messages

Message on the LCD	Cause	Solution
Cannot print via wireless communication. - No photo data - Unsupported photo data - Photo data too large	The received image data was invalid, or the data size was too large, in infrared communication from a mobile phone.	The error message is displayed for a while, then the LCD automatically returns to the display before the error occurrence.
The selected paper cannot be fed from cassette. Change the paper source.	The paper type being used is not supported for paper feeding from the cassette. (Business Card, Credit Card size paper and Photo Stickers are not supported.)	Change the paper source to the ASF.
Cannot specify the followings together. Change one of the settings.	Settings made conflict each other.	The error message is displayed for a while, then the LCD automatically returns to the display before the error occurrence.
There are no photos in memory card.	Supported image files are not in the memory card.	The error message is displayed for a while, then disappears.
The value exceeds the number of copies you can print.	During selecting images or specifying the number of copies, the total print quantity exceeds the prescribed value of 999.	After the error message is displayed for a while, the last operation before the error is cancelled, and the total print quantity returns to the value before the error.
Memory card is not set. Insert the card after checking the direction.	No memory card is inserted in the slot.	Set a memory card.
DPOF information is not saved in the memory card.	DPOF print was selected in the menu, but no DPOF files are contained in the memory card.	The error message is displayed for a while, then the LCD automatically returns to the display before the error occurrence.
The number of copies to print is not set. Input the number of copies.	Multi-photo print was attempted without specifying the print quantity (with the print quantity left "0" (zero)).	The error message is displayed for a while, then disappears. Specify the print quantity.
This layout is available only for A4 or 8.5"x11"(LTR).	In Layout print, "Mixed 1, 2, or 3" which is available only with A4 or LTR size paper is selected, but the paper size is not set to A4 or LTR.	The error message is displayed for a while, then the LCD automatically returns to the display before the error occurrence.
Settings cannot be changed when printing stickers.	With Sticker print selected, the Settings button was pressed.	The error message is displayed for a while, then the LCD automatically returns to the display before the error occurrence.
Change the setting after removing the card.	With a memory card inserted in the slot, change of the Read/Write attribute was attempted.	The error message is displayed for a while, then the LCD automatically returns to the display before the error occurrence.
The card is currently write-enabled. Set to read-only mode before performing operation.	With the memory card set to the Read/Write mode, Card Direct printing operation was attempted from the menu.	The error message is displayed for a while, then the LCD automatically returns to the display before the error occurrence.

2-4. Warnings

Warning	Message on the LCD	Solution
Low ink	The following ink is low. Continue? (Icon of each ink tank) Yes No	<ul style="list-style-type: none"> - Select Yes, and press the OK button. => Printing starts, and it is indicated on the LCD. - Select No, and press the OK button. => Printing is cancelled, and the LCD returns to the display immediately before printing was attempted.
	In Camera Direct Printing, only "Yes" can be selected.	
Print head temperature rise	If the print head temperature does not fall, the error code "5200" is displayed, indicating the print head temperature rise error.	<p>When the print head temperature falls, the error is automatically cleared.</p> <p>Note: If the print head temperature exceeds the specified limit when the access cover (scanning unit) is opened, the carriage does not move to the ink tank replacement position.</p>
Protection of excess rise of the print head temperature	If the print head temperature does not fall, the error code "5200" is displayed, indicating the print head temperature rise error.	If the print head temperature exceeds the specified limit, an intermission is inserted during printing.
Restrictions on paper	The current paper cannot be set. Change the size and type.	Re-select the supported paper type and size.
Recommendation of the print head alignment (only on arrival of the printer)	Head alignment required. Load paper and press [OK]. Yes No	<ul style="list-style-type: none"> - Select Yes, and press the OK button. => Automatic print head alignment is done. - Select No, and press the OK button. => The procedures on arrival of the printer are finished.
Cancellation of image select information	Reset the selected photo information? Yes No	<p>When one or more images are selected in Multi-photo print or Layout print, and if a user tries to display the menu or sub-menu, the message is displayed.</p> <ul style="list-style-type: none"> - Select Yes, and press the OK button. => The image selection is cancelled, and the menu or sub-menu is displayed. - Select No, and press the OK button. => The LCD returns to the display immediately before the message was displayed.
Cancellation of trimming information	Reset trimming effect? Yes No	<p>With an image trimmed, if CD / DVD print is attempted, the message is displayed.</p> <ul style="list-style-type: none"> - Select Yes, and press the OK button. => The image trimming is cancelled, and the procedures for CD / DVD print are continued. - Select No, and press the OK button. => The LCD returns to the display immediately before the message was displayed.

2-5. Troubleshooting by Symptom

	Symptom	Solution
Faulty operation	The power does not turn on. The power turns off immediately after power-on.	<ul style="list-style-type: none"> - Confirm the connection of <ul style="list-style-type: none"> - the power cord, and - between the logic board and the power supply unit. - Replace the <ul style="list-style-type: none"> - AC adapter, or - logic board ass'y*1.
	A strange noise occurs.	<ul style="list-style-type: none"> - Remove foreign material. - Attach a removed part if any. - Check the operation of the moving parts (such as purge unit, carriage unit, and paper feeding mechanism) - Replace a faulty part, if any.
	Nothing is displayed on the LCD.	<ul style="list-style-type: none"> - Confirm the connection between the operation panel and the logic board. - Replace the <ul style="list-style-type: none"> - LCD, or - logic board ass'y*1.
	A portion of the LCD is not displayed.	<ul style="list-style-type: none"> - Perform the button and LCD test in the service mode, and confirm that the LCD is displayed without any segments missing. - Confirm the connection between the operation panel and the logic board. - Replace the <ul style="list-style-type: none"> - LCD, or - logic board ass'y*1.
	Paper feed problems (multi-feeding, skewed feeding, no feeding)	<ul style="list-style-type: none"> - Examine the inside to confirm that no parts are damaged, and the rollers are clean. - Remove foreign material. - Adjust the paper guide properly. - Confirm the connection of each harness and the logic board. - Replace the <ul style="list-style-type: none"> - sheet feeder unit, - cassette, or - logic board ass'y*1.
	Carriage movement problems (contact to other parts, strange noise)	<ul style="list-style-type: none"> - Confirm that the timing slit strip film is free from damage or grease. - Clean the timing slit strip film. - Replace the <ul style="list-style-type: none"> - timing slit strip film, or - carriage unit. - Remove foreign material.
Unsatisfactory print quality	No printing, or no color ejected.	<ul style="list-style-type: none"> - Replace the <ul style="list-style-type: none"> - ink tank, - print head*2, or - logic board ass'y*1. - Remove foreign material from the purge unit caps,

	<ul style="list-style-type: none"> if any. - Replace the purge unit.
<p>Printing is faint, or white lines appear on printouts even after print head cleaning.</p> <p>Line(s) not included in the print data appears on printouts.</p>	<ul style="list-style-type: none"> - Remove and re-install the print head. - Replace the <ul style="list-style-type: none"> - ink tank, - print head*2, - purge unit, or - logic board ass'y*1.
Paper gets smeared.	<ul style="list-style-type: none"> - Feed several sheets of paper. - Perform bottom plate cleaning. - Clean the paper path with cotton swab or cloth. - Clean the ASF sub-rollers.
A part of a line is missing on printouts.	<p>Replace the</p> <ul style="list-style-type: none"> - ink tank, or - print head*2.
Color hue is incorrect.	<ul style="list-style-type: none"> - Replace the <ul style="list-style-type: none"> - ink tank, or - print head*2. - Perform print head alignment.
Printing is incorrect.	<p>Replace the logic board ass'y*1.</p>
No ejection of black ink.	<ul style="list-style-type: none"> - Replace the <ul style="list-style-type: none"> - ink tank, or - print head*2. - Remove foreign material from the purge unit caps, if any. - Replace the purge unit.
Graphic or text is enlarged on printouts.	<p>When enlarged in the carriage movement direction:</p> <ul style="list-style-type: none"> - Clean grease or oil off the timing slit strip film - Replace the <ul style="list-style-type: none"> - timing slit strip film, - carriage unit, or - logic board ass'y*1. <p>When enlarged in the paper feed direction:</p> <ul style="list-style-type: none"> - Clean grease or oil off the timing slit disk film - Replace the <ul style="list-style-type: none"> - timing slit disk film, - timing sensor unit, or - logic board ass'y*1.

*1: Before replacement of the logic board ass'y, check the waste ink amount (by service test print or EEPROM information print). If the waste ink amount is 7% or more, also replace the ink absorber kit (QY5-0147) when replacing the logic board ass'y.
[\[See Section 3-3. Adjustment / Settings, \(5\) Service mode, for details.\]](#)

*2: Replace the print head only after the print head deep cleaning is performed 2 times, and when the problem persists.

[To the table of contents](#)

[To the top](#)

3. REPAIR

3-1. Notes on Service Part Replacement (and Disassembling / Reassembling)

Service part	Notes on replacement*1	Adjustment / settings	Operation check
Logic board ass'y QM2-2745	<ul style="list-style-type: none"> - Before removal of the logic board ass'y, remove the power cord, and allow for approx. 1 minute (for discharge of capacitor's accumulated charges), to prevent damages to the logic board ass'y. - Before replacement, check the waste ink amount (by service test print or EEPROM information print). If the waste ink amount is 7% or more, also replace the ink absorber kit when replacing the logic board ass'y. <p>[See 3-3. Adjustment / Settings, (5) Service mode, for details.]</p>	<p>After replacement:</p> <ol style="list-style-type: none"> 1. Initialize the EEPROM. 2. Reset the waste ink counter. 3. Set the destination in the EEPROM. 4. Correct the CD / DVD and automatic print head alignment sensors. 5. Check the ink system function. <p>[See 3-3. Adjustment / Settings, (5) Service mode, for details of 1 to 5]</p> <ol style="list-style-type: none"> 6. Perform the print head alignment in the user mode. 	<ul style="list-style-type: none"> - EEPROM information print - Service test print - Printing via USB connection - Direct printing from a digital camera
Ink absorber kit QY5-0147		<p>After replacement:</p> <ol style="list-style-type: none"> 1. Reset the waste ink counter. <p>[See 3.3. Adjustment / Settings, (5) Service mode.]</p>	<ul style="list-style-type: none"> - Service test print - EEPROM information print
Carriage unit QM2-2298		<p>At replacement:</p> <ol style="list-style-type: none"> 1. Apply grease to the sliding portions. <p>[See 3-3. Adjustment / Settings, (2) Grease application.]</p> <p>After replacement:</p> <ol style="list-style-type: none"> 1. Correct the CD / DVD and automatic print head alignment sensors. <p>[See 3.3. Adjustment / Settings, (5) Service mode.]</p> <ol style="list-style-type: none"> 2. Check the ink system function. <p>[See 3.3. Adjustment / Settings, (5) Service mode.]</p> <ol style="list-style-type: none"> 3. Perform the print head alignment in the user mode. 	<ul style="list-style-type: none"> - Service test print (Confirm CD / DVD and automatic print head alignment sensor correction, and ink system function.)
Paper feed motor QK1-1502	<ul style="list-style-type: none"> - The red screws securing the paper feed motor are allowed to be loosened. (DO NOT loosen any other red screws.) 	<p>At replacement:</p> <ol style="list-style-type: none"> 1. Adjust the paper feed motor. <p>[See 3-3. Adjustment / Settings, (1) Paper feed motor adjustment.]</p>	
Platen unit		<p>At replacement:</p>	<ul style="list-style-type: none"> - Service test print

QM2-2313		1. Check the ink system function. [See 3.3. Adjustment / Settings, (5) Service mode.]	
PR lift shaft ass'y QL2-0936		At replacement: 1. Apply grease to the sliding portions. [See 3.3. Adjustment / Settings, (2) Grease application.]	- Service test print
Timing slit strip film QC1-6394	- Upon contact with the film, wipe the film with ethanol. - Confirm no grease is on the film. (Wipe off any grease thoroughly with ethanol.) - Do not bend the film	After replacement: 1. Perform the print head alignment in the user mode.	- Service test print
Timing slit disk film QC1-6229			
Print head QY6-0063		After replacement: 1. Perform the print head alignment in the user mode.	- Service test print
LCD viewer unit QM2-2305 Panel board ass'y QM2-2747			- Button and LCD test (in the service mode)

*1: General notes:

- Make sure that the flexible cables and wires in the harness are in the proper position and connected correctly.
[\[See 3-2. Special Notes on Repair Servicing, \(2\) Flexible cable and harness wiring, connection, for details.\]](#)
- Do not drop the ferrite core, which may cause damage.
- Protect electrical parts from damage due to static electricity.
- Before removing a unit, after removing the power cord, allow the printer to sit for approx. 1 minute (for capacitor discharging to protect the logic board ass'y from damages).
- Do not touch the timing slit strip film and timing slit disk film. No grease or abrasion is allowed.
- Protect the units from soiled with ink.
- Protect the housing from scratches.
- Exercise caution with the red screws, as follows:
 - i. The red screws of the paper feed motor may be loosened only at replacement of the paper feed motor unit (DO NOT loosen them in other cases).
 - ii. DO NOT loosen the red screws on both sides of the main chassis, securing the carriage shaft positioning (they are not adjustable in servicing).

[To the table of contents](#)

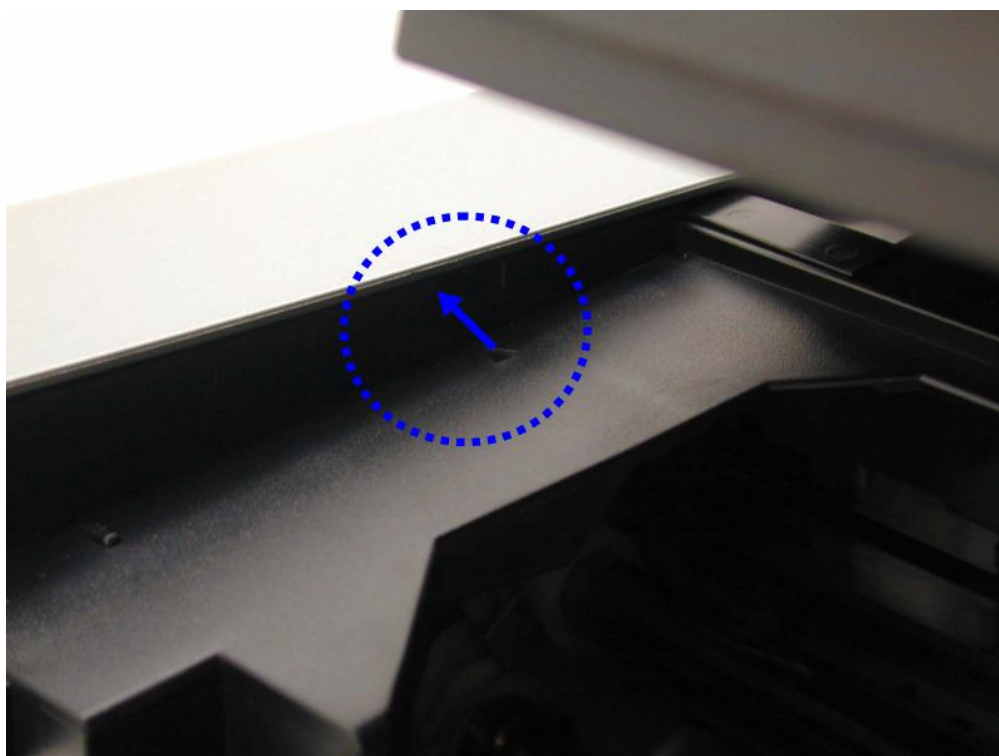
[To the top](#)



3-2. Special Notes on Repair Servicing

(1) External cover removal

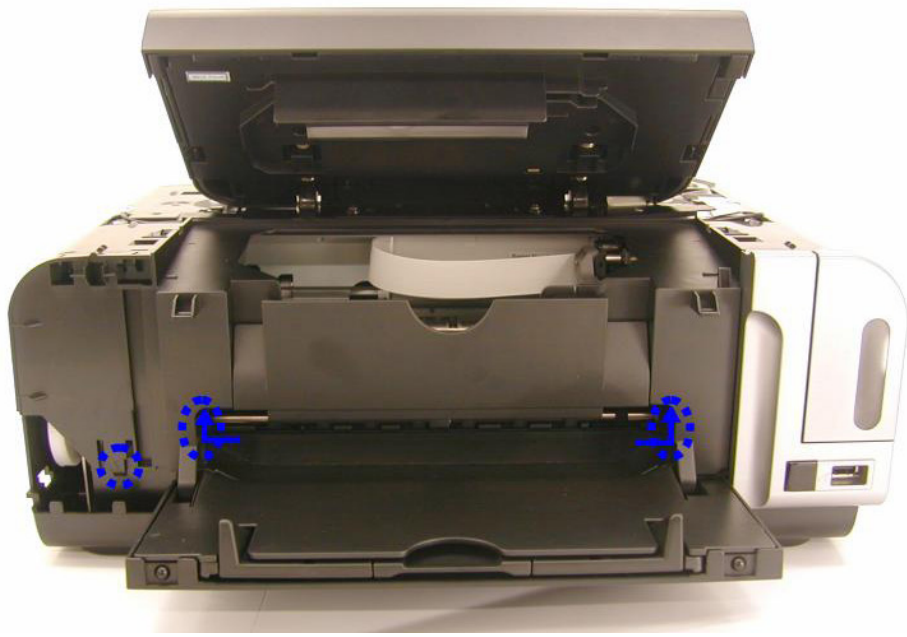
- (I) Open the access cover, and release the hooks on the left and right side of the printer (indicated by the blue circles) to remove the side covers.



- (II) Remove the screws (at 2 locations) and the flexible cable (at 1 location).

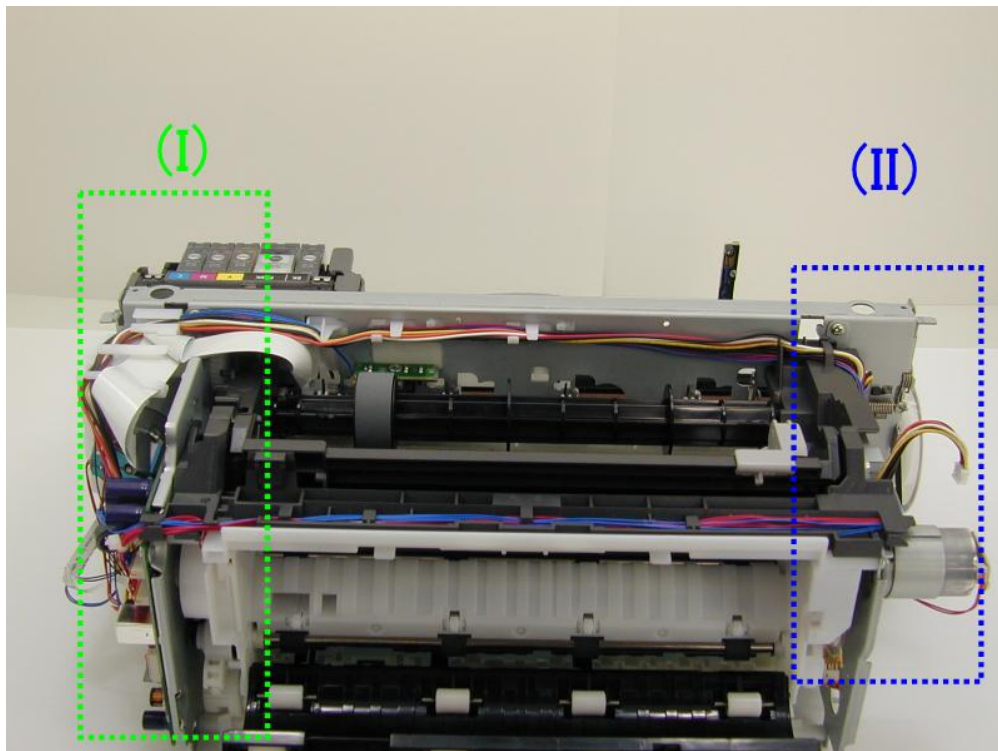


(III) Release the hooks and remove the front left cover as shown below.

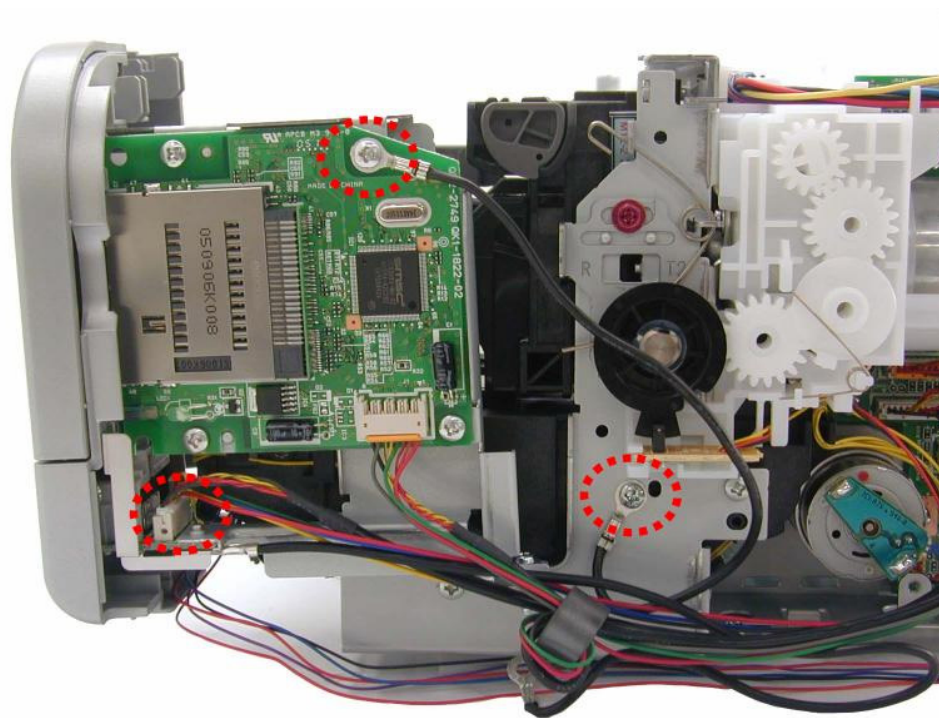
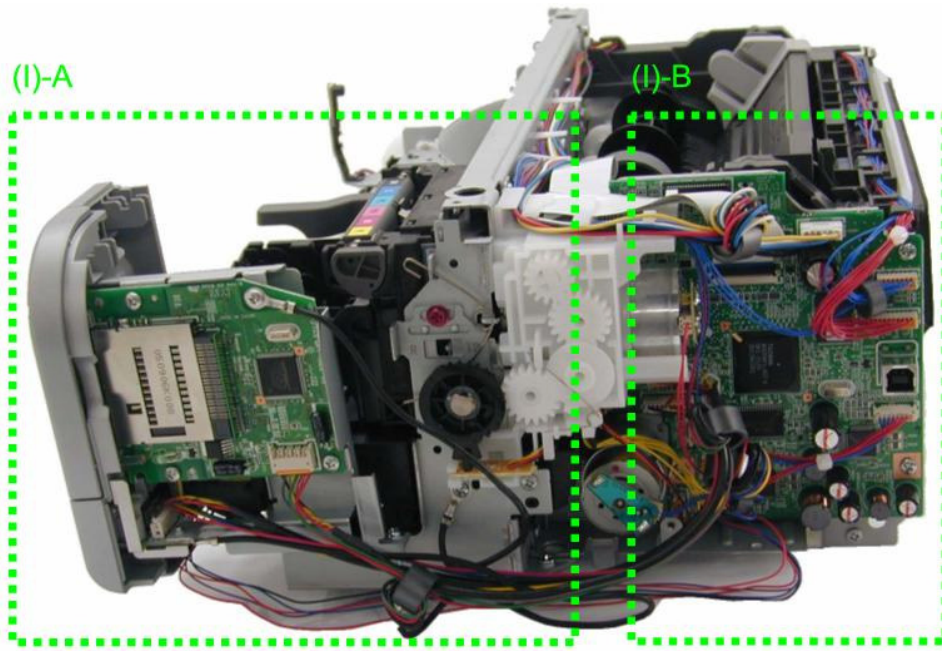


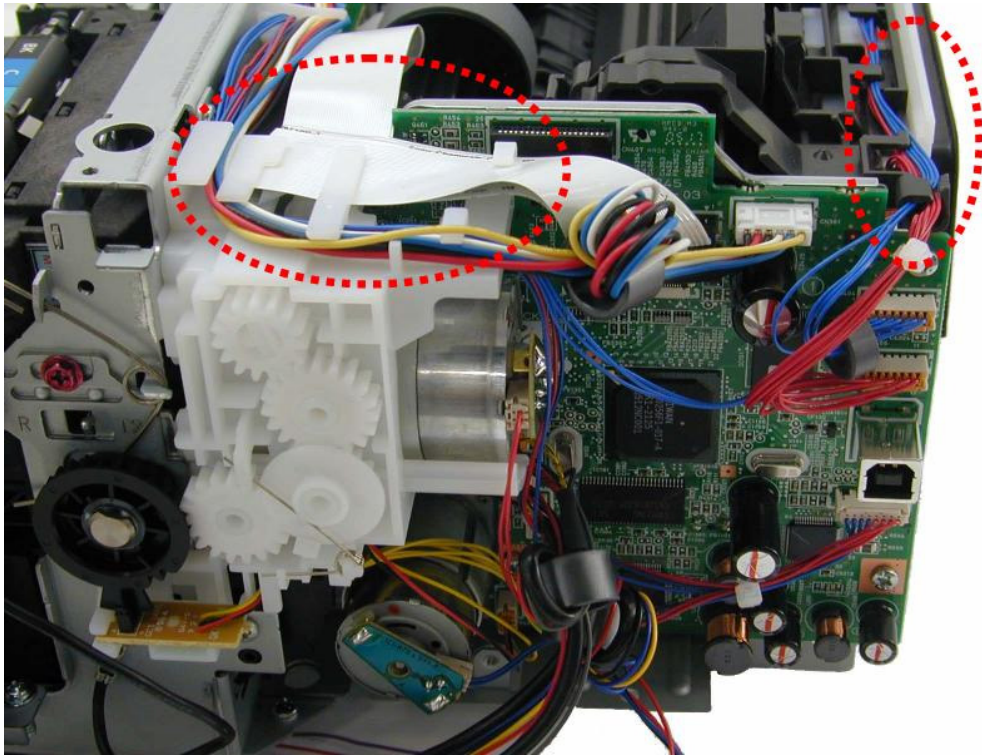
(2) Flexible cable and harness wiring, connection

Be careful of wiring of the flexible cables and harness. Improper wiring or connection may cause breakage of a line, leading to ignition or emission of smoke.

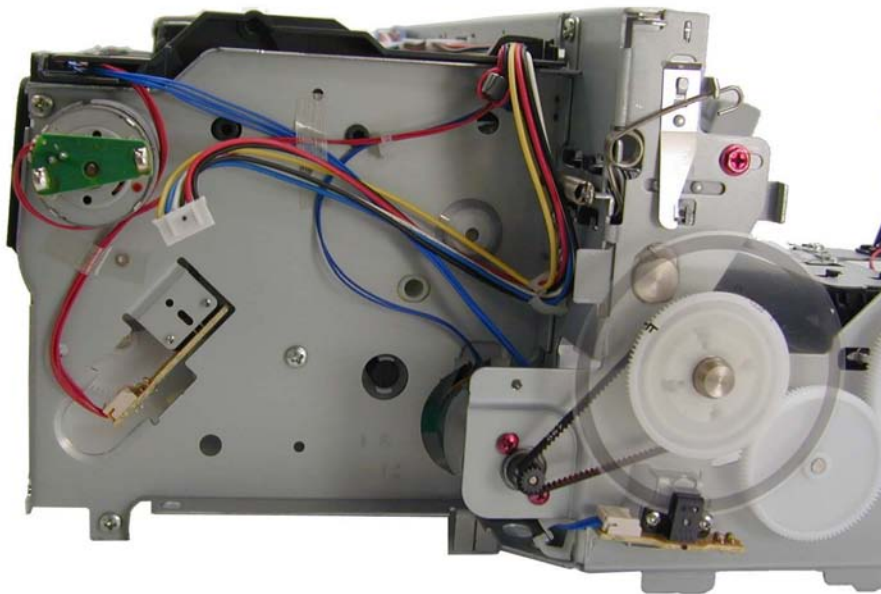


(I) Front cover right unit and logic board ass'y wiring





(II) Paper feed motor side wiring



[To the table of contents](#)

[To the top](#)

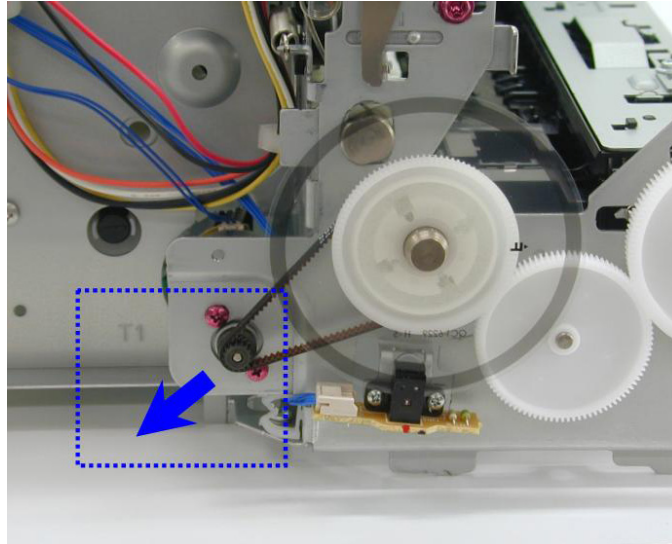
← <Part 1: 3. REPAIR, 3-2> →

3-3. Adjustment / Settings

(1) Paper feed motor adjustment

Perform the following adjustments when the paper feed motor unit is replaced:

- 1) When attaching the motor, fasten the screws so that the belt is properly stretched (in the direction indicated by the blue arrow in the figure below).
- 2) After replacement, be sure to perform the service test print, and confirm that no strange noise or faulty print operation (due to dislocation of the belt or gear, or out-of-phase motor, etc.) occurs.



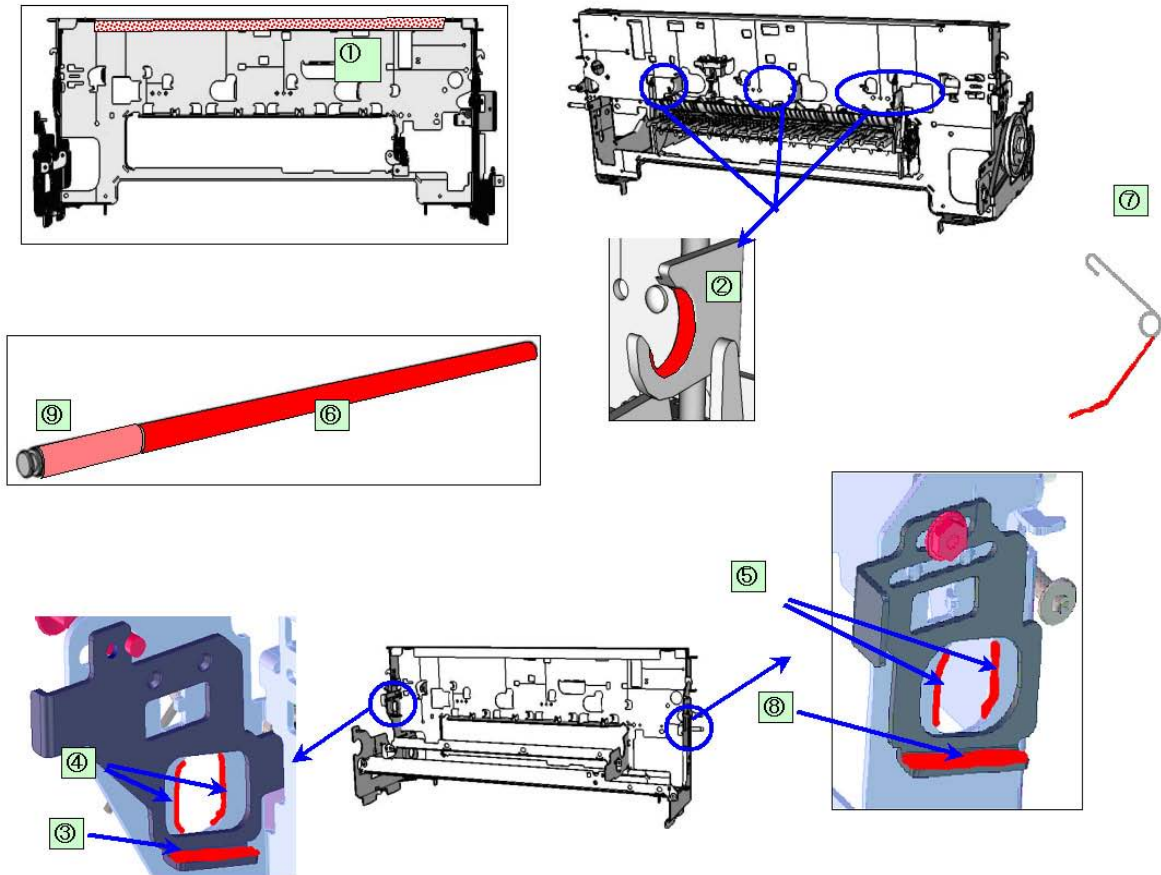
Note: The red screws securing the paper feed motor may be loosened only at replacement of the paper feed motor unit. DO NOT loosen them in other cases.

(2) Grease application

- 1) Printer unit

No	Part name		Where to apply grease / oil	Grease / oil name	Grease / oil amount	Number of drops*	Number of locations to apply grease / oil
1	Chassis ass'y	①	Entire surface the carriage slider contacts	Floil KG107A	27 to 54 mg	3	1
2	Chassis ass'y	②	PR lift shaft cam contact portion (at 3 locations)	Floil KG107A	9 to 18 mg	1	3
3	Adjust plate L	③	Carriage shaft cam L sliding portion	Floil KG107A	18 to 36 mg	2	1
4	Chassis ass'y	④	Carriage shaft sliding portion on the left side of the chassis (at 2 locations)	Floil KG107A	9 to 18 mg	1	2
5	Chassis ass'y	⑤	Carriage shaft sliding portion on the right side of the chassis (at 2 locations)	Floil KG107A	9 to 18 mg	1	2
6	Carriage shaft	⑥	Entire surface of the carriage shaft where the carriage unit slides	Floil KG107A	200 to 400 mg		1
7	Carriage shaft spring L	⑦	Carriage shaft sliding portion (to the end of the spring)	Floil KG107A	9 to 18 mg	1	1
8	Adjust plate R	⑧	Carriage shaft cam R sliding portion	Floil KG107A	18 to 36 mg	2	1
9	Carriage shaft	⑨	Carriage shaft surface where the carriage slides (and where machine-application of the grease is not feasible)	Floil KG107A	9 to 18 mg	1	1

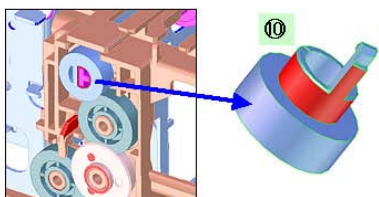
* 1 drop = 9 to 18 mg



2) CL input gear

No	Part name		Where to apply grease / oil	Grease / oil name	Grease / oil amount	Number of drops*	Number of locations to apply grease / oil
10	CL input gear	⑩	Joint of the CL gear base	Floil KG107A	9 to 18 mg	1	1

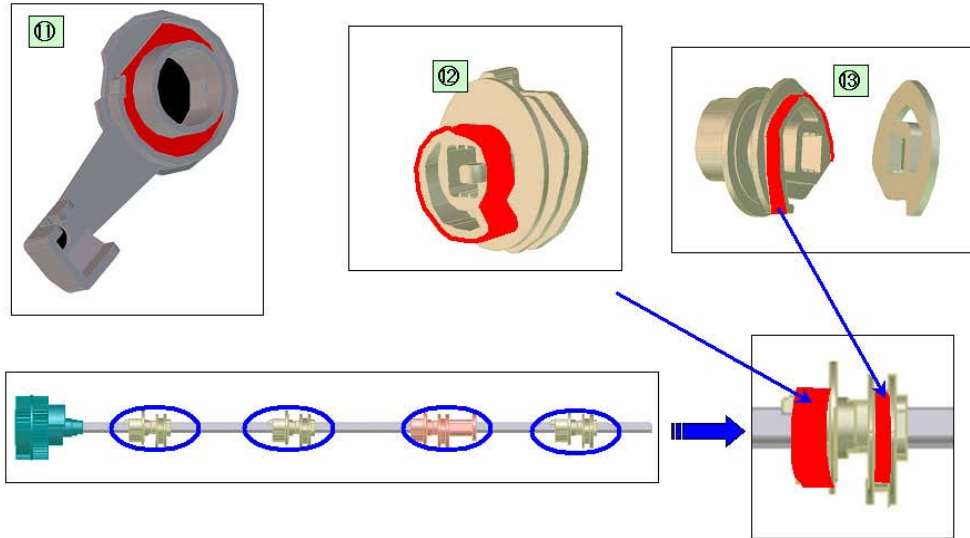
* 1 drop = 9 to 18 mg



3). PR shaft / LF roller bushing

No	Part name		Where to apply grease / oil	Grease / oil name	Grease / oil amount	Number of drops*	Number of locations to apply grease / oil+H18
11	LF roller ass'y	①	LF roller bushing L spring contact	Floil KG107A	4.5 to 9 mg	1/2	1
12	PR shaft ass'y	⑫	PR spring sliding portion (at 4 locations)	Floil KG107A	9 to 18 mg	1	4
13	PR shaft ass'y	⑬	PR holder contact (at 4 locations)	Floil KG107A	13.5 to 27 mg	1.5	4

* 1 drop = 9 to 18 mg



[To the table of contents](#)

[To the top](#)

← <Part 1: 3. REPAIR, 3-3 (1) to (2)> →