

Product: 1999 Canon LBP-800 Printer Service Repair Workshop Manual  
Full Download: <https://www.arepairmanual.com/downloads/1999-canon-lbp-800-printer-service-repair-workshop-manual/>

# LBP-800

## SERVICE MANUAL

REVISION 0

**Canon**

**AUG. 1999**

**RY8-13A0-000**

Sample of manual. Download All 178 pages at <https://www.arepairmanual.com/downloads/1999-canon-lbp-800-printer-service-repair-workshop-manual/>

Product: 1999 Canon LBP-800 Printer Service Repair Workshop Manual  
Full Download: <https://www.arepairmanual.com/downloads/1999-canon-lbp-800-printer-service-repair-workshop-manual/>

***COPYRIGHT © 1999 CANON INC***

***Printed in Japan  
Imprimé au Japon***

Use of this manual should be strictly supervised to avoid disclosure of confidential information.
---

Prepared by

PERIPHERAL PRODUCTS QUALITY PLANNING DIV.  
PERIPHERAL PRODUCTS TECHNICAL DOCUMENTATION DEPT.

CANON INC.

5-1, Hakusan 7-chome, Toride-City, Ibaraki-Pref. 302-8501, Japan

Sample of manual. Download All 178 pages at:  
<https://www.arepairmanual.com/downloads/1999-canon-lbp-800-printer-service-repair-workshop-manual/>

## **PREFACE**

This Service Manual contains basic information required for after-sales service of the laser beam printer LBP-800 (hereinafter referred to as the "printer"). This information is vital to the service technician in maintaining the high print quality and performance of the printer.

This manual consists of the following chapters:

- Chapter 1: Product information  
Features, specifications, operation, and installation
  
- Chapter 2: Operation and Timing  
A description of the operating principles and timing sequences of the electrical and mechanical systems.
  
- Chapter 3: The Mechanical System  
Explanation of mechanical operation, disassembly, reassembly and adjustment procedures
  
- Chapter 4: Troubleshooting  
Troubleshooting procedures, reference values and adjustments, maintenance and servicing, etc.
  
- Appendix: General timing chart, general circuit diagram, etc.

Information in this manual is subject to change as the product is improved or redesigned. All relevant information in such cases will be supplied in the Service Information Bulletins.

A thorough understanding of this printer, based on information in this Manual and Service Information bulletins, is required for maintaining its performance and for locating and repairing the causes of malfunctions.

### **DTP system**


This manual was produced on an Apple PowerMacintosh 9500/200 personal computer and output by an Apple LaserWriter 16/600 PS laser beam printer; final pages were printed on AGFA Selectset avantra 25.

All graphics were produced with Macromedia FreeHand (J), and all documents and page layouts were created with QuarkXPress (E).

The video images were captured with SONY digital video camcorder and Radius PhotoDV capture board system, and modified with Adobe Photoshop™ (J).

**CONTENTS**

**CHAPTER 1 PRODUCT INFORMATION**

I. FEATURES.....	1-1	A. Precautions.....	1-7
II. SPECIFICATIONS.....	1-2	B. Storage and Handling of EP-22 Cartridge .....	1-8
A. Printer.....	1-2	VI. MAINTENANCE, CHECKS BY THE CUSTOMER .....	1-10
III.  SAFETY INFORMATION.....	1-4	VII. OPERATION.....	1-11
A. Handling the Laser/Scanner Unit .....	1-4	A. Canon Advanced Printing Technology (CAPT).....	1-11
B. Toner Caution.....	1-4	B. Microsoft Windows NT4.0 ....	1-12
C. Ozone Safety .....	1-4	C. Microsoft Windows 95/98....	1-49
IV. PARTS OF THE PRINTER.....	1-5	D. Printing Environment Setting and Test Printing.....	1-61
A. External View .....	1-5		
B. Cross Section.....	1-6		
V. INSTALLATION .....	1-7		

**CHAPTER 2 OPERATION AND TIMING**

I. BASIC OPERATION .....	2-1	III. LASER/SCANNER SYSTEM .....	2-16
A. Functions .....	2-1	A. Outline .....	2-16
B. Basic Operation Sequence....	2-2	B. Laser Control Circuit .....	2-17
C. Power-ON Sequence .....	2-3	C. Scanner System.....	2-20
II. ENGINE CONTROL SYSTEM.....	2-4	IV. IMAGE FORMATION SYSTEM....	2-22
A. Engine Controller PCB .....	2-4	A. Outline .....	2-22
B. Fixing Control Circuit.....	2-8	B. Print Process .....	2-23
C. High-voltage Power Supply Circuit .....	2-10	V. PICK-UP/FEED SYSTEM .....	2-30
D. Low-voltage Power Supply Circuit .....	2-12	A. Outline .....	2-30
E. Video Interface .....	2-14	B. Jam Detection .....	2-32
		VI. VIDEO CONTROL SYSTEM.....	2-33
		A. Interface Controller PCB.....	2-33

**CHAPTER 3 THE MECHANICAL SYSTEM**

I. PREFACE.....	3-1	E. Fixing Film Unit .....	3-8
II. EXTERNALS .....	3-2	IV. MAIN PARTS.....	3-10
A. Locations.....	3-2	A. Locations.....	3-10
B. External Covers .....	3-2	B. Pick-up Roller.....	3-11
III. MAIN UNITS .....	3-5	C. Separation Pad .....	3-11
A. Laser/Scanner Unit.....	3-5	D. Transfer Charging Roller.....	3-13
B. Drive Unit.....	3-6	D. Pressure Roller .....	3-13
C. Feed Unit.....	3-7	V. SWITCHES/SENSORS/LEDS ....	3-15
D. Delivery Unit .....	3-8	A. Locations.....	3-15

B. Paper Top Sensor/ Paper-out Sensor .....	3-16	B. Main Motor .....	3-18
C. Power Switch/Test Print Switch/ Door Open Detection Switch/ Paper Delivery Sensor .....	3-16	C. Pick-up Solenoid .....	3-18
D. Display Unit LED .....	3-16	VII. PCBs.....	3-19
VI. MOTOR/SOLENOID .....	3-17	A. Locations.....	3-19
A. Locations.....	3-17	B. Interface Controller PCB.....	3-20
		C. Engine Controller PCB .....	3-21
		D. Display PCB .....	3-23

## **CHAPTER 4 TROUBLESHOOTING**


I. PREFACE.....	4-1	B. Electrical Adjustment .....	4-20
A. Malfunction Diagnosis		C. LEDs, Test Pins, Jumpers and Switches on PCBs.....	4-21
Flowchart .....	4-1	VIII. MAINTENANCE AND SERVICING .....	4-22
B. Initial Check.....	4-4	A. Periodic Replacement Parts.....	4-22
C. Test Print .....	4-5	B. Expected Servicing Lives of Consumable Parts .....	4-22
II. IMAGE DEFECTS TROUBLESHOOTING.....	4-6	C. Periodic Service.....	4-22
III. JAMS TROUBLESHOOTING.....	4-12	D. Cleaning During a Service Visit .....	4-23
IV. TRANSPORT TROUBLESHOOTING.....	4-15	E. Standard Tools.....	4-25
V. MALFUNCTION TROUBLESHOOTING.....	4-16	F. Special Tools .....	4-25
VI. MALFUNCTION STATUS TROUBLESHOOTING.....	4-17	G. List of Lubricants and Cleaners .....	4-26
VII. MEASUREMENT AND ADJUSTMENT.....	4-20	IX. LOCATION OF CONNECTORS....	4-27
A. Mechanical Adjustment .....	4-20		

## **APPENDIX**

I. GENERAL TIMING CHART .....	A-1	III. LIST OF SIGNALS .....	A-5
A. Timing Chart for Printing Two A4-size Sheet Continuously .....	A-1	A. Engine Controller .....	A-5
II. GENERAL CIRCUIT DIAGRAM... A-3		IV. MESSAGES TABLE.....	A-7
A. Engine Controller PCB .....	A-3	A. Message List .....	A-7
B. Interface Controller PCB.....	A-4		

# **CHAPTER 1**

## **PRODUCT INFORMATION**

<b>I. FEATURES.....</b>	<b>1-1</b>	<b>V. INSTALLATION .....</b>	<b>1-7</b>
<b>II. SPECIFICATIONS.....</b>	<b>1-2</b>	<b>VI. MAINTENANCE, CHECKS</b>	
<b>III.  SAFETY INFORMATION.....</b>	<b>1-4</b>	<b>    BY THE CUSTOMER .....</b>	<b>1-10</b>
<b>IV. PARTS OF THE PRINTER.....</b>	<b>1-5</b>	<b>VII. OPERATION.....</b>	<b>1-11</b>



## I. FEATURES

### **1. Small-sized Printer with High Speed and High Resolution**

This printer has paper pick-up trays on its top for space saving, and is compact enough to set on the desk side. In addition, it has realized high speed of 8 pages per minute (A4) and high resolution of 600 DPI.

### **2. Employment of Canon Advanced Printing Technology**

With Canon Advanced Printing Technology in which data are processed within a host computer, this printer needs no PDL converting/image processing. As a result, it has increased its speed performance and reduced the cost.

### **3. Shortened Wait Time & Low Power Consumption**

By adopting an on-demand fixing method that enables driving the heater only during printing, this printer has shortened the wait time and reduced the consumption power during standby.

### **4. Low Noise**

In addition to an on-demand fixing method, this printer has increased its heat exhaust efficiency so as to remove the fan for realizing a low noise level.

### **5. Direct Connection to the Network**

This printer enables the user to connect directly to the printer by utilizing a specified network adapter.

## II. SPECIFICATIONS

### A. Printer

#### 1. Printer Engine

- |  |   |
|--|---|
| 1) Type                                | Desktop page printer  |
| 2) Printing method                     | Electrophotography  |
| 3) Printing speed <b>(Note1)</b>       | 8 pages/minute (A4)   |
| 4) First print time <b>(Note2)</b>     |   |
| •Face-down                             | 18 seconds or less  |
| •Face-up                               | 17 seconds or less  |
| 5) Wait time <b>(Note3)</b>            | 8 seconds or less   |
| 6) Resolution                          |   |
| •Horizontal                            | 600 dots/inch   |
| •Vertical                              | 600 raster lines/inch   |
| 7) Image formation system              |   |
| •Laser                                 | Semiconductor laser   |
| •Scanning system                       | Rotating four-faced prism mirror  |
| •Photosensitive drum                   | OPC   |
| •Charging                              | Roller charging   |
| •Exposure                              | Laser scanning  |
| •Toner                                 | Magnetic single-component dry toner   |
| •Development                           | Toner projection development system   |
| •Toner supply                          | Replaceable EP-22 toner cartridge (able to print approx. 2,500 A4-sized print sheets: with image density set in the middle, and 4 % dot density ratio)              |
| •Image transfer                        | Roller transfer   |
| •Separation                            | Curvature separation  |
| •Cleaning                              | Blade   |
| •Fixing method                         | On-demand fixing  |
| 8) Feeding                             | Manual feed slot<br>Multi-purpose tray  |
| Paper types                            | Plain paper, recycled paper, colored paper, labels, OHT, index cards, postcards and envelopes   |
| Paper size                             |   |
| •Manual feed slot                      | 76.2 mm(W) x 127 mm(L) ~ 216 mm(W) x 356 mm(L) sized paper (64 g/m <sup>2</sup> to 135 g/m <sup>2</sup> Canon recommended paper) and above mentioned paper          |
| •Multi-purpose tray                    | 76.2 mm(W) x 127 mm(L) ~ 216 mm(W) x 356 mm(L) sized paper (64 g/m <sup>2</sup> to 135 g/m <sup>2</sup> Canon recommended paper) and above mentioned paper          |
| Capacity                               |   |
| •Manual feed slot                      | one sheet   |
| •Multi-purpose                         | Depth 12.5 mm (Approx. 125 sheets of 75 g/m <sup>2</sup> paper)   |
| 9) Delivery <b>(Note4)</b>             | Face-down/face-up   |
| •Face-down tray capacity               | Approx. 100 sheets of 75 g/m <sup>2</sup> paper   |
| 10) Duplex printing                    |   |
| •Manual duplex printing <b>(Note5)</b> | The paper is picked up from the multi-purpose tray and delivered face-up. Only plain paper (64-135 g/m <sup>2</sup> Canon recommended paper) can be printed duplex. |
| 11) Operating environment              |   |
| Temperature                            | 10 ~ 32.5 °C  |
| Humidity                               | 20 ~ 80 % RH  |

Air pressure	613 ~ 1013 hPa (460 ~ 760 mmHg)	
12) Power consumption	Approx. 770 W or less (Room temperature 20 °C, with rated line voltage on)	
13) Noise level (Officially announced noise emission level in accordance with ISO 9296)		
	Sound power level (1B = 10 dB)	6.2 B or less (printing) Dark sound level (standby)
	Sound pressure level (Bystander position)	42 dB or less (printing) Dark sound level (standby)
14) Dimensions	345(W) x 312 mm(D) x 267 mm(H)	
15) Weight	Approx. 6.35 Kg (printer only), Approx. 0.73 Kg (cartridge)	
16) Power supply	100-127V ±10% (50/60 Hz ±2 Hz) 220-240V +6%-10% (50 Hz ±2 Hz)	

- 
- Notes:**
1. A test print when the room temperature is 20 °C and the rated power voltage is input.
  2. The time taken from that the Print signal is received from the video controller until that an A-4 sized paper is delivered completely, and also when the printer is in the Ready mode at room temperatures of 20 °C.
  3. The time taken from that the power plug is plugged in until that the printer becomes ready to print (Ready or Standby mode.)
  4. Only plain paper and recycled paper can be delivered face-down.
  5. To print duplex manually, uncurl the face-up delivered paper and set it in the multi-purpose tray.
- 

## 2. Interface controller

1) Printing System	Canon Advanced Printing Technology
2) ROM capacity	8 KB
3) RAM capacity	512 KB
4) Interface	Bi-directional 8 bit parallel interface (Centronics specifications)

Specifications are subject to change with product improvement.
--

### III. SAFETY INFORMATION

#### A. Handling the Laser/Scanner Unit

An invisible laser beam is emitted within the laser/scanner unit.

The laser beam can cause eye damage if exposed, so be sure not to disassemble the laser/scanner unit. It is not necessary to adjust the laser/scanner unit in this printer in the field.

The following label is attached to the laser/scanner cover.

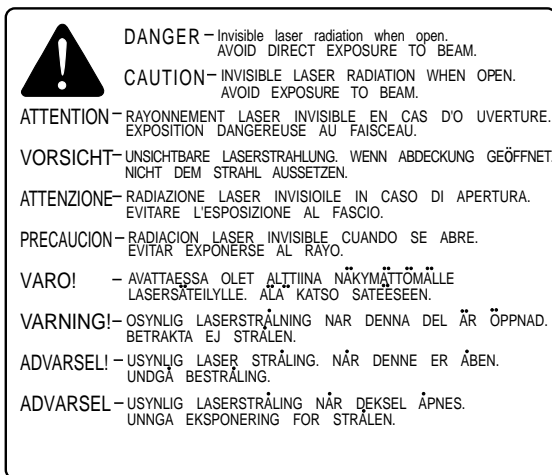


Figure 1-3-1

#### B. Toner Caution

The toner is non-toxic substance composed of plastics and minute color pigments.

If toner adheres to the skin or clothing, remove as much as possible with dry tissue first, then wash with cold water, Hot water should not be used with which the toner will solidify and become difficult to remove.

Toner will easily decompose vinyl materials, therefore avoid the toner to come close to vinyl.

#### C. Ozone Safety

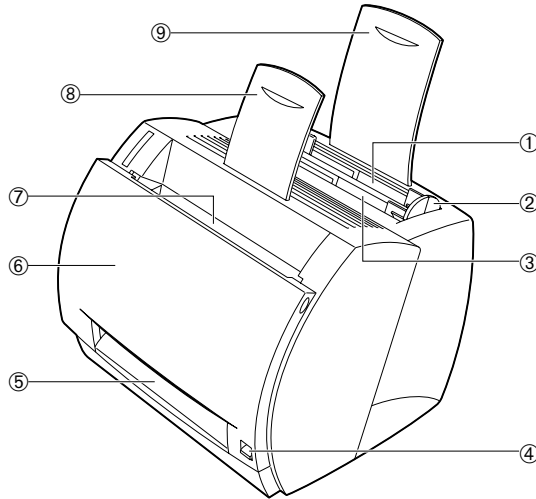
An infinitesimal amount of ozone gas (O<sub>3</sub>) is generated during corona discharge from the charging roller. The ozone gas is emitted only while the printer is operating.

This printer meets the ozone emission reference value set by Underwriters Laboratory (UL) at the time it is shipped from the factory.

**IV. PARTS OF THE PRINTER**

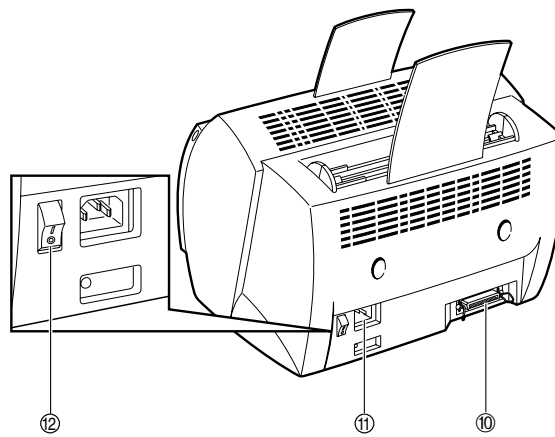
**A. External View**

**1. External view of this printer**



- |                            |                             |
|----------------------------|-----------------------------|
| 1: Multi-purpose tray      | 2: Paper width guide        |
| 3: Manual feed slot        | 4: Delivery switching lever |
| 5: Face-up delivery port   | 6: Cartridge cover unit     |
| 7: Face-down delivery tray | 8: Delivery sub-tray        |
| 9: Paper pick-up sub-tray  |                             |

**Figure 1-4-1**

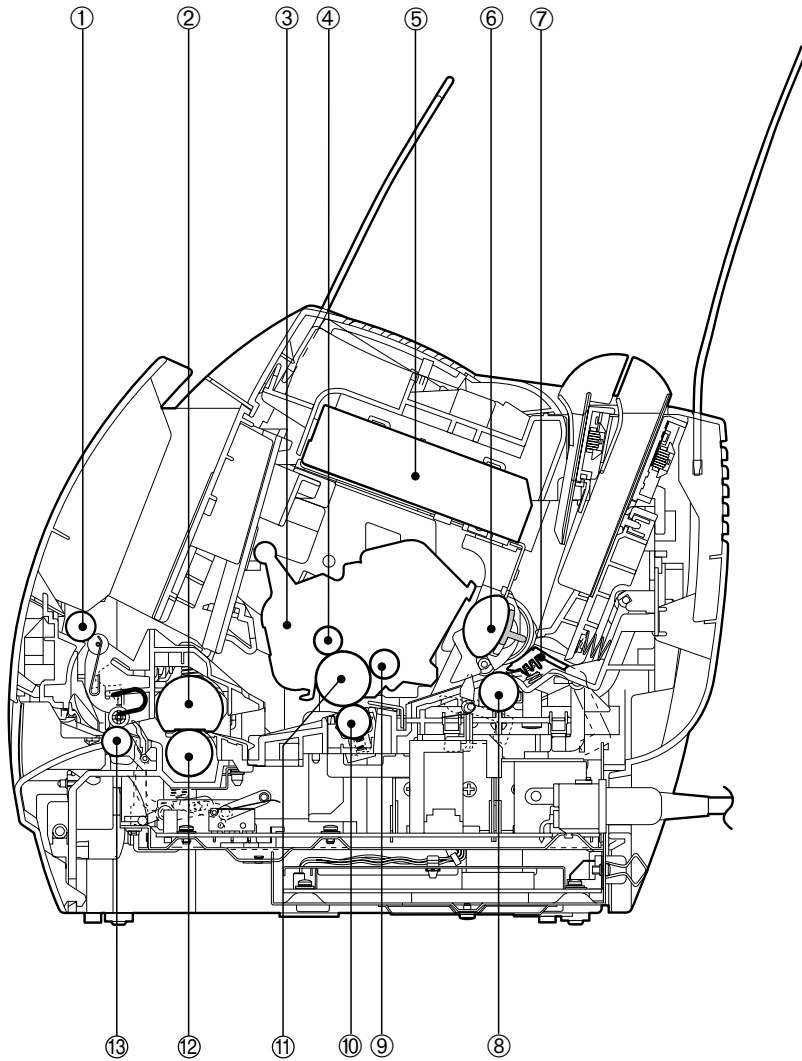


- |                         |                      |
|-------------------------|----------------------|
| 10: Interface connector | 11: Power receptacle |
| 12: Power switch        |                      |

**Figure 1-4-2**

**B. Cross Section**

**1. Cross section of this printer**



- 1: Face-down delivery roller
- 3: EP-22 cartridge
- 5: Laser/scanner unit
- 7: Separation pad
- 9: Developing cylinder
- 11: Photosensitive drum
- 13: Fixing delivery roller

- 2: Fixing film unit
- 4: Primary charging roller
- 6: Pick-up roller
- 8: Feed roller
- 10: Transfer charging roller
- 12: Pressure roller

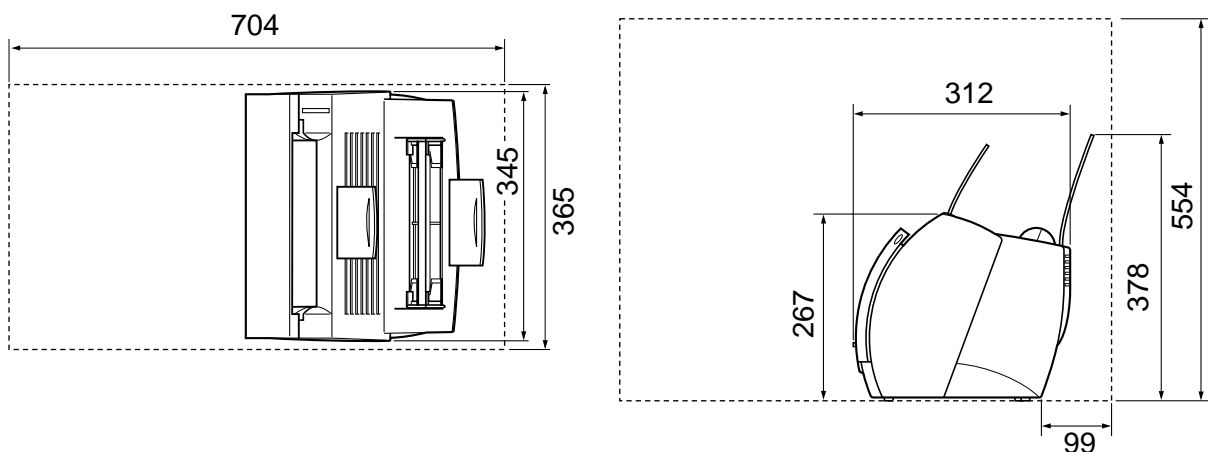
**Figure 1-4-3**

## V. INSTALLATION

### A. Precautions

- 1) This product has been carefully adjusted and strictly inspected before packing and shipping. To make the operation as intended, it is important to install it correctly. Service engineers must understand the performance of the printer sufficiently, install it in the appropriate environment with proper procedures, and operate the necessary checks.
- 2) Before taking the printer to the customer's premises, the following conditions at the installation location should be confirmed:
  - Power must be directly connectable to a single socket with a supply voltage within  $\pm 10\%$  of the rated voltage (100-127V) or  $+6\%$  to  $-10\%$  of the rated voltage (220-240V.)
  - The temperatures should be in a range from 10 to 32.5 °C and the relative humidity from 20 to 80 %. Avoid areas closed to water faucets, boilers, humidifiers, or refrigerators.
  - Avoid areas near open flames, dusty locations, windy locations, areas which emit ammonia gas, and areas directly exposed to sunlight. When exposure to direct sunlight is unavoidable, hanging curtains is recommended.
  - The room should be well ventilated.
  - The printer should be placed on a level surface.
  - If the printer is set up on a desk, be sure a study desk is used.
  - Set the printer at a suitable distance from the wall for easy operation (See Figure 1-5-1.) There must be enough space around the printer to operate.

Following dimensions should be taken into consideration to select a installation space for the printer.



**Figure 1-5-1**

- 3) When metals are moved from a cold area to warm area, condensation may appear. This can lead to various troubles during an operation. When the printer needs to be moved from a cold area to warm area, leave it packed in its box for at least an hour to acclimatize to room temperature.

**B. Storage and Handling of EP-22 Cartridge**

As time passes, the natural environment will change the cartridge, whether sealed or installed in the printer, or regardless of the number of prints. The progression of this natural change depends largely on the storage and installation environment, therefore, take special care on storage and handling the cartridge.

**a. Storage of Sealed EP-22 Cartridge Package**

When storing EP-22 cartridge in warehouses or workshops, be sure that they are kept within humidity/storage conditions range shown in Table 1-5-1.

Also note the following:

- 1) Avoid areas exposed to direct sunlight.
- 2) Do not place them in locations which are subject to severe vibration.
- 3) Do not bump or drop the cartridge.
- 4) Avoid high temperature environment, keep EP-22 cartridge below 35 °C.

**Table 1-5-1**

Temperature	Normal (total storage time ~ 9/10)		0 to 35°C
	Severe (total storage time x-1/10)	High	35 to 40°C
		Low	-20 to 0°C
Temperature change (within 3 minutes or so)			40°C→15°C -20°C→25°C
Relative humidity	Normal (total storage time ~ 9/10)		35 to 85% RH
	Severe (total storage time x-1/10)	High	85 to 95% RH
		Low	10 to 35% RH
Air pressure			613 to 1013hPa (460 to 760 mmHg)

**Note:** Total storage time is the valid time span following the manufacture date displayed on the cartridge box.

**b. Storage of Unsealed EP-22 Cartridge**

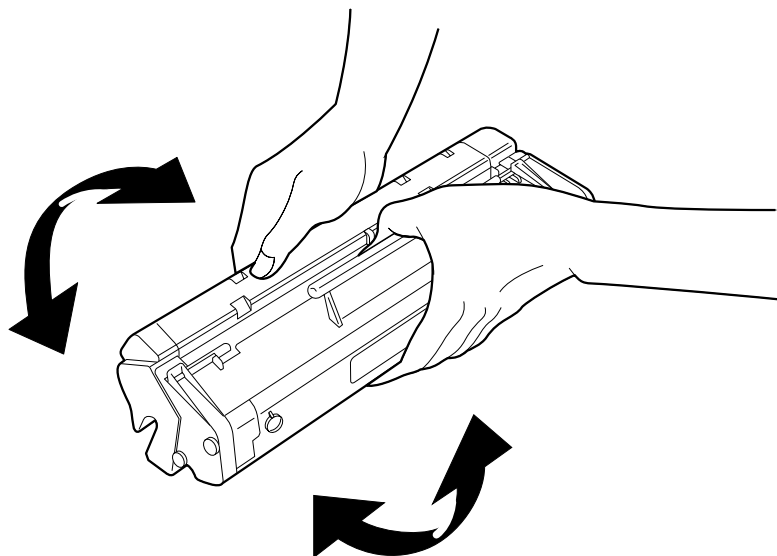
Since an organic photoconductor (OPC) is used for the photosensitive drum, intensive light will damage the drum. It is necessary to thoroughly explain to customers the various storage and handling procedures of unsealed cartridges.

Note the following:

- 1) Avoid areas which are exposed to direct sunlight such as near windows. Avoid leaving the packages in cars for an extended period of time as high temperatures can damage them.
- 2) Avoid high temperature and high humidity, and low temperature and low humidity environment. Avoid areas where the temperature or humidity drastically change such as a location near air conditioners.
- 3) Avoid dusty areas or locations which emit ammonia or organic solvent gases.
- 4) Keep EP-22 cartridge below 35 °C
- 5) Avoid placing the package near CRT displays, disk drive units, or floppy disks.

**c. Notes on Handling of Cartridge**

- 1) Before installing a new EP-22 cartridge in the printer, hold the cartridge at both sides as shown below, and gently slop it at about 45° right-up and left-up 5 or 6 times to distribute toner evenly. Do not rock the cartridge in any other way, as the toner may leak from the developing or cleaner units.

**Figure 1-5-2**

Print the test pattern of 3 to 5 sheets to ensure that output images are not spoiled by a toner leak after installing the cartridge in the printer.

- 2) If blank spots appear on the output image due to an uneven distribution of toner in the cartridge, shake the cartridge to evenly distribute as shown in 1).
- 3) Do not place the cartridge on its end or upside down.
- 4) Do not open the protective shutter of the photosensitive drum and never touch the drum surface. Do not clean the photosensitive drum.
- 5) Do not disassemble EP-22 cartridge.
- 6) Do not give vibration or shock to the cartridge.
- 7) As the photosensitive light is easily damaged by intensive light, blank spots or black stripes may appear on the printed image, if it is exposed to strong light. Faulty print images can be corrected by stopping the printer momentarily. However, if the drum is exposed too long, the blank spots and black stripes may remain even after stopping the printer.  
To prevent this, be sure to always place the unsealed cartridges in their boxes or under a cover.  
Do not leave them uncovered when removed from the printer.

**Reference:** If the cartridge are exposed to ordinary light for five minutes and then left in a dark area for another five minutes, the print quality will return to a virtually permissible level. However, do not expose the cartridge to direct sunlight.

**VI. MAINTENANCE, CHECKS BY THE CUSTOMER**

Maintenance points that should be performed by the customer to maintain the printer at optimum level are listed below.

**Table 1-6-1**

Item	Customer maintenance
Cartridge	Shake or replace the cartridge as necessary.
External Cover	Clean the external cover as necessary.

## VII. OPERATION

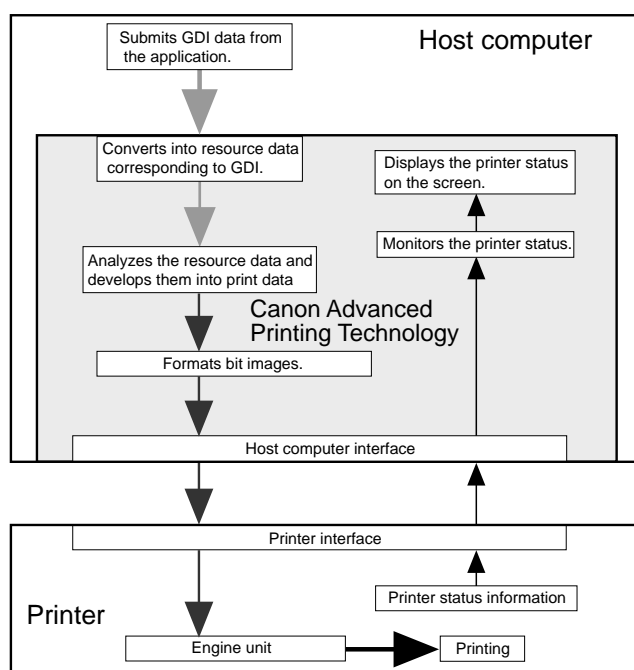
### A. Canon Advanced Printing Technology (CAPT)

#### 1. Concerning Canon Advanced Printing Technology (CAPT)

Canon Advanced Printing Technology (hereafter referred to as CAPT) reduces the processing time, and simplifies operations for printing in the Microsoft Windows environment.

CAPT performs the following procedures to enable easy and speedy printing.

- Instead of converting application print data into the printer's page description language (PDL), this software translates print data into resource data corresponding to the writing system commands (GDI data.)
- The resource data corresponding to the GDI data are developed into dot data, and then passed to a host computer.
- The printing environment can be set in the dialog box on the host computer screen.
- The printer status is shown on the host computer screen, which enables the user to confirm the printing completion time, feeding status of the print paper, error conditions, and etc. on the host computer screen.



**Figure 1-7-1**

**Note:** GDI : Graphics device interface

Graphic writing system to perform printing and screen display in the Windows environment, (and a graphic writing system interface for the application.)

CAPT is used by installing on Microsoft Windows NT4.0 or Microsoft Windows 95/98. The installation is done using the Canon Advanced Printing Technology disk included with this printer.

CAPT specifies the paper size, document size, number of copies and print quality on the computer screen. The operation methods of the dialog boxes vary in Microsoft Windows NT4.0 and Microsoft Windows 95/98.

The installation procedures and operations are explained on the following pages. (Microsoft Windows NT4.0: Page 1-12, Microsoft Windows 95/98: Page 1-49)

### **B. Microsoft Windows NT4.0**

#### **1. Installation of CAPT**

A Canon Advanced Printing Technology installation disk is packed with this printer.

The types and contents are as follows:

**Types:**

- A 5-inch CD-ROM disk

**Contents:**

- CAPT driver
- Language monitor
- Status window
- Parallel port driver
- Installer
- CD-ROM menu
- Uninstaller
- Trouble shooter
- On-line help
- On-line manual
- Voice message

#### **a. Operating Environment**

The following environment is required to install CAPT.

● PC hardware

This printer supports an IBM-PC or its compatible machine. The operating conditions are as shown below.

<Minimum Operating Environment>

- CPU: Pentium or above
- RAM: 32 MB or above
- Available memory on the disk: 10 MB or above
- Printer port: Standard Centronics parallel port
- CD-ROM drive
- Sound: PCM sound module is required to use the Voice message.
- Monitor size: 640 x 480 or above, 16 colors or above
- Network: 10 Base-T or 100 Base-TX is required to use network adapter.

<Recommended Operating Environment>

- CPU: MMX Pentium 200 MHz or above
- RAM: 48 MB or above

● OS software

This printer operates only on Microsoft Windows x86 (Intel). It does not operate on Alpha, MIPS or PPC.

This printer does not operate on other OSs such as Windows NT3.x, Windows 3.x, Windows for Workgroups, Windows CE, or Windows on OS/2. In general, Windows language and the software language of this printer must match.

● Printer cable

- Use a bi-directional 8-bit parallel interface cable for IBM-PC.
- Connections through the printer selector and printer buffer are not supported.

**b. Installation Procedures**

## ● Connecting the printer as a local printer

This section describes how to install CAPT for using the printer as a local printer. Install it to the host computer by following the procedures below.

For details, see the User's Manual packed with the printer.

1. Switch on the computer to which the printer is connected and start up Microsoft Windows NT.
2. Log in as an Administrator.
3. Use one of the following methods to start up the Add Printer Wizard.
  - Start button / Settings / Printers / Printers folder / Open the Add Printer.
  - My Computer / Printers folder / Open the Add Printer.
  - Explorer / Desktop / My Computer / Printers / Open the Add Printer.
4. Add Printer Wizard (Initial screen)

Select either to use this printer, as a local printer or network printer. The following procedures describe the installation for using the printer as a local printer by selecting the My Computer. For using the printer as a network printer, see Page 1-14 for details.
5. Add Printer Wizard (Port selection)

Select the port to which the printer is connected. If the port is not available, click the Add Port button to create a new port.

If the check box for Enable printer pooling is selected, you can select multiple ports in the Available ports list box simultaneously.
6. Add Printer Wizard (Printer selection 1)

Insert the CD-ROM into the computer, click the Have Disk button to open the Install From Disk dialog box.

Enter the name of the CD-ROM drive in the Copy manufacture's files from text box, and then click the Browse button.
7. Add Printer Wizard (Printer selection 2)

If the name of the printer appears in the Printers list box, and the printer you are installing is selected, click the Next button. If you want to change the printer, click the Have Disk button to reselect the INF file.
8. Add Printer (Overwrite selection)

This windows appears only when the same driver has already been installed.

Select whether or not the existing driver is to be overwritten by the newly installed driver.
9. Add Printer Wizard (Printer name change)

Enter the printer name to the Printer Name text box. Select whether or not the printer is to be a default printer.
10. Add Printer Wizard (Sharing/non-sharing selection)

Select whether or not the PC is to be designated as the print server and the printer is to be shared by other client PCs on a network. You can also specifies the printer sharing settings after installing CAPT.
11. Add Printer Wizard (Test page printing selection)

Select whether or not to print a test page after you have finished installing CAPT.
12. Coping Files  
The Coping Files dialog box appears when the installation has been started.
13. End of Installation  
When the installation has completed, restart Microsoft Windows as instructed by the on-screen message. When the printer is connected, you will be asked whether you want to print a test page. Print a test page to confirm that the installation has been made properly.

### ● Connecting to a network printer

Follow the procedures described in this section to perform the installation on a client PC when you want to designate the PC to which the printer is connected as a network print server and to use the printer as a network printer.

For details, refer to the User's Manual packed with the printer.

---

**Note:** Precondition for sharing the installation

- CAPT should be installed properly in the print server to which the client PC is to be connected, and the printer should be designated as a shared printer. See Page 1-24 for information on how to designate the printer as a share server.
  - The client must be able to access to the server and the shared printer.
  - As the client need no access privilegdes, which is required for the groups in the local installaion, the print server is accessible to anyone as a network client, It can, however, restrict the groups able to access to the print server by setting the Security on the print server.
- 

1. Switch on the client server PC, start up Microsoft Windows NT and log in.
2. Use one of the following methods to start up the Add Printer Wizard.
  - Start button / Settings / Printers / Printers folder / Open the Add Printer.
  - My Computer / Printers folder / Open the Add Printer.
  - Explorer / Desktop / My Computer / Printers / Open the Add Printer.
3. Add Printer Wizard (Initial screen)

Select either to use this printer, as a local printer or network printer. The following procedures describe the installation for using the printer as a network printer by selecting the Network printer server. For using the printer as a local printer, see Page 1-13 for details.
4. Connect to Printer

Double-click on the print server name shown in the Shared printers list box, and click on the OK button to connect to the selected network printer.

If the connection could not be made, the Connected to Printer (printer connecting failure) dialog box will be indicated.
5. Add Printer Wizard (Installation completion)

This window tells you that the network printer has been successfully installed, click on the Finish button to finish the Add Printer Wizard.

## 2. Operation of CAPT

CAPT uses Properties dialog boxes to set print environment.

The table on Page 1-61 shows the list of print environment that can be set by the CAPT dialog boxes.

The main dialog boxes of CAPT are described below.

### a. Printer Properties

- How to open the Printer Properties.

The Printer Properties can be opened by the following methods.

#### **From the Microsoft Windows desktop**

1) Use one of the following methods to open the Printers folder.

- Start Button / Settings / Printers
- My Computer / Printers
- Control Panel / Printers

2) Open the printer to which you want to connect from the Printers folder.

- Click the right mouse button on the Canon LBP-800 icon to select the Properties.
- Double-click on the Canon LBP-800 icon to open the Canon LBP-800 print queue window, and select the Properties from the Printer menu.

#### **From the Microsoft Windows applications**

How to open the Printer Properties varies in each application. See the application manual.

#### **From the Microsoft Windows Shortcut**

- To create a shortcut, open the Printers folder, drag the Canon LBP-800 icon with the right mouse button to the desktop, and select the Create Shortcut(s) Here. (See the Microsoft Windows NT User's Guide for details.) Double-click on the shortcut icon to open the printer window and select the Properties from the Printer menu.
- To create a shortcut to the Printer folder, open the My computer, drag the Printer's icon with the right mouse button to the desktop, and select the Create Shortcut(s) Here. (See the Microsoft Windows NT User's Guide for details.) Double-click on the shortcut icon to open the Printers folder, click right mouse button on the Canon LBP-800, and select the Properties.

The Printer Properties contains 6 tabs common to all Microsoft Windows NT printers according to the Microsoft Windows User Interface model. You can click on each tab or move the focus and then press right or left cursor to open the tab and make settings.

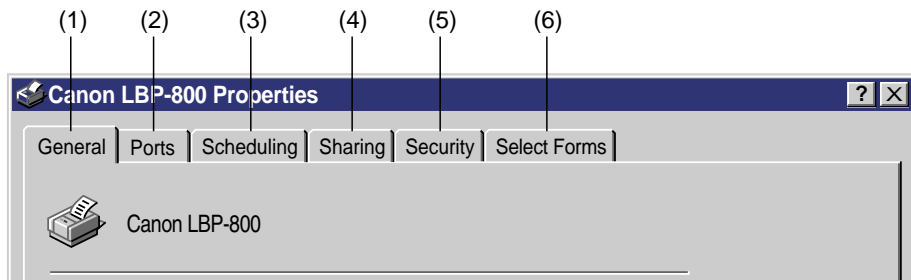


Figure 1-7-2

- (1) **General** : Makes settings relating to the entire printer driver.
- (2) **Ports** : Selects the port to which the printer is connected.
- (3) **Scheduling** : Makes settings relating to print schedule.
- (4) **Sharing** : Designates whether the printer is shared.
- (5) **Security** : Sets the security for the printer.
- (6) **Select Forms** : Makes settings for user defined paper.

To store the items set in each tab, click the OK button and close the Print Properties dialog box. To close the box without storing the items set in each tab, click the Cancel button.

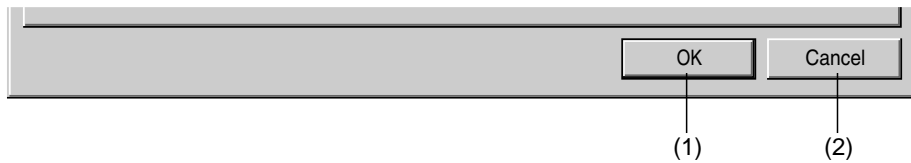


Figure 1-7-3

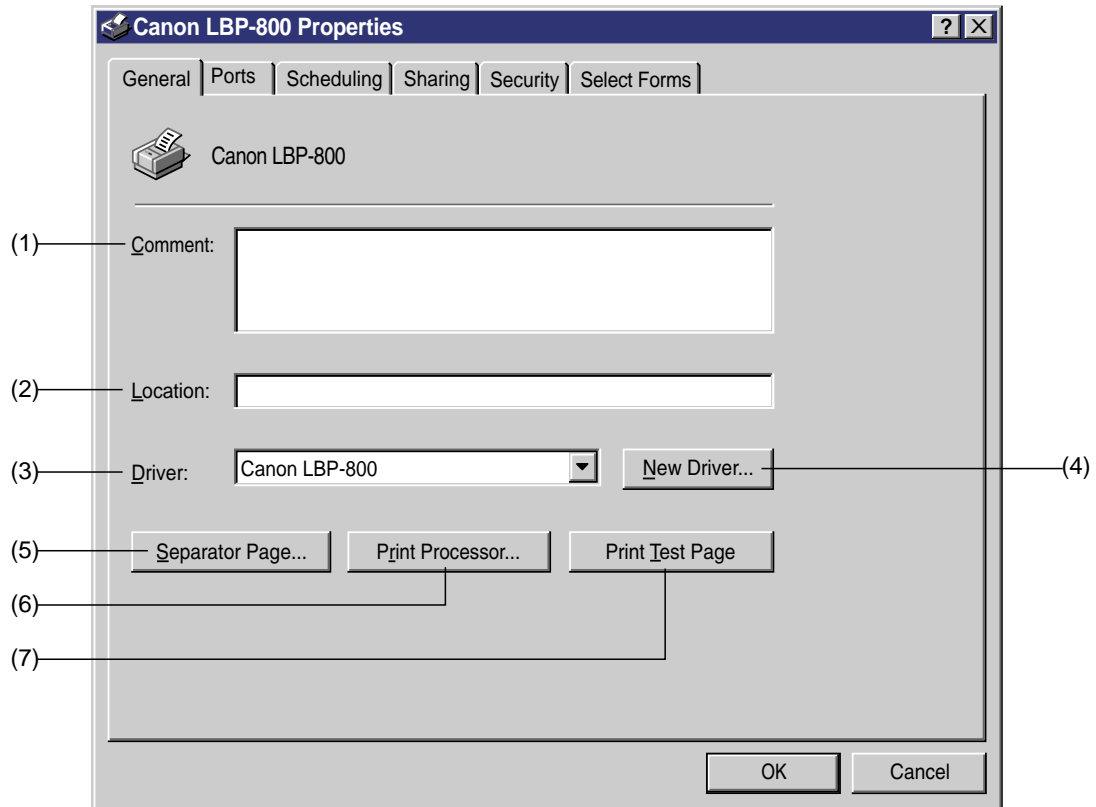
- (1) **OK** : Changes the items in this dialog box and closes the box.
- (2) **Cancel** : Closes this dialog box without changing its items.

Details of each tab are described below.

## ● General Tab

The settings in this tab apply to the entire printer driver. This tab can be opened by clicking the General tab in the Properties dialog box.

The General tab is shown in Figure 1-7-4.



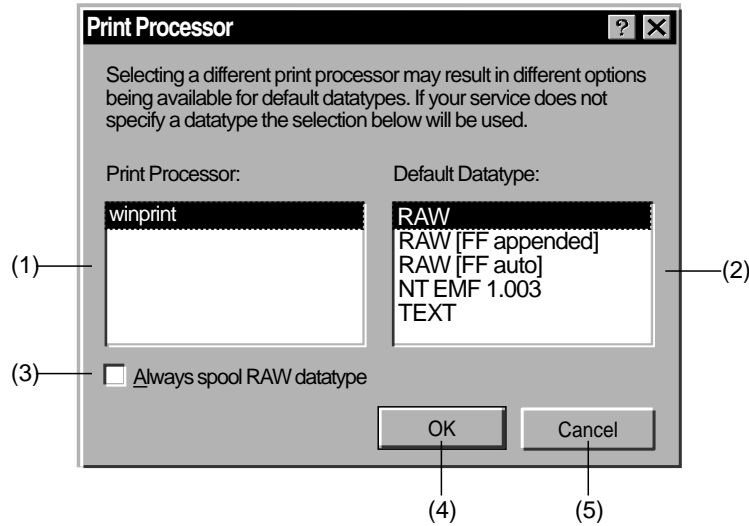
**Figure 1-7-4**

- (1) **Comment** : Enter comments on the printer.
- (2) **Location** : Enter information on the printer location.
- (3) **Driver** : Displays the list of the installed printer drivers.
- (4) **New Driver** : Click on this button when installing a new or updated printer driver.
- (5) **Separator Page** : As this printer does not support separator pages, clicking on this button will not print a separator page.
- (6) **Print Processor** : Displays the Print Processor dialog box.
- (7) **Print Test Page** : Print a test page supported by the Microsoft Windows NT standard.

◆ **Print Processor Dialog Box**

In the Print Processor dialog box, you can specify the print processor and spool data type used for this printer. The Printer Processor dialog box can be opened by clicking on the Print Processor button in the General tab in the Properties dialog box.

The Print Processor dialog box is shown in Figure 1-7-5.



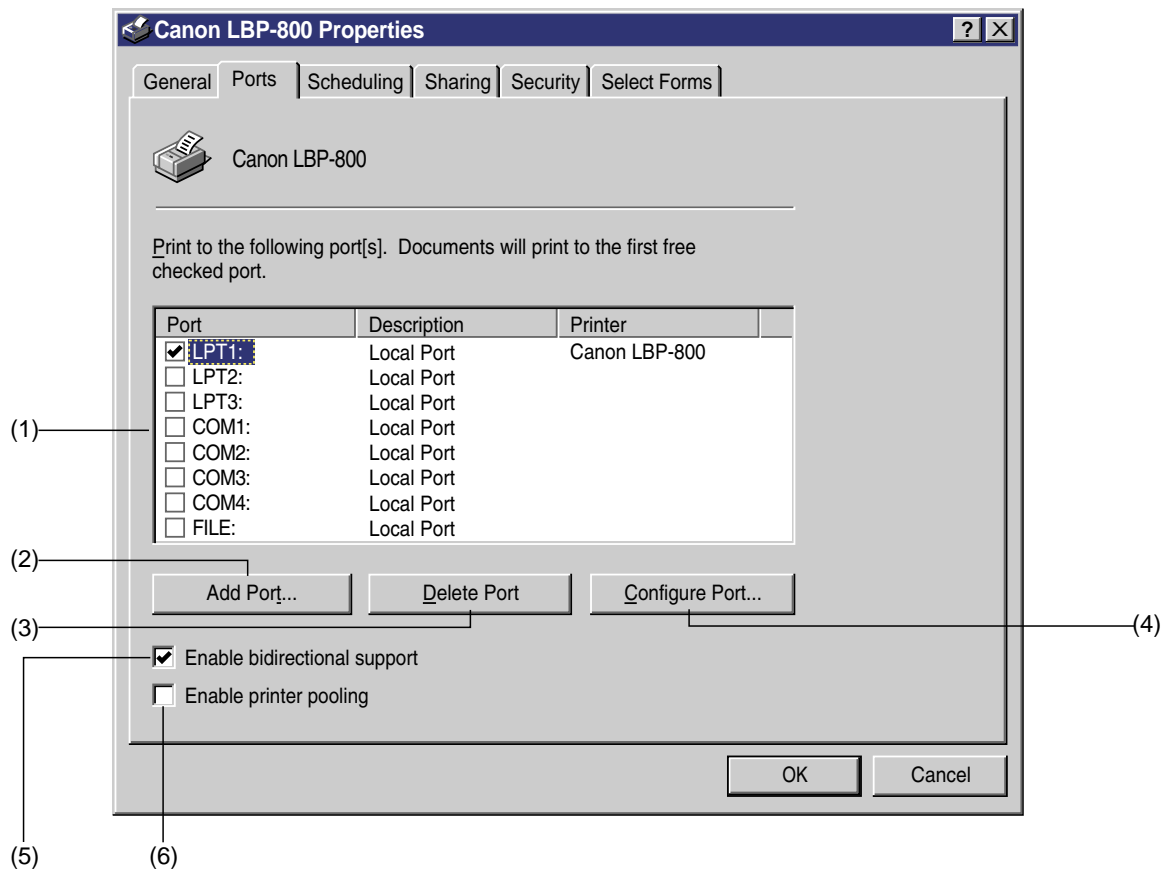
**Figure 1-7-5**

- (1) **Print Processor** : Specifies the print processor used for this printer. Normally, Winprint (Windows standard print processor) is available.
- (2) **Default Datatype** : Displays the list of spool datatype available for the selected print processor in the Print Processor list box.
- (3) **Always spool RAW datatype** : Select the check box when you want to always spool data as RAW datatype.
- (4) **OK** : Changes the items in this dialog box and closes the box.
- (5) **Cancel** : Closes this box without changing its items.

### ● Ports Tab

Use this tab to select the port to which the printer is connected. It can be opened by clicking the Ports tab in the Properties dialog box.

The ports tab is shown in Figure 1-7-6.



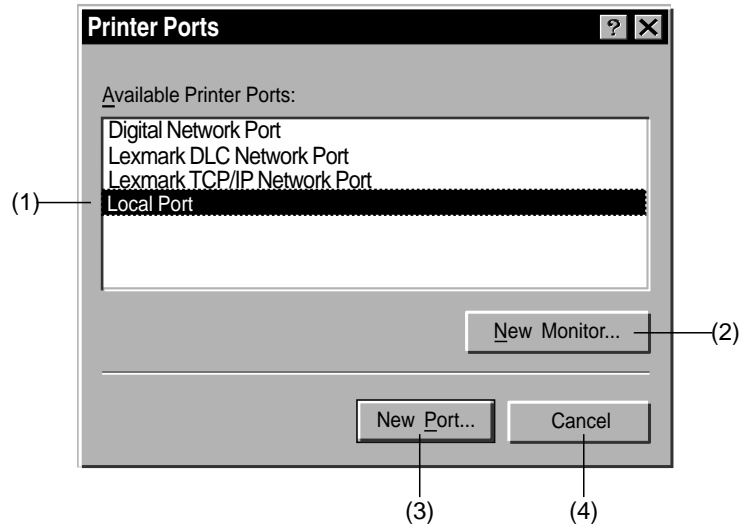
**Figure 1-7-6**

- (1) **Print to the following port(s)** : List of check boxes for the ports to which the printer can be connected. Select one or more port(s) to which the printer is to be connected. The error dialog box will appear if a nonexistent LPT port has been selected and a print is commanded.
- (2) **Add Ports** : Opens the Printer Ports dialog box which enables you to add ports. (See Page 1-20)
- (3) **Delete Ports** : Opens the Delete Port dialog box which enables you to delete selected ports.
- (4) **Configure Ports** : Opens the configure LPT Port dialog box which enables you to set ports.
- (5) **Enable bidirectional support** : Selects whether or not the Language Monitor is used for bidirectional communication between the PC and printer.
- (6) **Enable printer pooling** : Selects whether or not the printer pool is used. Select the check box when you want to select multiple ports in the Print to the following ports list box. The printer does not support printer pool.

◆ **Printer Ports Dialog Box**

Use this dialog box to add ports to which the printer is to be connected if necessary. It can be opened by clicking the Add Ports button in the Ports tab of the Properties dialog box.

The printer Ports dialog box is shown in Figure 1-7-7.



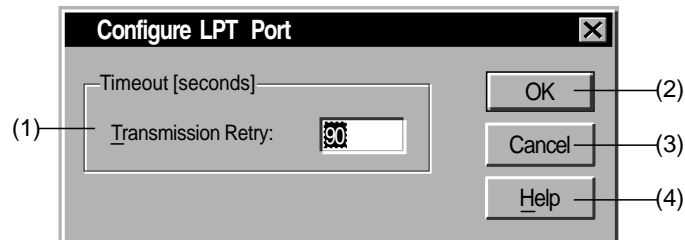
**Figure 1-7-7**

- (1) Available Printer Ports :** Displays the list of ports which can be added. Select one port from the list. The printer cannot be connected to ports other than Local Port and AXIS CAPT Port (network adapter port.)
- (2) New Monitor :** Installs the print monitor. Not available for this printer.
- (3) New Port :** Opens the Port Name dialog box which enables you to enter the name of the port to be added.
- (4) Cancel :** Returns to the Ports tab without changing the items.

**◆ Configure LPT Ports Dialog Box**

Use this dialog box to set the time-out period until the PC notifies the user that the printer does not respond. It can be opened by clicking the Configure Ports button in the Ports tab.

The configure LPT Port dialog box is shown in Figure 1-7-8.



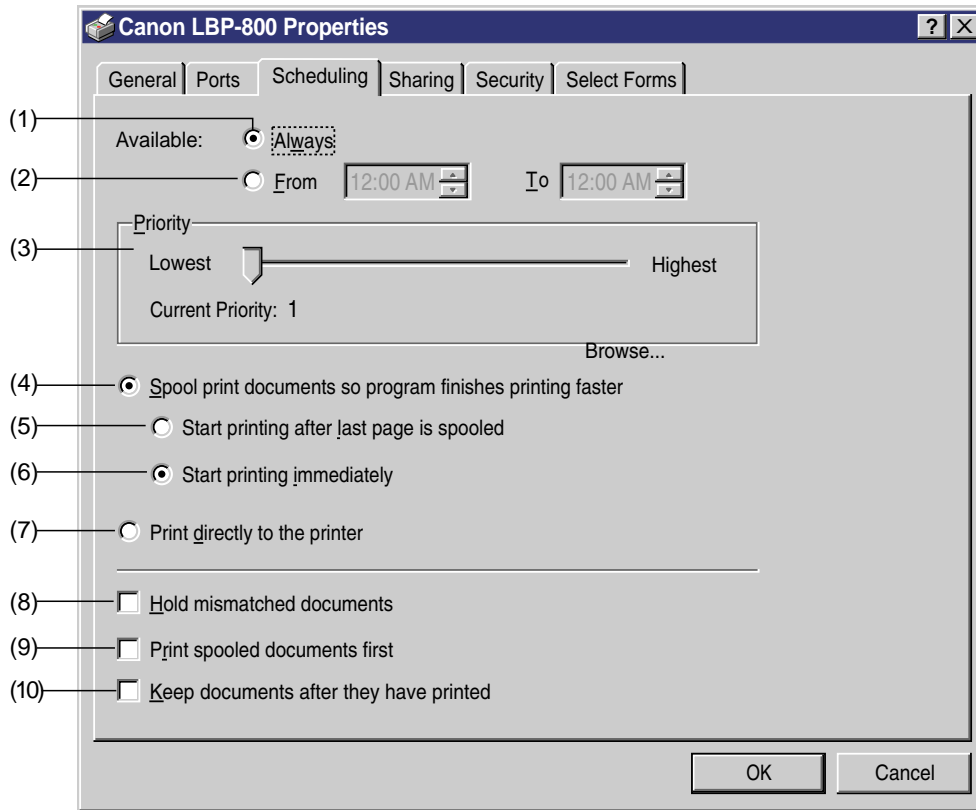
**Figure 1-7-8**

- (1) Transmission Retry** : Sets the time-out period of ports (Unit: second)
- (2) OK** : Changes the items in this dialog box and returns to the Printer Ports tab.
- (3) Cancel** : Returns to the Printer Ports tab without changing its items in this dialog box.
- (4) Help** : Opens the Help topics.

## ● Scheduling Tab

Use this tab to schedule a set time for printing, to set printing priorities, and to specify the print data spooling method. It can be opened by clicking the Scheduling tab in the Properties dialog box.

The Scheduling tab is shown in Figure 1-7-9.



**Figure 1-7-9**

- (1) **Always** : Keeps the printer ready to print for 24 hours a day.
- (2) **From to** : Keeps the printer to ready to print only during the specified period. When this button is selected, specific time can be entered in the spin boxes.
- (3) **Priority** : Sets default printing priorities of documents. Documents with high priorities will be printed before documents with low priorities.
- (4) **Spool print documents so program finishes printing faster** : Sets this option on to spool page at printing. Keep this option on for this printer. When this option is on, option buttons from (6) to (10) become available.
- (5) **Start printing after last page is spooled** : Starts printing after the last page of the document is spooled.
- (6) **Start printing immediately** : Starts printing after the first page of the document is spooled.
- (7) **Print directly to the printer** : Sends the data directly to the printer without spooling. Keep this setting off as printing cannot be conducted from applications when it is on. (The Warning dialog box will appear when it is set on.)
- (8) **Hold mismatched documents** : The spooler compares the settings of the printer and document before sending the document and holds the document in the queue if the data do not match.
- (9) **Print spooled documents first** : If there is a spooled document when the document to be printed next, prints the spooled document first even if its printing priority is lower than that of the document being spooled at that moment.

Sample of manual. Download All 178 pages at:

<https://www.arepairmanual.com/downloads/1999-canon-lbp-800-printer-service-repair-workshop-manual/>