

# Canon

Product: 2006 Canon EOS DIGITAL REBEL XTi/EOS 400D  
Full Download: <https://www.irepairmanual.com/downloads/2006-canon-eos-digital-rebel-xtieos-400d-digital-camera-service-repair-workshop-manual/>

# DIGITAL EOS REBEL XTi EOS 400D DIGITAL



Sample manual. Download All pages at:

<https://www.irepairmanual.com/downloads/2006-canon-eos>

Exif Print

DPOF

PictBridge

DIRECT  
PRINT

BUBBLE JET  
DIRECT

INSTRUCTION  
MANUAL

Canon

EOS REBEL  
XTi

EOS 400D  
DIGITAL

INSTRUCTION MANUAL



# Thank you for purchasing a Canon product.

Product: 2006 Canon EOS DIGITAL REBEL XTi/EOS 400D DIGITAL

The EOS DIGITAL REBEL XTi/EOS 400D DIGITAL is a high-performance, digital single-lens reflex camera with a 10.10-megapixel imaging sensor. The camera provides many features such as Picture Styles to enhance your photographic expression, fast autofocus for moving subjects, shooting modes for beginners as well as advanced users, and direct printing.

Also, the Self Cleaning Sensor Unit removes dust adhering to the sensor.

## Get to know your camera while shooting

This manual explains how to shoot various subjects and scenes for both beginners and advanced users. With a digital camera, you can immediately view the image you have captured. While reading this manual, take pictures as instructed and check the results. This is how you can learn to use the camera and better enjoy photography.

To prevent botched pictures and accidents, read the Safety Warnings (p.10,11) and Handling Precautions (p.12,13).

## Test the Camera Before Using

After shooting, playback and check the image whether it has been properly recorded.

If the camera or memory card is faulty and the images cannot be recorded on the card or be read by a personal computer, Canon cannot be held liable.

## Copyrights

Copyright laws in your country may prohibit the use of your recorded images of people and certain subjects for anything but private enjoyment. Also be aware that certain public performances, exhibitions, etc., may prohibit photography even for private enjoyment.

## Web site to learn and enjoy photography

<http://web.canon.jp/Imaging/enjoydslr/index.html>

Sample manual. Download All pages at:

<https://www.arepairmanual.com/downloads/2006-canon->

## Item Check List

---

Before starting, check that all the following items have been included with your camera. If anything is missing, contact your dealer. The accessories included can also be checked in the System Map (p.164).

---








- Camera: EOS DIGITAL REBEL XTi/EOS 400D DIGITAL**  
(includes eyecup, body cap, and installed battery for the date/time clock)
  - Lens: EF-S18-55mm f/3.5-5.6 II**  
(includes lens cap, dust cap) \*Lens Kit only.
  - Power Source: Battery Pack NB-2LH** (with protective cover)
  - Charger: Battery Charger CB-2LW/CB-2LWE**  
\*CB-2LW or CB-2LWE is included.
    - Power Cord for Battery Charger** \*For CB-2LWE.
  - 2 Cables**
    - Interface Cable IFC-400PCU**
    - Video Cable VC-100**
  - Strap: EW-100DBII** (with eyepiece cover)
- 
- 2 CD-ROMs**
    - EOS DIGITAL Solution Disk** (bundled software)
    - Software Instruction Manual** (PDF)
- 
- Pocket Guide**  
Quick start guide to shooting.
  - EOS DIGITAL REBEL XTi/EOS 400D DIGITAL Instruction Manual**  
(this booklet)
  - Software Guide**  
Gives an overview of the bundled software and explains the software installation procedure.
- 
- Warranty Card of Camera**
  - Warranty Card of Lens** \*Lens Kit only.
- 

\* Be careful not to lose any of the above items.

\* **The CF card (for recording images) is not included.** Please purchase it separately.

# Conventions Used in this Manual


## Icons in this Manual

- The  icon indicates the Main Dial.
- The  and  icons indicate the cross keys.
- The  icon indicates the SET button.
- ,  or  indicates that the respective function remains active for 4 sec., 6 sec., or 16 sec. respectively after you let go of the button.
- In this manual, the icons and markings indicating the camera's buttons, dials, and settings correspond to the icons and markings on the camera and on the LCD monitor.
- The **MENU** icon indicates a function which can be changed by pressing the <MENU> button and changing the setting.
- The ★ icon on the upper right of the page indicates that the function is available only in the Creative Zone modes (p.20).

## About (p.\*\*)

- Indicates the reference page number.

## About the ? Symbols

 : Tip or advice for better shooting.

? : Problem-solving advice.

 : Warning to prevent shooting problems.

 : Supplemental information.

## Basic Assumptions

\* All operations explained in this manual assume that the power switch is already set to <ON>.

\* It is assumed that all the menu settings and Custom Functions are set to the default.

\* For explanatory purposes, the instructions show the camera attached with an EF-S18-55mm f/3.5-5.6 II lens.

# Contents

## Introduction

Item Check List .....	3
Conventions Used in this Manual .....	4
Contents at a Glance .....	8
Handling Precautions .....	12
Quick Start Guide .....	14
Nomenclature .....	16

## 1 Getting Started 23

Recharging the Battery .....	24
Installing and Removing the Battery .....	26
Installing and Removing the CF Card .....	28
Mounting and Detaching a Lens .....	30
How to Shoot .....	31
Switching the LCD Monitor Screen .....	34
Menu Operations and Settings .....	35
Before You Start .....	37

## 2 Basic Shooting and Image Playback 39

Fully Automatic Shooting .....	40
Full Auto Techniques .....	42
Shooting Portraits .....	43
Shooting Landscapes .....	44
Shooting Close-ups .....	45
Shooting Moving Subjects .....	46
Shooting Portraits at Night .....	47
Disabling Flash .....	48
Using the Self-timer .....	49
Image Playback .....	50

## 3 Advanced Shooting Techniques 51

Program AE .....	52
Changing the ISO Speed .....	53
Using the Built-in Flash .....	54
Changing the AF Mode .....	56
Selecting the AF Point .....	57
Continuous Shooting .....	59
Setting the Image-Recording Quality .....	60
Selecting a Picture Style .....	63

<b>4</b>	<b>More Advanced Techniques</b>	<b>65</b>
	Action Shots .....	66
	Changing the Depth of Field.....	68
	Manual Exposure .....	71
	Automatic Depth-of-Field AE.....	72
	Changing the Metering Mode.....	73
	Setting Exposure Compensation.....	74
	Auto Exposure Bracketing.....	76
	Customizing the Picture Style.....	78
	Defining a New Picture Style.....	81
	Setting the Color Space .....	83
	AE Lock.....	84
	FE Lock.....	85
	Setting the White Balance.....	86
	White Balance Correction.....	88
	Preventing Camera Shake.....	90
<b>5</b>	<b>Handy Features</b>	<b>93</b>
	Handy Features.....	94
	Silencing the Beeper .....	94
	CF Card Reminder .....	94
	Setting the Image Review Time .....	94
	Set the Auto Power-off Time .....	95
	Setting the LCD Monitor Brightness.....	95
	File Numbering Method.....	96
	Auto Rotate of Vertical Images.....	98
	Checking Camera Function Settings.....	99
	Reverting the Camera to the Default Settings.....	100
	Preventing the LCD Monitor from Turning off Automatically .....	101
	Setting Custom Functions .....	101
	Transferring Images to a Personal Computer .....	107
	Automatic Sensor Cleaning.....	111
	Appending Dust Delete Data.....	112
	About "Sensor cleaning: Manual" .....	114

<b>6</b>	<b>Image Management</b>	<b>115</b>
	Searching for Images Quickly .....	116
	Magnified View .....	118
	Rotating the Image .....	119
	Auto Playback .....	120
	Displaying the Images on TV .....	121
	Protecting Images .....	122
	Erasing Images .....	123
	Shooting Information Display .....	124
<b>7</b>	<b>Printing Images</b>	<b>127</b>
	Preparing to Print .....	129
	Printing with PictBridge .....	132
	Printing with CP Direct and BJ Direct .....	139
	Trimming the Image .....	142
	Easy Printing .....	143
	Print Ordering .....	144
	Direct Printing with DPOF .....	149
<b>8</b>	<b>Reference</b>	<b>151</b>
	External Speedlites .....	152
	Wireless Remote Control .....	153
	Using a Household Power Outlet .....	154
	Replacing the Date/Time Battery .....	155
	Menu Settings .....	156
	Function Availability Table .....	158
	When Autofocus Fails .....	160
	Troubleshooting Guide .....	161
	Error Codes .....	163
	System Map .....	164
	Specifications .....	166
	Index .....	176



## Contents at a Glance

### Shooting

- **Shoot automatically** → **p.39 - 48** (Basic Zone modes)
- **Shoot continuously** → **p.43, 46, 59** (📷 Continuous shooting)
- **Take a picture of myself in a group** → **p.49** (⌚ Self-timer)
- **Freeze the action**
- **Take a blurred action shot** → **p.66** (Tv Shutter-priority AE)
- **Blur the background**
- **Keep the background in sharp focus**  
→ **p.68** (Av Aperture-priority AE)
- **Adjust the image brightness (exposure)**  
→ **p.74** (Exposure compensation)
- **Shoot under low light** → **p.40, 54** (Flash photography)
- **Shoot without flash** → **p.48** (🚫 Flash Off)
- **Photograph fireworks at night** → **p.71** (Bulb exposure)

### Image Quality

- **Change the image effects** → **p.63** (Selecting a Picture Style)
- **Make a large size print of the picture** → **p.60** (📐L, 📐L, RAW)
- **Take many pictures** → **p.60** (📐S, 📐S)
- **Take black-and-white or sepia photos** → **p.64** (Monochrome)





## Focusing

- **Change the point of focus** → **p.57** (AF point selection)
- **Select the AF point quickly** → **p.103** (C.Fn-1-4)
- **Shoot a moving subject** → **p.46, 56** (AI Servo AF)

## Playback

- **View the images with the camera** → **p.50** (Playback)
- **Search for pictures quickly** → **p.116** (Index display)
- **Prevent important images from accidental deletion**  
→ **p.122** (Image protect)
- **Delete unnecessary images** → **p.123** (Delete)
- **View the images on a TV set** → **p.121** (Video OUT)
- **Set the LCD brightness** → **p.95** (LCD Brightness)

## Printing

- **Print pictures easily** → **p.127** (Direct printing)



## Safety Warnings

Follow these safeguards and use the equipment properly to prevent injury, death, and material damage.

### Preventing Serious Injury or Death

- To prevent fire, excessive heat, chemical leakage, and explosions, follow the safeguards below:
  - Do not use any batteries, power sources, and accessories not specified in this booklet. Do not use any home-made or modified batteries.
  - Do not short-circuit, disassemble, or modify the battery pack or back-up battery. Do not apply heat or apply solder to the battery pack or back-up battery. Do not expose the battery pack or back-up battery to fire or water. And do not subject the battery pack or back-up battery to strong physical shock.
  - Do not install the battery pack or back-up battery in reversed polarity (+ -). Do not mix new and old or different types of batteries.
  - Do not recharge the battery pack outside the allowable ambient temperature range of 0°C - 40°C (32°F - 104°F). Also, do not exceed the recharging time.
  - Do not insert any foreign metallic objects into the electrical contacts of the camera, accessories, connecting cables, etc.
- Keep the back-up battery away from children. If a child swallows the battery, consult a physician immediately. (Battery chemicals may harm the stomach and intestines.)
- When disposing of a battery pack or back-up battery, insulate the electrical contacts with tape to prevent contact with other metallic objects or batteries. This is to prevent fire or an explosion.
- If excessive heat, smoke, or fumes are emitted during battery pack recharging, immediately unplug the battery charger from the power outlet to stop the recharging and prevent a fire.
- If the battery pack or back-up battery leaks, changes color, deforms, or emits smoke or fumes, remove it immediately. Be careful not to get burned in the process.
- Prevent any battery leakage from contacting your eyes, skin, and clothing. It can cause blindness or skin problems. If the battery leakage contacts your eyes, skin, or clothing, flush the affected area with lots of clean water without rubbing it. See a physician immediately.
- During the recharging, keep the equipment away from the reach of children. The cord can accidentally choke the child or give an electrical shock.
- Do not leave any cords near a heat source. It can deform the cord or melt the insulation and cause a fire or electrical shock.
- Do not fire the flash at someone driving a car. It may cause an accident.
- Do not fire the flash near a person's eyes. It may impair the person's vision. When using flash to photograph an infant, keep at least 1 meter away.
- Before storing the camera or accessory when not in use, remove the battery pack and disconnect the power plug. This is to prevent electrical shock, heat generation, and fire.
- Do not use the equipment where there is flammable gas. This is to prevent an explosion or fire.

- 
- If you drop the equipment and the casing breaks open to expose the internal parts, do not touch the internal parts due to the possibility of electrical shock.
  - Do not disassemble or modify the equipment. High-voltage internal parts can cause electrical shock.
  - Do not look at the sun or an extremely bright light source through the camera or lens. Doing so may damage your vision.
  - Keep the camera from the reach of small children. The neck strap can accidentally choke the child.
  - Do not store the equipment in dusty or humid places. This is to prevent fire and electrical shock.
  - Before using the camera inside an airplane or hospital, check if it is allowed. Electromagnetic waves emitted by the camera may interfere with the plane's instruments or the hospital's medical equipment.
  - To prevent fire and electrical shock, follow the safeguards below:
    - Always insert the power plug all the way in.
    - Do not handle a power plug with wet hands.
    - When unplugging a power plug, grasp and pull the plug instead of the cord.
    - Do not scratch, cut, or excessively bend the cord or put a heavy object on the cord. Also do not twist or tie the cords.
    - Do not connect too many power plugs to the same power outlet.
    - Do not use a cord whose insulation has been damaged.
  - Occasionally unplug the power plug and use a dry cloth to clean off the dust around the power outlet. If the surrounding is dusty, humid, or oily, the dust on the power outlet may become moist and short-circuit the outlet to cause a fire.
- 

## Preventing Injury or Equipment Damage

- Do not leave equipment inside a car under the hot sun or near a heat source. The equipment may become hot and cause skin burns.
- Do not carry the camera around while it is attached to a tripod. Doing so may cause injury. Also make sure the tripod is sturdy enough to support the camera and lens.
- Do not leave a lens or lens-attached camera under the sun without the lens cap attached. Otherwise, the lens may concentrate the sun's rays and cause a fire.
- Do not cover or wrap the battery-recharging apparatus with a cloth. Doing so may trap heat within and cause the casing to deform or catch fire.
- If you drop the camera in water or if water or metal fragments enter inside the camera, promptly remove the battery pack and back-up battery. This is to prevent fire and electrical shock.
- Do not use or leave the battery pack or back-up battery in a hot environment. Doing so may cause battery leakage or a shorter battery life. The battery pack or back-up battery can also become hot and cause skin burns.
- Do not use paint thinner, benzene, or other organic solvents to clean the equipment. Doing so may cause fire or a health hazard.

**If the product does not work properly or requires repair, contact your dealer or your nearest Canon Service Center.**

# Handling Precautions

## Camera Care

- This camera is a precision instrument. Do not drop it or subject it to physical shock.
- The camera is not waterproof and cannot be used underwater. If you accidentally drop the camera into water, promptly consult your nearest Canon Service Center. Wipe off any water droplets with a dry cloth. If the camera has been exposed to salty air, wipe with a well-wrung wet cloth.
- Never leave the camera near anything having a strong magnetic field such as a magnet or electric motor. Also avoid using or leaving the camera near anything emitting strong radio waves such as a large antenna. Strong magnetic fields can cause camera misoperation or destroy image data.
- Do not leave the camera in excessive heat such as in a car in direct sunlight. High temperatures can cause the camera to malfunction.
- The camera contains precision electronic circuitry. Never attempt to disassemble the camera yourself.
- Use a blower to blow away dust on the lens, viewfinder, reflex mirror, and focusing screen. Do not use cleaners that contain organic solvents to clean the camera body or lens. For stubborn dirt, take the camera to the nearest Canon Service Center.
- Do not touch the camera's electrical contacts with your fingers. This is to prevent the contacts from corroding. Corroded contacts can cause camera misoperation.
- If the camera is suddenly brought in from the cold into a warm room, condensation may form on the camera and internal parts. To prevent condensation, first put the camera in a sealed plastic bag and let it adjust to the warmer temperature before taking it out of the bag.
- If condensation forms on the camera, do not use the camera. This is to avoid damaging the camera. If there is condensation, remove the lens, CF card and battery from the camera, and wait until the condensation has evaporated before using the camera.
- If the camera will not be used for an extended period, remove the battery and store the camera in a cool, dry, well-ventilated location. Even while the camera is in storage, press the shutter button a few times once in a while to check that the camera is still working.
- Avoid storing the camera where there are corrosive chemicals such as a darkroom or chemical lab.
- If the camera has not been used for an extended period, test all its functions before using the camera. If you have not used the camera for some time or if there is an important shoot coming up, have the camera checked by your Canon dealer or check the camera yourself and make sure it is working properly.

## LCD Monitor

- Although the LCD monitor is manufactured with very high precision technology with over 99.99% effective pixels, there might be a few dead pixels among the remaining 0.01% or less pixels. Dead pixels displaying only black or red, etc., are not a malfunction. They do not affect the images recorded.
- If the LCD monitor is left on for a prolonged period, screen burn-in may occur where you see remnants of what was displayed. However, this is only temporarily and will disappear when the camera is left unused for a few days.

## CF Card

- The CF card is a precision device. Do not drop the CF card or subject it to vibration. Doing so could damage the images recorded on them.
- Do not store or use the CF card near anything having a strong magnetic field such as a TV set, speakers, or magnet. Also avoid places prone to having static electricity. Otherwise, the images recorded on the CF card might be lost.
- Do not leave the CF card in direct sunlight or near a heat source. Doing so can warp the cards and make them unusable.
- Do not spill any liquid onto the CF card.
- Always store your CF cards in a case to protect the data stored on them.
- Do not bend the card or subject it to any excessive force or physical shock.
- Do not store the CF card in hot, dusty, or humid locations.

## Lens Electrical Contacts

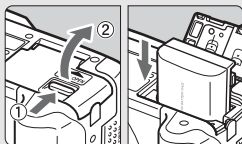
After detaching the lens from the camera, attach the lens caps or put down the lens with the rear end up to avoid scratching the lens surface and electrical contacts.

Contacts



# Quick Start Guide

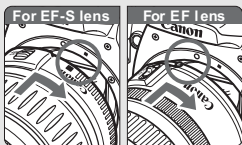
1



**Insert the battery.** (p.26)

To recharge the battery, see page 24.

2

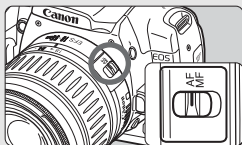


**Attach the lens.** (p.30)

When attaching an EF-S lens, align it with the white index on the camera.

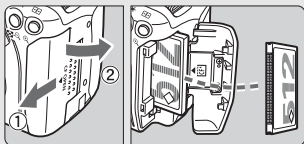
For other lenses, align it with the red index.

3



**Set the lens focus mode switch to <AF>.** (p.30)

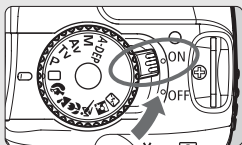
4



**Open the CF card slot cover and insert a CF card.** (p.28)

Face the label side toward you and insert the end with the small holes into the camera.

5



**Set the power switch to <ON>.** (p.31)

► The current camera settings appear on the LCD monitor.

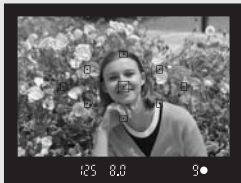
6



**Set the Mode Dial to  $\square$  (Full Auto).** (p.40)

All the necessary camera settings will be set automatically.

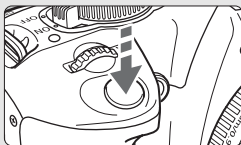
7



**Focus the subject.** (p.33)

Look through the viewfinder and aim the viewfinder center over the subject. Press the shutter button halfway, and the camera will focus the subject.

8



**Take the picture.** (p.33)

Press the shutter button completely to take the picture.

9



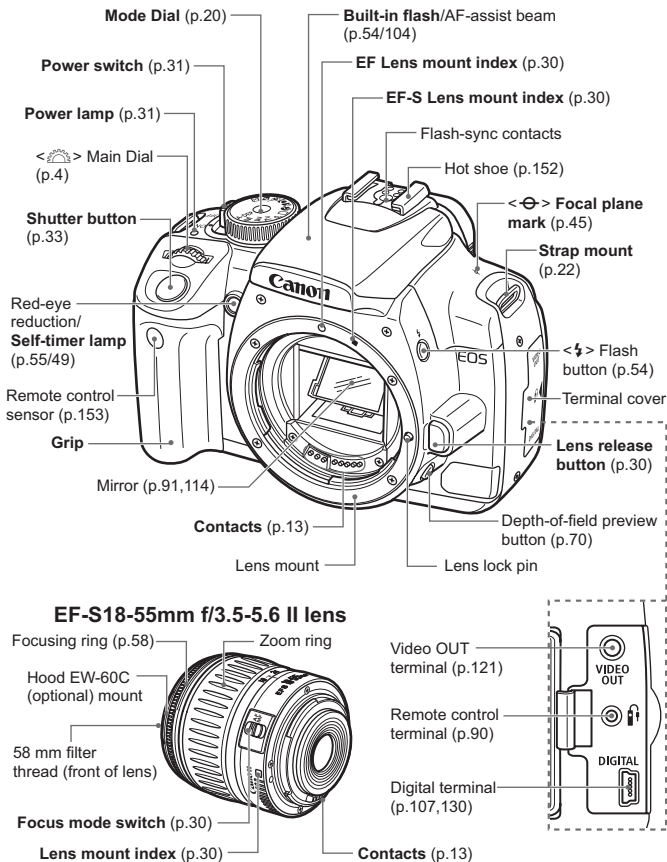
**Review the picture on the LCD monitor.** (p.94)

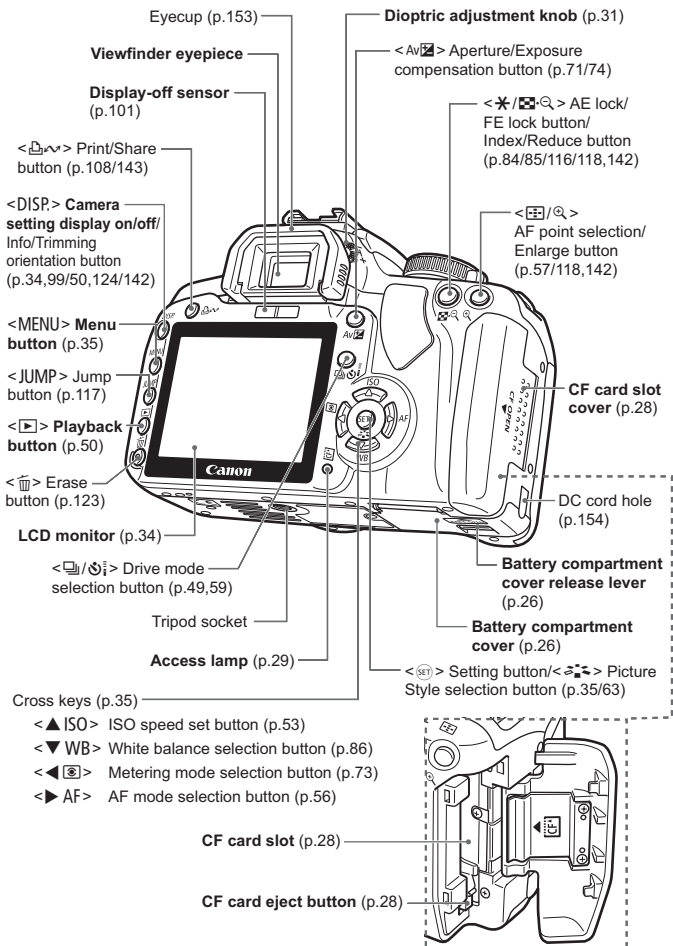
The captured image will be displayed for about 2 sec. on the LCD monitor.

- The camera setting display on the LCD monitor turns off automatically when you put your eye near the eyepiece.
- To view images captured so far, see “Image Playback” (p.50).
- To delete an image, see “Erasing Images” (p.123).

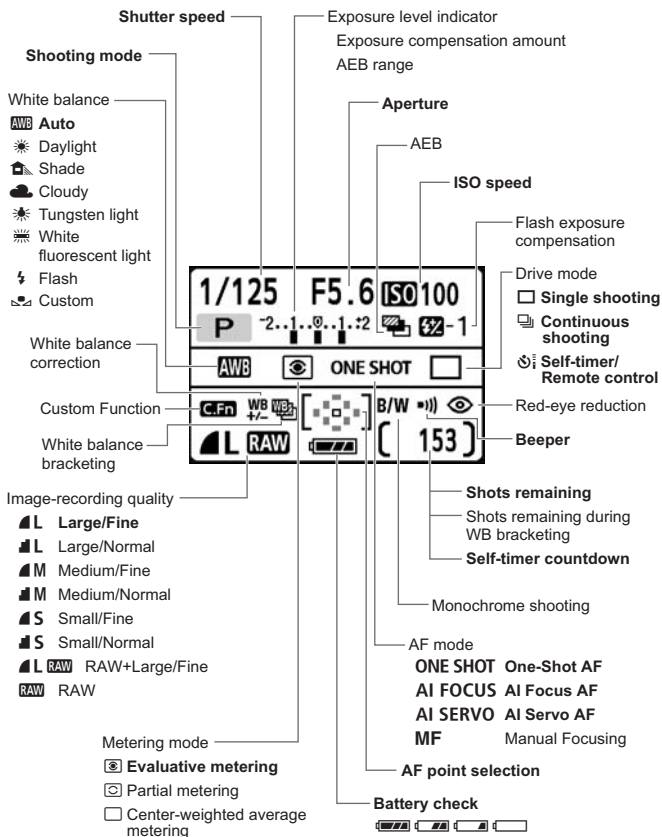
# Nomenclature

The parts indicated in bold are used up to the “Basic Shooting and Image Playback” section.



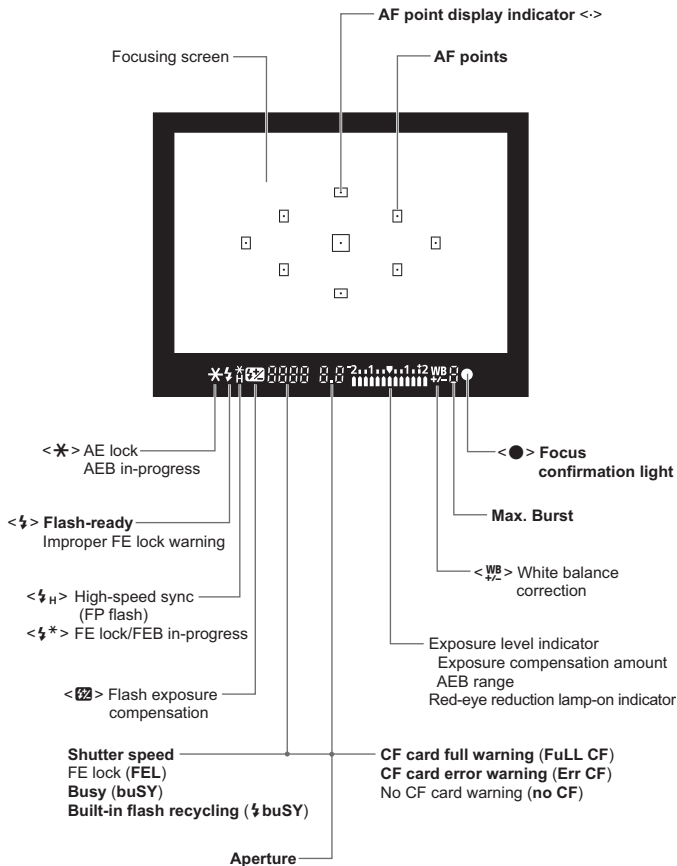


## Camera Setting Display



The display will show only the settings currently applicable.

## Viewfinder Information



The display will show only the settings currently applicable.

## Mode Dial

The Mode Dial has the Basic Zone modes and Creative Zone modes.

### Creative Zone

These modes give you more control over the result.

- P** : Program AE (p.52)
- Tv** : Shutter-priority AE (p.66)
- Av** : Aperture-priority AE (p.68)
- M** : Manual exposure (p.71)
- A-DEP** : Automatic Depth-of-field AE (p.72)

Full Auto

### Basic Zone

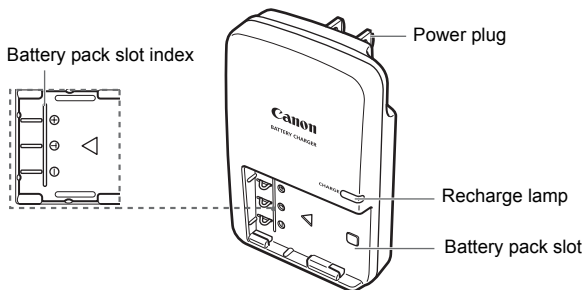
All you do is press the shutter button. Fully automatic shooting for specific kinds of subjects.

-  : **Full Auto** (p.40)

### Image Zone

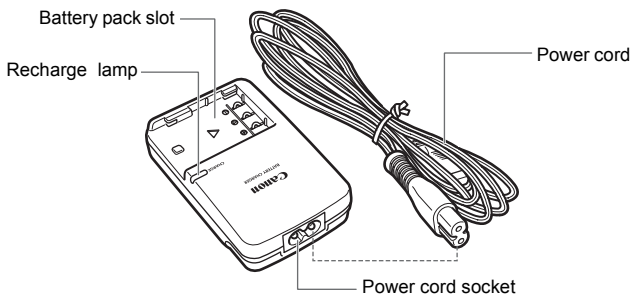
-  : Portrait (p.43)
-  : Landscape (p.44)
-  : Close-up (p.45)
-  : Sports (p.46)
-  : Night Portrait (p.47)
-  : Flash Off (p.48)

## Battery Charger CB-2LW



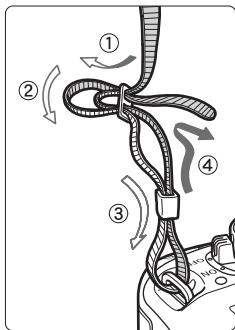
This power unit is intended to be correctly orientated in a vertical or floor mount position.

## Battery Charger CB-2LWE



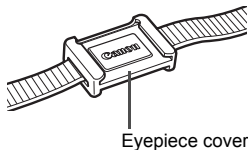
Do not use any AC adapters or compact power adapters other than the ones (rated input: 100-240 V AC, 50/60 Hz, rated output: 7.8-8.1 V DC) shown on the system map (p.164). Using such incompatible adapters may result in fire, overheating, or electrical shock.

## Attaching the Strap



Pass the end of the strap through the camera's strap mount eyelet from the bottom. Then pass it through the strap's buckle as shown in the illustration. Pull the strap to take up any slack and make sure the strap will not loosen from the buckle.

- The eyepiece cover is also attached to the strap. (p.153)



- Adobe is a trademark of Adobe Systems Incorporated.
- CompactFlash is a trademark of SanDisk Corporation.
- Windows is a trademark or registered trademark of Microsoft Corporation in the United States and other countries.
- Macintosh is a registered trademark of Apple Corporation in the United States and other countries.
- All other corporate and product names and trademarks mentioned in this manual are the property of their respective owners.

\* This digital camera supports Design rule for Camera File System 2.0 and Exif 2.21 (also called "Exif Print"). Exif Print is a standard that enhances compatibility between digital cameras and printers. By connecting to an Exif Print-compliant printer, the shooting information is incorporated to optimize the print output.

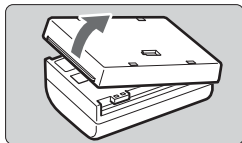
# 1

## Getting Started

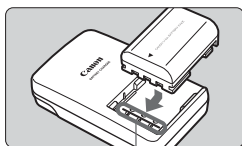
---

This chapter explains preliminary steps and basic camera operations.

# Recharging the Battery



**1** Remove the cover.

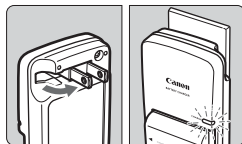


Battery pack slot index

**2** Attach the battery.

- Align the battery's front edge with the battery charger's index line. While pressing down the battery, slide it in the direction of the arrow.
- To detach the battery, follow the above procedure in reverse.

## CB-2LW

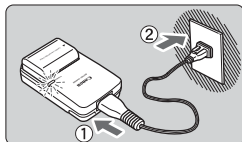


**3** For CB-2LW

**Flip out the prongs and recharge the battery.**

- As shown by the arrow, flip out the battery charger's prongs.
- Insert the prongs into a power outlet.

## CB-2LWE

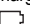


**For CB-2LWE**

**Connect the power cord and recharge the battery.**

- Connect the power cord to the charger and insert the plug into the power outlet.
- ▶ Recharging starts automatically and the recharge lamp turns orange.
- ▶ When the battery is fully recharged, the recharge lamp will turn green.
- **It takes about 90 minutes to fully recharge a completely exhausted battery.**

## Tips for Using the Battery and Charger

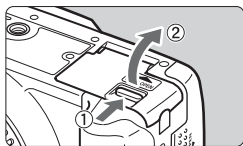
- **Recharge the battery on the day before or on the day it is to be used.**  
An unused charged battery will still gradually lose its power over time. The time required to recharge the battery depends on the ambient temperature and battery's power level.
- **Do not recharge the battery for longer than 24 hours** (to avoid degrading the battery performance).
- **After recharging the battery, detach it and unplug the charger from the power outlet.**
- **You can attach the cover in a different orientation to indicate whether the battery has been recharged or not.**  
If the battery has been recharged, attach the cover so that the battery-shaped hole <  > is aligned over the blue seal on the battery. If the battery is exhausted, attach the cover in the opposite orientation.
- **Use the battery in an ambient temperature range of 0°C - 40°C / 32°F - 104°F.**  
To attain best battery performance, an ambient temperature of 10°C - 30°C / 50°F - 86°F is recommended. In cold locations such as snowy areas, battery performance and operation time may temporarily decrease.
- **When not using the camera, remove the battery.**  
If the battery is left in the camera for a prolonged period, a small amount of power current is released, resulting in excess discharge and shorter battery life. Store the battery with the cover attached. Storing the battery after it is fully charged can lower the battery's performance.
- **The battery charger can also be used in foreign countries.**  
The battery charger is compatible with a 100 V AC to 240 V AC 50/60 Hz power source. If the shape of the prongs is different, purchase a plug adapter for that country. Do not attach any voltage transformer to the battery charger. Doing so can damage the battery charger.
- **If the battery becomes exhausted quickly even after being fully charged, replace the battery.**  
Replace the battery with a new one.



- Do not use the battery charger to recharge any battery other than Battery Pack NB-2LH.
- Battery Pack NB-2LH is dedicated to Canon only. Using it with a non-Canon battery charger or product may result in malfunction or accidents for which Canon cannot be held liable.

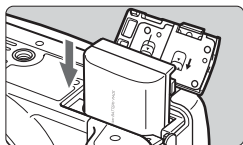
# Installing and Removing the Battery

## Installing the Battery



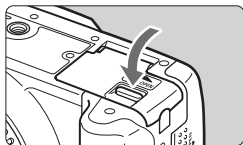
### 1 Open the battery compartment cover.

- Slide the lever as shown by the arrow and open the cover.



### 2 Insert the battery.

- Insert the end with the battery contacts.
- Insert the battery until it locks in place.



### 3 Close the cover.


- Press the cover until it snaps shut.

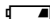
## Checking the Battery Level

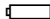
When the power switch is set to <ON> (p.31), the battery level will be displayed:



 : Battery level OK.

 : Battery level is slightly down, but adequate power remains.

 : Battery will be exhausted soon.

 : Battery must be recharged.

**Battery Life**

[Approx. number of shots]

Temperature	Shooting Conditions	
	No Flash	50% Flash Use
At 23°C / 73°F	500	360
At 0°C / 32°F	370	280

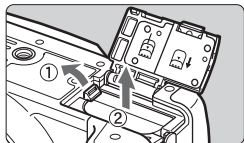
- The figures above are based on a fully-charged NB-2LH and CIPA (Camera & Imaging Products Association) testing criteria.



- The actual number of shots may be fewer than indicated above depending on the shooting conditions.
- Pressing the shutter button halfway for long periods or operating only the autofocus can also reduce the number of possible shots.
- The lens operation is powered by the camera's battery. Using certain lenses can reduce the number of possible shots.

**Removing the Battery****1 Open the battery compartment cover.**

- Slide the lever as shown by the arrow and open the cover.

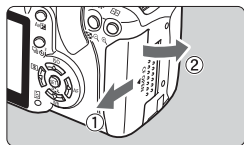
**2 Remove the battery.**

- Slide the battery lock lever as shown by the arrow and remove the battery.
- To prevent shorting, be sure to attach the protective cover to the battery.

# Installing and Removing the CF Card

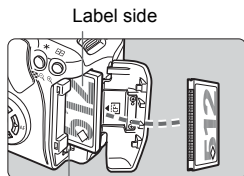
The captured image is recorded onto the CF card (optional). Although the thickness is different between the Type I and Type II CF cards, either one can be inserted into the camera. The camera is also compatible with Microdrive (hard disk-type) and CF cards with 2 GB or higher capacity.

## Installing the Card



### 1 Open the cover.

- Slide the cover as shown by the arrow to open it.

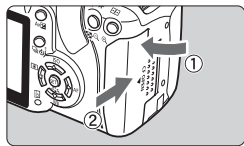


### 2 Insert the CF card.

- As shown in the illustration, face the label side toward you and insert the end with the small holes into the camera.

**Inserting the CF card in the wrong way may damage the camera.**

- ▶ The CF card eject button will stick up.



### 3 Close the cover.

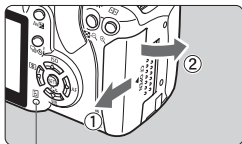
- Close the cover and slide it in the direction shown by the arrow until it snaps shut.
- When you set the power switch to <ON>, the number of remaining shots will be displayed on the LCD monitor.



Shots remaining

The shots remaining depends on the remaining capacity of the CF card, image recording quality, ISO speed, etc.

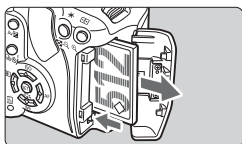
## Removing the Card



Access lamp

### 1 Open the cover.

- Set the power switch to <OFF>.
- Check that “Recording...” is not displayed on the LCD monitor.
- Make sure the access lamp is off, then open the cover.



### 2 Remove the CF card.

- Press the CF card eject button.
- ▶ The CF card will come out.
- Close the cover.



- **A blinking access lamp indicates that data is being transferred, read, written, or erased on the CF card. While the access lamp is lit or blinking, do not do any of the following. Doing so may damage the image data. It may also damage the CF card or camera.**
  - Opening the CF card slot cover.
  - Removing the battery.
  - Shaking or banging the camera around.
- If the CF card already contains recorded images, the image number might not start from 0001. (p.96)
- If a CF card-related error is displayed, see page 38.
- Compared to CF cards, hard disk-type memory cards are more vulnerable to vibration and physical shock. If you use a such a card, be careful not to subject the camera to vibration or physical shock especially while recording or displaying images.

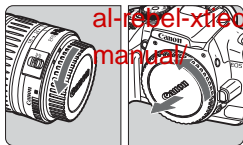


On the menu, if you set [**Shoot w/o card**] to [**Off**], it will prevent shooting without a CF card. (p.94)

# Mounting and Detaching a Lens

Product: 2006 Canon EOS DIGITAL REBEL XT/EOS 400D

## Mounting a Lens

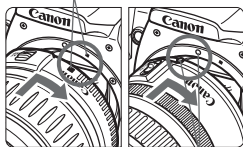


Full Download: <https://www.arepairmanual.com/download/al-rebel-xt/eos-400d-digital-camera-service-repair-works-manual/>

### 1 Remove the caps

- Remove the rear lens cap and the body cap by turning them as shown by the arrow.

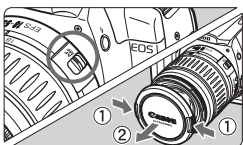
EF-S lens mount index



EF lens mount index

### 2 Attach the lens.

- Align the EF-S lens with the camera's white EF-S lens mount index and turn the lens as shown by the arrow until it clicks in place.
- When attaching a lens other than an EF-S lens, align the lens with the red EF lens mount index.

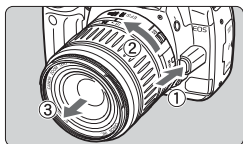


### 3 On the lens, set the focus mode switch to <AF> (autofocus).

- If it is set to <MF> (manual focus), autofocus will not operate.

### 4 Remove the front lens cap.

## Detaching the Lens



**While pressing the lens release button, turn the lens as shown by the arrow.**

- Turn the lens until it stops, then detach it.

Sample manual. Download All pages at:

<https://www.arepairmanual.com/downloads/2006-canon->

⚠ When attaching or detaching the lens, take care to prevent dust from entering the camera through the lens mount.