

Product: Kubota M8540 M9540 Service Manual

Full Download: <https://www.arepairmanual.com/downloads/kubota-m8540-m9540-service-manual/>

WSM

WORKSHOP MANUAL
TRACTOR

M8540, M9540

Kubota

Sample of manual. Download All 603 pages at:

<https://www.arepairmanual.com/downloads/kubota-m8540-m9540-service-manual/>

KiSC issued 02, 2020 A

TO THE READER

This Workshop Manual has been prepared to provide servicing personnel with information on the mechanism, service and maintenance of M8540 and M9540. It is divided into three parts, "General", "Mechanism" and "Servicing".

■ General

Information on the tractor identification, the general precautions, maintenance check list, check and maintenance and special tools are described.

■ Mechanism

Information on the construction and function are included. This part should be understood before proceeding with troubleshooting, disassembling and servicing.

Refer to Diesel Engine / Tractor Mechanism Workshop Manual (Code No. 9Y021-01874 / 9Y021-18201) for the one which has not been described to this workshop manual.

■ Servicing

Information on the troubleshooting, servicing specification lists, tightening torque, checking and adjusting, disassembling and assembling, and servicing which cover procedures, precautions, factory specifications and allowable limits.

All information illustrations and specifications contained in this manual are based on the latest product information available at the time of publication.

The right is reserved to make changes in all information at any time without notice.

Due to covering many models of this manual, information or picture being used, have not been specified as one model.

January 2007

© KUBOTA Corporation 2007

Record of Revisions

For pdf, use search function {Search word} to find all the revised locations.

Last digit of the Code No.	Month of Revision	Main Revised Point and Corrective Measures {Search word}	Reference Page
4	2015.06	Add Information about special tools. {special tools, propeller shaft, oil seal, sleeve}	G-69, G-70
		Revise the assembly drawing of the transmission. {transmission, mechanism, structure}	3-M1
		Add new information about oil seal structure. {oil seal, structure, propeller shaft}	3-S44
		Add new information about oil seal replacing method. {oil seal, propeller shaft}	3-S45
5	2019.01	Changed the order of replacing the meter panel.	9-S18 to 9-S21
6	2020.02	Changed the maintenance intervals.	G-13 to G-38



SAFETY FIRST

This symbol, the industry's "Safety Alert Symbol", is used throughout this manual and on labels on the machine itself to warn of the possibility of personal injury. Read these instructions carefully.

It is essential that you read the instructions and safety regulations before you attempt to repair or use this unit.



DANGER

: Indicates an imminently hazardous situation which, if not avoided, will result in death or serious injury.



WARNING

: Indicates a potentially hazardous situation which, if not avoided, could result in death or serious injury.



CAUTION

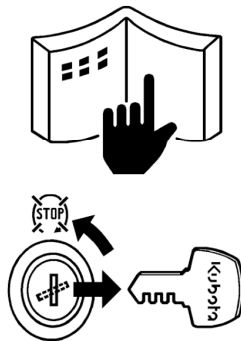
: Indicates a potentially hazardous situation which, if not avoided, may result in minor or moderate injury.

■ IMPORTANT

: Indicates that equipment or property damage could result if instructions are not followed.

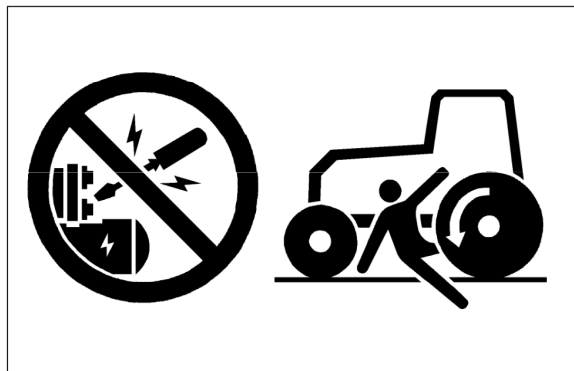
■ NOTE

: Gives helpful information.



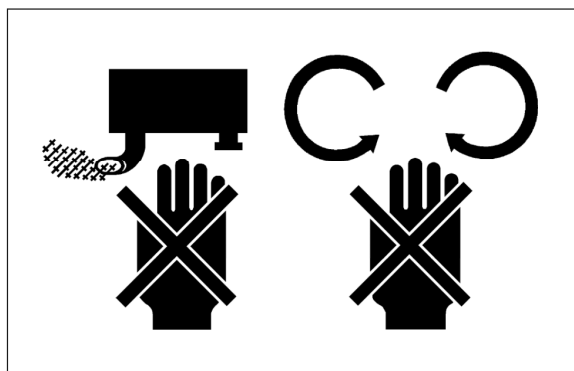
BEFORE SERVICING AND REPAIRING

- Read all instructions and safety instructions in this manual and on your machine safety decals.
- Clean the work area and machine.
- Park the machine on a firm and level ground, and set the parking brake.
- Lower the implement to the ground.
- Stop the engine, and remove the key.
- Disconnect the battery negative cable.
- Hang a "DO NOT OPERATE" tag in operator station.



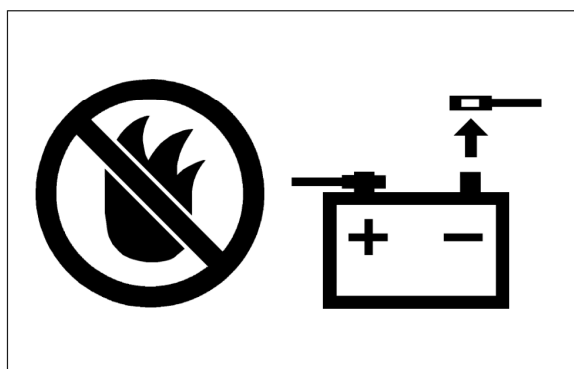
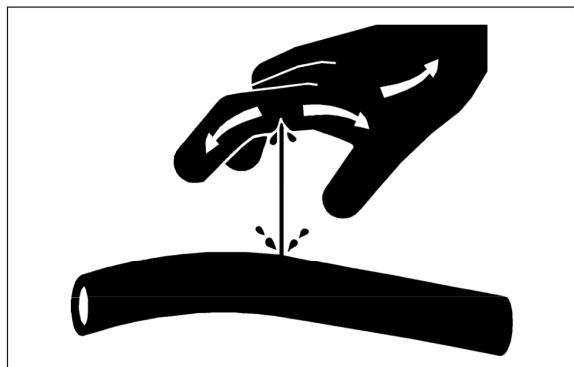
SAFETY STARTING

- Do not start the engine by shorting across starter terminals or bypassing the safety start switch.
- Do not alter or remove any part of machine safety system.
- Before starting the engine, make sure that all shift levers are in neutral positions or in disengaged positions.
- Never start the engine while standing on ground. Start the engine only from operator's seat.



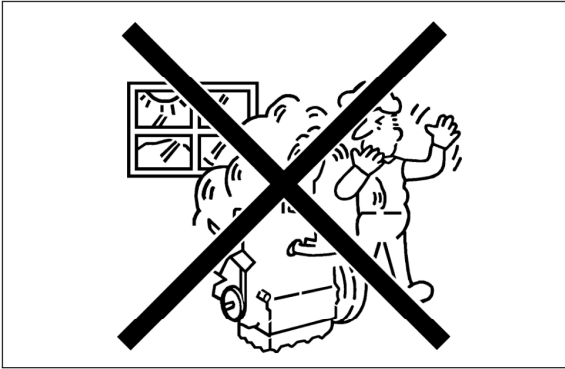
SAFETY WORKING

- Do not work on the machine while under the influence of alcohol, medication, or other substances or while fatigued.
- Wear close fitting clothing and safety equipment appropriate to the job.
- Use tools appropriate to the work. Makeshift tools, parts, and procedures are not recommended.
- When servicing is performed together by two or more persons, take care to perform all work safely.
- Do not work under the machine that is supported solely by a jack. Always support the machine by safety stands.
- Do not touch the rotating or hot parts while the engine is running.
- Never remove the radiator cap while the engine is running, or immediately after stopping. Otherwise, hot water will spout out from radiator. Only remove radiator cap when cool enough to touch with bare hands. Slowly loosen the cap to first stop to relieve pressure before removing completely.
- Escaping fluid (fuel or hydraulic oil) under pressure can penetrate the skin causing serious injury. Relieve pressure before disconnecting hydraulic or fuel lines. Tighten all connections before applying pressure.



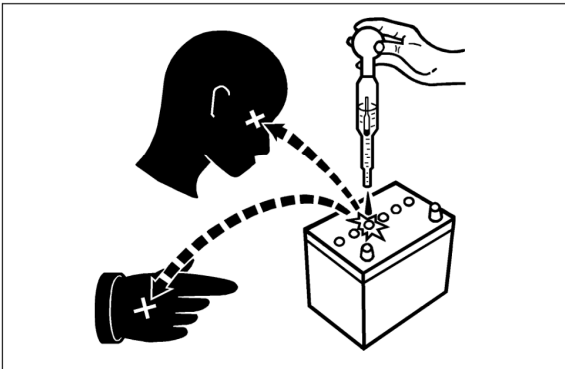
AVOID FIRES

- Fuel is extremely flammable and explosive under certain conditions. Do not smoke or allow flames or sparks in your working area.
- To avoid sparks from an accidental short circuit, always disconnect the battery negative cable first and connect it last.
- Battery gas can explode. Keep sparks and open flame away from the top of battery, especially when charging the battery.
- Make sure that no fuel has been spilled on the engine.



VENTILATE WORK AREA

- If the engine must be running to do some work, make sure the area is well ventilated. Never run the engine in a closed area. The exhaust gas contains poisonous carbon monoxide.



PREVENT ACID BURNS

- Sulfuric acid in battery electrolyte is poisonous. It is strong enough to burn skin, clothing and cause blindness if splashed into eyes. Keep electrolyte away from eyes, hands and clothing. If you spill electrolyte on yourself, flush with water, and get medical attention immediately.



DISPOSE OF FLUIDS PROPERLY

- Do not pour fluids into the ground, down a drain, or into a stream, pond, or lake. Observe relevant environmental protection regulations when disposing of oil, fuel, coolant, electrolyte and other harmful waste.



PREPARE FOR EMERGENCIES

- Keep a first aid kit and fire extinguisher handy at all times.
- Keep emergency numbers for doctors, ambulance service, hospital and fire department near your telephone.

SAFETY DECALS

The following safety decals are installed on the machine.

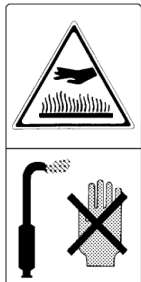
If a decal becomes damaged, illegible or is not on the machine, replace it. The decal part number is listed in the parts list.

■ ROPS Model

- (1) Part No. 6C090-4958-2
Stay clear of engine fan and fanbelt.



- (2) Part No. 3N300-4958-1
Do not touch hot surface like muffler, etc.



- (3) Part No. TA040-4965-2



⚠ DANGER

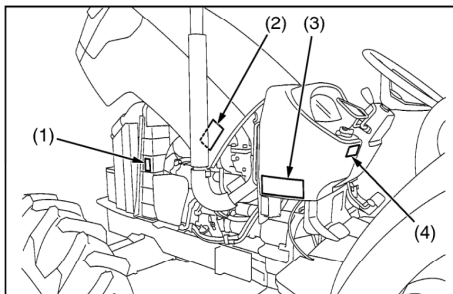
TO AVOID POSSIBLE INJURY OR DEATH FROM A MACHINE RUNAWAY.

1. Do not start engine by shorting across starter terminals or bypassing the safety start switch. Machine may start in gear and move if normal starting circuitry is bypassed.
2. Start engine only from operator's seat with transmission and PTO OFF. Never start engine while standing on the ground.

- (4) Part No. 3F240-9857-1 [Hydraulic shuttle model]

⚠ WARNING

To avoid free wheeling when shifting the shuttle lever while on a slope: Stop completely by using the brake and by depressing the clutch pedal. Start off after selecting shuttle direction by releasing the clutch pedal.



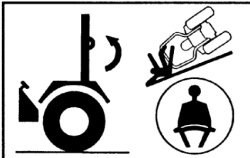
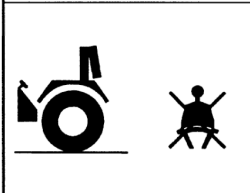
3TMACANCP001A

(1) Part No. 6C070-4742-2

⚠ CAUTION**TO AVOID PERSONAL INJURY:**

1. Read and understand the operator's manual before operation.
2. Before starting the engine, make sure that everyone is at a safe distance from the tractor and that the PTO is OFF.
3. Do not allow passengers on the tractor at any time.
4. Before allowing other people to use the tractor, have them read the operator's manual.
5. Check the tightness of all nuts and bolts regularly.
6. Keep all shields in place and stay away from all moving parts.
7. Lock the two brake pedals together before driving on the road.
8. Slow down for turns, or rough roads, or when applying individual brakes.
9. On public roads use SMV emblem and hazard lights, if required by local traffic and safety regulations.
10. Pull only from the drawbar.
11. Before dismounting, lower the implement to the ground, set the parking brake, stop the engine and remove the key.
12. Securely support tractor and implements before working underneath.

(2) Part No. 3A111-9848-2

	<p>⚠ WARNING</p> <p>TO AVOID INJURY OR DEATH FROM ROLL-OVER:</p> <ul style="list-style-type: none"> • Keep Roll-Over Protective Structures (ROPS) in the upright and locked position. • Fasten SEAT BELT before operating.
	<p>THERE IS NO OPERATOR PROTECTION WHEN THE ROPS IS IN THE FOLDED POSITION.</p> <ul style="list-style-type: none"> • Check the operating area and fold the ROPS only when absolutely necessary. • Do not wear SEAT BELT if ROPS is folded. • Raise and lock ROPS as soon as vertical clearance allows. • Read ROPS related instructions and warnings.

(4) Part No. TA040-4956-2

Diesel fuel
only

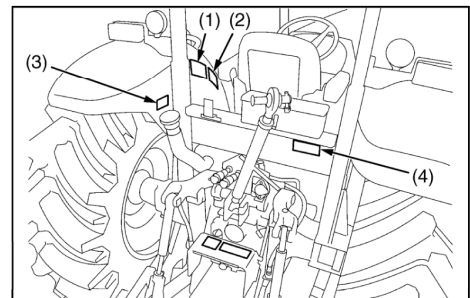
No fire



(3) Part No. 3P305-9856-1

<p>⚠ CAUTION</p>	
<p>TO AVOID INJURY FROM SEPARATION:</p>	
 <p>GROOVE LH</p>	<p>DO NOT EXTEND LIFT ROD BEYOND THE GROOVE ON THE THREADED ROD.</p>
 <p>GROOVE RH</p>	

1AGAICVAP046E



3TMACANCP002A



(1) Part No. 6C150-4743-1 [Hydraulic shuttle model]

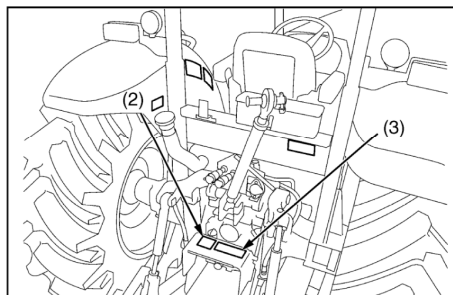
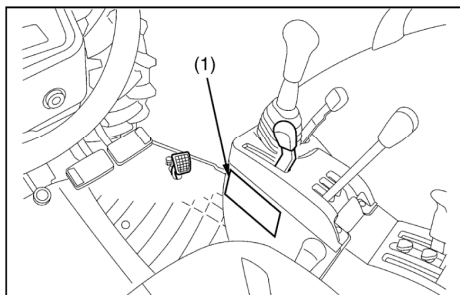
 WARNING	BEFORE DISMOUNTING TRACTOR: 1. ALWAYS SET PARKING BRAKE. Leaving transmission in gear with the engine stopped will not prevent tractor from rolling. 2. PARK ON LEVEL GROUND WHENEVER POSSIBLE. If parking on a slope, position tractor across the slope. 3. LOWER ALL IMPLEMENTS TO THE GROUND. 4. STOP THE ENGINE.
	

(2) Part No. TA040-4935-1

 WARNING
TO AVOID PERSONAL INJURY: 1. Attach pulled or towed loads to the drawbar only. 2. Use the 3-point hitch only with equipment designed for 3-point hitch usage.

(3) Part No. TA040-4959-3

	 WARNING TO AVOID PERSONAL INJURY. 1. Keep PTO shield in place at all times. 2. Do not operate the PTO at speeds faster than the speed recommended by the implement manufacturer. 3. For trailing PTO-driven implements, set drawbar at towing position. (see operator's manual)
---	---

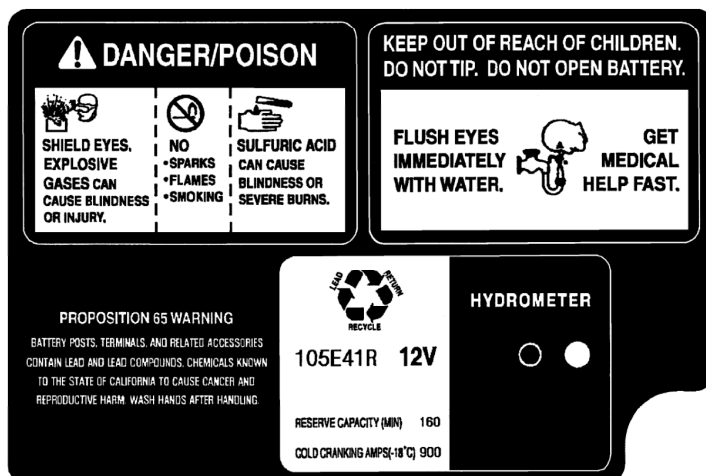


3TMACANCP003A

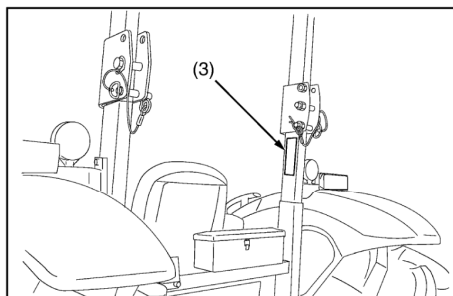
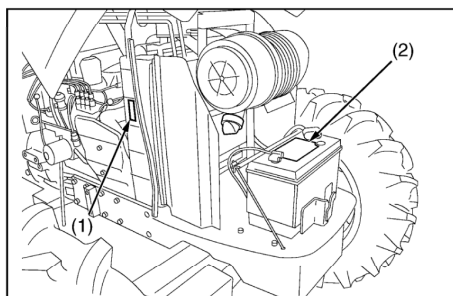
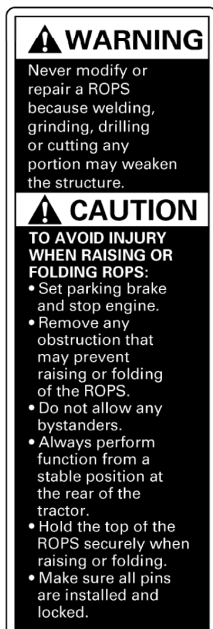
- (1) Part No. 6C090-4958-2
Stay clear of engine fan and fanbelt.



- (2) Part No. 3N300-9892-1



- (3) Part No. 3A111-9554-1



CARE OF DANGER, WARNING AND CAUTION LABELS

1. Keep danger, warning and caution labels clean and free from obstructing material.
2. Clean danger, warning and caution labels with soap and water, dry with a soft cloth.
3. Replace damaged or missing danger, warning and caution labels with new labels.
4. If a component with danger, warning or caution label (s) affixed is replaced with new part, make sure new label (s) is (are) attached in the same location (s) as the replaced component.
5. Mount new danger, warning and caution labels by applying on a clean dry surface and pressing any bubbles to outside edge.

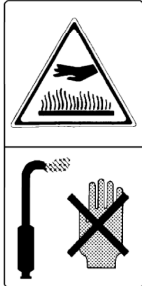
3TMACANCP004A

■ CABIN Model

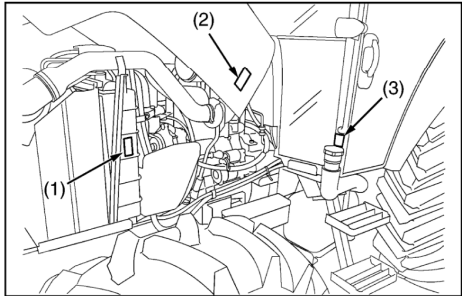
(1) Part No. 6C090-4958-2
Stay clear of engine
fan and fan belt.



(2) Part No. 3N300-4958-1
Do not touch hot surface
like muffler, etc.



(3) Part No. 6C040-4741-1
No fire



3TMACANCP005A

- (1) Part No. 6C090-4958-2
Stay clear of engine fan and fan belt.



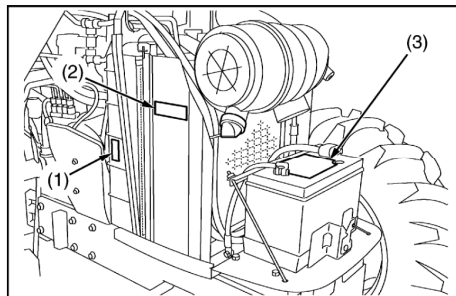
- (2) Part No. 3A851-7295-1

CAUTION REFRIGERANT UNDER HIGH PRESSURE Improper service methods may cause injury. Air conditioning system should be serviced by qualified personnel. See Repair Manual.		ATTENTION REFRIGERANT SOUS HAUTE PRESSION Un entretien incorrect peut provoquer des blessures. Le système de climatisation doit être entretenu par une personne qualifiée. Voir le manuel de réparation.	
HFC134a Refrigerant USE ONLY Max. 0.95kg (2.09lbs.) Min. 0.85kg (1.87lbs.)	ND-OIL OR EQUIVALENT	8 SAE J-639	HFC134a Refrigerant UNIQUEMENT Max. 0.95kg (2.09lbs.) Min. 0.85kg (1.87lbs.)
MFD. BY DENSO CORPORATION JAPAN.		FABRIQUE PAR DENSO CORPORATION JAPON.	

- (3) Part No. 3N300-9892-1

⚠ DANGER/POISON		KEEP OUT OF REACH OF CHILDREN. DO NOT TIP. DO NOT OPEN BATTERY.	
 SHIELD EYES. EXPLOSIVE GASES CAN CAUSE BLINDNESS OR INJURY.	 NO SPARKS FLAMES SMOKING	 SULFURIC ACID CAN CAUSE BLINDNESS OR SEVERE BURNS.	 FLUSH EYES IMMEDIATELY WITH WATER. GET MEDICAL HELP FAST.
PROPOSITION 65 WARNING BATTERY POSTS, TERMINALS, AND RELATED ACCESSORIES CONTAIN LEAD AND LEAD COMPOUNDS, CHEMICALS KNOWN TO THE STATE OF CALIFORNIA TO CAUSE CANCER AND REPRODUCTIVE HARM. WASH HANDS AFTER HANDLING.		 105E41R 12V RESERVE CAPACITY (MIN) 160 COLD CRANKING AMPS(-18°C) 900	
		HYDROMETER 	

1AGAICHAP100A



3TMACANCP006A

(1) Part No. 3F240-9857-1 [Hydraulic shuttle model]

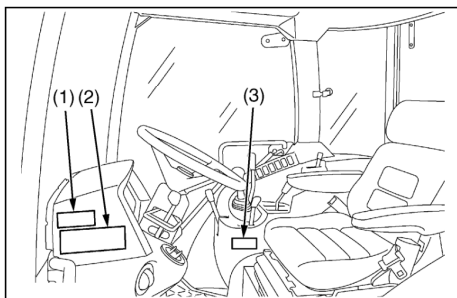
 WARNING
<p>To avoid free wheeling when shifting the shuttle lever while on a slope: Stop completely by using the brake and by depressing the clutch pedal. Start off after selecting shuttle direction by releasing the clutch pedal.</p>

(2) Part No. TA040-4965-2

 DANGER
<p>TO AVOID POSSIBLE INJURY OR DEATH FROM A MACHINE RUNAWAY.</p> <ol style="list-style-type: none"> 1. Do not start engine by shorting across starter terminals or bypassing the safety start switch. Machine may start in gear and move if normal starting circuitry is bypassed. 2. Start engine only from operator's seat with transmission and PTO OFF. Never start engine while standing on the ground.

(3) Part No. 6C150-4743-1 [Hydraulic shuttle model]

 WARNING	<p>BEFORE DISMOUNTING TRACTOR:</p> <ol style="list-style-type: none"> 1. ALWAYS SET PARKING BRAKE. Leaving transmission in gear with the engine stopped will not prevent tractor from rolling. 2. PARK ON LEVEL GROUND WHENEVER POSSIBLE. If parking on a slope, position tractor across the slope. 3. LOWER ALL IMPLEMENTS TO THE GROUND. 4. STOP THE ENGINE.
	



(1) Part No. 3F240-9836-2

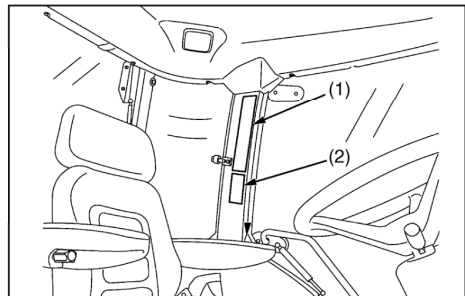
CAUTION**TO AVOID PERSONAL INJURY:**

1. Read and understand the operator's manual before operation.
2. Before starting the engine, make sure that everyone is at a safe distance from tractor and the PTO is off.
3. Do not allow passengers on the tractor at any time.
4. Before allowing other people to use the tractor, have them read the operator's manual.
5. Check the tightness of nuts and bolts regularly.
6. Keep all shields in place and stay away from all moving parts.
7. Lock the two brake pedals together before driving on the road.
8. Slow down for turns, or rough roads, or when applying individual brakes.
9. On public roads use SMV emblem and hazard lights, if required by local traffic and safety regulations.
10. Pull only from the drawbar.
11. Before dismounting, lower the implement to the ground, set the parking brake, stop the engine and remove the key.
12. Securely support tractor and implements before working underneath.

(2) Part No. TA040-4902-1

WARNING

TO AVOID INJURY OR DEATH FROM ROLL-OVER:
Always use seat belt when driving.



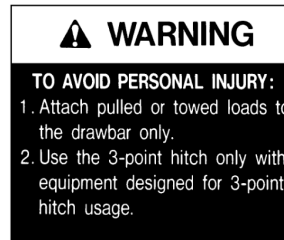
3TMACANCP008A

(1) Part No. 3P305-9856-1

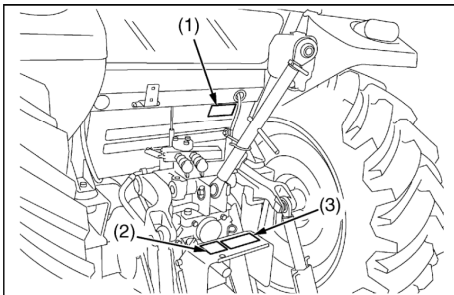
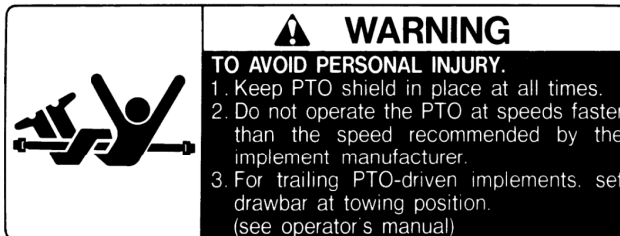


1AGAICVAP046E

(2) Part No. TA040-4935-1



(3) Part No. TA040-4959-3

**CARE OF DANGER, WARNING AND CAUTION LABELS**

1. Keep danger, warning and caution labels clean and free from obstructing material.
2. Clean danger, warning and caution labels with soap and water, dry with a soft cloth.
3. Replace damaged or missing danger, warning and caution labels with new labels.
4. If a component with danger, warning or caution label (s) affixed is replaced with new part, make sure new label (s) is (are) attached in the same location (s) as the replaced component.
5. Mount new danger, warning and caution labels by applying on a clean dry surface and pressing any bubbles to outside edge.

3TMACANCP009A

SPECIFICATIONS

Model			M8540	M9540
			4WD	4WD
Engine	Model		V3800DI-T-E2	
	Type		Vertical, water-cooled, 4-cycle direct injection diesel engine	
	Number of cylinders		4	
	Total displacement		3769 cm ³ (230.0 cu.in.)	
	Bore and stroke		100 × 120 mm (3.9 × 4.7 in.)	
	Rated speed		2600 min ⁻¹ (rpm)	
	Net power*1	ROPS Model	63.1 kW (84.6 HP)	70.5 kW (94.5 HP)
		CABIN Model	62.6 kW (84.0 HP)	70.8 kW (95.0 HP)
	PTO power*1		56.0 kW (75 HP)	62.7 kW (84 HP)
	Maximum torque		283 N·m (28.9 kgf·m, 208.7 ft-lbs) / 1400 to 1600 min ⁻¹ (rpm)	316 N·m (32.2 kgf·m, 233.1 ft-lbs) / 1400 to 1600 min ⁻¹ (rpm)
	Battery capacity		12 V, RC : 160 min, CCA : 900 A	
	Fuel		Diesel fuel No. 1 [below -10 °C (14 °F)], Diesel fuel No. 2-D [above -10 °C (14 °F)]	
	Fuel tank capacity	ROPS Model	90 L (23.8 U.S.gals., 19.8 Imp.gals.)	
		CABIN Model	110 L (29.1 U.S.gals., 24.2 Imp.gals.)	
Dimensions	Engine oil capacity		10.7 L (11.3 U.S.qts., 9.4 Imp.qts.)	
	Coolant capacity		9.0 L (9.5 U.S.qts., 7.9 Imp.qts.)	
	Overall length		3760 mm (148 in.)	
	Overall width (min. tread)		1990 mm (78.0 in.)	2010 mm (79.0 in.)
	Overall height	ROPS Model	2535 mm (99.8 in.)	
		CABIN Model	2570 mm (101.0 in.)	
	Wheel base		2250 mm (88.6 in.)	
	Tread	Front	1520, 1620 mm (59.8, 63.8 in.)	
		Rear	1520 to 1920 mm (59.8 to 75.6 in.)	
	Minimum ground clearance		450 mm (17.7 in.) (Drawbar bracket)	
Weight	ROPS		2450 kg (5401 lbs)	2500 kg (5512 lbs)
	CABIN		2740 kg (6040 lbs)	2800 kg (6175 lbs)
Traveling system	Standard tire size	Front	12.4-24	
		Rear	18.4-30	
	Clutch		Multiple wet discs	
	Shuttle		Hydraulic	
	Number of speed		F18/R18 (with creep)	
	Transmission		F12/R12 fully synchronized	
	Steering		Hydraulic power steering	
	Braking system	Traveling	Hydraulic wet discs	
		Parking	Mechanical gear lock	
	Differential	Front	LSD (Limited Slip Differential)	
		Rear	Bevel gears with differential lock	

Note : *1 : Manufacture's estimate

*2 : At lower link end with links horizontal.

The company reserves the right to change the specifications without notice.

W10281170

Model			M8540		M9540	
			4WD		4WD	
Hydraulic system	Hydraulic control system		Position, draft (top link sensing) and mix control			
	Pump capacity		64.3 L (17 U.S.gals., 14 Imp.gals.) / min.			
	3-point hitch		SAE Category II			
	Max. lifting force	At lift points ^{*2}	3900 kg (8600 lbs)			
		24 in. behind lift points ^{*2}	3300 kg (7275 lbs)			
	Remote hydraulic control		Two remote valves (3rd valve option)			
	System pressure		19.6 MPa (200 kgf/cm ² , 2844.7 psi)			
Traction system			Swinging drawbar, adjustable in direction			
PTO	Live PTO (Independent)	Direction of turning	Clockwise, viewed from tractor rear			
		PTO speed	540 min ⁻¹ (rpm) / 2035 min ⁻¹ (rpm) engine speed 540E min ⁻¹ (rpm) / 1519 min ⁻¹ (rpm) engine speed			

Note : *1 : Manufacture’s estimate
*2 : At lower link end with links horizontal.
The company reserves the right to change the specifications without notice.

W10309210

TRAVELING SPEEDS

(At rated engine rpm)

Model			M8540 / M9540
			F12/R12 speed transmission model
Tire size (Rear)			18.4-30
Shuttle shift lever	Range gear shift lever	Main gear shift lever	km/h (mph)
Forward	CREEP	1	0.42 (0.26)
		2	0.54 (0.34)
		3	0.71 (0.44)
		4	0.91 (0.56)
		5	1.12 (0.70)
		6	1.35 (0.84)
	L	1	2.6 (1.6)
		2	3.4 (2.1)
		3	4.5 (2.8)
		4	5.7 (3.6)
		5	7.1 (4.4)
		6	8.5 (5.3)
	H	1	10.4 (6.5)
		2	13.4 (8.4)
		3	17.7 (11.0)
		4	22.6 (14.1)
		5	28.0 (17.5)
		6	33.7 (21.1)

The company reserves the right to change the specifications without notice.

W1035065

(At rated engine rpm)

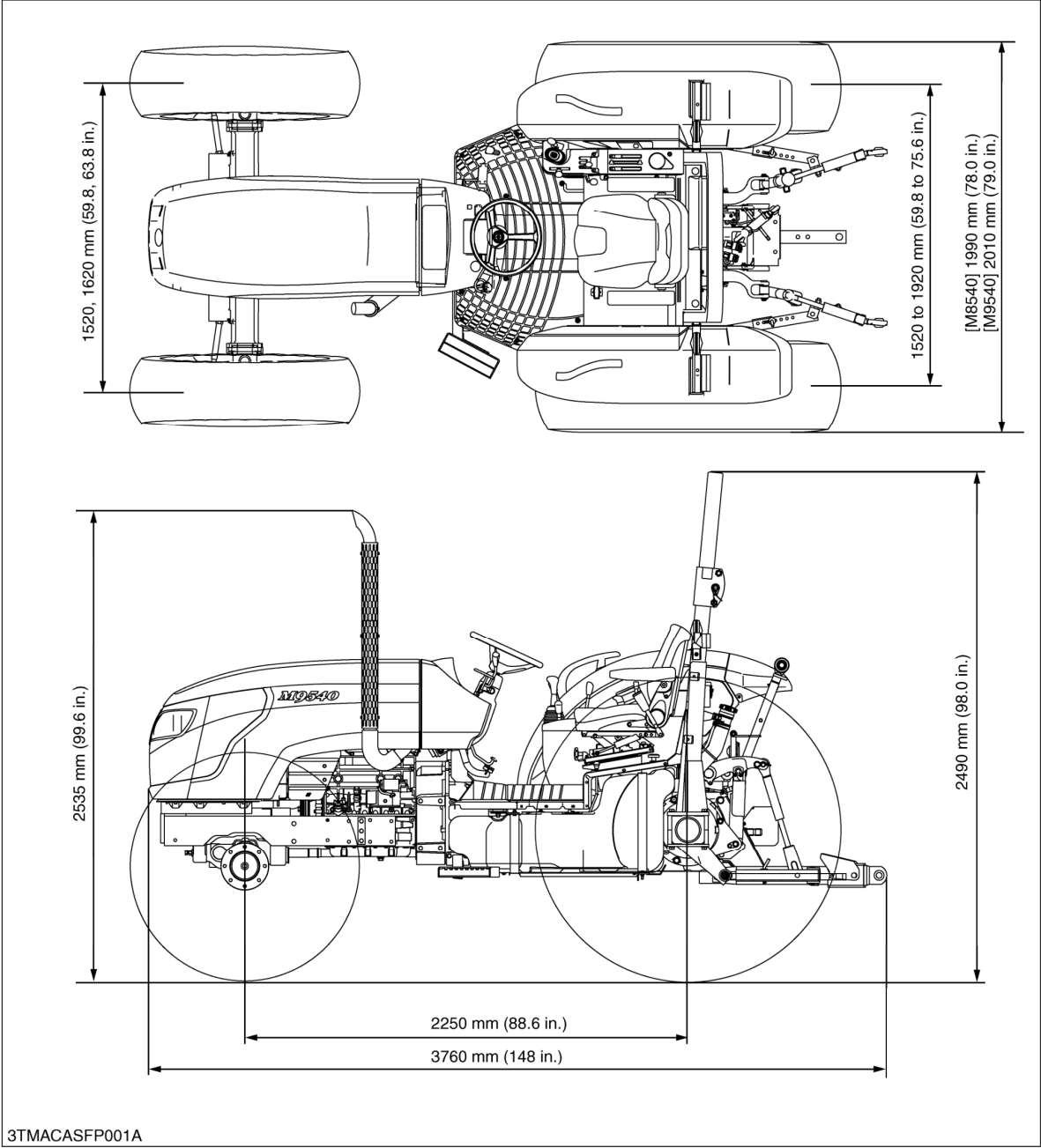
Model			M8540 / M9540
			F12/R12 speed transmission model
Tire size (Rear)			18.4-30
Shuttle shift lever	Range gear shift lever	Main gear shift lever	km/h (mph)
Reverse	CREEP	1	0.42 (0.26)
		2	0.53 (0.33)
		3	0.70 (0.44)
		4	0.90 (0.56)
		5	1.11 (0.70)
		6	1.34 (0.84)
	L	1	2.6 (1.6)
		2	3.4 (2.1)
		3	4.4 (2.8)
		4	5.7 (3.5)
		5	7.0 (4.4)
		6	8.5 (5.3)
	H	1	10.4 (6.4)
		2	13.3 (8.3)
		3	17.5 (10.9)
		4	22.5 (14.0)
		5	27.8 (17.4)
		6	33.4 (20.9)

The company reserves the right to change the specifications without notice.

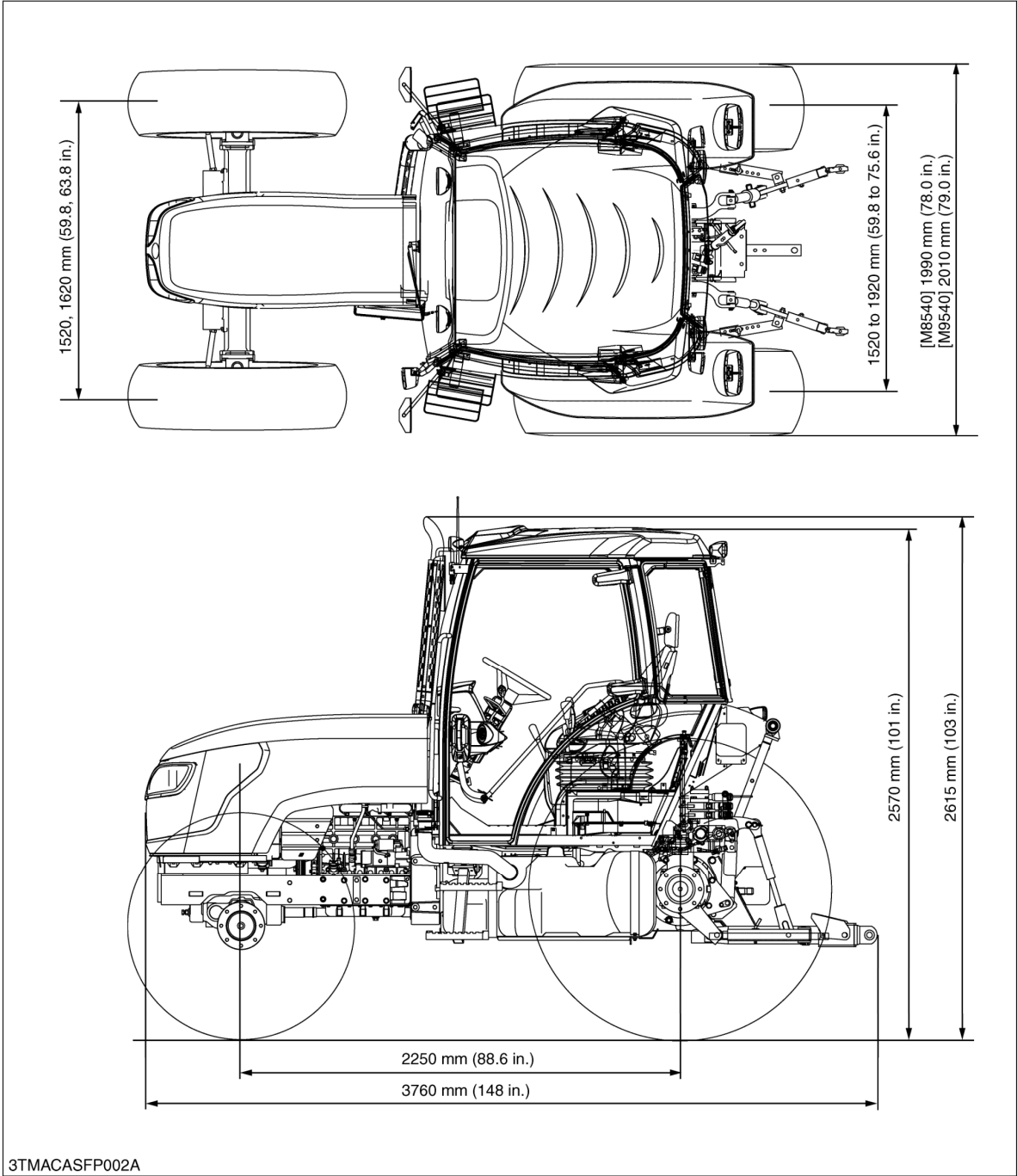
W1034678

DIMENSIONS

ROPS Model



CABIN Model



G GENERAL

GENERAL

CONTENTS

1. TRACTOR IDENTIFICATION	G-1
[1] MODEL NAME AND SERIAL NUMBERS.....	G-1
[2] CYLINDER NUMBER	G-3
2. GENERAL PRECAUTIONS.....	G-4
3. HANDLING PRECAUTIONS FOR ELECTRICAL PARTS AND WIRING ..	G-5
[1] WIRING.....	G-5
[2] BATTERY.....	G-7
[3] FUSE.....	G-7
[4] CONNECTOR.....	G-7
[5] HANDLING OF CIRCUIT TESTER.....	G-8
4. LUBRICANTS, FUEL AND COOLANT	G-9
5. TIGHTENING TORQUES	G-11
[1] GENERAL USE SCREWS, BOLTS AND NUTS.....	G-11
[2] STUD BOLTS.....	G-11
[3] HYDRAULIC FITTINGS.....	G-12
6. MAINTENANCE	G-13
7. CHECK AND MAINTENANCE.....	G-16
[1] DAILY CHECK	G-16
[2] CHECK POINTS OF INITIAL 50 HOURS.....	G-17
[3] CHECK POINTS OF EVERY 50 HOURS.....	G-20
[4] CHECK POINTS OF EVERY 100 HOURS.....	G-22
[5] CHECK POINTS OF EVERY 200 HOURS.....	G-27
[6] CHECK POINTS OF EVERY 400 HOURS.....	G-29
[7] CHECK POINTS OF EVERY 500 HOURS.....	G-30
[8] CHECK POINTS OF EVERY 600 HOURS.....	G-32
[9] CHECK POINT OF EVERY 1000 HOURS	G-32
[10]CHECK POINT OF EVERY 1500 HOURS	G-32
[11]CHECK POINTS OF EVERY 3000 HOURS.....	G-33
[12]CHECK POINTS OF EVERY 1 YEAR.....	G-33
[13]CHECK POINTS OF EVERY 2 YEARS.....	G-34
[14]CHECK POINTS OF EVERY 4 YEARS.....	G-37
[15]OTHERS	G-38
8. SPECIAL TOOLS.....	G-43
[1] SPECIAL TOOLS FOR ENGINE	G-43
[2] SPECIAL TOOLS FOR TRACTOR.....	G-58
[3] SPECIAL TOOLS FOR AIR CONDITIONER UNIT.....	G-71
9. TIRES.....	G-73
[1] TYPE OF TIRES	G-73
[2] TREAD ADJUSTMENT.....	G-74
(1) Front Wheels [4WD Model].....	G-74
(2) Rear Wheels	G-75
[3] WHEEL HUB.....	G-76
[4] TIRE PRESSURE	G-76
[5] TIRE LIQUID INJECTION.....	G-77
10. IMPLEMENT LIMITATIONS.....	G-80

1. TRACTOR IDENTIFICATION

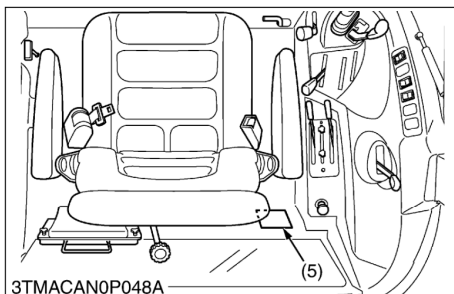
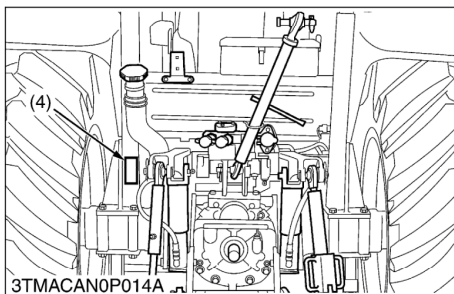
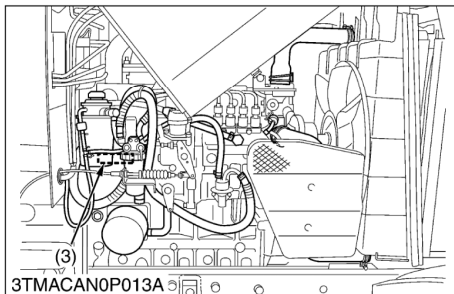
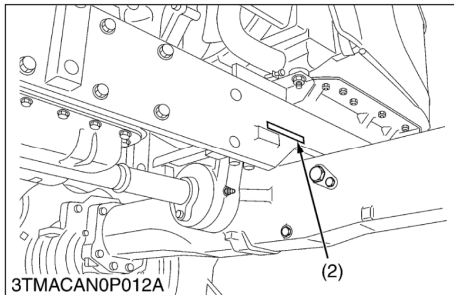
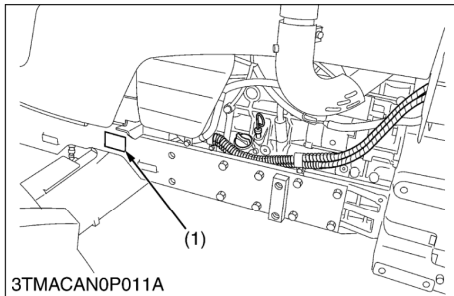
[1] MODEL NAME AND SERIAL NUMBERS

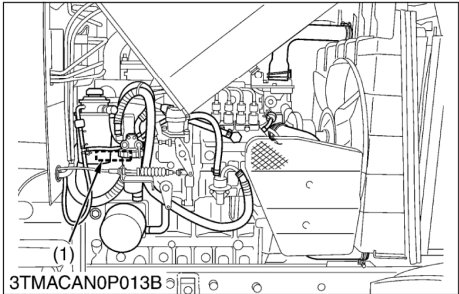
When contacting your local KUBOTA distributor, always specify engine serial number, tractor serial number and hourmeter reading.

- (1) Tractor Identification Plate
- (2) Tractor Serial Number
- (3) Engine Serial Number

- (4) ROPS Identification Plate
(ROPS Serial Number)
- (5) CABIN Identification Plate
(CABIN Serial Number)

W1010800





Engine Serial Number

The engine serial number is an identified number for the engine. It is marked after the engine model number. It indicates month and year of manufacture as follows.

• **Year of manufacture**

Alphabet or Number	Year	Alphabet or Number	Year
1	2001	F	2015
2	2002	G	2016
3	2003	H	2017
4	2004	J	2018
5	2005	K	2019
6	2006	L	2020
7	2007	M	2021
8	2008	N	2022
9	2009	P	2023
A	2010	R	2024
B	2011	S	2025
C	2012	T	2026
D	2013	V	2027
E	2014		

• **Month of manufacture**

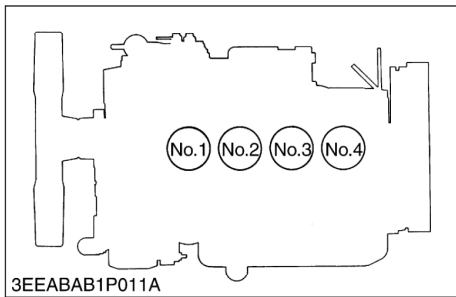
Month	Engine Serial Number	
	0001 ~ 9999	10000 ~
January	A0001 ~ A9999	B0001 ~
February	C0001 ~ C9999	D0001 ~
March	E0001 ~ E9999	F0001 ~
April	G0001 ~ G9999	H0001 ~
May	J0001 ~ J9999	K0001 ~
June	L0001 ~ L9999	M0001 ~
July	N0001 ~ N9999	P0001 ~
August	Q0001 ~ Q9999	R0001 ~
September	S0001 ~ S9999	T0001 ~
October	U0001 ~ U9999	V0001 ~
November	W0001 ~ W9999	X0001 ~
December	Y0001 ~ Y9999	Z0001 ~

e.g. V3800-6A0001
“6” indicates 2006 and “A” indicates January.
So, 6A indicates that the engine was manufactured on January, 2006.

(1) Engine Model and Serial Number

W1010477

[2] CYLINDER NUMBER

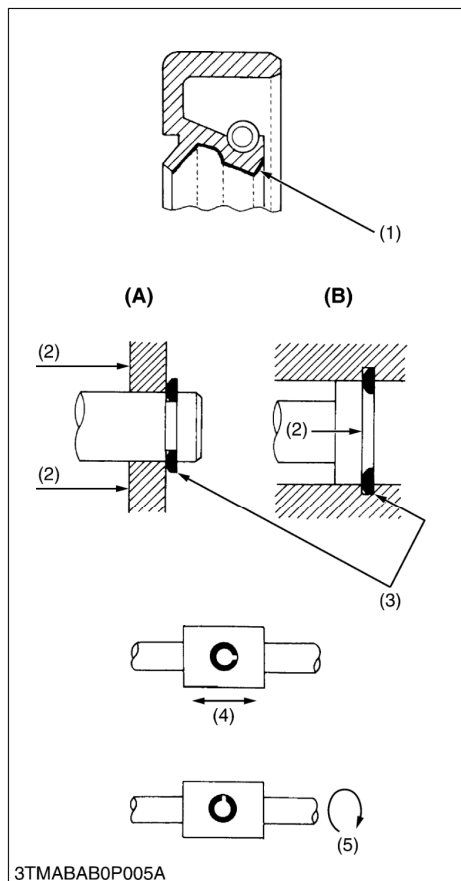


The cylinder numbers of V3800-TE2 diesel engine is designated as shown in the figure.

The sequence of cylinder numbers is given as No.1, No.2, No.3 and No.4 starting from the gear case side.

W1011077

2. GENERAL PRECAUTIONS



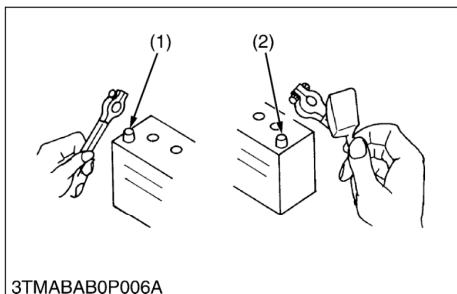
- During disassembly, carefully arrange removed parts in a clean area to prevent confusion later. Screws, bolts and nuts should be installed in their original position to prevent reassembly errors.
- When special tools are required, use KUBOTA genuine special tools. Special tools which are not frequently used should be made according to the drawings provided.
- Before disassembling or servicing electrical wires, always disconnect the ground cable from the battery first.
- Remove oil and dirt from parts before measuring.
- Use only KUBOTA genuine parts for parts replacement to maintain machine performance and to assure safety.
- Gaskets and O-rings must be replaced during reassembly. Apply grease to new O-rings or oil seals before assembling. See the figure left side.
- When reassembling external snap rings or internal snap rings, they must be positioned so that sharp edge faces against the direction from which a force is applied. See the figure left side.
- When inserting spring pins, their splits must face the direction from which a force is applied. See the figure left side.
- To prevent damage to the hydraulic system, use only specified fluid or equivalent.

- (1) Grease
- (2) Force
- (3) Sharp Edge
- (4) Axial Force
- (5) Rotating Movement

- (A) External Snap Ring
- (B) Internal Snap Ring

W1010904

3. HANDLING PRECAUTIONS FOR ELECTRICAL PARTS AND WIRING



To ensure safety and prevent damage to the machine and surrounding equipment, heed the following precautions in handling electrical parts and wiring.

■ IMPORTANT

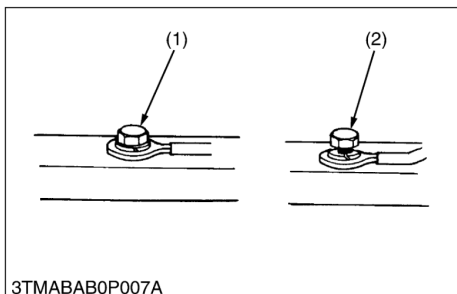
- Check electrical wiring for damage and loosened connection every year. To this end, educate the customer to do his or her own check and at the same time recommend the dealer to perform periodic check for a fee.
- Do not attempt to modify or remodel any electrical parts and wiring.
- When removing the battery cables, disconnect the negative cable first. When installing the battery cables, connect the positive cable first.

(1) Negative Terminal

(2) Positive Terminal

W1011114

[1] WIRING

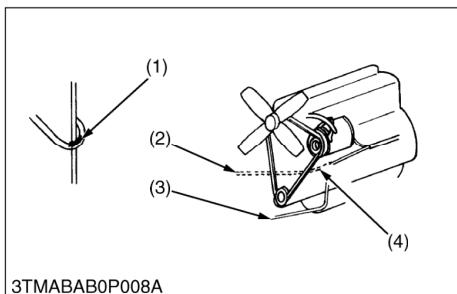


- Securely tighten wiring terminals.

(1) Correct
(Securely Tighten)

(2) Incorrect
(Loosening Leads to Faulty Contact)

W1011216

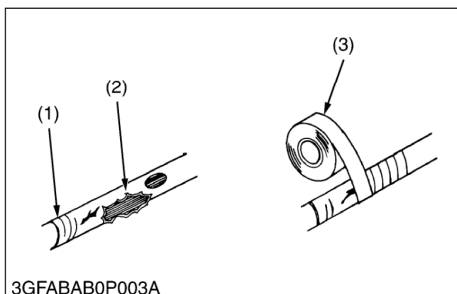


- Do not let wiring contact dangerous part.

(1) Dangerous Part
(2) Wiring (Incorrect)

(3) Wiring (Correct)
(4) Dangerous Part

W1011313

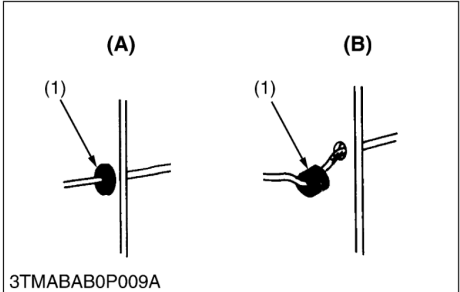


- Repair or change torn or aged wiring immediately.

(1) Aged
(2) Torn

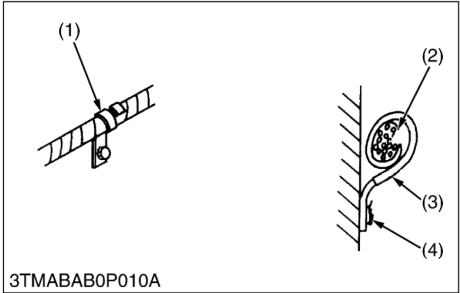
(3) Insulating Vinyl Tape

W1012292



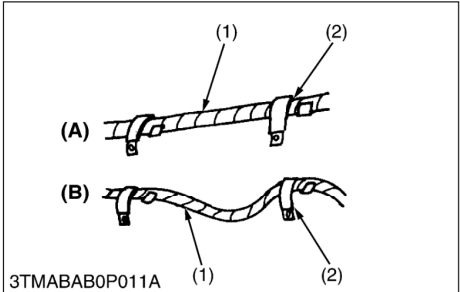
- Securely insert grommet.
- (1) Grommet
- (A) Correct
(B) Incorrect

W1011388



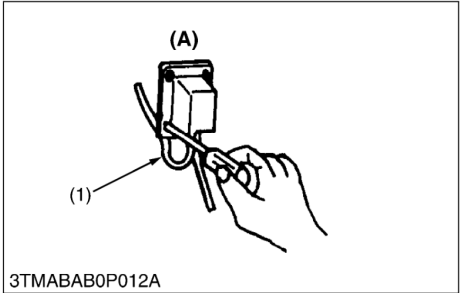
- Securely clamp, being careful not to damage wiring.
- (1) Clamp
- Wind Clamp Spirally
- (2) Wire Harness
- (3) Clamp
(4) Welding Dent

W1011458



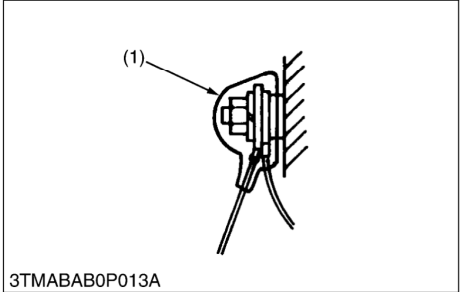
- Clamp wiring so that there is no twist, unnecessary sag, or excessive tension, except for movable part, where sag be required.
- (1) Wiring
- (2) Clamp
- (A) Correct
(B) Incorrect

W1011587



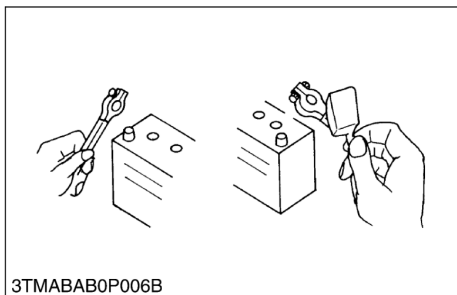
- In installing a part, take care not to get wiring caught by it.
- (1) Wiring
- (A) Incorrect

W1011670



- After installing wiring, check protection of terminals and clamped condition of wiring, only connect battery.
- (1) Cover
- Securely Install Cover

W1011735

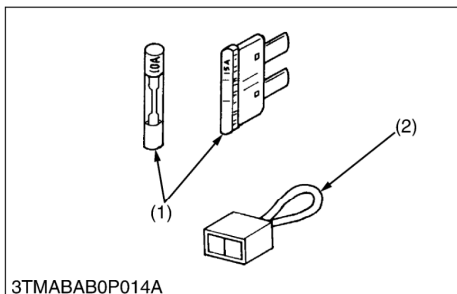
[2] BATTERY

- Take care not to confuse positive and negative terminals.
- When removing battery cable, disconnect negative wire first. When installing battery cable, check for polarity and connect positive wire first.
- Do not install any battery with capacity other than is specified (Ah).
- After connecting cable to battery terminals, apply grease to them and securely install terminal covers on them.
- Do not allow dirt and dust to collect on battery.

! CAUTION

- Take care not to let battery liquid spill on your skin and clothes. If contaminated, wash it off with water immediately.
- Before recharging the battery, remove it from the machine.
- Before recharging, remove cell caps.
- Do recharging in a well-ventilated place where there is no open flame nearby, as hydrogen gas and oxygen are formed.

W1011816

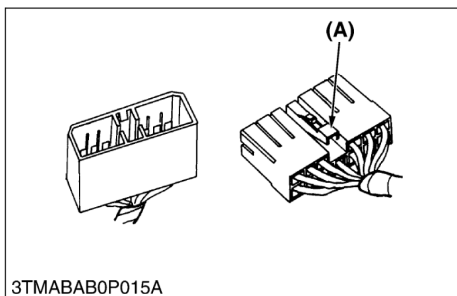
[3] FUSE

- Use fuses with specified capacity. Neither too large or small capacity fuse is acceptable.
- Never use steel or copper wire in place of fuse.
- Do not install working light, radio set, etc. on machine which is not provided with reserve power supply.
- Do not install accessories if fuse capacity of reserve power supply is exceeded.

(1) Fuse

(2) Slow Blow Fuse

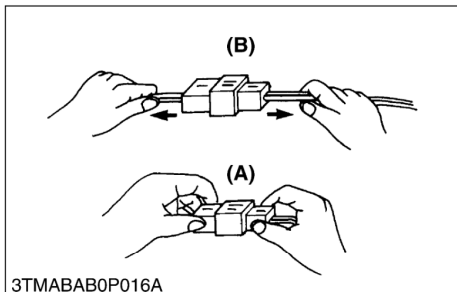
W1012092

[4] CONNECTOR

- For connector with lock, push lock to separate.

(A) Push

W1012211



- In separating connectors, do not pull wire harnesses.
- Hold connector bodies to separate.

(A) Correct

(B) Incorrect

W1012272